

NO. OF COPIES RECEIVED 5
DISTRIBUTION
SANTA FE
FILE
U.S.G.S.
LAND OFFICE
OPERATOR

NEW MEXICO OIL CONSERVATION COMMISSION
RECEIVED

JUN 27 1973

Form C-101
Revised 1-1-65

5A. Indicate Type of Lease
STATE
FEE

5. State Oil & Gas Lease No.

APPLICATION FOR PERMIT TO DRILL, DEEPEN OR PLUG BACK

1a. Type of Work
b. Type of Well
DRILL
DEEPEN
PLUG BACK
OIL WELL
GAS WELL
OTHER
SINGLE ZONE
MULTIPLE ZONE

7. Unit Agreement Name

8. Farm or Lease Name
SEA

9. Well No.
1

2. Name of Operator
Mountain States Petroleum Corp

10. Field and Pool, or Wildcat
Wildcat

3. Address of Operator
P.O. Box 1936 Roswell, NM 88201

4. Location of Well
UNIT LETTER K LOCATED 1980 FEET FROM THE south LINE
AND 2180 FEET FROM THE West LINE OF SEC. 18 TWP. 4S RGE. 27E NMPM

12. County
Chaves

19. Proposed Depth
OPB 6310
19A. Formation
Pennsylvanian
20. Rotary or C.T.
Rotary

21. Elevations (Show whether DF, RT, etc.)
3867 G1
21A. Kind & Status Plug. Bond
Statewide
21B. Drilling Contractor
Company Tools
22. Approx. Date Work will start
July 1, 1973

PROPOSED CASING AND CEMENT PROGRAM

Table with 6 columns: SIZE OF HOLE, SIZE OF CASING, WEIGHT PER FOOT, SETTING DEPTH, SACKS OF CEMENT, EST. TOP. Rows include old 13-3/8", old 9-5/8", and old 7" casing details.

Old well P&A 1950. Propose to drill out plugs, re-enter pulled 7" casing at 3500', clean out to PB TD 6310 and test Pennsylvanian OH 6127-6310. If productive potential then tie back to old 7" casing with 7" casing and casing bowl. Pressure test. Then complete open hole through 2-7/8" tubing with packer set in casing about 5900'. Hole conditions may require running 4-1/2" J-55 9.5 and 10.5# casing to about 6075, cementing with 125 sacks Class C w/2% CaCl, inside old 7" casing. Production would then be thru 2-3/8" tubing set on packer about 5900, from open hole interval 6127-6310.

Formerly Olson Drilling Co.,
Coble Trust #1 LTD 8630

APPROVAL VALID
FOR 90 DAYS UNLESS
DRILLING COMMENCED,
EXPIRES 9-29-73

IN ABOVE SPACE DESCRIBE PROPOSED PROGRAM: IF PROPOSAL IS TO DEEPEN OR PLUG BACK, GIVE DATA ON PRESENT PRODUCTIVE ZONE AND PROPOSED NEW PRODUCTIVE ZONE, GIVE BLOWOUT PREVENTER PROGRAM, IF ANY.

I hereby certify that the information above is true and complete to the best of my knowledge and belief.

Signed K. H. Haverford Title Geologist Date June 26, 1973

APPROVED BY W. A. Gussett TITLE OIL AND GAS INSPECTOR DATE JUN 29 1973

CONDITIONS OF APPROVAL, IF ANY:
If well is productive a well location survey will be required
and the NSC approved

NEW MEXICO OIL CONSERVATION COMMISSION  
WELL LOCATION AND ACREAGE DEDICATION PLAT

Form C-102  
Supersedes C-128  
Effective 1-1-65

All distances must be from the outer boundaries of the Section.

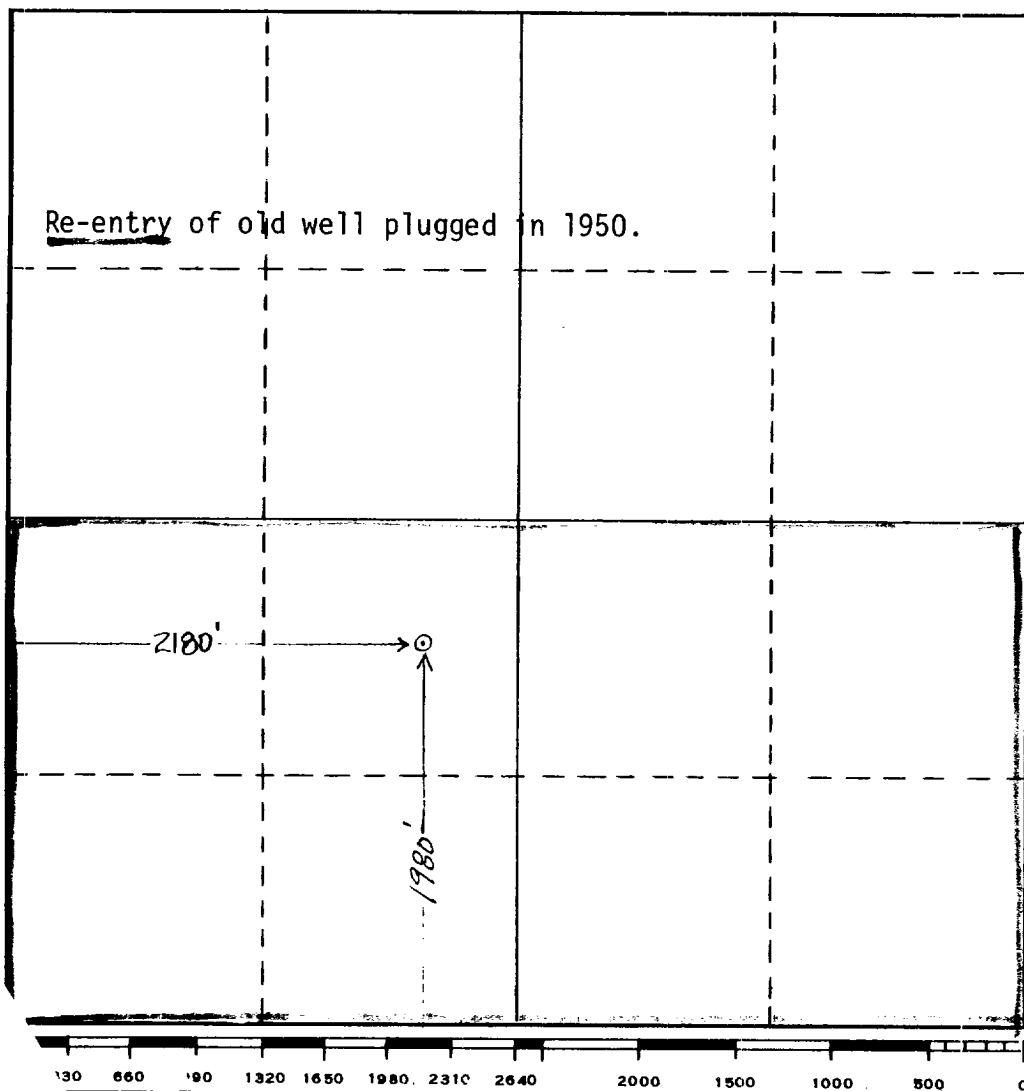
Operator Mountain States Petroleum Corp			Lease SEA		Well No. 1
Unit Letter K	Section 18	Township 4 South	Range 27 East	County Chaves	
Actual Footage Location of Well: 1980 feet from the South line and 2180 feet from the West line					
Ground Level Elev: 3867	Producing Formation Pennsylvanian	Pool Wildecat	Dedicated Acreage: 324.54 Acres		

1. Outline the acreage dedicated to the subject well by colored pencil or hachure marks on the plat below.
2. If more than one lease is dedicated to the well, outline each and identify the ownership thereof (both as to working interest and royalty).
3. If more than one lease of different ownership is dedicated to the well, have the interests of all owners been consolidated by communitization, unitization, force-pooling, etc?

☒ Yes ☐ No If answer is "yes," type of consolidation Will be communitized if productive.

If answer is "no," list the owners and tract descriptions which have actually been consolidated. (Use reverse side of this form if necessary.)

No allowable will be assigned to the well until all interests have been consolidated (by communitization, unitization, forced-pooling, or otherwise) or until a non-standard unit, eliminating such interests, has been approved by the Commission.



CERTIFICATION

I hereby certify that the information contained herein is true and complete to the best of my knowledge and belief.

Name K. C. Haver  
Position Geologist  
Company Mt States Petroleum Corp.  
Date June 26, 1973

I hereby certify that the well location shown on this plat was plotted from field notes of actual surveys made by me or under my supervision, and that the same is true and correct to the best of my knowledge and belief.

Date Surveyed  
Registered Professional Engineer and/or Land Surveyor

Certificate No.