

NEW MEXICO OIL CONSERVATION COMMISSION
Santa Fe, New Mexico

RECEIVED

NOV 17 1959

NOTICE OF INTENTION TO DRILL OR RECOMPLETE

Notice must be given to the District Office of the Oil Conservation Commission and approval obtained before drilling or recompletion begins. If changes in the proposed plan are considered advisable, a copy of this notice showing such changes will be returned to the sender. Submit this notice in QUINTUPPLICATE. One copy will be returned following approval. See additional instructions in Rules and Regulations of the Commission. If State Land submit 6 Copies

Roswell, New Mexico
(Place)November 16, 1959
(Date)OIL CONSERVATION COMMISSION
SANTA FE, NEW MEXICO

Gentlemen:

You are hereby notified that it is our intention to commence the (Drilling) (Recompletion) of a well to be known as

M. R. Voltz

(Company or Operator)

Lou T. White et al
(Lease)

Well No. 1, in H The well is

located 1980 feet from the North line and 660 feet from the

East line of Section 34, T. 10 S., R. 27 E., NMPM.

(GIVE LOCATION FROM SECTION LINE)

Wildcat

Pool, Chaves County

If State Land the Oil and Gas Lease is No.

If patented land the owner is Lou T. White

Address Roswell, New Mexico

We propose to drill well with drilling equipment as follows: Rotary

The status of plugging bond is in force

Drilling Contractor Allen Drilling Co.

We intend to complete this well in the Queen Sand formation at an approximate depth of 1100 feet.

CASING PROGRAM

We propose to use the following strings of Casing and to cement them as indicated:

Size of Hole	Size of Casing	Weight per Foot	New or Second Hand	Depth	Sacks Cement
6-3/4	4-1/2	9.50	New	1100	250
					Gravel
					Cement

If changes in the above plans become advisable we will notify you immediately.

ADDITIONAL INFORMATION (If recompletion give full details of proposed plan of work.)

Approved NOV 17 1959, 19
Except as follows:

OIL CONSERVATION COMMISSION

By W. A. Gressett

Sincerely yours,

M. R. Voltz (Company or Operator)

By M. R. Voltz

Position Operator
Send Communications regarding well to

Name M. R. Voltz

Address 1002

NEW MEXICO OIL CONSERVATION COMMISSION
WELL LOCATION AND ACREAGE DEDICATION PLAT

NOV 17 1959
 FORM C-128
 Revised 5/1/57

D. C. C.
 ARTESIA OFFICE

SEE INSTRUCTIONS FOR COMPLETING THIS FORM ON THE REVERSE SIDE

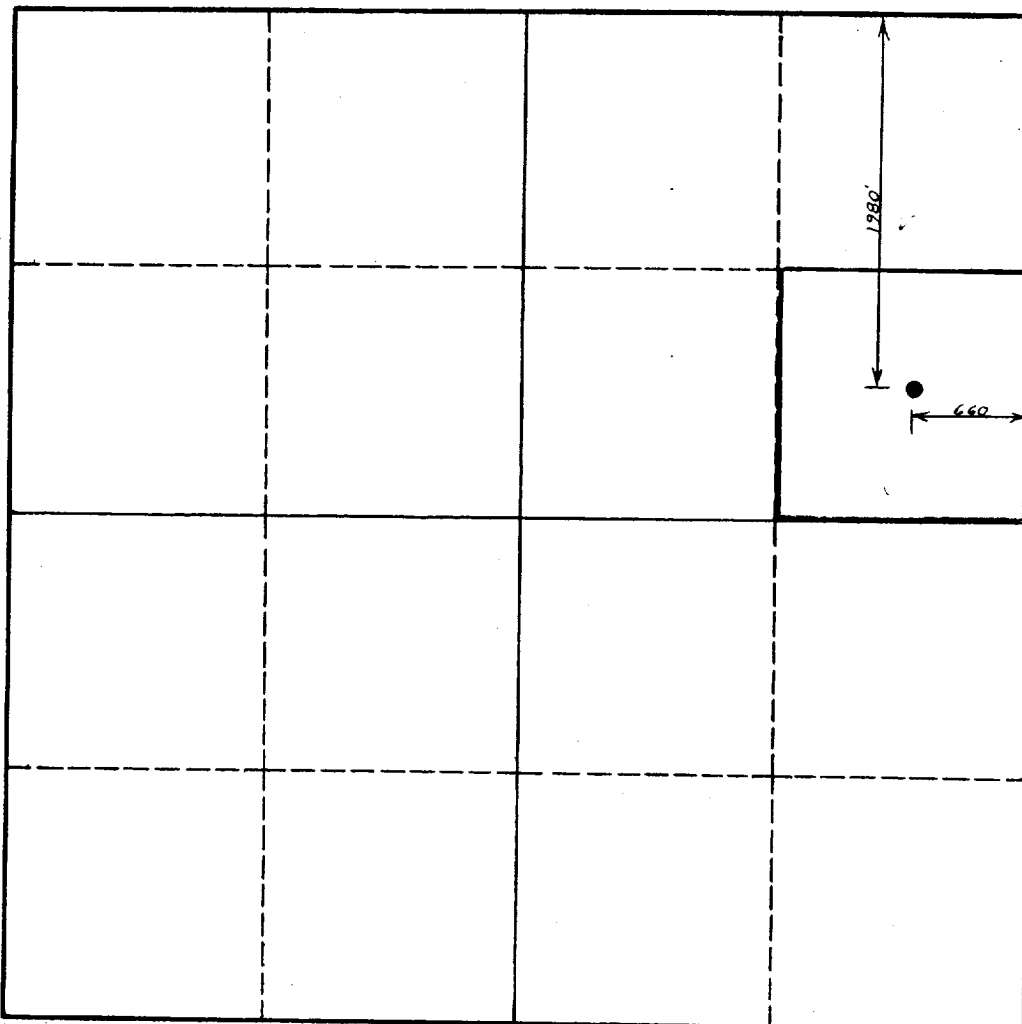
SECTION A

Operator M. R. VOLTZ		Lease Lou T. White et al		Well No. 1
Unit Letter H	Section 34	Township 10 South	Range 27 East	County Chaves
Actual Footage Location of Well: 1980 feet from the North line and 660 feet from the East line Sec. 34				
Ground Level Elev. 3772'	Producing Formation Queen	Pool Wildcat	Dedicated Acreage: 40 Acres	

1. Is the Operator the only owner in the dedicated acreage outlined on the plat below? YES **X** NO ____ . ("Owner" means the person who has the right to drill into and to produce from any pool and to appropriate the production either for himself or for himself and another. (65-3-29 (e) NMSA 1935 Comp.)
2. If the answer to question one is "no," have the interests of all the owners been consolidated by communitization agreement or otherwise? YES ____ NO ____ . If answer is "yes," Type of Consolidation ____
3. If the answer to question two is "no," list all the owners and their respective interests below:

Owner	Land Description

SECTION B



CERTIFICATION

I hereby certify that the information in SECTION A above is true and complete to the best of my knowledge and belief.

Name <i>M. R. Volts</i>
Position Operator
Company M. R. Volts
Date November 17, 1959

I hereby certify that the well location shown on the plat in SECTION B was plotted from field notes of actual surveys made by me or under my supervision, and that the same is true and correct to the best of my knowledge and belief.

Date Surveyed November 17, 1959
Registered Professional Engineer and/or Land Surveyor <i>[Signature]</i>
Certificate No. 2787

0 330 660 990 1320 1650 1980 2310 2640 2000 1500 1000 500 0

INSTRUCTIONS FOR COMPLETION OF FORM C-128

1. Operator shall furnish and certify to the information called for in Section A.
2. Operator shall outline the dedicated acreage for *both* oil and gas wells on the plat in Section B.
3. A registered professional engineer or land surveyor registered in the State of New Mexico or approved by the Commission shall show on the plat the location of the well and certify this information in the space provided.
4. All distances shown on the plat must be from the outer boundaries of the Section.
5. If additional space is needed for listing owners and their respective interests as required in question 3 of Section A, please use space below.

OIL CONSERVATION COMMISSION		
ARTESIA DISTRICT OFFICE		
No. Copies Received		6
DISTRIBUTION		
	COPIES	
	FURNISHED	
OPERATOR		
SANTA FE		
PRORATION OFFICE		
STATE LAND OFFICE		
U. S. G. S.		
TRANSPORTER		
FILE		
BUREAU OF MINES		✓