

Santa Fe, New Mexico

JUN 12 1950

## NOTICE OF INTENTION TO DRILL

Notice must be given to the Oil Conservation Commission or its proper agent and approval obtained before drilling begins. If changes in the proposed plan are considered advisable, a copy of this notice showing such changes will be returned to the sender. Submit this notice in triplicate. One copy will be returned following approval. See additional instructions in Rules and Regulations of the Commission.

HOBBS OFFICE

30-005-00273

Midland, Texas

June 8, 1950

Place

Date

OIL CONSERVATION COMMISSION,  
Santa Fe, New Mexico,

Gentlemen:

You are hereby notified that it is our intention to commence the drilling of a well to be known as \_\_\_\_\_

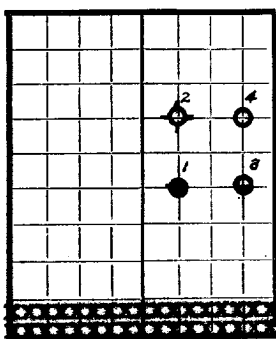
HONOLULU OIL CORPORATION State of New Mexico well No. 4 in SE 1/4 of NE 1/4

Company or Operator

Lease

of Sec. 13, T. 11-S, R. 27-E, N. M., P. M., Wildcat Field, Chaves County.

N



AREA 640 ACRES

LOCATE WELL CORRECTLY

The well is 1980 feet (~~200~~) (S.) of the North line and 660 feet (~~660~~) (W.) of the East line of Section 13

(Give location from section or other legal subdivision lines. Cross out wrong directions.)

If state land the oil and gas lease is No. B-8385 Assignment No. -

If patented land the owner is State of New Mexico

Address State Land Office, Santa Fe, New Mexico

If government land the permittee is \_\_\_\_\_

Address \_\_\_\_\_

The lessee is \_\_\_\_\_

Address \_\_\_\_\_

approximately 6,700 feet.

We propose to drill well with drilling equipment as follows: Rotary tools to

The status of a bond for this well in conformance with Rule 35 of the General Rules and Regulations of the Commission is as follows: Blanket bond filed with New Mexico Oil Conservation Commission

We propose to use the following strings of casing and to land or cement them as indicated:

Size of Hole	Size of Casing	Weight Per Foot	New or Second Hand	Depth	Landed or Cemented	Sacks Cement
17"	13-3/8"	48#	New	± 30'	Cemented	± 50 - Conductor pipe
12-1/4"	8-5/8"	32#	New	± 2200'	Cemented	± 500
7-7/8"	5-1/2"	15-1/2#	New	± 6500'	Cemented	± 500

If changes in the above plan become advisable we will notify you before cementing or landing casing. We estimate that the first productive oil or gas sand should occur at a depth of about 6,500 feet.

Additional information:

JUN 12 1950

Approved \_\_\_\_\_ 19\_\_\_\_

except as follows:

Sincerely yours,

HONOLULU OIL CORPORATION

Company or Operator

By

George R. Hoy

Position Division Development Geological Engineer

Send communications regarding well to:

Name

George R. Hoy

Address

P. O. Drawer 1391

Midland, Texas

OIL CONSERVATION COMMISSION,

By

Title

Oil &amp; Gas Inspector

