

NEW MEXICO OIL CONSERVATION COMMISSION
Santa Fe, New Mexico

Form C-101
Revised (12/1/55)

NOTICE OF INTENTION TO DRILL

RECEIVED

AUG 31 1960

30005-00291

Notice must be given to the District Office of the Oil Conservation Commission and approval obtained before drilling or recompletion begins. If changes in the proposed plan are considered advisable, a copy of this notice showing such changes will be returned to the sender. Submit this notice in **QUINTUPLICATE**. One copy will be returned following approval. See additional instructions in Rules and Regulations of the Commission. If State Land submit 6 Copies Attach Form C- 128 in triplicate to District Office.

Roswell, New Mexico

August 30, 1960

(Place)

(Date)

OIL CONSERVATION COMMISSION
SANTA FE, NEW MEXICO

Gentlemen:

You are hereby notified that it is our intention to commence the Drilling of a well to be known as

Ernest A. Hanson

(Company or Operator)

Levick State "D"

(Lease)

Well No. 2, in H (Unit) The well is

located 1650 feet from the North line and 330 feet from the

East

line of Section 15, T. 11S, R. 27E, NMPM.

(GIVE LOCATION FROM SECTION LINE)

Coyote Queen

Pool,

Chaves

County

If State Land the Oil and Gas Lease is No. E-8732

If patented land the owner is

Address

We propose to drill well with drilling equipment as follows: Rotary to 1000'

The status of plugging bond is State wide

Drilling Contractor Waters Drilling Company

Artesia, New Mexico

We intend to complete this well in the Queen Formation

formation at an approximate depth of 1000 feet.

CASING PROGRAM

We propose to use the following strings of Casing and to cement them as indicated:

Size of Hole	Size of Casing	Weight per Foot	New or Second Hand	Depth	Sacks Cement
9"	7"	20'	New	150	Circ.
6 1/2"	4 1/2"	9 1/2'	New	1000	Circ.

If changes in the above plans become advisable we will notify you immediately.

ADDITIONAL INFORMATION (If recompletion give full details of proposed plan of work.)

Approved _____, 19____
Except as follows:

OIL CONSERVATION COMMISSION

By M. L. Armstrong

Sincerely yours,

Ernest A. Hanson

(Company or Operator)

By

Position Geologist

Send Communications regarding well to

Name Ernest A. Hanson

Address P. O. Box 852, Roswell, N. M.

NEW MEXICO OIL CONSERVATION COMMISSION
WELL LOCATION AND ACREAGE DEDICATION PLAT

FORM C-128
Revised 5/1/57

SEE INSTRUCTIONS FOR COMPLETING THIS FORM ON THE REVERSE SIDE

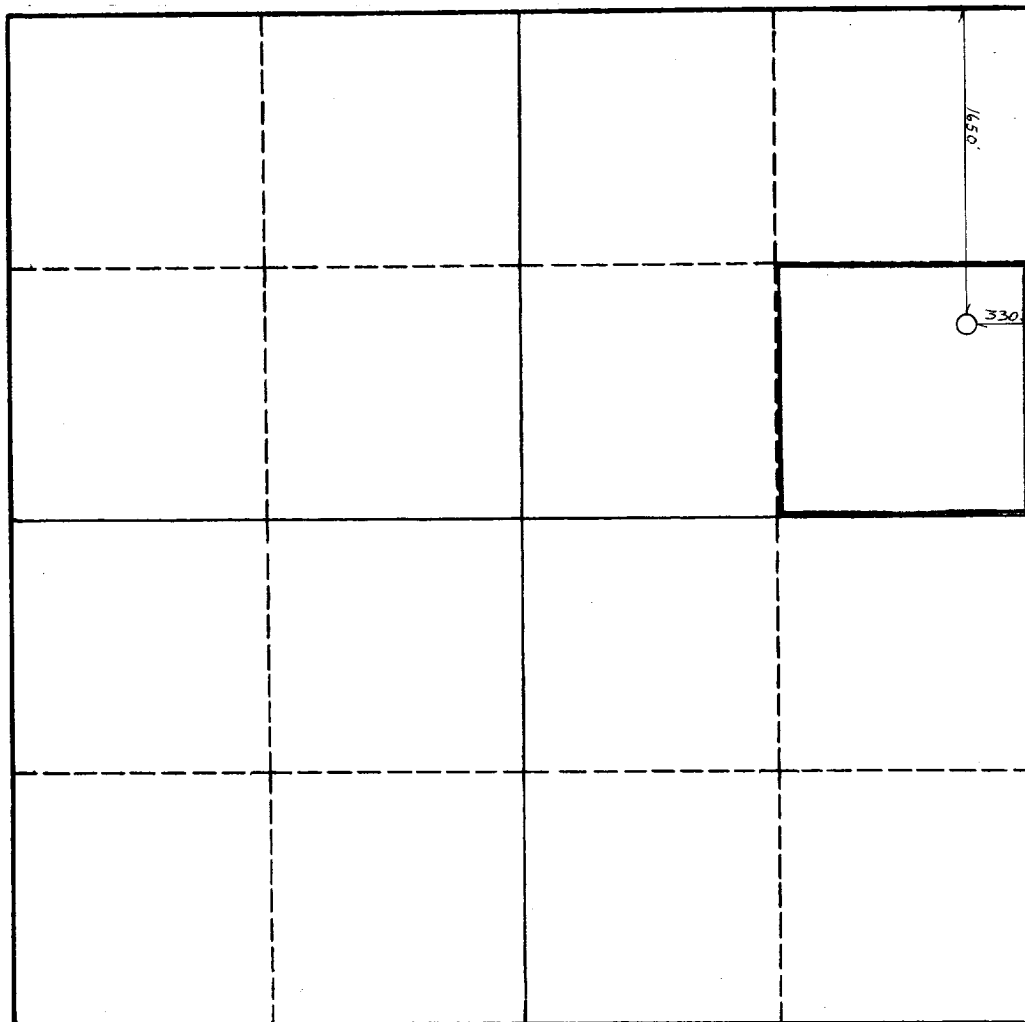
SECTION A

Operator Ernest A. Hanson		Lease Levick State "D"		Well No. AUG 31 1960
Unit Letter H	Section 15	Township 11-South	Range 27-East	County Chavez, N. M.
Actual Footage Location of Well: 1450 feet from the North line and 330 feet from the East line				
Ground Level Elev. 3718	Producing Formation Queen Formation	Pool Coyote Queen	Dedicated Acreage: 40 Acres	

1. Is the Operator the only owner in the dedicated acreage outlined on the plat below? YES _____ NO **X**. ("Owner" means the person who has the right to drill into and to produce from any pool and to appropriate the production either for himself or for himself and another. (65-3-29 (e) NMSA 1935 Comp.)
2. If the answer to question one is "no," have the interests of all the owners been consolidated by communization agreement or otherwise? YES **X** NO _____. If answer is "yes," Type of Consolidation **Lease assignment**
3. If the answer to question two is "no," list all the owners and their respective interests below:

Owner	Land Description

SECTION B



CERTIFICATION

I hereby certify that the information in SECTION A above is true and complete to the best of my knowledge and belief.

Name Harry F. Schram
Position Geologist
Company Ernest A. Hanson
Date August 30, 1960

I hereby certify that the well location shown on the plat in SECTION B was plotted from field notes of actual surveys made by me or under my supervision, and that the same is true and correct to the best of my knowledge and belief.

Date Surveyed August 30, 1960
Registered Professional Engineer and/or Land Surveyor W. P. Sheldon
Certificate No. 963

0 330 660 990 1320 1650 1980 2310 2640 2000 1500 1000 500 0

INSTRUCTIONS FOR COMPLETION OF FORM C-128

1. Operator shall furnish and certify to the information called for in Section A.
2. Operator shall outline the dedicated acreage for *both* oil and gas wells on the plat in Section B.
3. A registered professional engineer or land surveyor registered in the State of New Mexico or approved by the Commission shall show on the plat the location of the well and certify this information in the space provided.
4. All distances shown on the plat must be from the outer boundaries of the Section.
5. If additional space is needed for listing owners and their respective interests as required in question 3 of Section A, please use space below.

OIL CONSERVATION COMMISSION		
ARTESIA DISTRICT OFFICE		
No. Copies Received		6
DISTRIBUTION		
	NO. FURNISHED	
OPERATOR	1	
SANTA FE	1	
PRORATION OFFICE		
STATE LAND OFFICE	1	
U. S. G. S.	2	
TRANSPORTER		
FILE	1	✓
BUREAU OF MINES		