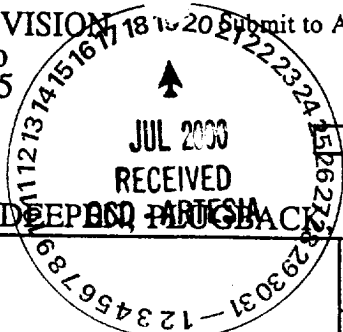


District I
PO Box 1980, Hobbs, NM 88241-1980
District II
811 South First, Artesia, NM 88210
District III
1000 Rio Brazos Rd., Aztec, NM 87410
District IV
2040 South Pacheco, Santa Fe, NM 87505

State of New Mexico
Energy, Minerals & Natural Resources Department

OIL CONSERVATION DIVISION
2040 South Pacheco
Santa Fe, NM 87505

Form C-101
Revised October 18, 1994
Instructions on back
Submit to Appropriate District Office
State Lease - 6 Copies
Fee Lease - 5 Copies



AMENDED REPORT

APPLICATION FOR PERMIT TO DRILL, RE-ENTER, DEEPEN, PLUG BACK, OR ADD A ZONE

¹ Operator Name and Address. Yates Petroleum Corporation 105 S. 4th Street Artesia, New Mexico 88210		² OGRID Number 025575
⁴ Property Code 26369		³ API Number 30-005-00334
⁴ Property Name Ambush AWE State		⁵ Well No. 1

⁷ Surface Location

UL or lot no.	Section	Township	Range	Lot Idn	Feet from the	North/South line	Feet from the	East/West line	County
M	12	12S	27E		660'	South	660'	West	Chaves

⁸ Proposed Bottom Hole Location If Different From Surface

UL or lot no.	Section	Township	Range	Lot Idn	Feet from the	North/South line	Feet from the	East/West line	County

⁹ Proposed Pool 1 Wildcat Ordovician	¹⁰ Proposed Pool 2
--	-------------------------------

¹¹ Work Type Code E	¹² Well Type Code G	¹³ Cable/Rotary Pulling Unit	¹⁴ Lease Type Code S	¹⁵ Ground Level Elevation 3808'
¹⁶ Multiple N	¹⁷ Proposed Depth 8026'	¹⁸ Formation Ordovician	¹⁹ Contractor Not Determined	²⁰ Spud Date ASAP

²¹ Proposed Casing and Cement Program

Hole Size	Casing Size	Casing weight/foot	Setting Depth	Sacks of Cement	Estimated TOC
12 1/4"	9 5/8"	36#	1608'	700 sx	In Place
8 3/4"	5 1/2"	15.5#	2354'	150 sx	In Place
8 3/4"	4"	11#	8026'	1000 sx	TOC- 3000'

²² Describe the proposed program. If this application is to DEEPEN or PLUG BACK give the data on the present productive zone and proposed new productive zone. Describe the blowout prevention program, if any. Use additional sheets if necessary.

SEE ATTACHED PAGE #2.

PLEASE NOTE: THIS STATE LEASE WILL EXPIRE AUGUST 1, 2000, IF THIS WELL IS NOT SPUDED BY THEN.

²³ I hereby certify that the information given above is true and complete to the best of my knowledge and belief. Signature: <i>Cy Cowan</i>		OIL CONSERVATION DIVISION	
Printed name: Cy Cowan		Approved by: <i>James W. Green</i> BGA	
Title: REGULATORY AGENT		Title: <i>District Supervisor</i>	
Date: July 19, 2000		Approval Date: JUL 19 2000	Expiration Date: JUL 19 2001
Phone: 505-748-4347		Conditions of Approval: Attached <input type="checkbox"/>	

YATES PETROLEUM CORPORATION

Ambush AWE State #1

Drilling Prognosis

Page 2

This well was originally drilled by George R. Gibson as the Humble State #1. It was spudded on June 4, 1952.

Yates Petroleum Corporation proposes to re-enter this well with a pulling unit and reverse unit to drill out the cement plugs in the 5 1/2" casing down to 2,354' and the plug in the 8 3/4" open hole then wash down to the old TD of 8026'. A new suite of open hole logs will be run then 4 " flush joint casing will be run to bottom and cemented with enough cement to bring the top of cement to 3,000'+/-.

MUD PROGRAM: Brine Water (Weight: 9.2-9.5, Vis: 55-70).

BOPE PROGRAM: 3000 # BOPE will be nipped up on 9 5/8 in casing.

District I
1625 N. French Dr., Hobbs, NM 88240

District II
811 South First, Artesia, NM 88210

District III
1000 Rio Brazos Rd., Aztec, NM 87410

District IV
2040 South Pacheco, Santa Fe, NM 87505

State of New Mexico
Energy, Minerals & Natural Resources

OIL CONSERVATION DIVISION
2040 South Pacheco
Santa Fe, NM 87505

Form C-102
Revised March 17, 1999

Submit to Appropriate District Office
State Lease - 4 Copies
Fee Lease - 3 Copies

☐ AMENDED REPORT

WELL LOCATION AND ACREAGE DEDICATION PLAT

¹ API Number		² Pool Code		³ Pool Name Wildcat Ordovician	
⁴ Property Code		⁵ Property Name Ambush AWE State			⁶ Well Number 1
⁷ OGRID No. 025575		⁸ Operator Name YATES PETROLEUM CORPORATION			⁹ Elevation 3808'

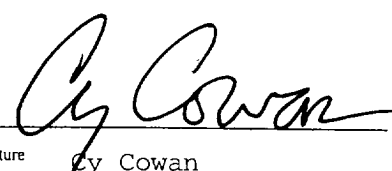
¹⁰ Surface Location

UL or lot no.	Section	Township	Range	Lot Idn	Feet from the	North/South line	Feet from the	East/West line	County
M	12	12S	27E		660'	South	660'	West	Chaves

¹¹ Bottom Hole Location If Different From Surface

UL or lot no.	Section	Township	Range	Lot Idn	Feet from the	North/South line	Feet from the	East/West line	County
¹² Dedicated Acres 320		¹³ Joint or Infill		¹⁴ Consolidation Code		¹⁵ Order No.			

NO ALLOWABLE WILL BE ASSIGNED TO THIS COMPLETION UNTIL ALL INTERESTS HAVE BEEN CONSOLIDATED OR A NON-STANDARD UNIT HAS BEEN APPROVED BY THE DIVISION

16					¹⁷ OPERATOR CERTIFICATION I hereby certify that the information contained herein is true and complete to the best of my knowledge and belief.  Signature Cy Cowan Printed Name Regulatory Agent Title July 18, 2000 Date				
						¹⁸ SURVEYOR CERTIFICATION I hereby certify that the well location shown on this plat was plotted from field notes of actual surveys made by me or under my supervision, and that the same is true and correct to the best of my belief. REFER OT ORIGINAL PLAT Date of Survey Signature and Seal of Professional Surveyor: Certificate Number			

UO - 4700
4PC

660'

SURVEYOR'S CERTIFICATE

RECEIVED

1952

State of New Mexico
County of Bernalillo
HOBBS-OFFICE

Date: May 13 1952

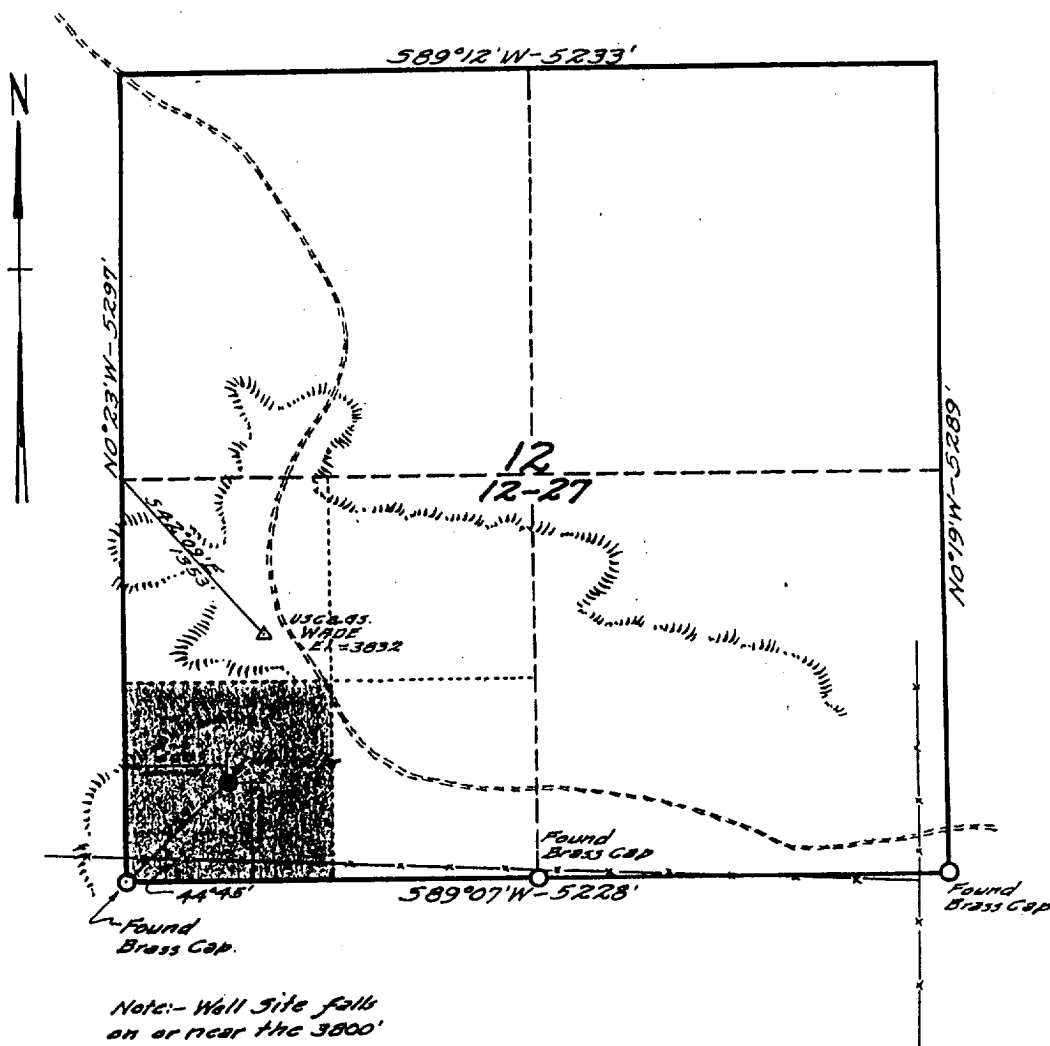
Field Book 88 Page 47

Survey made for G. B. Gibson -----

at request of E. A. McClure & Geo. R. Gibson

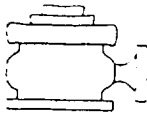
Party:- Aubrey B. Gregg
Clyde Holdridge
Archie R. Rollins

Surveyor
N. M. Certificate No. 334



Note:- Well Site falls on or near the 3800' Contour of USGS Topog. Map, "WADE"

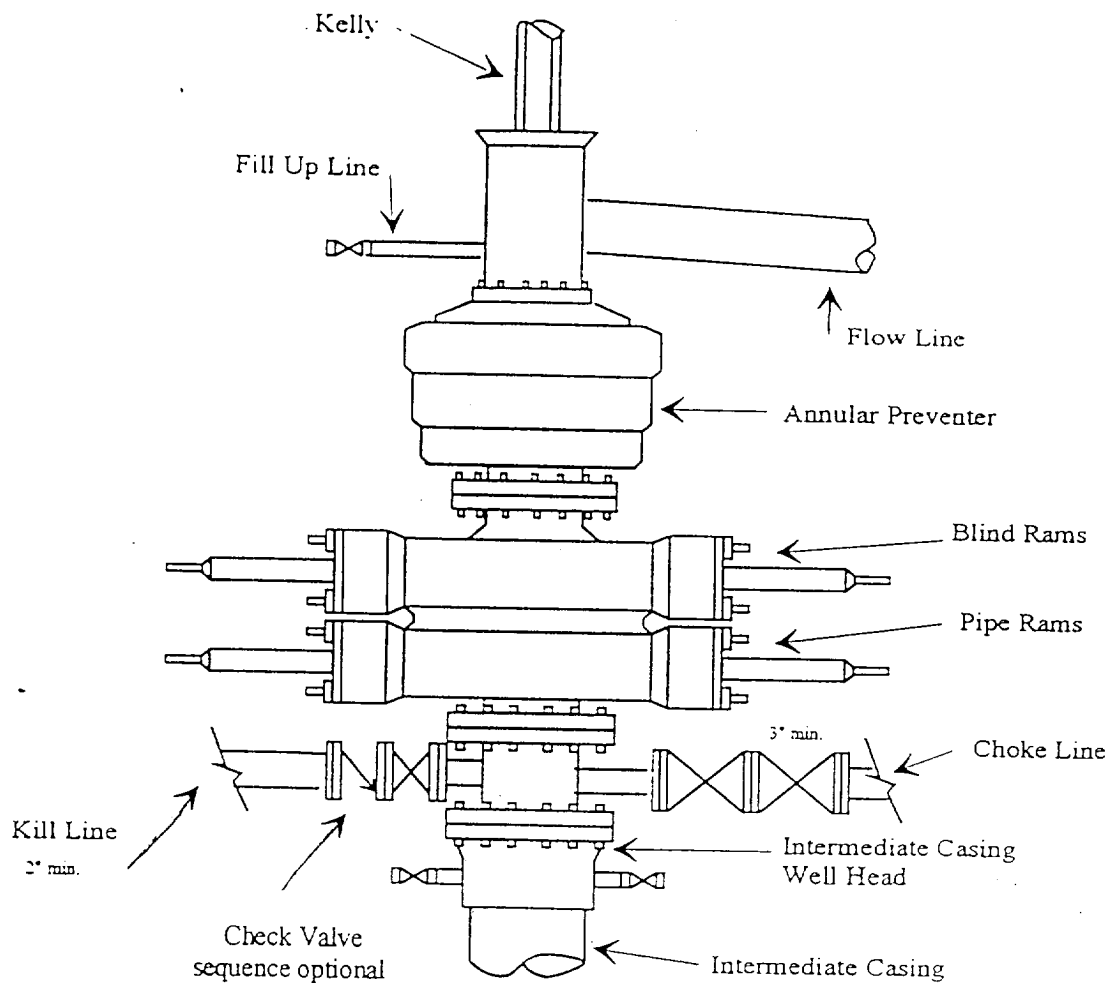
Scale:- 1"=1000'



Yates Petroleum Corporation

BOP-3

Typical 3,000 psi Pressure System Schematic Annular with Double Ram Preventer Stack



Typical 3,000 psi choke manifold assembly with at least these minimum features

