

NUMBER OF COPIES RECEIVED	
DISTRIBUTION	
SANTA FE	1
FILE	2
U.S.G.S.	
LAND OFFICE	
TRANSPORTER	
OIL GAS	
PROBATION OFFICE	
OPERATOR	1

NEW MEXICO OIL CONSERVATION COMMISSION
Santa Fe, New Mexico

Form C-101
Revised (12/1/55)

NOTICE OF INTENTION TO DRILL

30-005-10077

Notice must be given to the District Office of the Oil Conservation Commission and approval obtained before drilling or recompletion begins. If changes in the proposed plan are considered advisable, a copy of this notice showing such changes will be returned to the sender. Submit this notice in QUINTUPPLICATE. One copy will be returned following approval. See additional instructions in Rules and Regulations of the Commission. If State Land submit 6 Copies Attach Form G- 128 in triplicate to first 3 copies of form C-101

(Place)

(Date)

OIL CONSERVATION COMMISSION
SANTA FE, NEW MEXICO

Gentlemen:

You are hereby notified that it is our intention to commence the Drilling of a well to be known as

Stephen G. Helbing and Frank W. Podpechar
(Company or Operator)

Texaco - White Ranch

(Lease)

, Well No. **1**, in **H** (Unit) The well is

located **660** feet from the **South** line and **1980** feet from the

West

line of Section **25**, T. **10S**, R. **27E**, NMPM.

(GIVE LOCATION FROM SECTION LINE)

Wildcat Pool, **Chaves** County

If State Land the Oil and Gas Lease is No.

If patented land the owner is **Avalanche Journal Publishing Co.**

Address **Amarillo, Texas**

We propose to drill well with drilling equipment as follows: **Cable Tools**

The status of plugging bond is

Drilling Contractor **A. M. Russell and Son**

We intend to complete this well in the **San Andres** formation at an approximate depth of **2250** feet.

CASING PROGRAM

We propose to use the following strings of Casing and to cement them as indicated:

Size of Hole	Size of Casing	Weight per Foot	New or Second Hand	Depth	Sacks Cement
	10'	45#	Second hand	250'	50sax
	5 1/2"		Second hand	2250'	125 sax

If changes in the above plans become advisable we will notify you immediately.

ADDITIONAL INFORMATION (If recompletion give full details of proposed plan of work.)

RECEIVED

SEP 4 1963

SEP 4 1963

Approved....., 19.....
Except as follows:

Sincerely yours,

Stephen G. Helbing
(C. C. C. ARTESIA, OFFICE)
(Company or Operator)

By.....

Position..... Send Communications regarding well to

Name **S. C. Helbing**

Address **Box 568, Roswell, N.M.**

OIL CONSERVATION COMMISSION

By **M. L. Armstrong**

NUMBER OF COPIES RECEIVED	
DISTRIBUTION	
SANTA FE	
FILE	
U.S.G.S.	
LAND OFFICE	
TRANSPORTER	OIL GAS
PRODUCTION OFFICE	
OPERATOR	

NEW MEXICO OIL CONSERVATION COMMISSION
WELL LOCATION AND ACREAGE DEDICATION PLAT
 SEE INSTRUCTIONS FOR COMPLETING THIS FORM ON THE REVERSE SIDE

FORM C-128
Revised 5/1/57

SECTION A

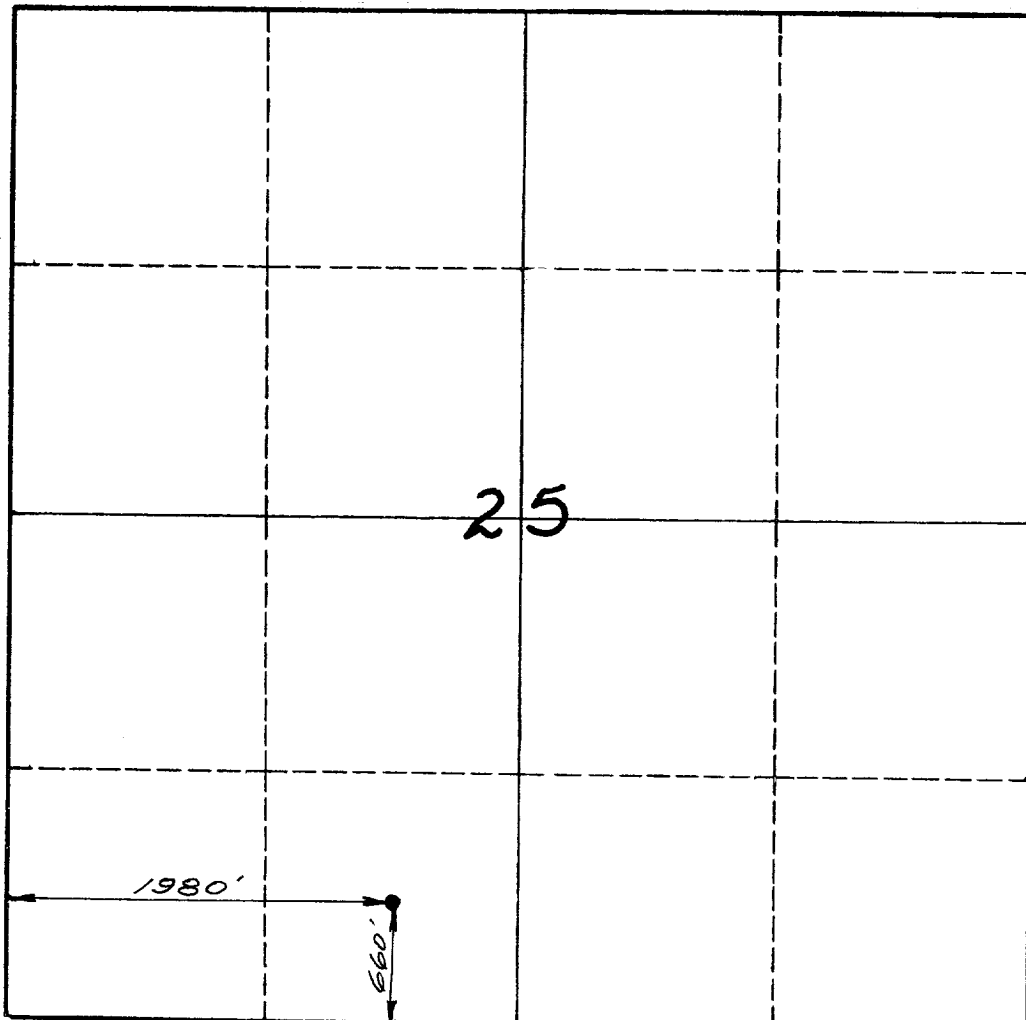
Operator STEPHEN C. HELBING and Frank W. Podpechan		Lease Texico- WHITE RANCH		Well No. 1
Unit Letter N	Section 25	Township 10-S	Range 27-E	County Chaves
Actual Footage Location of Well: 660 feet from the South line and 1980 feet from the West line				
Ground Level Elev. 3723.35	Producing Formation	Pool WILDCAT	Dedicated Acreage: Acres	

1. Is the Operator the only owner in the dedicated acreage outlined on the plat below? YES ☒ NO ____ . ("Owner" means the person who has the right to drill into and to produce from any pool and to appropriate the production either for himself or for himself and another. (65-3-29 (e) NMSA 1935 Comp.)
2. If the answer to question one is "no," have the interests of all the owners been consolidated by communitization agreement or otherwise? YES ____ NO ____ . If answer is "yes," Type of Consolidation ____
3. If the answer to question two is "no," list all the owners and their respective interests below:

RECEIVED

Owner	Land Description
	SEP 4 1963

SECTION B



O. C. C.
ARTESIA, OFFICE
CERTIFICATION

I hereby certify that the information in SECTION A above is true and complete to the best of my knowledge and belief.

Name STEPHEN C. HELBING
Position <i>Stephen C. Helbing</i>
Company SELF
Date SEPT. 2, 1963

I hereby certify that the well location shown on the plat in SECTION B was plotted from field notes of actual surveys made by me or under my supervision, and that the same is true and correct to the best of my knowledge and belief.

Date Surveyed July 5, 1963
Registered Professional Engineer and/or Land Surveyor <i>John C. Helbing</i>
Certificate No. 3241

INSTRUCTIONS FOR COMPLETION OF FORM C-128

1. Operator shall furnish and certify to the information called for in Section A.
2. Operator shall outline the dedicated acreage for *both* oil and gas wells on the plat in Section B.
3. A registered professional engineer or land surveyor registered in the State of New Mexico or approved by the Commission shall show on the plat the location of the well and certify this information in the space provided.
4. All distances shown on the plat must be from the outer boundaries of the Section.
5. If additional space is needed for listing owners and their respective interests as required in question 3 of Section A, please use space below.