

NEW MEXICO OIL CONSERVATION COMMISSION
WELL LOCATION AND ACREAGE DEDICATION PLAT

FORM C-128
Revised 3/1/57

SEE INSTRUCTIONS FOR COMPLETING THIS FORM ON THE REVERSE SIDE

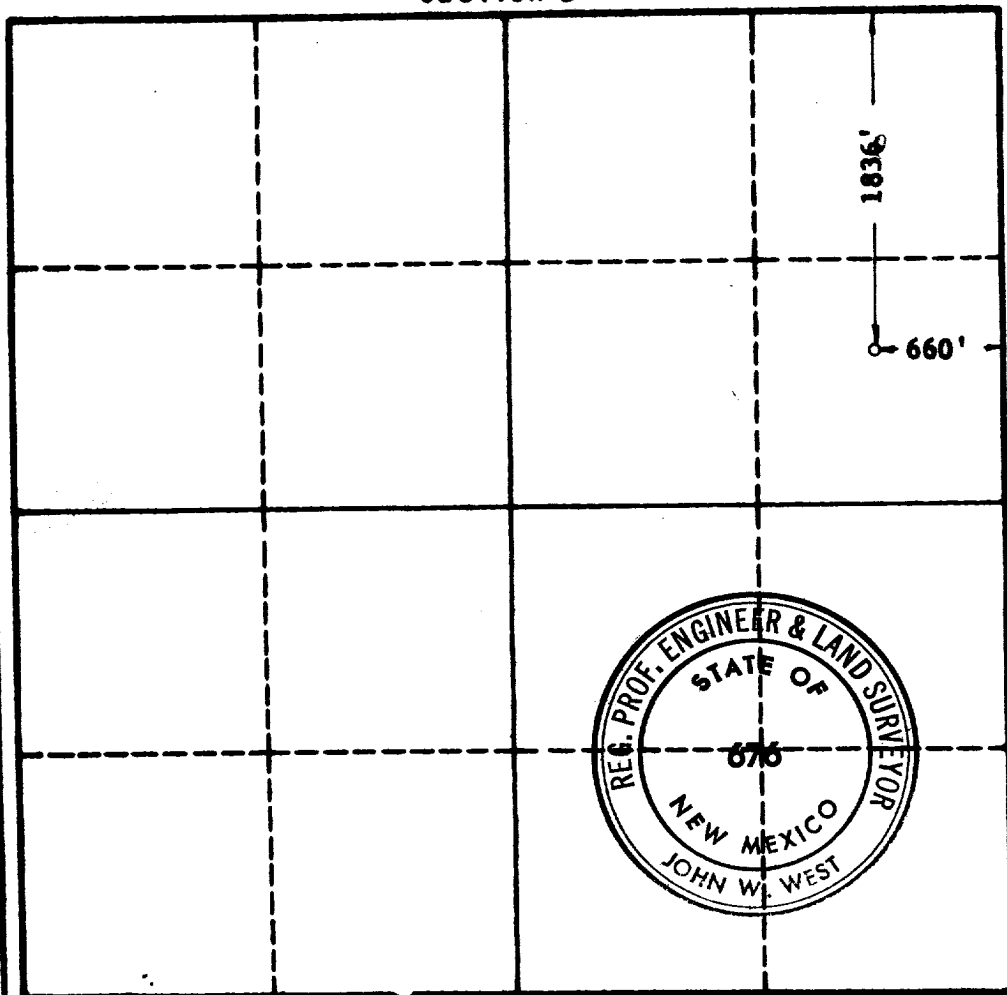
SECTION A

Operator I. W. LOVELADY		Lease WHITE RANCH		Well No. 2
Unit Letter H	Section 1	Township 12 SOUTH	Range 28 EAST	County CHAVES
Actual Footage Location of Well: 1836 feet from the NORTH line and 660 feet from the EAST line				
Ground Level Elev. 3685.8'	Producing Formation Devonian	Pool West White Ranch-Devonian	Dedicated Acreage: 80 Acres	

1. Is the Operator the only owner in the dedicated acreage outlined on the plat below? YES X NO ____ ("Owner" means the person who has the right to drill into and to produce from any pool and to appropriate the production either for himself or for himself and another. (65-9-29 (a) NMSA 1955 Comp.)
2. If the answer to question one is "no," have the interests of all the owners been consolidated by communication agreement or otherwise? YES ____ NO ____ If answer is "yes," Type of Consolidation RECEIVED
3. If the answer to question two is "no," list all the owners and their respective interests below:

Owner	Land Description NOV 16 1964
	O. C. C.

SECTION B



ARTESIA, OFFICE
CERTIFICATION

I hereby certify that the information in SECTION A above is true and complete to the best of my knowledge and belief.

Name <i>Ralph N. Conley</i>
Position Office Manager
Company I. W. Lovelady
Date November 12, 1964

I hereby certify that the well location shown on the plat in SECTION B was plotted from field notes of actual surveys made by me or under my supervision, and that the same is true and correct to the best of my knowledge and belief.

Date Surveyed 11-9-1964
Registered Professional Engineer and/or Land Surveyor, JOHN W. WEST
Certificate No. <i>John W. West</i> N. M. P. E. & L. S. NO. 676

0 300 600 900 1200 1500 1800 2100 2400 2700 3000 3300 3600 3900 4200 4500 4800 5100 5400 5700 6000

OIL CONSERVATION COMMISSION		
ARTESIA DISTRICT OFFICE		
No. Copies Received 5		
DISTRIBUTION		
	COPIES FURNISHED	
OPERATOR	1	
SANTA FE	1	
PRORATION OFFICE		
STATE LAND OFFICE		
U. S. G. S.	2	
TRANSPORTER		
FILE	1 -	
BUREAU OF MINES		