

UNITED STATES  
DEPARTMENT OF THE INTERIOR  
GEOLOGICAL SURVEY(Other instructions on  
reverse side)30-005-10186  
5. LEASE DESIGNATION AND SERIAL NO.  
NM-056248

## APPLICATION FOR PERMIT TO DRILL, DEEPEN, OR PLUG BACK

## 1a. TYPE OF WORK

DRILL ☒DEEPEN ☐PLUG BACK ☐

## b. TYPE OF WELL

OIL  
WELL ☒GAS  
WELL ☐

OTHER

SINGLE  
ZONE ☒MULTIPLE  
ZONE ☐

## 2. NAME OF OPERATOR

Shell Oil Company

## 3. ADDRESS OF OPERATOR

P. O. Box 1858, Roswell, New Mexico 88201

## 4. LOCATION OF WELL (Report location clearly and in accordance with any State requirements.)\*

At surface 990' FNL &amp; 1650' FWL (NE/4 NW/4) Section 14, T-7-S,

R-26-E, NMPL Survey, Chaves County, New Mexico

At proposed prod. zone

## 6. IF INDIAN, ALLOTTEE OR TRIBE NAME

## 7. UNIT AGREEMENT NAME

## 8. FARM OR LEASE NAME

Lodewick-Federal

## 9. WELL NO.

1

## 10. FIELD AND POOL, OR WILDCAT

wildcat

## 11. SEC., T., R., M., OR BLK.

AND SURVEY OR AREA  
Section 14, T-7-S, R-26-E,

NMPL

## 12. COUNTY

Chaves

## 13. STATE

New Mexico

## 14. DISTANCE IN MILES AND DIRECTION FROM NEAREST TOWN OR POST OFFICE\*

24 miles northeast of Roswell, New Mexico

## 15. DISTANCE FROM PROPOSED\*

LOCATION TO NEAREST  
PROPERTY OR LEASE LINE, FT.  
(Also to nearest drlg. unit line, if any)

990'

## 16. NO. OF ACRES IN LEASE

640

17. NO. OF ACRES ASSIGNED  
TO THIS WELL

40

18. DISTANCE FROM PROPOSED LOCATION\*  
TO NEAREST WELL, DRILLING, COMPLETED,  
OR APPLIED FOR, ON THIS LEASE, FT.

-

## 19. PROPOSED DEPTH

1550'

## 20. ROTARY OR CABLE TOOLS

Rotary

## 21. ELEVATIONS (Show whether DF, RT, GR, etc.)

3800' DF estimated

## 22. APPROX. DATE WORK WILL START\*

on approval of this form

## 23.

## PROPOSED CASING AND CEMENTING PROGRAM

SIZE OF HOLE	SIZE OF CASING	WEIGHT PER FOOT	SETTING DEPTH	QUANTITY OF CEMENT
6 1/4"	4 1/2"	9.5# & 11.6#	1550'	*

\* All water zones will be cemented off by circulating cement in production string or by running 1" tubing down annulus and cementing.

It is proposed to drill to 1,550 feet to test the Slaughter zone of the San Andres formation. The interval from 1,400 to T.D. will be cored. If commercial pay is found, completion will be made through 4 1/2" casing by perforating and acidizing.

RECEIVED

JUL 27 1965

O. C. C.  
ARTESIA, OFFICE

IN ABOVE SPACE DESCRIBE PROPOSED PROGRAM: If proposal is to deepen or plug back, give data on present productive zone and proposed new productive zone. If proposal is to drill or deepen directionally, give pertinent data on subsurface locations and measured and true vertical depths. Give blowout preventer program, if any.

## 24.

Original Signed By  
C. R. Coffey C. R. Coffey

TITLE

Acting District  
Exploitation Engineer

DATE July 26, 1965

(This space for Federal or State office use)

PERMIT NO.

APPROVAL DATE

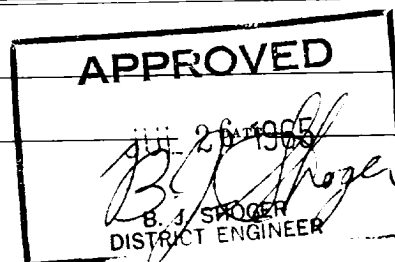
APPROVED BY

TITLE

CONDITIONS OF APPROVAL, IF ANY:

NMOCC - ARTESIA  
NMOCC - HOBBS  
BLM - SANTA FE

\*See Instructions On Reverse Side



## Instructions

**General:** This form is designed for submitting proposals to perform certain well operations, as indicated, on all types of lands and leases for appropriate action by either a Federal or a State agency, or both, pursuant to applicable Federal and/or State laws and regulations. Any necessary special instructions concerning the use of this form and the number of copies to be submitted, particularly with regard to local, area, or regional procedures and practices, either are shown below or will be issued by, or may be obtained from, the local Federal and/or State office.

**Item 1:** If the proposal is to redrill to the same reservoir at a different subsurface location or to a new reservoir, use this form with appropriate notations. Consult applicable State or Federal regulations concerning subsequent work proposals or reports on the well.

**Item 4:** If there are no applicable State requirements, locations on Federal or Indian land should be described in accordance with Federal requirements. Consult local State or Federal office for specific instructions.

**Item 14:** Needed only when location of well cannot readily be found by road from the land or lease description. A plat, or plats, separate or on this reverse side, showing the roads to, and the surveyed location of, the well, and any other required information, should be furnished when required by Federal or State agency offices.

**Items 15 and 18:** If well is to be, or has been directionally drilled, give distances for subsurface location of hole in any present or objective production zone.

**Item 22:** Consult applicable Federal or State regulations, or appropriate officials, concerning approval of the proposal before operations are started.

**MEXICO OIL CONSERVATION COMMISSION  
WELL LOCATION AND ACREAGE DEDICATION PLAT**

Form C-102  
Supersedes C-128  
Effective 1-1-65

All distances must be from the outer boundaries of the Section.

Operator <b>Shell Oil Company</b>			Lease <b>Lodewick-Federal</b>		Well No. <b>1</b>
Unit Letter <b>C</b>	Section <b>14</b>	Township <b>7S</b>	Range <b>26E</b>	County <b>Chaves</b>	
Actual Footage Location of Well: <b>990</b> feet from the <b>north</b> line and <b>1650</b> feet from the <b>west</b> line					
Ground Level Elev. <b>not available</b>	Producing Formation <b>S&amp;A Andres</b>		Pool <b>Wildcat</b>		Dedicated Acreage: <b>40</b> Acres

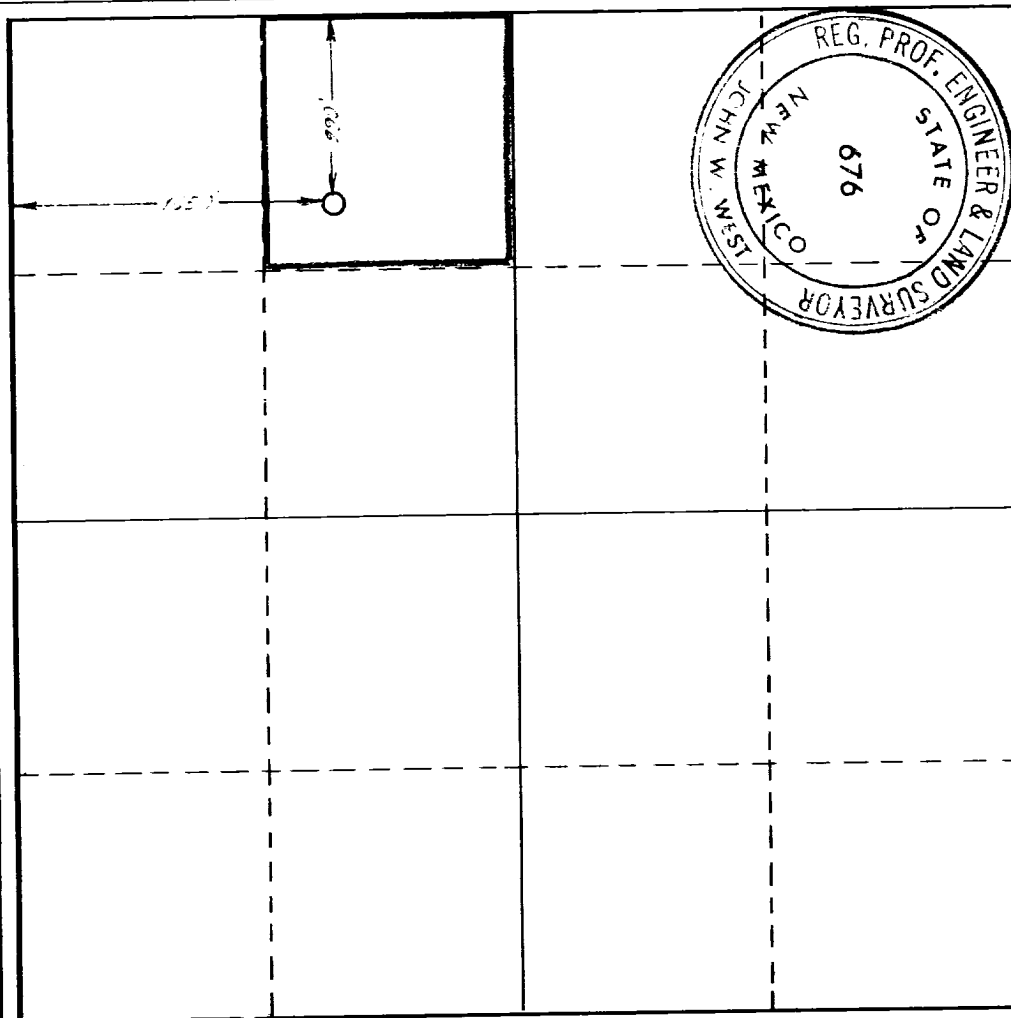
1. Outline the acreage dedicated to the subject well by colored pencil or hachure marks on the plat below.
2. If more than one lease is dedicated to the well, outline each and identify the ownership thereof (both as to working interest and royalty).
3. If more than one lease of different ownership is dedicated to the well, have the interests of all owners been consolidated by communitization, unitization, force-pooling, etc?

☐ Yes ☐ No If answer is "yes," type of consolidation \_\_\_\_\_

If answer is "no," list the owners and tract descriptions which have actually been consolidated. (Use reverse side of this form if necessary.) \_\_\_\_\_

No allowable will be assigned to the well until all interests have been consolidated (by communitization, unitization, forced-pooling, or otherwise) or until a non-standard unit, eliminating such interests, has been approved by the Commission.

**RECEIVED**



**CERTIFICATION**

I hereby certify that the information contained herein is true and complete to the best of my knowledge and belief.

Original Signed By  
**C. R. Coffey** **C. R. Coffey**  
Position  
**Acting District Exploitation Engineer**  
Company

**Shell Oil Company**

Date  
**JUL 26 1965**

I hereby certify that the well location shown on this plat was plotted from field notes of actual surveys made by me or under my supervision, and that the same is true and correct to the best of my knowledge and belief.

Date Surveyed  
**7-23-65**

Registered Professional Engineer and/or Land Surveyor

*[Signature]*  
Certificate No.  
**676**

0 330 660 990 1320 1650 1980 2310 2640 2000 1500 1000 500 0