

**NEW MEXICO OIL CONSERVATION COMMISSION
WELL LOCATION AND ACREAGE DEDICATION PLAT**

Form C-102
Supersedes C-128
Effective 1-1-65

All distances must be from the outer boundaries of the Section.

Operator CITIES SERVICE OIL CO.			Lease STONE "A"		Well No. 1
Unit Letter E	Section 20	Township 12 SOUTH	Range 26 EAST	County CHAVES	
Actual Footage Location of Well: 2080 feet from the NORTH line and 560 feet from the WEST line					
Ground Level Elev. Est. 4000 GL	Producing Formation Silurian-Devonian		Pool Undesignated <i>uc</i>		Dedicated Acreage: 40 Acres

1. Outline the acreage dedicated to the subject well by colored pencil or hachure marks on the plat below.
2. If more than one lease is dedicated to the well, outline each and identify the ownership thereof (both as to working interest and royalty).
3. If more than one lease of different ownership is dedicated to the well, have the interests of all owners been consolidated by communitization, unitization, force-pooling, etc?

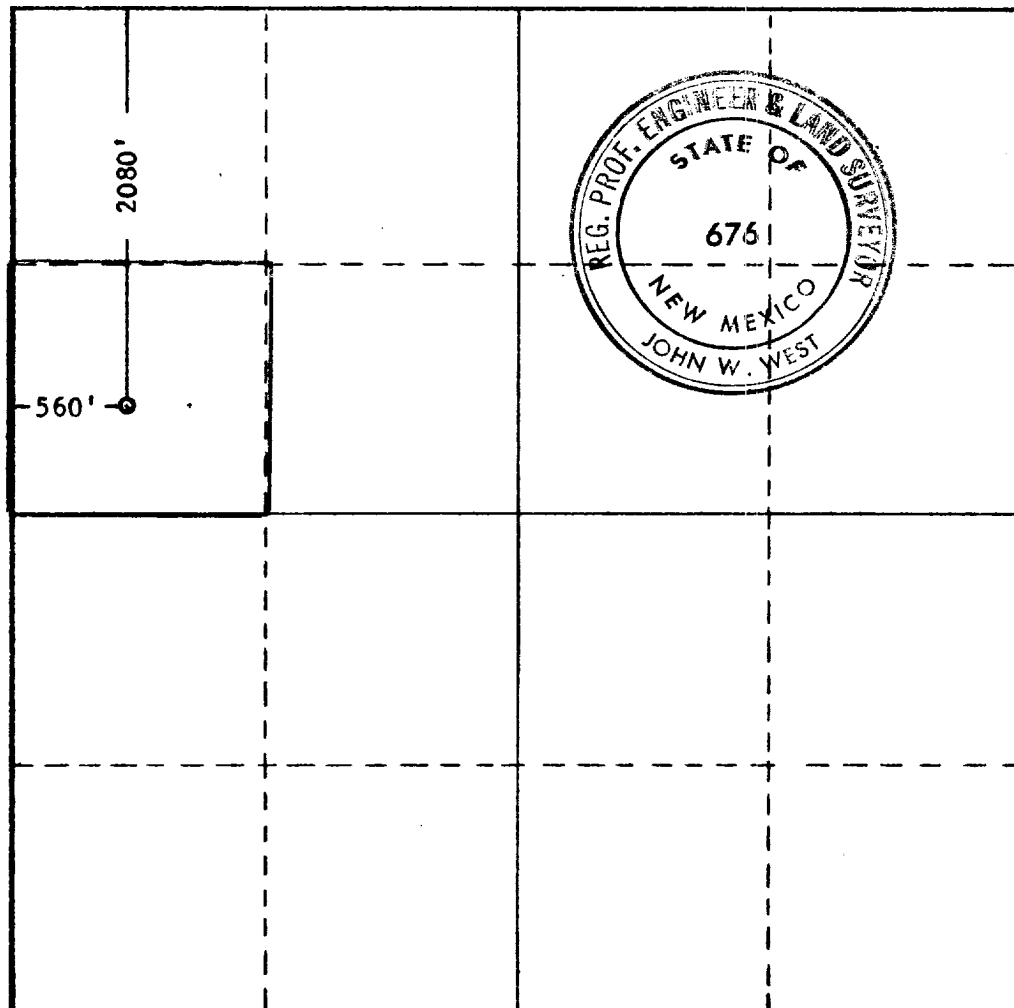
RECEIVED

MAY 27 1966

☐ Yes ☐ No If answer is "yes," type of consolidation _____

If answer is "no," list the owners and tract descriptions which have actually been consolidated **O. C. C. ARKANSAS OFFICE** of this form if necessary.) _____

No allowable will be assigned to the well until all interests have been consolidated (by communitization, unitization, forced-pooling, or otherwise) or until a non-standard unit, eliminating such interests, has been approved by the Commission.



CERTIFICATION

I hereby certify that the information contained herein is true and complete to the best of my knowledge and belief.

Name
C. Robertson
Position
District Clerk
Company
Cities Service Oil Co.
Date
5-26-66

I hereby certify that the well location shown on this plat was plotted from field notes of actual surveys made by me or under my supervision, and that the same is true and correct to the best of my knowledge and belief.

Date Surveyed
MAY 21, 1966

Registered Professional Engineer and/or Land Surveyor

John W. West
Certificate No. **676**

