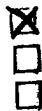


NM 322 - ARTESIA
NM 322 - ARTESIA
BLM - SUTHERLANDUNITED STATES
DEPARTMENT OF THE INTERIOR
GEOLOGICAL SURVEYSUBMIT IN LIGATE*
Other instructions on
reverse side)Form approved.
Budget Bureau No. 42-R1425.

20-005-10515

LEASE DESIGNATION AND SERIAL NO.
NM 0266414

IF INDIAN, ALLOTTEE OR TRIBE NAME

APPLICATION FOR PERMIT TO DRILL, DEEPEN, OR PLUG BACK

1a. TYPE OF WORK

DRILL ☒DEEPEN ☐PLUG BACK ☐

7. UNIT AGREEMENT NAME

b. TYPE OF WELL

OIL
WELL ☒GAS
WELL ☐

OTHER

SINGLE
ZONE ☒MULTIPLE
ZONE ☐

8. FARM OR LEASE NAME

Strange - Federal

9. WELL NO.

1

10. FIELD AND POOL, OR WILDCAT

Wildcat

11. SEC., T., R., M., OR BLK.
AND SURVEY OR AREA

Sec 24, T9S, R29E

12. COUNTY OR PARISH

Chaves

13. STATE

New Mexico

2. NAME OF OPERATOR

Grover, MacCurdy and Hoffacker

3. ADDRESS OF OPERATOR

306 Midland National Bank Building, Midland, Texas

4. LOCATION OF WELL (Report location clearly and in accordance with any State regulations.)
At surface 660' FNL & 660' FWL of Section 24

At proposed prod. zone

660' FNL & 660' FWL of Section 24

SEP 19 1966

14. DISTANCE IN MILES AND DIRECTION FROM NEAREST TOWN OR POST OFFICE*

12 miles SE Elkins, New Mexico

O. C. C.

15. DISTANCE FROM PROPOSED*

LOCATION TO NEAREST
PROPERTY OR LEASE LINE, FT.
(Also to nearest drlg. unit line, if any) 66016. NO. OF ACRES ASSIGNED
TO THIS WELL

320

40

18. DISTANCE FROM PROPOSED LOCATION*
TO NEAREST WELL, DRILLING, COMPLETED,
OR APPLIED FOR, ON THIS LEASE, FT.

19. PROPOSED DEPTH

3600

20. ROTARY OR CABLE TOOLS

Rotary

21. ELEVATIONS (Show whether DF, RT, GR, etc.)

3978 Gr. est.

22. APPROX. DATE WORK WILL START*

9-15-66

23.

PROPOSED CASING AND CEMENTING PROGRAM

SIZE OF HOLE	SIZE OF CASING	WEIGHT PER FOOT	SETTING DEPTH	QUANTITY OF CEMENT
11"	8 5/8"	24.0	400	300 sx
7 7/8"	4 1/2"	9.50	3600	250 sx

Tentative Well Program

Drill with native mud to 400'. Set surface casing and circulate cement to surface.
Drill with water and native mud to 3200'. Estimated T/San Andres @ 2378'.
Mud up @ 3200' w/9.0#/gal mud, 38 viscosity and 10 cc or less water loss.
Drill to TD of 3600' and run electric logs.
Run 4 1/2" casing and cement w/250 sx cement.
Release rotary and complete with well servicing unit.

RECEIVED
SEP 12 1966U. S. GEOLOGICAL SURVEY
ROSWELL, NEW MEXICO

IN ABOVE SPACE DESCRIBE PROPOSED PROGRAM: If proposal is to deepen or plug back, give data on present productive zone and proposed new productive zone. If proposal is to drill or deepen directionally, give pertinent data on subsurface locations and measured and true vertical depths. Give blowout preventer program, if any.

24.

SIGNED

D. Hoffacker

TITLE

Partner

DATE

9-8-66

(This space for Federal or State office use)

PERMIT NO.

APPROVAL DATE

APPROVED
CONDITIONS OF APPROVAL, IF ANY:

TITLE

DATE

SEP 12 1966
J. W. SUTHERLAND
DISTRICT ENGINEER

*See Instructions On Reverse Side

Instructions

General: This form is designed for submitting proposals to perform certain well operations, as indicated, on all types of lands and leases for appropriate action by either a Federal or a State agency, or both, pursuant to applicable Federal and/or State laws and regulations. Any necessary special instructions concerning the use of this form and the number of copies to be submitted, particularly with regard to local, area, or regional procedures and practices, either are shown below or will be issued by, or may be obtained from, the local Federal and/or State office.

Item 1: If the proposal is to redrill to the same reservoir at a different subsurface location or to a new reservoir, use this form with appropriate notations. Consult applicable State or Federal regulations concerning subsequent work proposals or reports on the well.

Item 4: If there are no applicable State requirements, locations on Federal or Indian land should be described in accordance with Federal requirements. Consult local State or Federal office for specific instructions.

Item 14: Needed only when location of well cannot readily be found by road from the land or lease description. A plat, or plats, separate or on this reverse side, showing the roads to, and the surveyed location of, the well, and any other required information, should be furnished when required by Federal or State agency offices.

Items 15 and 18: If well is to be, or has been directionally drilled, give distances for subsurface location of hole in any present or objective production zone.

Item 22: Consult applicable Federal or State regulations, or appropriate officials, concerning approval of the proposal before operations are started.

**NEW MEXICO OIL CONSERVATION COMMISSION
WELL LOCATION AND ACREAGE DEDICATION PLAT**

Form C-102
Supersedes C-128
Effective 1-1-65

All distances must be from the outer boundaries of the Section.

Operator Grover, MacCurdy, & Hoffacker			Lease Strange-Federal		Well No. 1
Unit Letter D	Section 24	Township 9 South	Range 29 East	County Chaves	
Actual Footage Location of Well: 660 feet from the north line and 660 feet from the west line					
Ground Level Elev. 3978	Producing Formation San Andres		Pool Wildcat	Dedicated Acreage: 40 Acres	

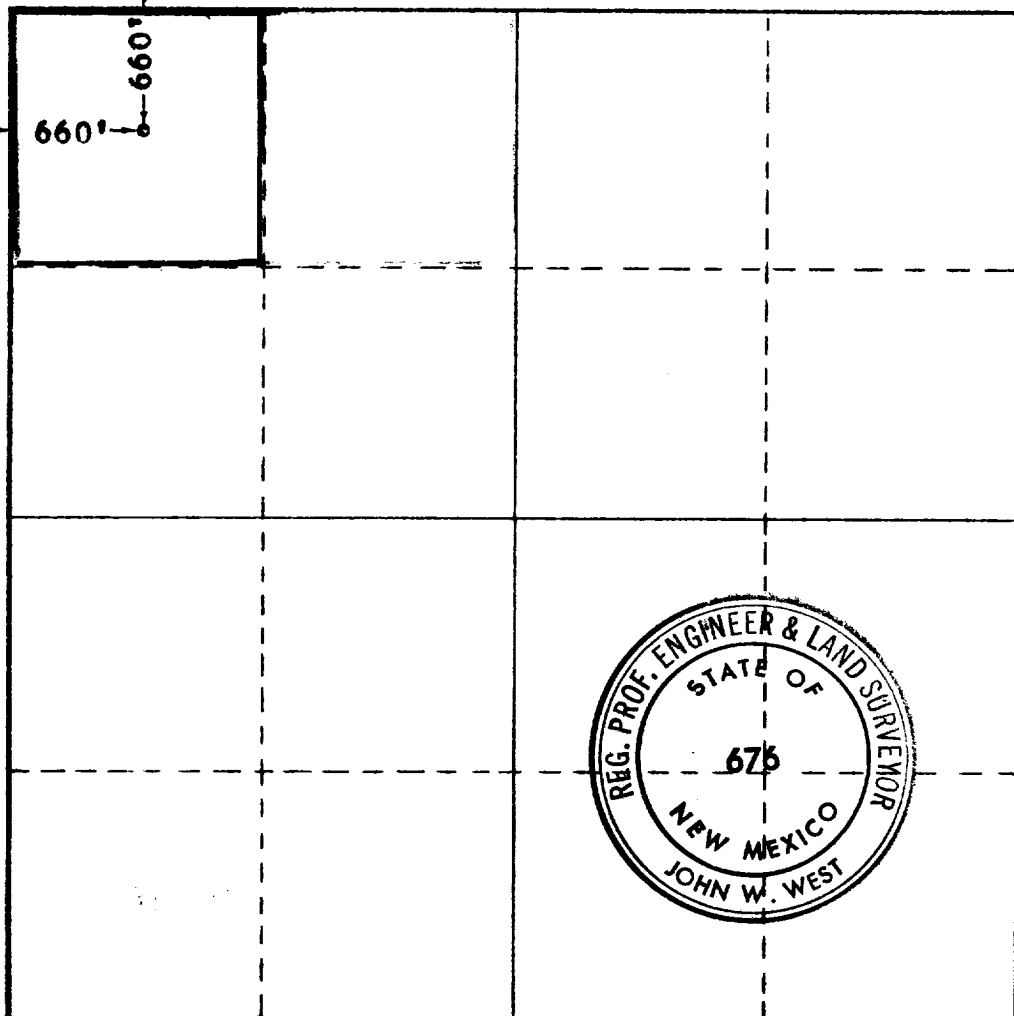
1. Outline the acreage dedicated to the subject well by colored pencil or hachure marks on the plat below.
2. If more than one lease is dedicated to the well, outline each and identify the ownership thereof (both as to working interest and royalty).
3. If more than one lease of different ownership is dedicated to the well, have the interests of all wells being consolidated by communitization, unitization, force-pooling, etc?

RECEIVED

☐ Yes ☐ No If answer is "yes," type of consolidation **SEP 19 1966**

If answer is "no," list the owners and tract descriptions which have actually been consolidated. (Use reverse side of this form if necessary.) **ARTESIA, OFFICE**

No allowable will be assigned to the well until all interests have been consolidated (by communitization, unitization, forced-pooling, or otherwise) or until a non-standard unit, eliminating such interests, has been approved by the Commission.



CERTIFICATION

I hereby certify that the information contained herein is true and complete to the best of my knowledge and belief.

Benjamin F. Hoffacker, Jr.
Name
Benjamin F. Hoffacker, Jr.

Position
Partner

Company **Grover, MacCurdy and Hoffacker**

Date
September 8, 1966

I hereby certify that the well location shown on this plat was plotted from field notes of actual surveys made by me or under my supervision, and that the same is true and correct to the best of my knowledge and belief.

Date Surveyed
August 27, 1966
Registered Professional Engineer and/or Land Surveyor

John W. West
Certificate No. **676**

0 320 640 960 1280 1600 1920 2240 2560 2880 3200 3520 3840 4160 4480 4800 5120 5440 5760 6080 6400