

**NEW MEXICO OIL CONSERVATION COMMISSION
WELL LOCATION AND ACREAGE DEDICATION PLAT**

Form C-102
Supersedes C-128
Effective 1-1-65

All distances must be from the outer boundaries of the Section.

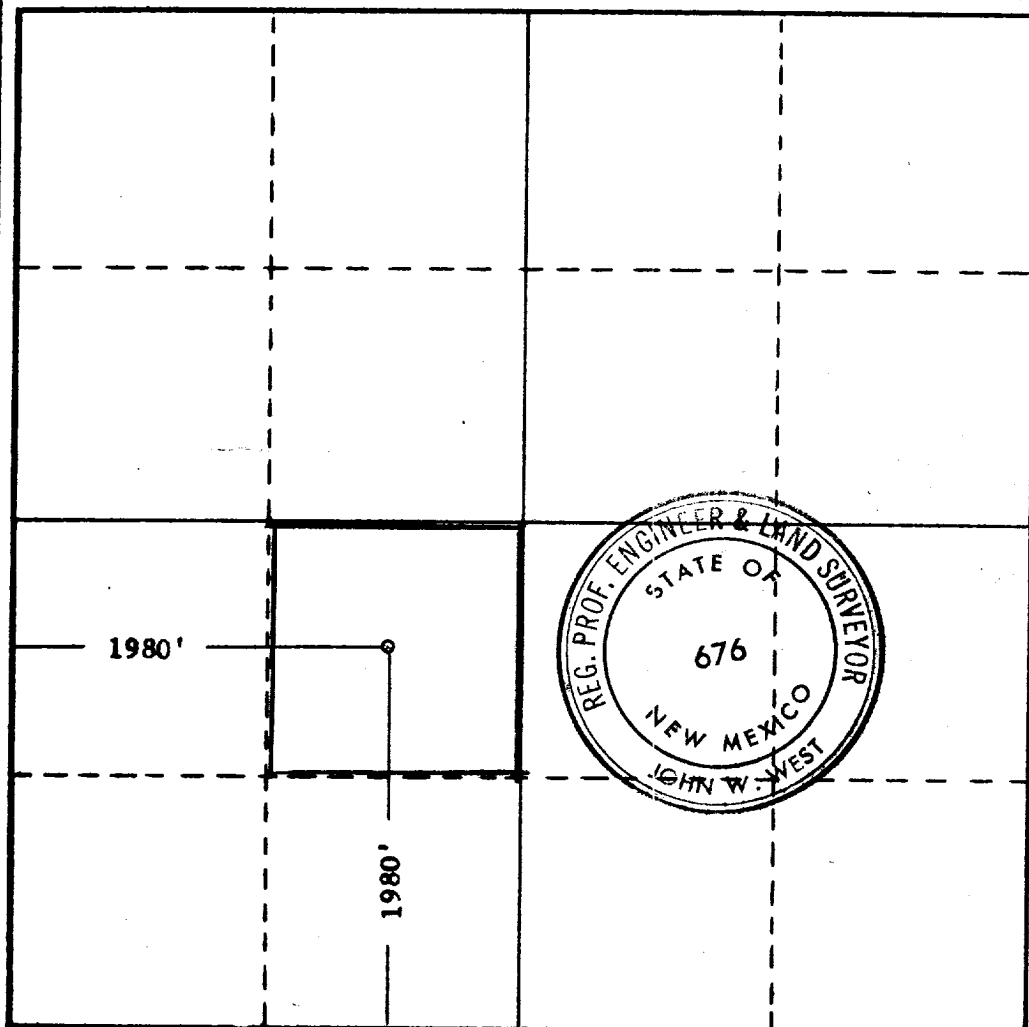
Operator UNION OIL COMPANY OF CALIFORNIA			Lease KITCHENS		Well No. 1
Unit Letter K	Section 6	Township 9 SOUTH	Range 26 EAST	County CHAVEZ	
Actual Footage Location of Well: <div style="display: flex; justify-content: space-between;"> 1980 feet from the SOUTH line and 1980 feet from the WEST line </div>					
Ground Level Elev.	Producing Formation Pre-Cambrian	Pool Wildcat	Dedicated Acreage: 40 Acres		

1. Outline the acreage dedicated to the subject well by colored pencil or hachure marks on the plat below.
2. If more than one lease is dedicated to the well, outline each and identify the ownership thereof (both as to working interest and royalty).
3. If more than one lease of different ownership is dedicated to the well, have the interests **RECEIVED** dated by communitization, unitization, force-pooling, etc?

☐ Yes ☐ No If answer is "yes," type of consolidation NOV 6 1967

If answer is "no," list the owners and tract descriptions which have actually been consolidated. (Use reverse side of this form if necessary?) ARTESIA, OFFICE

No allowable will be assigned to the well until all interests have been consolidated (by communitization, unitization, forced-pooling, or otherwise) or until a non-standard unit, eliminating such interests, has been approved by the Commission.



CERTIFICATION

I hereby certify that the information contained herein is true and complete to the best of my knowledge and belief.

Name R. L. Ladd
 Position District Drilling Supt.
 Company Union Oil Co. of California
 Date November 3, 1967

I hereby certify that the well location shown on this plat was plotted from field notes of actual surveys made by me or under my supervision, and that the same is true and correct to the best of my knowledge and belief.

Date Surveyed NOVEMBER 2, 1967
 Registered Professional Engineer and/or Land Surveyor
John W. West
 Certificate No. 676

