

NF MEXICO OIL CONSERVATION COMMISSION
WELL LOCATION AND ACREAGE DEDICATION, LAT

Form C-102
Supersedes C-128
Effective 1-1-65

All distances must be from the outer boundaries of the Section.

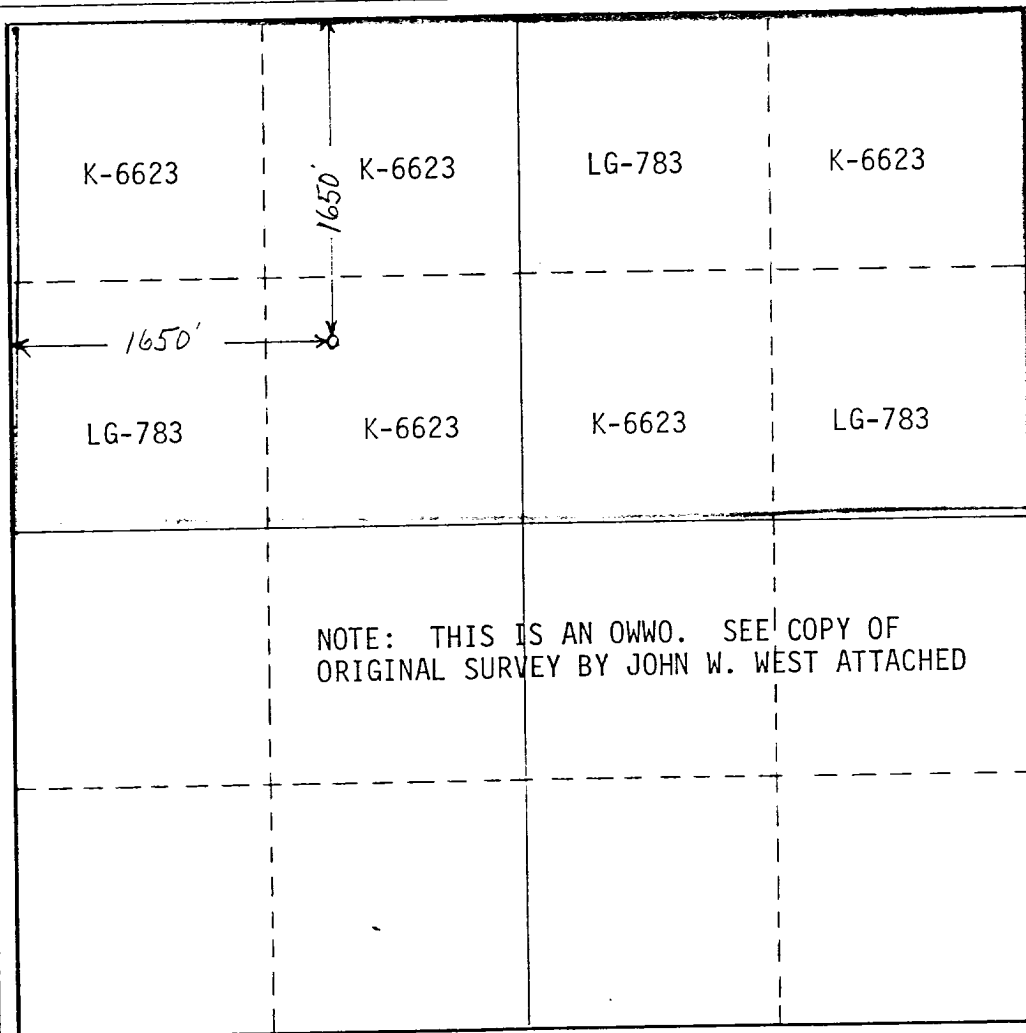
Operator Mountain States Petroleum Corporation			Lease Hondo State		Well No. 1
Unit Letter F	Section 36	Township 14S	Range 27E	County Chaves	
Actual Footage Location of Well: <div style="display: flex; justify-content: space-between;"> 1650 feet from the North line and 1650 feet from the West line </div>					
Ground Level Elev. 3470.5	Producing Formation Atoka-Morrow	Pool Undesignated		Dedicated Acreage: 320 Acres	

1. Outline the acreage dedicated to the subject well by colored pencil or hachure marks on the plat below.
2. If more than one lease is dedicated to the well, outline each and identify the ownership thereof (both as to working interest and royalty).
3. If more than one lease of different ownership is dedicated to the well, have the interests of all owners been consolidated by communitization, unitization, force-pooling, etc?

☒ Yes ☐ No If answer is "yes," type of consolidation Communitization if commercial

If answer is "no," list the owners and tract descriptions which have actually been consolidated. (Use reverse side of this form if necessary.) _____

No allowable will be assigned to the well until all interests have been consolidated (by communitization, unitization, forced-pooling, or otherwise) or until a non-standard unit, eliminating such interests, has been approved by the Commission.



CERTIFICATION

I hereby certify that the information contained herein is true and complete to the best of my knowledge and belief.

Kay C. Havenor
Name

Kay C. Havenor

Position
Agent

Company
Mountain States Pet. Corp.

Date
Dec. 29, 1976

I hereby certify that the well location shown on this plat was plotted from field notes of actual surveys made by me or under my supervision, and that the same is true and correct to the best of my knowledge and belief.

October 22, 1968

Date Surveyed
John W. West

Registered Professional Engineer
and/or Land Surveyor

676

Certificate No.

