

N MEXICO OIL CONSERVATION COMMISS
WELL LOCATION AND ACREAGE DEDICATION PLAT

Form C-102
 Supersedes C-128
 Effective 1-1-65

All distances must be from the outer boundaries of the Section.

Operator MAR-WIN DEVELOPMENT CO.			Lease MERRITT STATE		Well No. 1
Unit Letter K	Section 22	Township 12 SOUTH	Range 27 EAST	County CHAVES	
Actual Footage Location of Well: 1970 feet from the SOUTH line and 1968.7 feet from the WEST line					
Ground Level Elev. 3563	Producing Formation San andres Test		Pool Wildcat		Dedicated Acreage: 40 Acres

1. Outline the acreage dedicated to the subject well by colored pencil or hachure marks on the plat below.
2. If more than one lease is dedicated to the well, outline each and identify the ownership thereof (both as to working interest and royalty).
3. If more than one lease of different ownership is dedicated to the well, have the interests of all owners been consolidated by communitization, unitization, force-pooling, etc?

RECEIVED

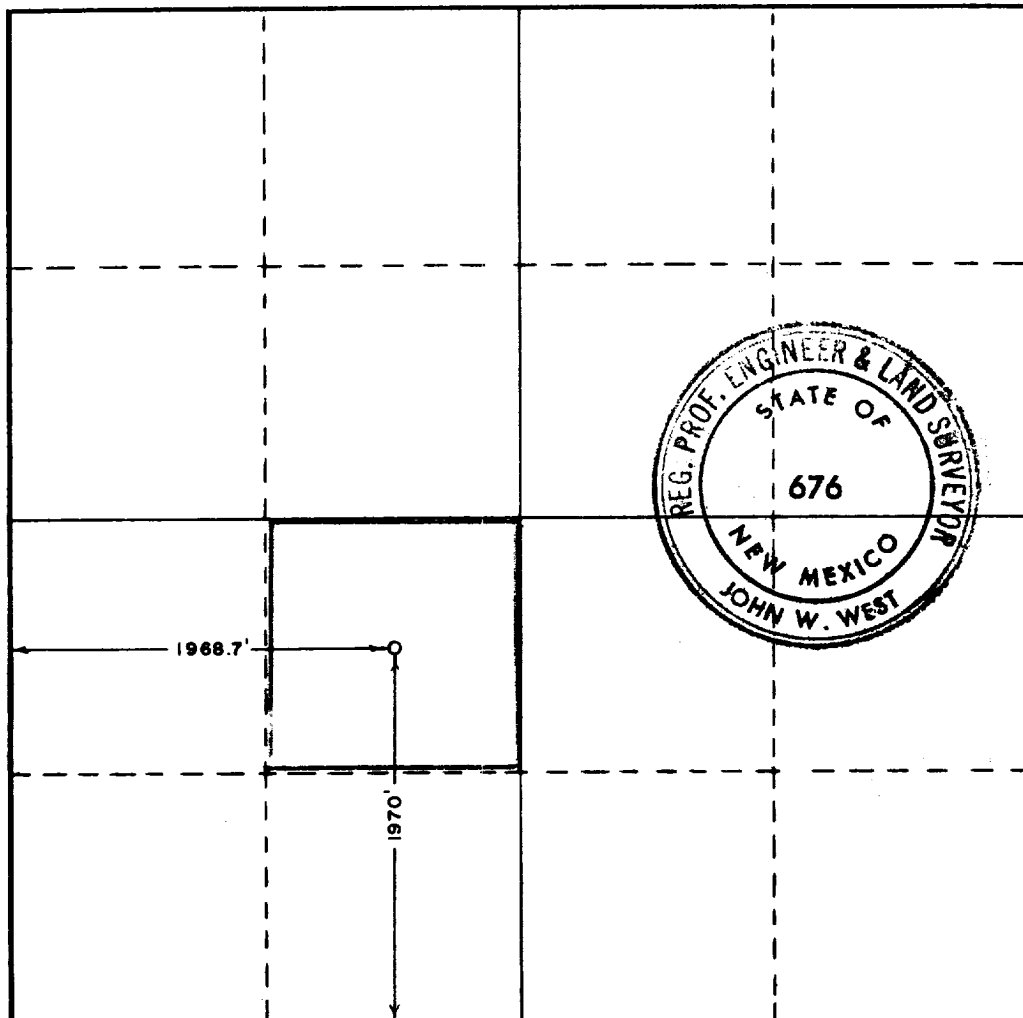
MAY 18 1970

☐ Yes ☐ No If answer is "yes," type of consolidation _____

D.C.C.
ARTESIA, OFFICE

If answer is "no," list the owners and tract descriptions which have actually been consolidated. (Use reverse side of this form if necessary.) _____

No allowable will be assigned to the well until all interests have been consolidated (by communitization, unitization, forced-pooling, or otherwise) or until a non-standard unit, eliminating such interests, has been approved by the Commission.



CERTIFICATION

I hereby certify that the information contained herein is true and complete to the best of my knowledge and belief.

Name Samuel H. Marshall
 Position **President**

Company
Mar-Win Development Co.

Date
May 15, 1970

I hereby certify that the well location shown on this plat was plotted from field notes of actual surveys made by me or under my supervision, and that the same is true and correct to the best of my knowledge and belief.

Date Surveyed
MAY 14, 1970

Registered Professional Engineer and/or Land Surveyor

John W West
 Certificate No. **676**

