

N. M. O. C. C.

SUBMIT IN TRIPLICATE*
(Other instructions on
reverse side)Form approved.
Budget Bureau No. 42-R1425.Form 9-331 C
(May 1963)UNITED STATES
DEPARTMENT OF THE INTERIOR
GEOLOGICAL SURVEY

PERMIT TO DRILL, DEEPEN, OR PLUG BACK

DEEPEN ☒PLUG BACK ☐SINGLE
ZONE ☒MULTIPLE
ZONE ☐

APPLICANT

1a. TYPE OF

Oil Corporation

OPERATOR

Commerce Building - Fort Worth, Texas 76102

LOCATION OF WELL (Report location clearly and in accordance with any State requirements.*)

2130' FNL & 660' FWL of Section 5-T7S-R27E

At proposed prod. zone

same as above

14. DISTANCE IN MILES AND DIRECTION FROM NEAREST TOWN OR POST OFFICE*

approximately 18 miles NE of Roswell

15. DISTANCE FROM PROPOSED*

LOCATION TO NEAREST
PROPERTY OR LEASE LINE, FT.
(Also to nearest drlg. unit line, if any)

510'

16. NO. OF ACRES IN LEASE

439.11

17. NO. OF ACRES ASSIGNED
TO THIS WELL

40

18. DISTANCE FROM PROPOSED LOCATION*
TO NEAREST WELL, DRILLING, COMPLETED,
OR APPLIED FOR, ON THIS LEASE, FT.

NA

19. PROPOSED DEPTH

1700 (Slaughter)

20. ROTARY OR CABLE TOOLS

Cable tools

22. APPROX. DATE WORK WILL START*

10-30-70

21. ELEVATIONS (Show whether DF, RT, GR, etc.)

4200' GR (est.)

23.

PROPOSED CASING AND CEMENTING PROGRAM

SIZE OF HOLE	SIZE OF CASING	WEIGHT PER FOOT	SETTING DEPTH	QUANTITY OF CEMENT
24	20	65	20'	circ to surface
15 1/2	13 3/8	48	80	circ to surface
11	8 5/8	24	1700	ample amount to bring top of cement to approx 1200' from surface.

It is planned to set a minimum of 20' of 20" conductor pipe and cement with ready-mix to surface; then to drill to 80' or deeper if necessary, to protect fresh water sands, run 13 3/8" casing, and circulate cement to the surface; then drill to 1700' to test the Slaughter Zone of the San Andres Formation and run 8 5/8" casing and run sufficient cement to bring top of cement to approximately 1200'. Should additional water or other hole problems be encountered while drilling below the setting depth of the 13 3/8" casing, it may be necessary to run 10 3/4" casing and mud into complete the hole.

RECEIVED

OCT 30 1970

O. C. C.
ARTESIA, OFFICE

RECEIVED

OCT 29 1970

IN ABOVE SPACE DESCRIBE PROPOSED PROGRAM: If proposal is to deepen or plug back, give data on present productive zone and proposed new productive zone. If proposal is to drill or deepen directionally, give pertinent data on subsurface locations and measured and true vertical depths. Give blowout preventer program, if any.

24.

SIGNED

R. L. Nabbefeld

TITLE

Manager, Primary Operations

DATE October 27, 1970

PERMIT NO.

APPROVED

R. L. BEEKMA

THIS APPROVAL IS RESCINDED IF OPERATIONS
ARE NOT COMMENCED WITHIN 3 MONTHS.
EXPIRES JAN 29 1971

See Instructions On Reverse Side

Instructions

General: This form is designed for submitting proposals to perform certain well operations, as indicated, on all types of lands and leases for appropriate action by either a Federal or a State agency, or both, pursuant to applicable Federal and/or State laws and regulations. Any necessary special instructions concerning the use of this form and the number of copies to be submitted, particularly with regard to local, area, or regional procedures and practices, either are shown below or will be issued by, or may be obtained from, the local Federal and/or State office.

Item 1: If the proposal is to redrill to the same reservoir at a different subsurface location or to a new reservoir, use this form with appropriate notations. Consult applicable State or Federal regulations concerning subsequent work proposals or reports on the well.

Item 4: If there are no applicable State requirements, locations on Federal or Indian land should be described in accordance with Federal requirements. Consult local State or Federal office for specific instructions.

Item 14: Needed only when location of well cannot readily be found by road from the land or lease description. A plat, or plat, separate or on this reverse side, showing the roads to, and the surveyed location of, the well, and any other required information, should be furnished when required by Federal or State agency offices.

Items 15 and 18: If well is to be, or has been directionally drilled, give distances for subsurface location of hole in any present or objective production zone.

Item 22: Consult applicable Federal or State regulations, or appropriate officials, concerning approval of the proposal before operations are started.

Form C-102
Supersedes C-128
Effective 1-1-65

All distances must be from the outer boundaries of the Section.

Operator SHENANDOAH OIL CORP.		Lease <i>Shenandoah Federal</i> FED. J		Well No. 1
Unit Letter E	Section 5	Township 7 SOUTH	Range 27 EAST	County CHAVES
Actual Footage Location of Well: 2130 feet from the NORTH line and 660 feet from the WEST line				
Ground Level Elev. 3905	Producing Formation Salt Andros (Slaughter)	Pool <i>Wildcat</i> Undesignated	Dedicated Acreage: 40 Acres	

1. Outline the acreage dedicated to the subject well by colored pencil or hachure marks on the plat below.
2. If more than one lease is dedicated to the well, outline each and identify the ownership thereof (both as to working interest and royalty).
3. If more than one lease of different ownership is dedicated to the well, have the interests of all owners been consolidated by communitization, unitization, force-pooling, etc?

☐ Yes ☐ No If answer is "yes," type of consolidation _____

If answer is "no," list the owners and tract descriptions which have actually been consolidated. (Use reverse side of this form if necessary.) _____

No allowable will be assigned to the well until all interests have been consolidated (by communitization, unitization, forced-pooling, or otherwise) or until a non-standard unit, eliminating such interests, has been approved by the Commission.

2130'

660'

RECEIVED

NOV 9 1970

D. C. C.
ARTESIA, OFFICE

REG. PROF. ENGINEER & LAND SURVEYOR
STATE OF
676
NEW MEXICO
JOHN W. WEST

CERTIFICATION

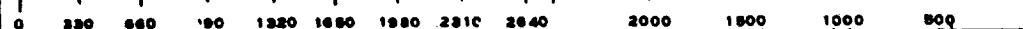
I hereby certify that the information contained herein is true and complete to the best of my knowledge and belief.

Name	R. L. Nabbefeld
Position	Manager, Primary Operations
Company	Shenandoah Oil Corporation
Date	November 2, 1970

I hereby certify that the well location shown on this plat was plotted from field notes of actual survey made on the ground under the supervision of the undersigned and that the same is true and correct to the best of my knowledge and belief.

Date Surveyed
10-25-1970
Registered Professional Engineer
and/or Land Surveyor

Certificate No. 676



NEW MEXICO OIL CONSERVATION COMMISSION
WELL LOCATION AND ACREAGE DEDICATION PLAT

Form C-102
Supersedes C-128
Effective 1-1-65

All distances must be from the outer boundaries of the Section.

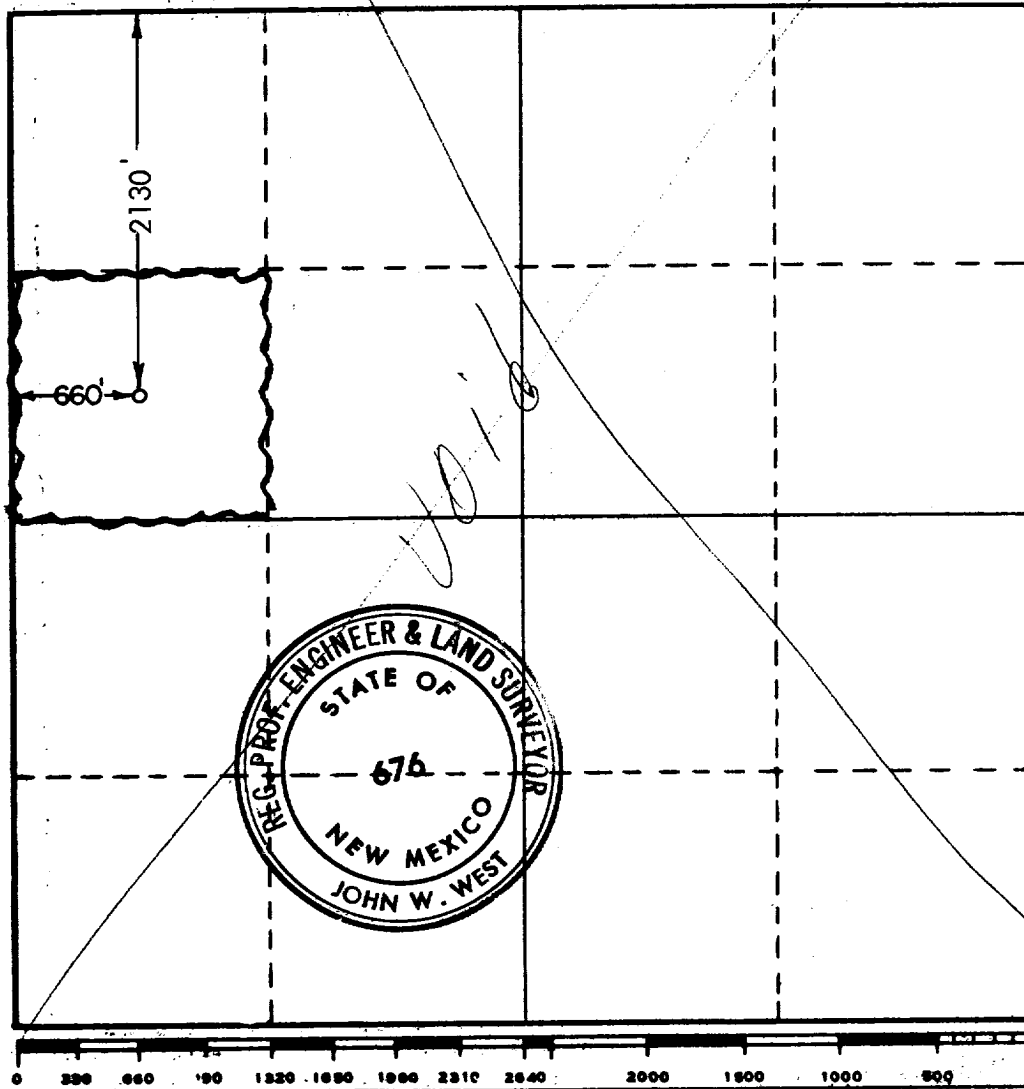
Operator SHENANDOAH OIL CORP.		Lease <i>Shenandoah Federal</i> FEDERAL		Well No. 1
Unit Letter E	Section 5	Township 7 SOUTH	Range 27 EAST	County CHAVES
Actual Footage Location of Well: 1980 feet from the NORTH line and 660 feet from the WEST line				
Ground Level Elev. 4200 gr (est)	Producing Formation San Andres (Slaughter)	Pool Undesignated	Dedicated Acreage: 40 Acres	

1. Outline the acreage dedicated to the subject well by colored pencil or hachure marks on the plat below.
2. If more than one lease is dedicated to the well, outline each and identify the ownership thereof (both as to working interest and royalty).
3. If more than one lease of different ownership is dedicated to the well, have the interests of all owners been consolidated by communitization, unitization, force-pooling, etc?

☐ Yes ☐ No If answer is "yes," type of consolidation _____

If answer is "no," list the owners and tract descriptions which have actually been consolidated. (Use reverse side of this form if necessary.) _____

No allowable will be assigned to the well until all interests have been consolidated (by communitization, unitization, forced-pooling, or otherwise) or until a non-standard unit, eliminating such interests, has been approved by the Commission.



CERTIFICATION

I hereby certify that the information contained herein is true and complete to the best of my knowledge and belief.

Name
R. L. Nobbyfield
Position
Manager, Primary Operations
Company
Shenandoah Oil Corporation
Date
October 27, 1970

RECEIVED
OCT 29 1970
I hereby certify that the information shown on this plat is plotted from field notes of actual surveys made by me or under my supervision, and that the same is true and correct to the best of my knowledge and belief.

Date Surveyed
OCTOBER 24, 1970
Registered Professional Engineer and/or Land Surveyor

John W. West
Certificate No. **676**