

NO. OF COPIES RECEIVED	5
DISTRIBUTION	
SANTA FE	/
FILE	/
U.S.G.S.	2
LAND OFFICE	/
OPERATOR	/

NEW MEXICO OIL CONSERVATION COMMISSION

FEB 22 1971

O. C. C.

ARTESIA, OFFICE

Form C-101
Revised 1-1-65

5A. Indicate Type of Lease	
STATE <input type="checkbox"/>	FEE <input checked="" type="checkbox"/>
5. State Oil & Gas Lease No.	

APPLICATION FOR PERMIT TO DRILL, DEEPEN, OR PLUG BACK

1a. Type of Work		7. Unit Agreement Name	
b. Type of Well DRILL <input checked="" type="checkbox"/> DEEPEN <input type="checkbox"/> PLUG BACK <input type="checkbox"/>		8. Farm or Lease Name O'Brien "24"	
c. Name of Operator American Trading & Production Corporation		9. Well No. 1	
3. Address of Operator c/o Oil Reports & Gas Services, Inc., Box 763, Hobbs, N. M. 88240		10. Field and Pool, or Wildcat Wildcat	
4. Location of Well UNIT LETTER J LOCATED 1980 FEET FROM THE South LINE		12. County Chaves	
AND 1980 FEET FROM THE East LINE OF SEC. 24 TWP. 8 S RGE. 28 E NMPM			
19. Proposed Depth 3000'		19A. Formation San Andres	
20. Rotary or C.T. Rotary			
21. Elevations (Show whether DF, RT, etc.) 3989 GR		21A. Kind & Status Plug. Bond Blanket	
21B. Drilling Contractor Not Let		22. Approx. Date Work will start 2/25/71	

23.

PROPOSED CASING AND CEMENT PROGRAM

SIZE OF HOLE	SIZE OF CASING	WEIGHT PER FOOT	SETTING DEPTH	SACKS OF CEMENT	EST. TOP
12 1/4	8 5/8	24#	350	250	Circ
7 5/8	4 1/2	9.5#	3000	300	2000

IN ABOVE SPACE DESCRIBE PROPOSED PROGRAM; IF PROPOSAL IS TO DEEPEN OR PLUG BACK, GIVE DATA ON PRESENT PRODUCTIVE ZONE AND PROPOSED NEW PRODUCTIVE ZONE. GIVE BLOWOUT PREVENTER PROGRAM, IF ANY.

I hereby certify that the information above is true and complete to the best of my knowledge and belief.

Signed H. L. Smith Title Agent Date 2/19/71

(This space for State Use)

APPROVED BY W. A. Gressett TITLE OIL AND GAS INSPECTOR DATE FEB 22 1971

CONDITIONS OF APPROVAL, IF ANY:

APPROVAL VALID
FOR 90 DAYS UNLESS
DRILLING COMMENCED,
EXPIRES 5-23-71

**N. MEXICO OIL CONSERVATION COMMISSION
WELL LOCATION AND ACREAGE DEDICATION PLAT**

Form C-102
Supersedes C-128
Effective 1-1-65

All distances must be from the outer boundaries of the Section.

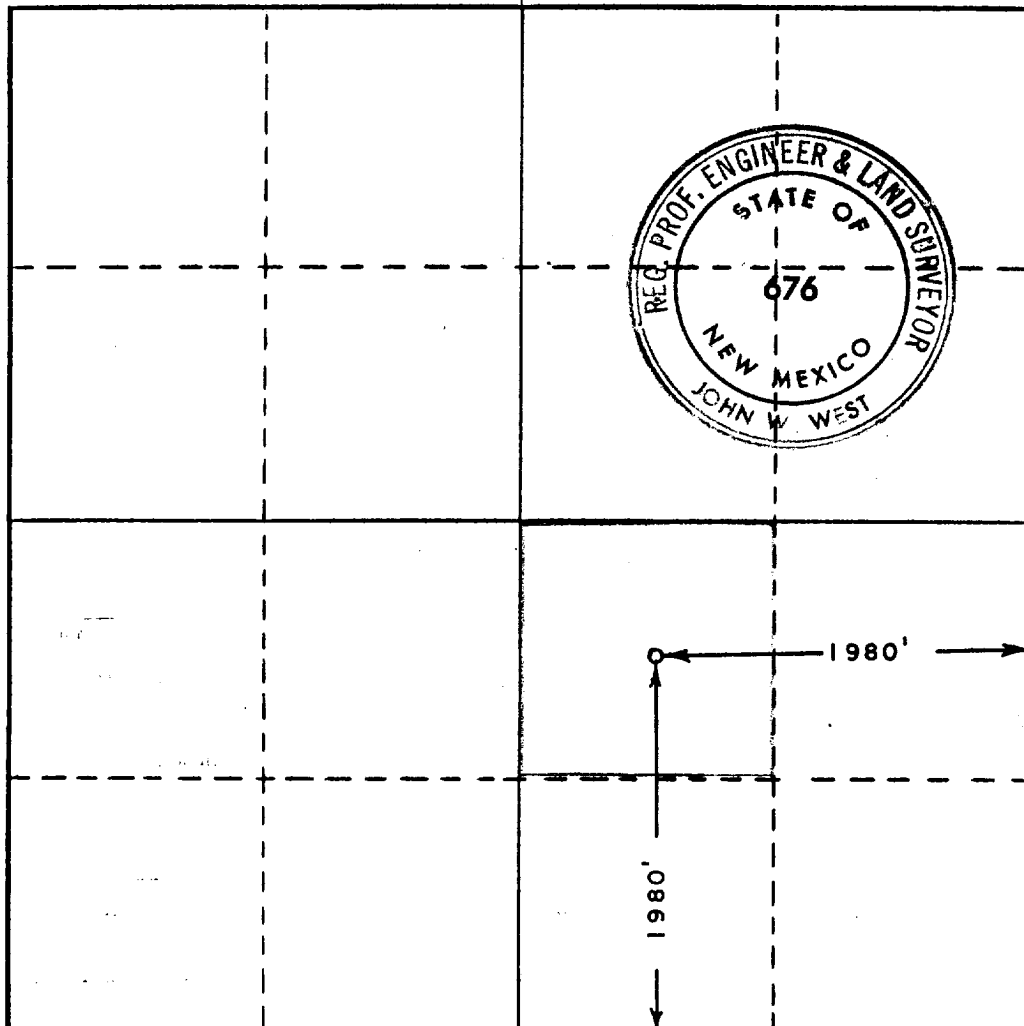
Operator AMERICAN TRADING & PRODUCTION CORP.			Lease O'BRIEN 24		Well No. 1
Unit Letter J	Section 24	Township 8 SOUTH	Range 28 EAST	County CHAVES	
Actual Footage Location of Well:					
1980 feet from the SOUTH line and		1980 feet from the EAST line			
Ground Level Elev. 3989.8	Producing Formation San Andres	Pool Wildcat	Dedicated Acreage: 40 Acres		

1. Outline the acreage dedicated to the subject well by colored pencil or hachure marks on the plat below.
2. If more than one lease is dedicated to the well, outline each and identify the ownership thereof (both as to working interest and royalty).
3. If more than one lease of different ownership is dedicated to the well, have the interests of all owners been consolidated by communitization, unitization, force-pooling, etc?

☐ Yes ☐ No If answer is "yes," type of consolidation _____

If answer is "no," list the owners and tract descriptions which have actually been consolidated. (Use reverse side of this form if necessary.) _____

No allowable will be assigned to the well until all interests have been consolidated (by communitization, unitization, forced-pooling, or otherwise) or until a non-standard unit, eliminating such interests, has been approved by the Commission.



CERTIFICATION

I hereby certify that the information contained herein is true and complete to the best of my knowledge and belief.

Name **H. L. Smith**
 Position _____
 Agent _____
 Company **American Trading & Production Corp.**
 Date **2/19/71**

I hereby certify that the well location shown on this plat was plotted from field notes of actual surveys made by me or under my supervision, and that the same is true and correct to the best of my knowledge and belief.

Date Surveyed
FEBRUARY 18, 1971
 Registered Professional Engineer
 and/or Land Surveyor

John W. West
 Certificate No. **676**

