

N. M. O. C. C. C.
UNITED STATES
DEPARTMENT OF THE INTERIOR
GEOLOGICAL SURVEY

PERMIT IN TRIP GATE*
(Other instruct on reverse side)

Form approved.
Budget Bureau No. 42-R1425.

30-005-60179
5. LEASE DESIGNATION AND SERIAL NO.
NM 0154766

APPLICATION FOR PERMIT TO DRILL, DEEPEN, OR PLUG BACK

1a. TYPE OF WORK

DRILL ☒

DEEPEN ☐

PLUG BACK ☐

b. TYPE OF WELL

OIL WELL ☒

GAS WELL ☐

OTHER ☐

SINGLE ZONE ☐

MULTIPLE ZONE ☐

2. NAME OF OPERATOR

JACK L. McCLELLAN

3. ADDRESS OF OPERATOR

Box 848, ROSWELL, NEW MEXICO 88201

4. LOCATION OF WELL (Report location clearly and in accordance with any State requirements.)

At surface

1980' FNL & 660' FWL

At proposed prod. zone

RECEIVED

JUN 8 1971

N. M. O. C. C. C.

ARTESIA, OFFICE

14. DISTANCE IN MILES AND DIRECTION FROM NEAREST TOWN OR POST OFFICE*

30 MILES NORTHEAST OF ROSWELL, N.M.

16. DISTANCE FROM PROPOSED*

LOCATION TO NEAREST PROPERTY OR LEASE LINE, FT. (Also to nearest drlg. unit line, if any)

660'

17. NO. OF ACRES IN LEASE

563.60

18. NO. OF ACRES ASSIGNED TO THIS WELL

40

18. DISTANCE FROM PROPOSED LOCATION* TO NEAREST WELL, DRILLING, COMPLETED, OR APPLIED FOR, ON THIS LEASE, FT.

4800'

19. PROPOSED DEPTH

6500' DEVONIAN

20. ROTARY OR CABLE TOOLS

ROTARY

21. ELEVATIONS (Show whether DF, RT, GR, etc.)

4109' G. L.

22. APPROX. DATE WORK WILL START*

JUNE 25, 1971

PROPOSED CASING AND CEMENTING PROGRAM

SIZE OF HOLE	SIZE OF CASING	WEIGHT PER FOOT	SETTING DEPTH	QUANTITY OF CEMENT
17 1/2"	13 3/8"	48 LB.	30'	4 YARDS
11"	8 5/8"	29-32 LB.	1400'	750 SX.
7 7/8"	5 1/2"	15-20 LB.	6500'	350 SX.

WILL DRILL TO APPROXIMATELY 6500' TO TEST THE DEVONIAN FORMATION. ALL ZONES HAVING A SHOW OF OIL OR GAS ENCOUNTERED IN THE DRILLING OF THIS TEST WILL BE TESTED, AND A COMPLETION ATTEMPT MADE IF WARRENTED.

MORAN DRILLING COMPANY WILL BE THE CONTRACTOR. THE WELL WILL BE COMMENCED ON APPROXIMATELY JUNE 25, 1971.

RECEIVED

JUN 2 1971

U. S. GEOLOGICAL SURV
ARTESIA, NEW MEXICO

IN ABOVE SPACE DESCRIBE PROPOSED PROGRAM: If proposal is to deepen or plug back, give data on present productive zone and proposed new productive zone. If proposal is to drill or deepen directionally, give pertinent data on subsurface locations and measured and true vertical depths. Give blowout preventer program, if any.

24.

SIGNED

J. L. McClellan

TITLE

OPERATOR

DATE

MAY 25, 1971

(This space for Federal or State office use)

PERMIT NO.

APPROVED BY
CONDITIONS OF APPROVAL, IF ANY:

APPROVED
JUN - 2 1971
R. L. DECKMAN
ACTING DISTRICT ENGINEER

THIS APPROVAL IS VALID IF OPERATIONS ARE NOT COMMENCED WITHIN 3 MONTHS
SEP - 7 1971
*See Instructions On Reverse Side

NEW MEXICO OIL CONSERVATION COMMISSION
WELL LOCATION AND ACREAGE DEDICATION PLAT

Form C-102
Supersedes C-128
Effective 1-1-65

All distances must be from the outer boundaries of the Section.

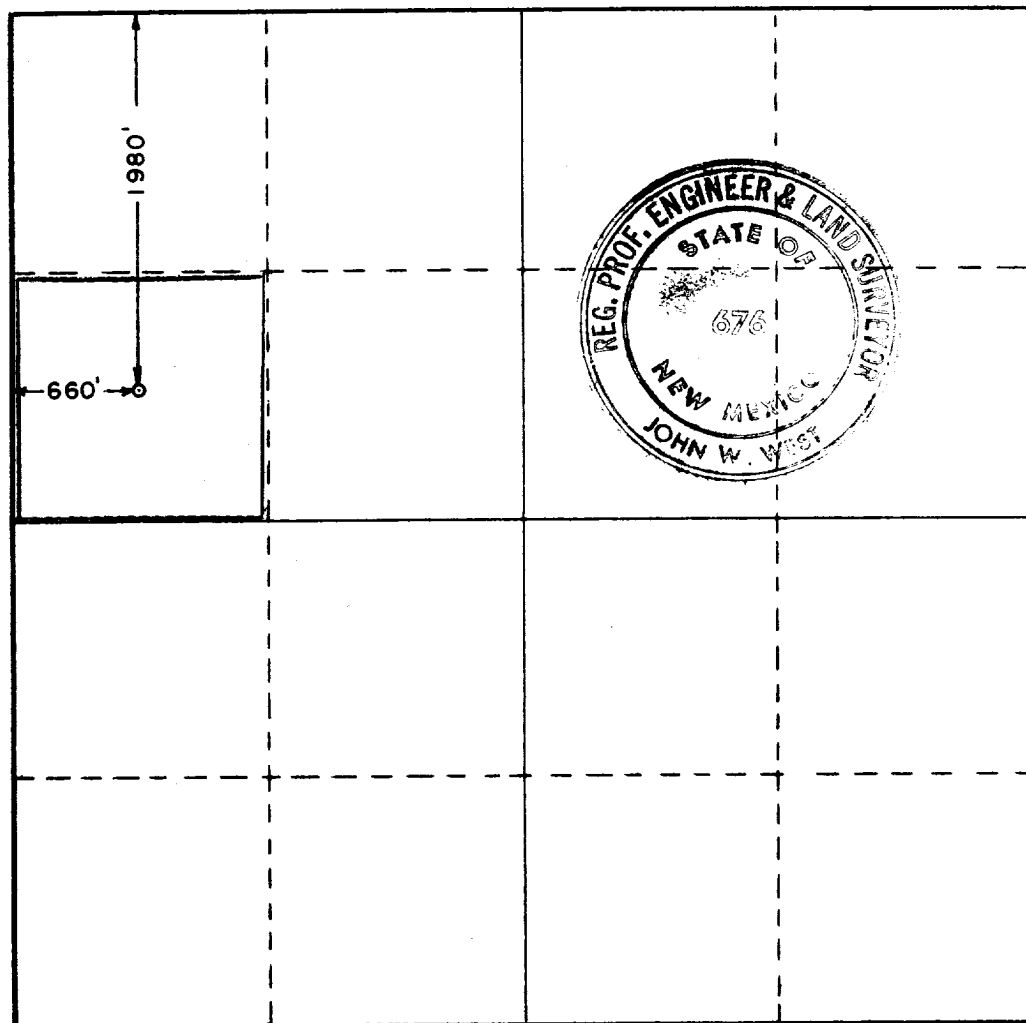
Operator JACK L. McCLELLAN			Lease BAR Federal		Well No. 1
Unit Letter E	Section 15	Township 6 SOUTH	Range 27 EAST	County CHAVES	
Actual Footage Location of Well: 1980 feet from the NORTH line and 660 feet from the WEST line					
Ground Level Elev. 4109	Producing Formation DEVONIAN		Pool WILDCAT	Dedicated Acreage: 40 Acres	

1. Outline the acreage dedicated to the subject well by colored pencil or hatchure marks on the plat below.
2. If more than one lease is dedicated to the well, outline each and identify the ownership thereof (both as to working interest and royalty).
3. If more than one lease of different ownership is dedicated to the well, have the interests of all owners been consolidated by communitization, unitization, force-pooling, etc?

☐ Yes ☐ No If answer is "yes," type of consolidation _____

If answer is "no," list the owners and tract descriptions which have actually been consolidated. (Use reverse side of this form if necessary.) _____

No allowable will be assigned to the well until all interests have been consolidated (by communitization, unitization, forced-pooling, or otherwise) or until a non-standard unit, eliminating such interests, has been approved by the Commission.



CERTIFICATION

I hereby certify that the information contained herein is true and complete to the best of my knowledge and belief.

Jack L. McClellan
Name
JACK L. McCLELLAN
Position
OPERATOR

Company
JACK L. McCLELLAN

Date
JUNE 1, 1971

I hereby certify that the well location shown on this plat was plotted from notes of actual survey made by me or under my supervision, and that the same is true and correct to the best of my knowledge and belief.

RECEIVED
JUN 3 1971
U.S. GEOLOGICAL SURVEY
ARTESIA, NEW MEXICO

Date Surveyed
MAY 26, 1971

Registered Professional Engineer and/or Land Surveyor

John W. West
Certificate No. **676**

