

NEW MEXICO OIL CONSERVATION COMMISSION
WELL LOCATION AND ACREAGE DEDICATION PLAT

Form C-102
Supersedes C-128
Effective 1-1-65

All distances must be from the outer boundaries of the Section.

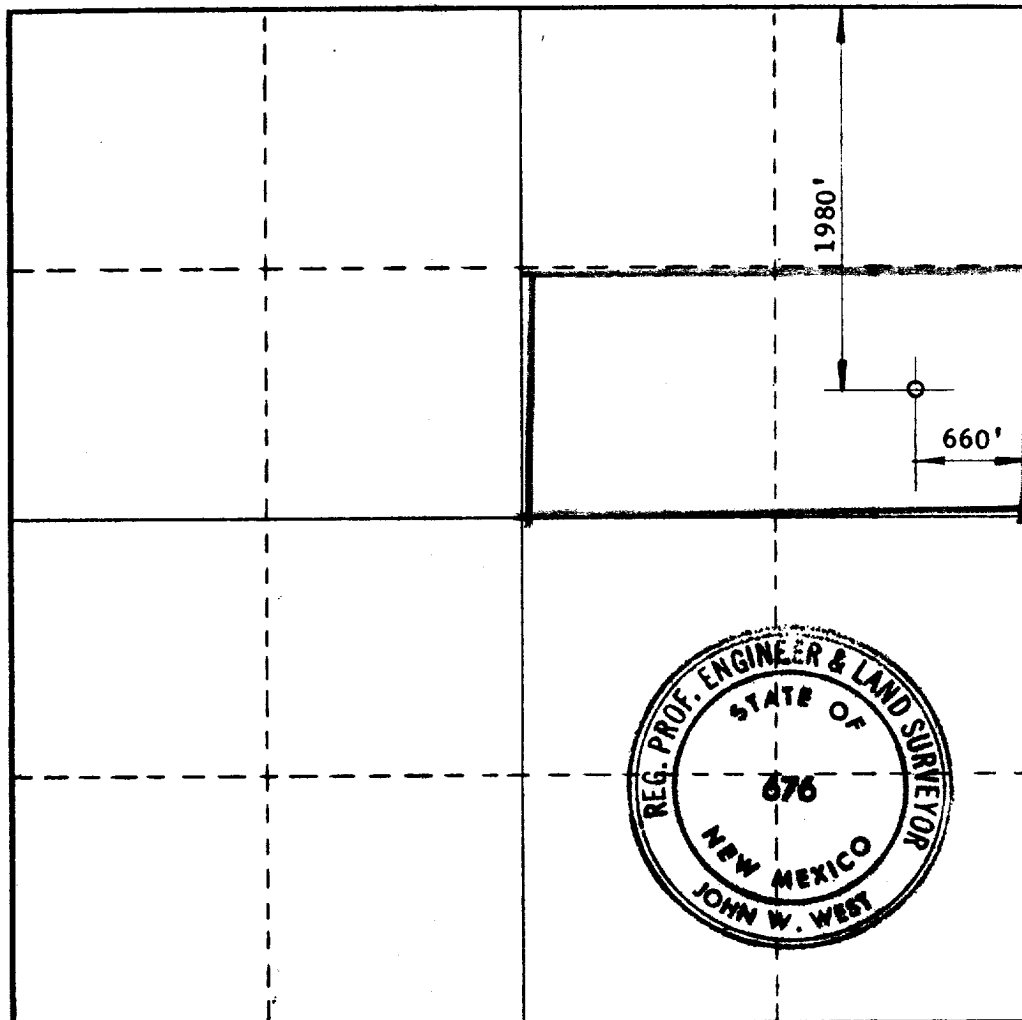
Operator BLACKROCK OIL COMPANY			Lease BATES MCINTYRE FEDERAL		Well No. 1
Unit Letter H	Section 9	Township 6 SOUTH	Range 27 EAST	County CHAVES	
Actual Footage Location of Well: 1980 feet from the NORTH line and 660 feet from the EAST line					
Ground Level Elev. 3973.20	Producing Formation Devonian	Pool <i>Haystack Silvers Dev</i> Undesignated	Dedicated Acreage: 80 Acres		

1. Outline the acreage dedicated to the subject well by colored pencil or hachure marks on the plat below.
2. If more than one lease is dedicated to the well, outline each and identify the ownership thereof (both as to working interest and royalty).
3. If more than one lease of different ownership is dedicated to the well, have the interests of all owners been consolidated by communitization, unitization, force-pooling, etc?

☐ Yes ☐ No If answer is "yes," type of consolidation _____

If answer is "no," list the owners and tract descriptions which have actually been consolidated. (Use reverse side of this form if necessary.) _____

No allowable will be assigned to the well until all interests have been consolidated (by communitization, unitization, forced-pooling, or otherwise) or until a non-standard unit, eliminating such interests, has been approved by the Commission.



CERTIFICATION

I hereby certify that the information contained herein is true and complete to the best of my knowledge and belief.

Name *O. D. Butler*
O. D. Butler
Position
President
Company
BLACKROCK OIL COMPANY
Date
November 3, 1971

I hereby certify that the well location shown on this plat was located by notes of actual surveys made by me or under my supervision, and the same is true and correct to the best of my knowledge and belief.

RECEIVED
NOV 8 1971
U.S. GEOLOGICAL SURVEY
ARTESIA, NEW MEXICO

Date Surveyed
10-30-71
Registered Professional Engineer and/or Land Surveyor

John W. West
Certificate No. **676**

