

Artesia, NM 88210
UNITED STATES
DEPARTMENT OF THE INTERIOR
GEOLOGICAL SURVEY(Other instructions on
reverse side)

30-005-60203

5. LEASE DESIGNATION AND SERIAL NO.

NM-18970

6. IF INDIAN, ALLOTTEE OR TRIBE NAME

7. UNIT AGREEMENT NAME

8. FARM OR LEASE NAME

West Haystack Federal

9. WELL NO.

10. FIELD AND POOL, OR WILDCAT

Wildcat

11. SEC., T., R., M., OR BLK.
AND SURVEY OR AREA

Sec. 30-T6S-R27E

12. COUNTY OR PARISH 13. STATE

Chaves

New Mexico

APPLICATION FOR PERMIT TO DRILL, DEEPEN, OR PLUG BACK

1a. TYPE OF WORK

DRILL ☒ Re-entryDEEPEN ☐PLUG BACK ☐

b. TYPE OF WELL

OIL
WELL ☐GAS
WELL ☒

OTHER

SINGLE
ZONE ☐MULTIPLE
ZONE ☐

2. NAME OF OPERATOR

Read & Stevens, Inc

JUN 16 1982

3. ADDRESS OF OPERATOR

P. O. Box 1518 Roswell, NM 88201

O. C. D.

4. LOCATION OF WELL (Report location clearly and in accordance with any State requirements)

At surface

1980' FSL and 2310' FEL

At proposed prod. zone

Same

14. DISTANCE IN MILES AND DIRECTION FROM NEAREST TOWN OR POST OFFICE*

45 miles northeast of Roswell, NM (by the Olive Rd)

15. DISTANCE FROM PROPOSED*

LOCATION TO NEAREST
PROPERTY OR LEASE LINE, FT.
(Also to nearest drlg. unit line, if any)

1980'

16. NO. OF ACRES IN LEASE

2232

17. NO. OF ACRES ASSIGNED
TO THIS WELL

160

18. DISTANCE FROM PROPOSED LOCATION*

TO NEAREST WELL, DRILLING, COMPLETED,
OR APPLIED FOR, ON THIS LEASE, FT.

4,000'

19. PROPOSED DEPTH

4800'

20. ROTARY OR CABLE TOOLS

Rotary

21. ELEVATIONS (Show whether DF, RT, GR, etc.)

3831 GL

22. APPROX. DATE WORK WILL START*

June 1, 1982

23.

PROPOSED CASING AND CEMENTING PROGRAM

SIZE OF HOLE	SIZE OF CASING	WEIGHT PER FOOT	SETTING DEPTH	QUANTITY OF CEMENT
See Note #1	13 3/8"	54.4#	30'	Note #1 Surface and Inter. Csg. all ready set. 300 Sx "C"
"	8 5/8"	24.0#	1400'	
Clean out hole	4 1/2"	10.5#	4800'	

Formerly, Shonandock Oil Corp. Read & Stevens, Inc. S-7 Fed. #1 TD 6210 RA 2-23-72

We propose to re-enter the old R & S Federal "S", Well No. 1, clean out to 4800', run 4 1/2" casing from surface to 4800', attempt completion in the Abo formation.

Mud Program: Mud up below the intermediate casing with salt water gel and brine, Vis. 30-40, Wt. 9.0 - 10.0#, no WL control, add 3% oil.

BOP Program: One 3,000# wp Shaffer Type "LWS" double BOP, with on 90-115 Melco closing unit, 90 gal. capacity.

Gas not dedicated.

IN ABOVE SPACE DESCRIBE PROPOSED PROGRAM: If proposal is to deepen or plug back, give data on present productive zone and proposed new productive zone. If proposal is to drill or deepen directionally, give pertinent data on subsurface locations and measured and true vertical depths. Give blowout preventer program, if any.

24.

Agent for:

SIGNED

TITLE

Read & Stevens, Inc.

DATE May 6, 1982

(This space for Federal or State office use)

PERMIT NO.

APPROVAL DATE

APPROVED BY

TITLE

DATE

CONDITIONS OF APPROVAL, IF ANY:

JUN 4 1982
FOR
JAMES A. GILLHAM
DISTRICT SUPERVISOR

*See Instructions On Reverse Side

NEW MEXICO OIL CONSERVATION COMMISSION
WELL LOCATION AND ACREAGE DEDICATION PLAT

Form O-112
Superseded 6-1-74
Effective 1-1-75

All distances must be from the outer boundaries of the Section

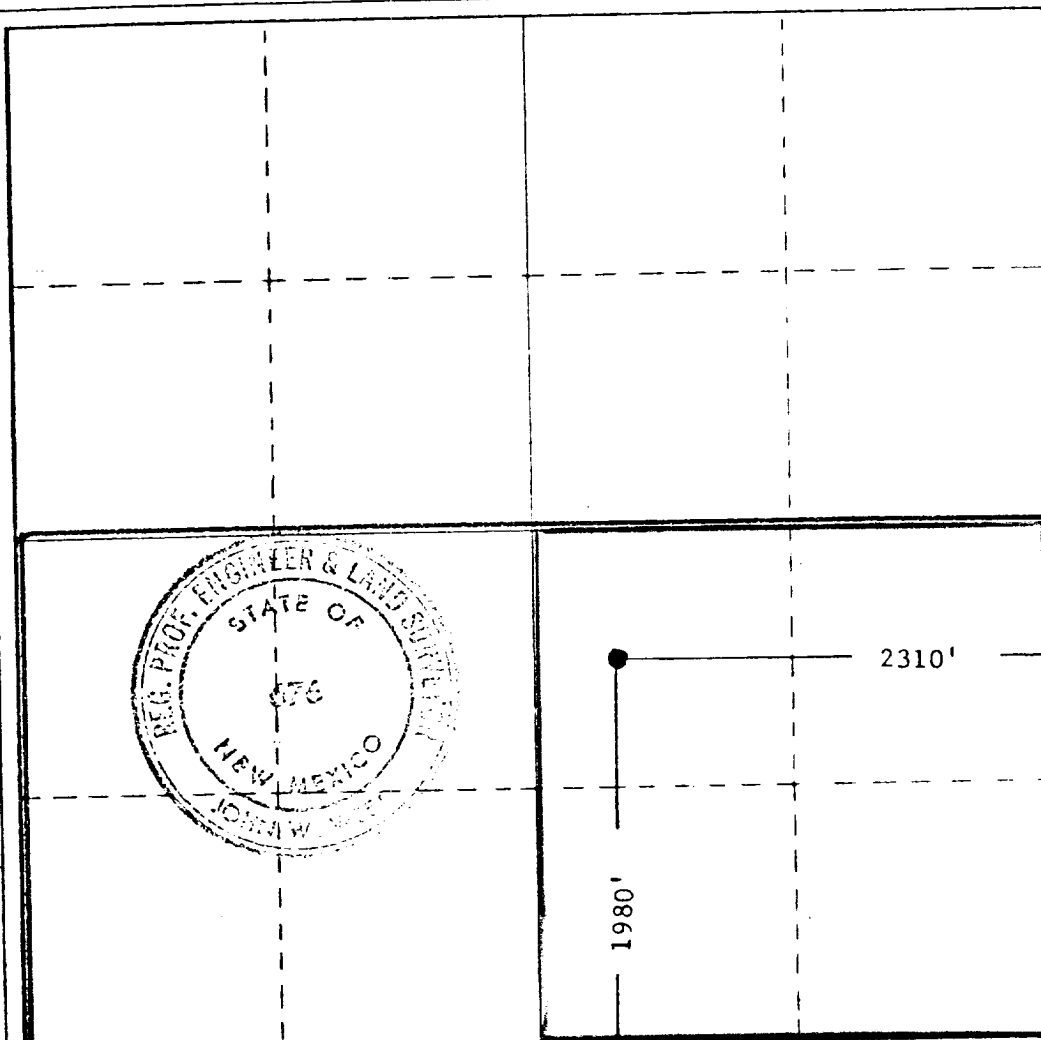
Operator SHENANDOAH OIL CORP. READ & STEVENS, INC.		Lessee READ & STEVENS, INC. FED. S		Well No. WST HAYSTACK FED # 5
Unit Letter J	Section 30	Township 6 SOUTH	Range 27 EAST	County CHAVES
Actual Footage Location of Well: 1980 feet from the SOUTH line and 2310 feet from the EAST line				
Ground Level Elev. 320	Producing Formation Eiseco ABO	Pool Haystack	Dedicated Acreage 320/60	

- Outline the acreage dedicated to the subject well by colored pencil or hatchure marks on the plat below.
- If more than one lease is dedicated to the well, outline each and identify the ownership thereof (both as to working interest and royalty).
Only one lease
- If more than one lease of different ownership is dedicated to the well, have the interests of all owners been consolidated by communitization, unitization, force-pooling, etc?

☐ Yes ☐ No If answer is "yes," type of consolidation _____

If answer is "no," list the owners and tract descriptions which have actually been consolidated. (Use reverse side of this form if necessary.) _____

No allowable will be assigned to the well until all interests have been consolidated (by communitization, unitization, forced-pooling, or otherwise) or until a non-standard unit, eliminating such interests, has been approved by the Commission.



CERTIFICATION

I hereby certify that the information contained herein is true and complete to the best of my knowledge and belief.

Billy Gover
Name **Billy Gover**

Position **Dist. Supt.**

Company **Shenandoah Oil Corp.**

Date **December 20, 1971**

I hereby certify that the well location shown on this plat was plotted from field notes and is true and correct to the best of my knowledge and belief.
RECEIVED
DEC 22 1971
U.S. GEOLOGICAL SURVEY
ARTERIA, NEW MEXICO

Date Surveyed
DEC. 18, 1971

Registered Professional Engineer and/or Land Surveyor

John W. West
Certificate No. **676**

0 330 660 990 1320 1650 1980 2310 2640 2970 3300 3630 3960 4290 4620 4950 5280 5610 5940 6270 6600

APPLICATION FOR DRILLING
(Re-entry)

READ & STEVENS, INC.
West Haystack Federal, Well No. 3
1980' FSL & 2310' FEL, Sec. 30-T6S-R27E
Chaves County, New Mexico
Lease No.: NM-18970
(Exploratory Well)

In conjunction with Form 9-331C, Application for Permit to Drill subject well, Read & Stevens, Inc. submits the following items of pertinent information in accordance with NMS requirements:

1. The geologic surface formation is Permian with quaternary alluvium and other surficial deposits.
2. The estimated tops of geologic markers are as follows:

San Andres	963'	Abo	4237'
Glorieta	2143'	T.D.	4800'
Tubb	3554'		
3. The estimated depth at which anticipated water, oil or gas formations are expected to be encountered:
Water: Surface water at approximately 200 - 300 feet. (Now behind casing.)
Gas: Abo between 4250' and 4650'.
Oil: None anticipated.
4. Proposed Casing Program: See Form 9-331C.
5. Pressure Control Equipment: See Form 9-331C and Exhibit "E".
6. Mud Program: See Form 9-331C.
7. Auxiliary Equipment: Blowout preventer, gas detector, kelly cock, pit level monitor, flow sensors and stabbing valve.
8. Testing, Logging and Coring Program:

Logging: Gamma Ray:	Surface to T. D.
FDC/CNL:	Int. Csg. to T. D.
Dual Ind. Laterolog:	Int. Csg. to T. D.

Drill Stem Tests: None.

Coring: None.
9. No abnormal pressures or temperatures are anticipated. In the event abnormal pressures are encountered, the proposed mud program will be modified to increase the mud weight.
10. Anticipated starting date: June 1, 1982.
Anticipated completion of drilling operations: Approximately two weeks.

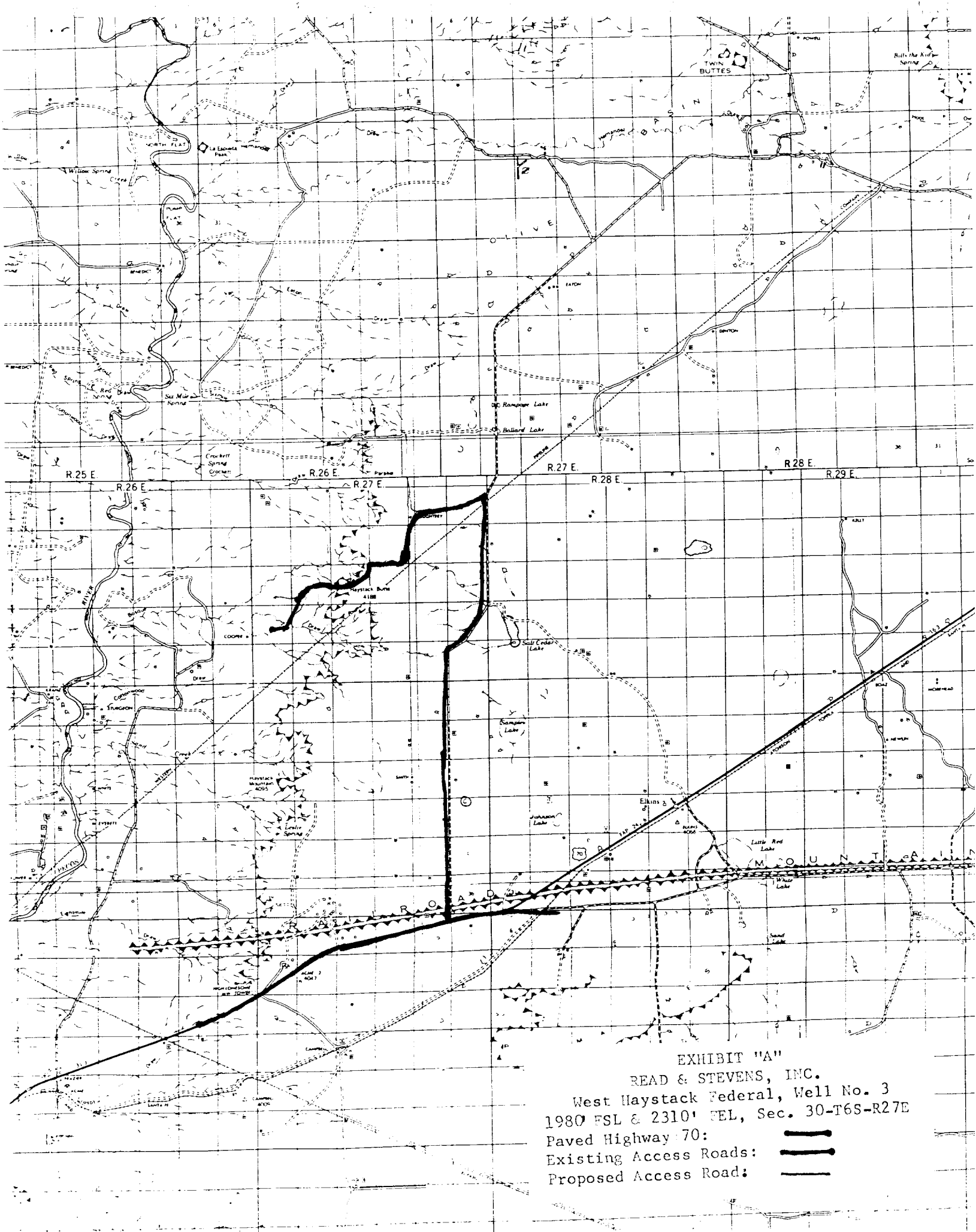
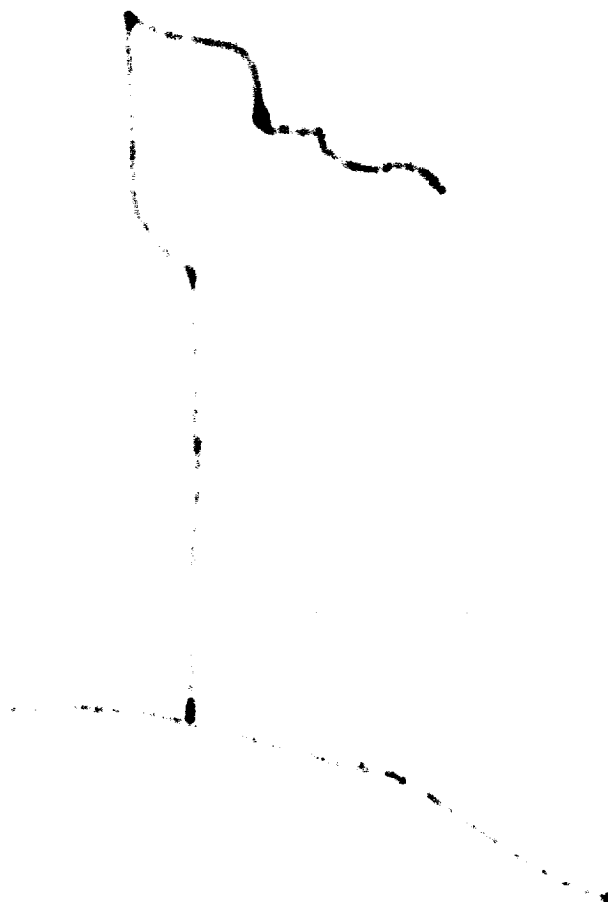


EXHIBIT "A"

READ & STEVENS, INC.

West Haystack Federal, Well No. 3
1980 FSL & 2310' FEL, Sec. 30-T6S-R27E
Paved Highway 70:
Existing Access Roads:
Proposed Access Road:





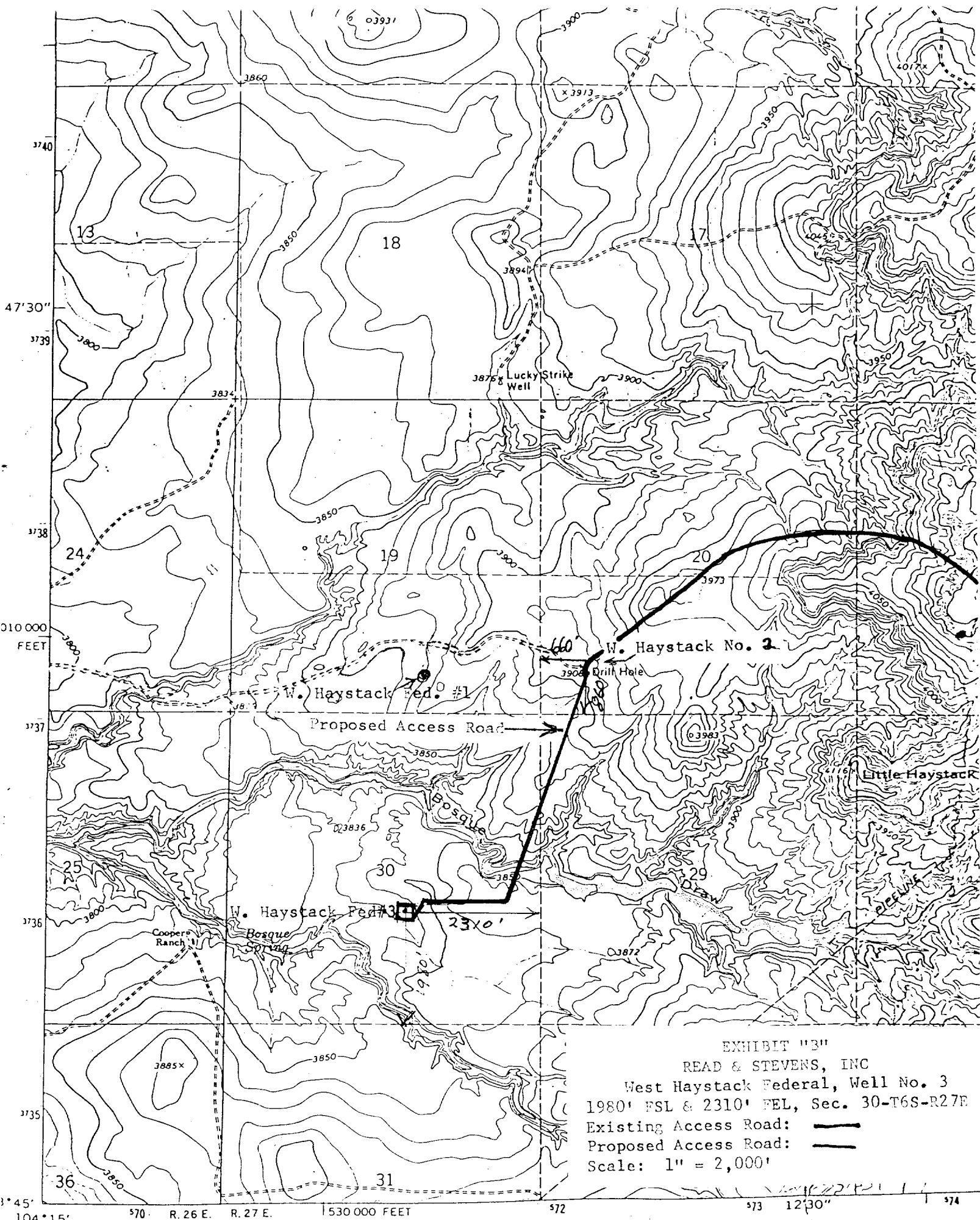


EXHIBIT "3"

READ & STEVENS, INC

West Haystack Federal, Well No. 3

1980' FSL & 2310' FEL, Sec. 30-T6S-R27E

Existing Access Road: ———

Proposed Access Road: - - -

Scale: 1" = 2,000'

SIERRA Drlg. Co.
Rig #2

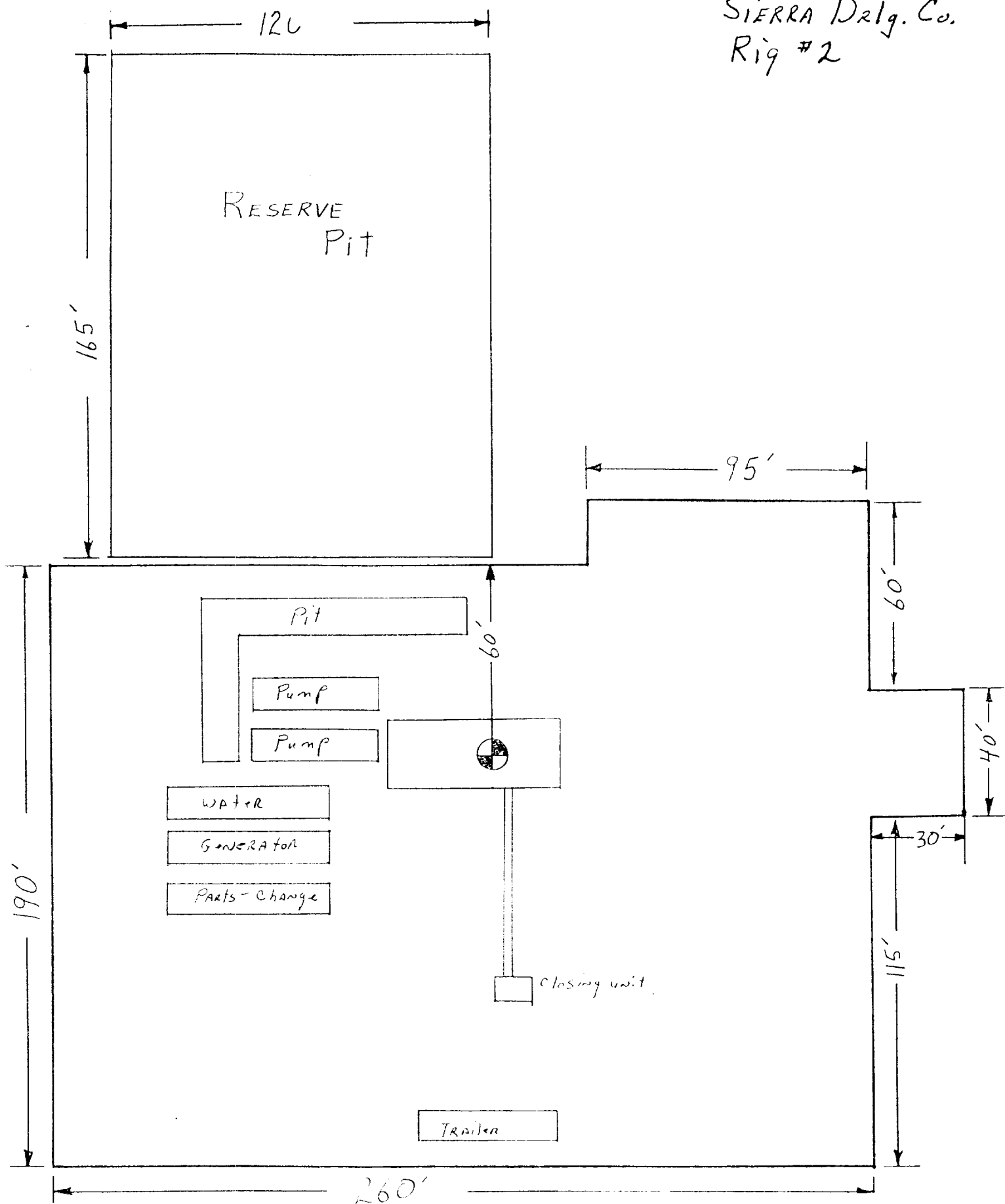


EXHIBIT "D"
READ & STEVENS, INC.
West Haystack Federal, Well No. 3
Rig Layout

SIERRA DRILLING CO. Rig #1
GL to Floor 132"
GL to Bottom of Rotary 116"

This Stack is 110.5"

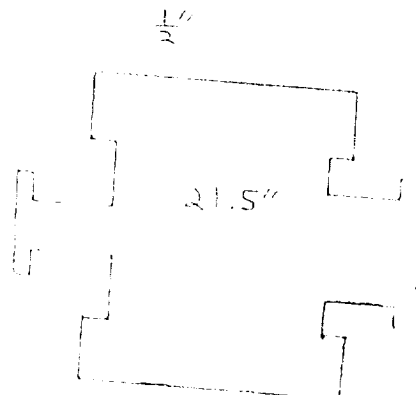
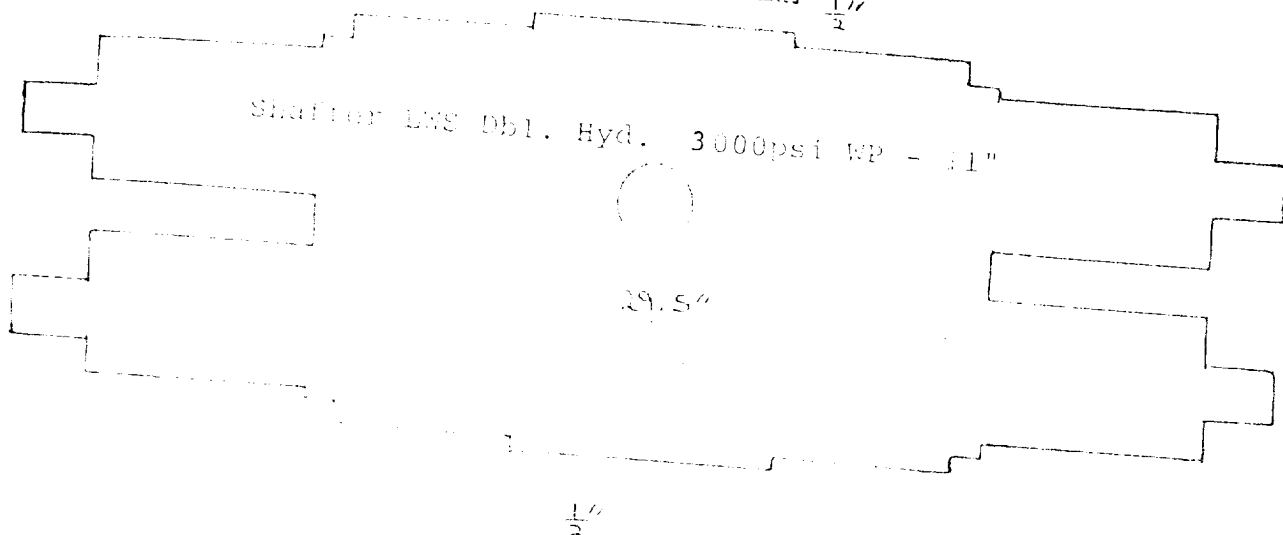
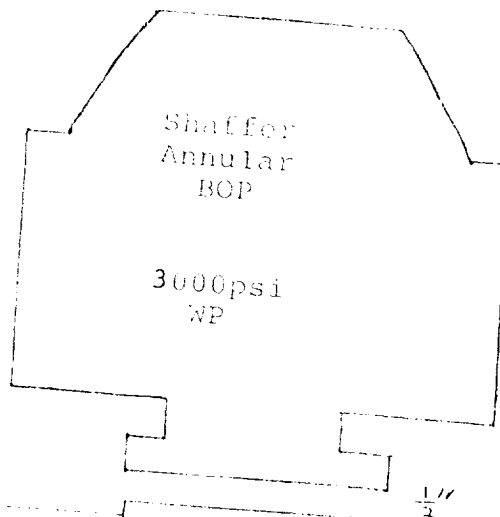
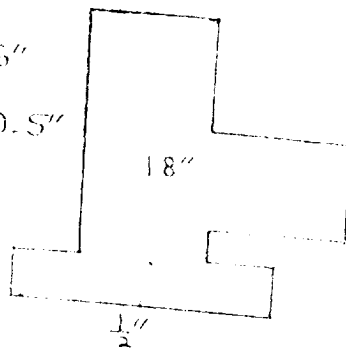


EXHIBIT "E"
READ & STEVENS, INC.
West Haystack Federal, Well No. 3
Blowout Preventer Spec.



STATE OF NEW MEXICO
ENERGY AND MINERALS DEPARTMENT
OIL CONSERVATION DIVISION
ARTESIA DISTRICT OFFICE

BRUCE KING
GOVERNOR
LARRY KEHOE
SECRETARY

June 22, 1982

P.O. DRAWER DD
ARTESIA, NEW MEXICO 88210
(505) 748-1283

Read & Stevens Inc.
P.O. Box 1518
Roswell, New Mexico 88201

Re: West Haystack Federal
#3-J-30-6-27
Chaves County, New Mexico

Gentlemen:

We hereby acknowledge receipt of Federal Forms 9-331 C application for permit to re-enter the subject well, approved on June 4, 1982.

However, this is a non-standard location and must be approved by our Santa Fe office prior to producing the well.

If you have any questions concerning this matter, please feel free to call upon me.

Sincerely,

A handwritten signature in cursive script that reads "W.A. Gressett".

W.A. Gressett
Supervisor, District II

WAG:mm