

District I  
1625 N. French Dr., Hobbs, NM 88240  
District II  
1301 W. Grand Avenue, Artesia, NM 88210  
District III  
1000 Rio Brazos Road, Aztec, NM 87410  
District IV  
1220 S. St. Francis Dr., Santa Fe, NM 87505



State of New Mexico  
Energy Minerals and Natural Resources

Oil Conservation Division  
1220 South St. Francis Dr.  
Santa Fe, NM 87505

C19F  
BhM  
Op

Form C-101  
Revised March 17, 1999

Submit to appropriate District Office  
State Lease - 6 Copies  
Fee Lease - 5 Copies

☐ AMENDED REPORT

APPLICATION FOR PERMIT TO DRILL, RE-ENTER, DEEPEN, PLUGBACK, OR ADD A ZONE

<sup>1</sup> Operator Name and Address <b>CHAMPLIN EXPLORATION, INC. P.O. DRAWER 3488 ENID, OKLAHOMA 73702</b>		<sup>2</sup> GRID Number <b>53454</b>
<sup>3</sup> Property Code <b>30556</b>		<sup>4</sup> API Number <b>30 - 005 - 60224</b>
<sup>5</sup> Property Name <b>CANTER O'BRIEN</b>		<sup>6</sup> Well No. <b>#1</b>

<sup>7</sup> Surface Location									
UL or lot no.	Section	Township	Range	Lot Idn	Feet from the	North/South line	Feet from the	East/West line	County
<b>F</b>	<b>12</b>	<b>95</b>	<b>29E</b>		<b>1980</b>	<b>NORTH</b>	<b>1980</b>	<b>WEST</b>	<b>CHAVES</b>

<sup>8</sup> Proposed Bottom Hole Location If Different From Surface									
UL or lot no.	Section	Township	Range	Lot Idn	Feet from the	North/South line	Feet from the	East/West line	County
<sup>9</sup> Proposed Pool 1 <b>WILDCAT Marrow</b>					<sup>10</sup> Proposed Pool 2				

<sup>11</sup> Work Type Code <b>RE-ENTRY</b>	<sup>12</sup> Well Type Code <b>SINGLE OIL/GAS</b>	<sup>13</sup> Cable Rotary <b>ROTARY</b>	<sup>14</sup> Lease Type Code <b>FREE/PRIVATE</b>	<sup>15</sup> Ground Level Elevation <b>4020'</b>
<sup>16</sup> Multiple <b>NO</b>	<sup>17</sup> Proposed Depth <b>8700'</b>	<sup>18</sup> Formation <b>ATOKA</b>	<sup>19</sup> Contractor <b>ELTARD WELL SERVICE</b>	<sup>20</sup> Spud Date <b>10-1-02</b>

<sup>21</sup> Proposed Casing and Cement Program					
Hole Size	Casing Size	Casing weight/foot	Setting Depth	Sacks of Cement	Estimated TOC
<b>17"</b>	<b>12 3/4"</b>	<b>34#</b>	<b>225'</b>	<b>225</b>	<b>CIRCULATED</b>
<b>11"</b>	<b>8 5/8"</b>	<b>24#</b>	<b>2571'</b>	<b>225</b>	<b>1940'</b>
<b>7 7/8"</b>	<b>4 1/2"</b>	<b>11.6#</b>	<b>8700'</b>	<b>600</b>	<b>6000'</b>

<sup>22</sup> Describe the proposed program. If this application is to DEEPEN or PLUG BACK, give the data on the present productive zone and proposed new productive zone.

Describe the blowout prevention program, if any. Use additional sheets if necessary. **FOR PURPOSE OF RE-ENTERING & ESTABLISHING PRODUCTION FROM VARIOUS ZONES OF INTEREST FROM 6000' TO 8,700' - MIRR WORKOVER UNIT w/ BOPS, PUMPS & REVERSE UNIT TO DRILL PLUGS @ SURFACE, 175'-275'; 1842-1942'; 2470-2570'; 3740-3840'; 6805-6905' & 8250-8350'. RUN 4 1/2" CASING & COMPLETE. & Cement to be tied back to 8 5/8" casing.**

<sup>23</sup> I hereby certify that the information given above is true and complete to the best of my knowledge and belief.		<b>OIL CONSERVATION DIVISION</b>	
Signature: <b>Derrel C. Melton</b>		Approved by: <b>ORIGINAL SIGNED BY TIM W. GUM</b>	
Printed name: <b>DERREL C. MELTON</b>		<b>DISTRICT II SUPERVISOR</b>	
Title: <b>AGENT</b>		Title:	
Date: <b>9/19/02</b>		Approval Date: <b>SEP 20 2002</b>	Expiration Date: <b>SEP 20 2003</b>
Phone: <b>(972-758-1073)</b> <b>580-233-1155</b>		Conditions of Approval:	
		Attached: <input checked="" type="checkbox"/>	

Former: Roger E. Canter  
O'Brien Brothers #1  
TD-9891  
PLA-3-25-74

## District I

1625 N. French Dr., Hobbs, NM 88240

## District II

1301 W. Grand Avenue, Artesia, NM 88210

## District III

1000 Rio Brazos Rd., Aztec, NM 87410

## District IV

1220 S. St. Francis Dr., Santa Fe, NM 87505

## State of New Mexico

Energy, Minerals &amp; Natural Resources Department

## OIL CONSERVATION DIVISION

1220 South St. Francis Dr.

Santa Fe, NM 87505

Form C-102

Revised August 15, 2000

Submit to Appropriate District Office

State Lease - 4 Copies

Fee Lease - 3 Copies

☐ AMENDED REPORT

## WELL LOCATION AND ACREAGE DEDICATION PLAT

<sup>1</sup> API Number 30-005-60224	<sup>2</sup> Pool Code	<sup>3</sup> Pool Name WILDCAT
<sup>4</sup> Property Code	<sup>5</sup> Property Name CANTER O'BRIEN	<sup>6</sup> Well Number #1
<sup>7</sup> OGRID No. 53454	<sup>8</sup> Operator Name CHAMPLIN EXPLORATION, INC.	<sup>9</sup> Elevation 4020'

<sup>10</sup> Surface Location

UL or lot no.	Section	Township	Range	Lot Idn	Feet from the	North/South line	Feet from the	East/West line	County
F	12	9S	29E		1980	NORTH	1980	WEST	CHAVES

<sup>11</sup> Bottom Hole Location If Different From Surface

UL or lot no.	Section	Township	Range	Lot Idn	Feet from the	North/South line	Feet from the	East/West line	County

<sup>12</sup> Dedicated Acres 320	<sup>13</sup> Joint or Infill	<sup>14</sup> Consolidation Code	<sup>15</sup> Order No.
--------------------------------------	-------------------------------	----------------------------------	-------------------------

NO ALLOWABLE WILL BE ASSIGNED TO THIS COMPLETION UNTIL ALL INTERESTS HAVE BEEN CONSOLIDATED OR A NON-STANDARD UNIT HAS BEEN APPROVED BY THE DIVISION

	<sup>17</sup> OPERATOR CERTIFICATION I hereby certify that the information contained herein is true and complete to the best of my knowledge and belief.  Signature DERREL C. MELTON Printed Name AGENT Title 9/19/02 Date
	<sup>18</sup> SURVEYOR CERTIFICATION I hereby certify that the well location shown on this plat was plotted from field notes of actual surveys made by me or under my supervision, and that the same is true and correct to the best of my belief. SEE ATTACHED Date of Survey Signature and Seal of Professional Surveyor:
	Certificate Number

MEXICO OIL CONSERVATION COMM. N  
WELL LOCATION AND ACREAGE DEDICATION PLAT

JUL 19 1972

Form C-102  
Supersedes C-12  
Effective 1-4-65

All distances must be from the outer boundaries of the Section.

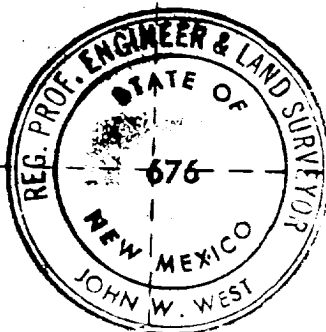
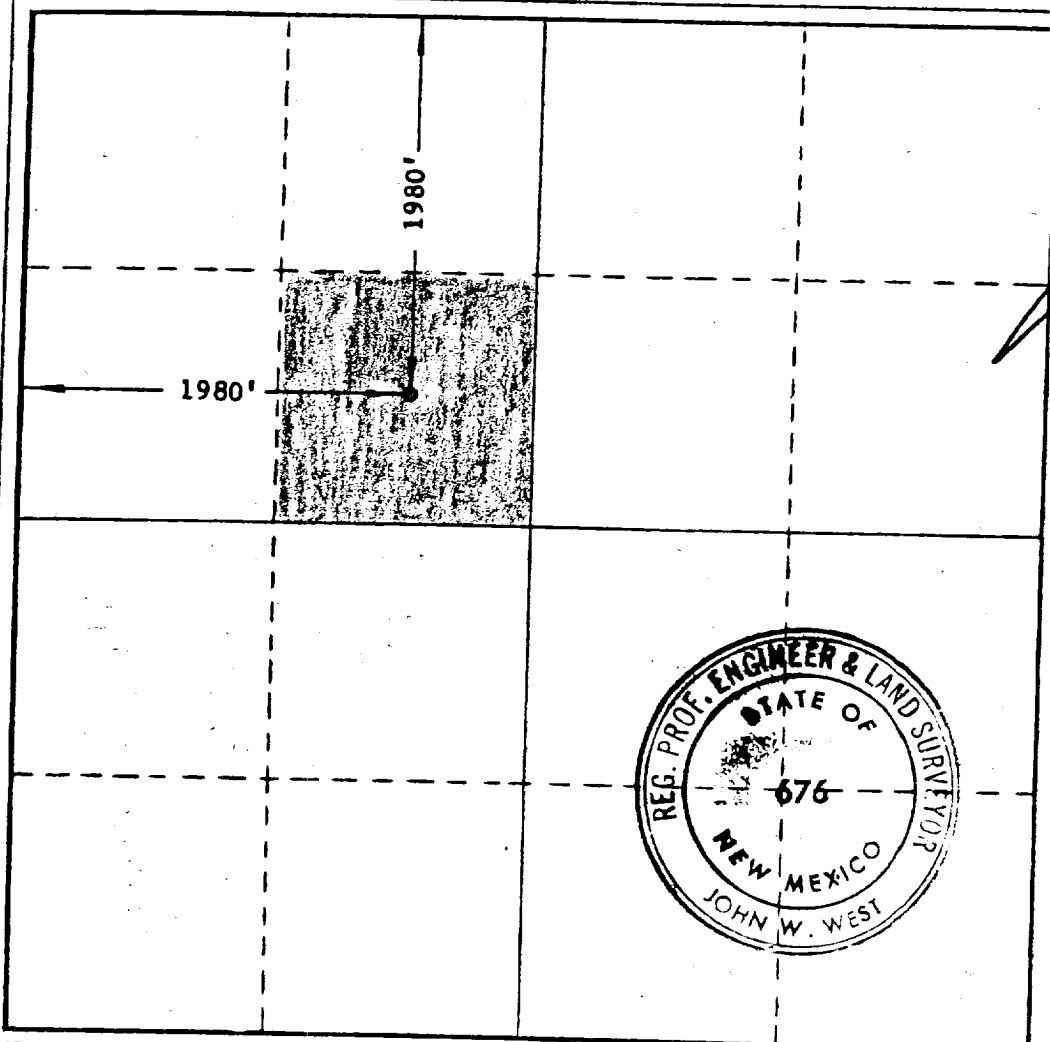
Operator <b>Roger</b> <b>RODGER E. CANTER</b>			Lease <b>O'Brien Brothers</b> <b>CHAMBERLIN ET AL</b>			D. C. C. <b>ARTESIA, OFF No.</b>		
Unit Letter <b>F</b>	Section <b>12</b>	Township <b>9 SOUTH</b>	Range <b>29 EAST</b>	County <b>CHAVES</b>				
Actual Footage Location of Well: <b>1980</b> feet from the <b>NORTH</b> line and <b>1980</b> feet from the <b>WEST</b> line								
Ground Level Elev. <b>4020.23</b>	Producing Formation <b>Dev.</b>			Pool <b>Wildcat</b>		Dedicated Acreage: <b>4.0</b> Acres		

1. Outline the acreage dedicated to the subject well by colored pencil or hachure marks on the plat below.
2. If more than one lease is dedicated to the well, outline each and identify the ownership thereof (both as to working interest and royalty).
3. If more than one lease of different ownership is dedicated to the well, have the interests of all owners been consolidated by communitization, unitization, force-pooling, etc?

☐ Yes ☒ No If answer is "yes," type of consolidation \_\_\_\_\_

If answer is "no," list the owners and tract descriptions which have actually been consolidated. (Use reverse side of this form if necessary.) None

No allowable will be assigned to the well until all interests have been consolidated (by communitization, unitization, forced-pooling, or otherwise) or until a non-standard unit, eliminating such interests, has been approved by the Commission.



CERTIFICATION

I hereby certify that the information contained herein is true and complete to the best of my knowledge and belief.

Name [Signature]  
Position **OWNER**  
Company **Independent**  
Date **7-18-72**

I hereby certify that the well location shown on this plat was plotted from field notes of actual surveys made by me or under my supervision, and that the same is true and correct to the best of my knowledge and belief.

Date Surveyed  
**6-17-1972**  
Registered Professional Engineer  
and/or Land Surveyor

[Signature]  
Certificate No. **676**



CHAMPLIN - CANTER O'BRIEN #1 RE-ENTRY  
SEC. 12-95-29E  
CHAVES COUNTY, NEW MEXICO

