

NO. OF COPIES RECEIVED	
DISTRIBUTION	
SANTA FE	
FILE	
U.S.G.S.	
LAND OFFICE	
OPERATOR	

NEW MEXICO OIL CONSERVATION COMMISSION RECEIVED

SEP 6 1972

30-005-60229

Form C-101
Revised 1-1-65

5A. Indicate Type of Lease STATE <input type="checkbox"/> FEE <input checked="" type="checkbox"/>
5. State Oil & Gas Lease No.
7. Unit Agreement Name
8. Farm or Lease Name Rhodes
9. Well No. 1
10. Field and Pool, or Wildcat Wildcat
12. County Chaves
19. Proposed Depth 7200
19A. Formation Mississippian
20. Rotary or C.T. Rotary
21B. Drilling Contractor Not awarded yet.
22. Approx. Date Work will start October 1, 1972

1. Type of Work DRILL <input checked="" type="checkbox"/> DEEPEN <input type="checkbox"/> PLUG BACK <input type="checkbox"/>	
2. Name of Operator Shenandoah Oil Corporation	
3. Address of Operator 702 Gibbs Tower West, Midland, Texas 79701	
4. Location of Well UNIT LETTER N LOCATED 1980 FEET FROM THE West LINE AND 660 FEET FROM THE South LINE OF SEC. 23 TWP. 14S RGE. 26E NMPM	
5. Elevations (Show whether DF, RT, etc.) G. L. 3300	
6. Kind & Status Plug. Bond Blanket	
7. Drilling Contractor Not awarded yet.	
8. Approx. Date Work will start October 1, 1972	

PROPOSED CASING AND CEMENT PROGRAM

SIZE OF HOLE	SIZE OF CASING	WEIGHT PER FOOT	SETTING DEPTH	SACKS OF CEMENT	EST. TOP
17 1/2"	13 3/8 "	48#	400'	Circ. to surf.	Surface
12 1/4"	8 5/8 "	24#	1250'	Circ. to surf.	Surface
7 7/8"	4 1/2"	9.5# & 10.5#	7300'	Sufficient quantity to adequately cover all potential pay zones.	

The 13 3/8" and 8 5/8" casing strings will be set and cement circulated to surface by plug displacement method. Hydraulic BOP's will be installed during drilling operations and will be tested daily to 1000 psi.

Mud of sufficient weight will be utilized to protect all formations.

APPROVAL VALID
FOR 90 DAYS UNLESS
DRILLING COMMENCED,
EXPIRES 12-11-72

IN ABOVE SPACE DESCRIBE PROPOSED PROGRAM: IF PROPOSAL IS TO DEEPEN OR PLUG BACK, GIVE DATA ON PRESENT PRODUCTIVE ZONE AND PROPOSED NEW PRODUCTIVE ZONE, GIVE BLOWOUT PREVENTER PROGRAM, IF ANY.

I hereby certify that the information above is true and complete to the best of my knowledge and belief.

Signed Thomas E. Henry Title District Production Supt. Date September 7, 1972
(This space for State Use)

APPROVED BY W. A. Gressett TITLE OIL AND GAS INSPECTOR DATE SEP 11 1972

CONDITIONS OF APPROVAL, IF ANY:
Cement must be circulated to surface behind 13 3/8" & 8 5/8" casing

Notify N.M.O.C.C. in sufficient time to witness cementing the 8 5/8" casing

**NEW MEXICO OIL CONSERVATION COMMISSION
WELL LOCATION AND ACREAGE DEDICATION PLAT**

Form C-102
Supersedes C-128
Effective 1-1-65

All distances must be from the outer boundaries of the Section.

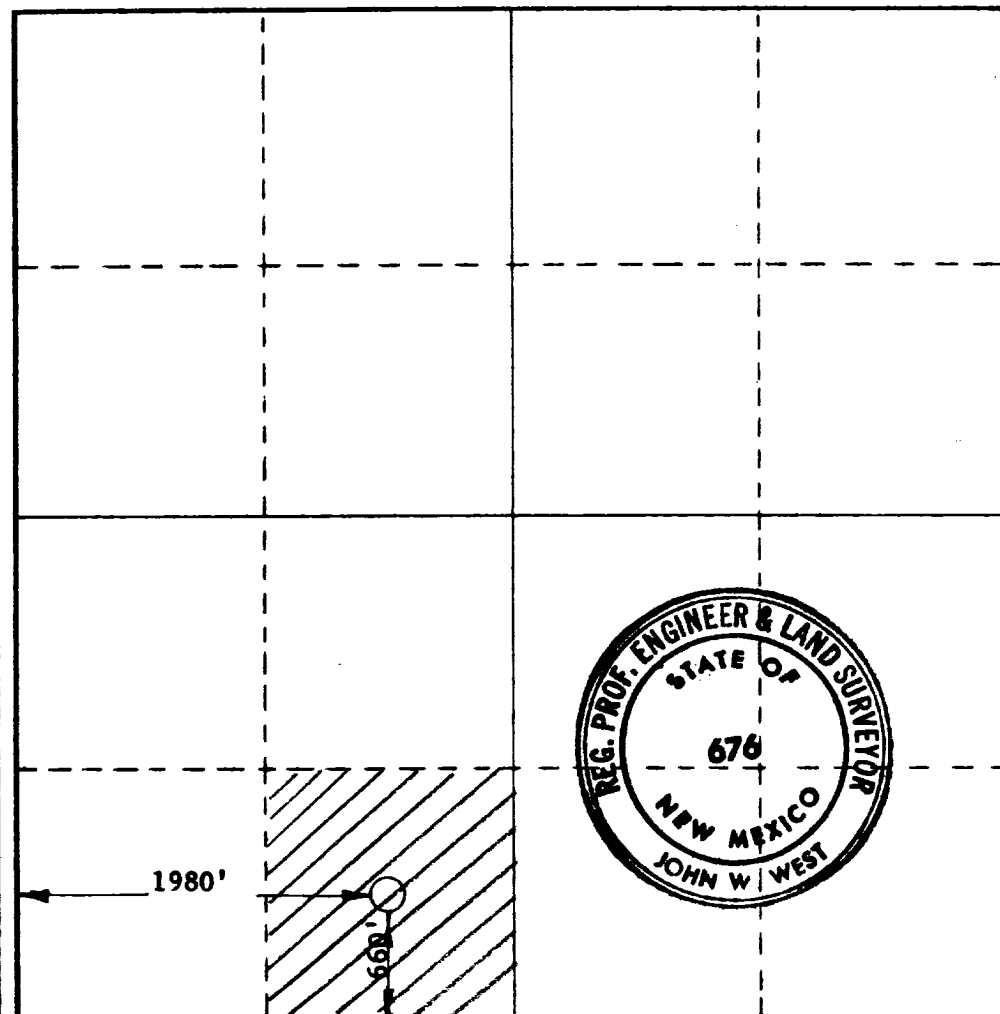
Operator SHENANDOAH OIL CORPORATION			Lease Rhodes		Well No. 1
Unit Letter N	Section 23	Township 14 SOUTH	Range 26 EAST	County CRAVES	
Actual Footage Location of Well: 1980 feet from the WEST line and 660 feet from the SOUTH line					
Ground Level Elev. 3398.6	Producing Formation STRAWN MISS		Pool Wildcat		Dedicated Acreage: 40 Acres

- Outline the acreage dedicated to the subject well by colored pencil or hachure marks on the plat below.
- If more than one lease is dedicated to the well, outline each and identify the ownership thereof (both as to working interest and royalty).
- If more than one lease of different ownership is dedicated to the well, have the interests of all owners been consolidated by communitization, unitization, force-pooling, etc?

☐ Yes ☐ No If answer is "yes," type of consolidation _____

If answer is "no," list the owners and tract descriptions which have actually been consolidated. (Use reverse side of this form if necessary.) _____

No allowable will be assigned to the well until all interests have been consolidated (by communitization, unitization, forced-pooling, or otherwise) or until a non-standard unit, eliminating such interests, has been approved by the Commission.



CERTIFICATION

I hereby certify that the information contained herein is true and complete to the best of my knowledge and belief.

Thomas E. Fenno

Name

THOMAS E. FENNO

Position

District Production Supt.

Company

Shenandoah Oil Corporation

Date

September 7, 1972

I hereby certify that the well location shown on this plat was plotted from field notes of actual surveys made by me or under my supervision, and that the same is true and correct to the best of my knowledge and belief.

Date Surveyed

SEPTEMBER 1, 1972

Registered Professional Engineer and/or Land Surveyor

John W. West

Certificate No.

676

