

NO. OF COPIES RECEIVED	
DISTRIBUTION	
SANTA FE	
FILE	
U.S.G.S.	
LAND OFFICE	
OPERATOR	

RECEIVED

OCT 26 1972

O. C. C.
ARTESIA, OFFICE

30-005-60236

Form C-101
Revised 1-1-65

5A. Indicate Type of Lease	
STATE <input checked="" type="checkbox"/>	FEE <input type="checkbox"/>
5. State Oil & Gas Lease No.	
L-4318-2	

APPLICATION FOR PERMIT TO DRILL, DEEPEN, OR PLUG BACK

1a. Type of Work		7. Unit Agreement Name	
b. Type of Well DRILL <input checked="" type="checkbox"/> DEEPEN <input type="checkbox"/> PLUG BACK <input type="checkbox"/> OIL WELL <input checked="" type="checkbox"/> GAS WELL <input type="checkbox"/> OTHER <input type="checkbox"/> SINGLE ZONE <input checked="" type="checkbox"/> MULTIPLE ZONE <input type="checkbox"/>		8. Farm or Lease Name State 16	
2. Name of Operator Read & Stevens, Inc.		9. Well No. #1	
3. Address of Operator P. O. Box 2126, Roswell, New Mexico 88201		10. Field and Pool, or Wildcat Und. Haystack Sil.-Dev.	
4. Location of Well UNIT LETTER I LOCATED 1980 FEET FROM THE South LINE AND 660 FEET FROM THE East LINE OF SEC. 16 TWP. 6-S RGE. 27-E NMPM		12. County Chaves	
19. Proposed Depth 6600'		19A. Formation Siluro-Devonian	20. Rotary or C.T. Rotary
21. Elevations (Show whether DF, RT, etc.) 4114.3 GR	21A. Kind & Status Plug. Bond Blanket	21B. Drilling Contractor -	22. Approx. Date Work will start October 27, 1972

23.

PROPOSED CASING AND CEMENT PROGRAM

SIZE OF HOLE	SIZE OF CASING	WEIGHT PER FOOT	SETTING DEPTH	SACKS OF CEMENT	EST. TOP
17-1/2"	12-3/4"	34#	30'	circulated	surface
11"	8-5/8"	24#	1400'	circulated	surface
7-7/8"	5-1/2"	14#, 15.5#, 17#	6500'	sufficient amount to cover all potentially productive zones	

The 12-3/4" casing will be set with rat hole machine and cemented; the 8-5/8" casing will be set by Rotary and cement circulated to surface by plug displacement. If commercial production is encountered, the 5-1/2" casing will be set by Rotary and cement brought to a depth sufficient to cover all potentially productive zones.

The 8-5/8" casing and BOP's will be tested to 1000 psi prior to drilling out casing shoe; the 5-1/2" casing will be tested to 1000 psi prior to perforating for production.

APPROVAL VALID
FOR 90 DAYS UNLESS
DRILLING COMMENCED,
EXPIRES 1-26-73

IN ABOVE SPACE DESCRIBE PROPOSED PROGRAM: IF PROPOSAL IS TO DEEPEN OR PLUG BACK, GIVE DATA ON PRESENT PRODUCTIVE ZONE AND PROPOSED NEW PRODUCTIVE ZONE. GIVE BLOWOUT PREVENTER PROGRAM, IF ANY.

I hereby certify that the information above is true and complete to the best of my knowledge and belief.

Signed John L. Anderson Title Agent Date October 19, 1972

(This space for State Use)

APPROVED BY W. A. Gressett TITLE OIL AND GAS INSPECTOR DATE OCT 26 1972

CONDITIONS OF APPROVAL, IF ANY:
Cement must be circulated to
surface behind 8 7/8" casing

**MEXICO OIL CONSERVATION COMMISSION
WELL LOCATION AND ACREAGE DEDICATION PLAT**

Form C-102
Supersedes C-128
Effective 1-1-65

All distances must be from the outer boundaries of the Section.

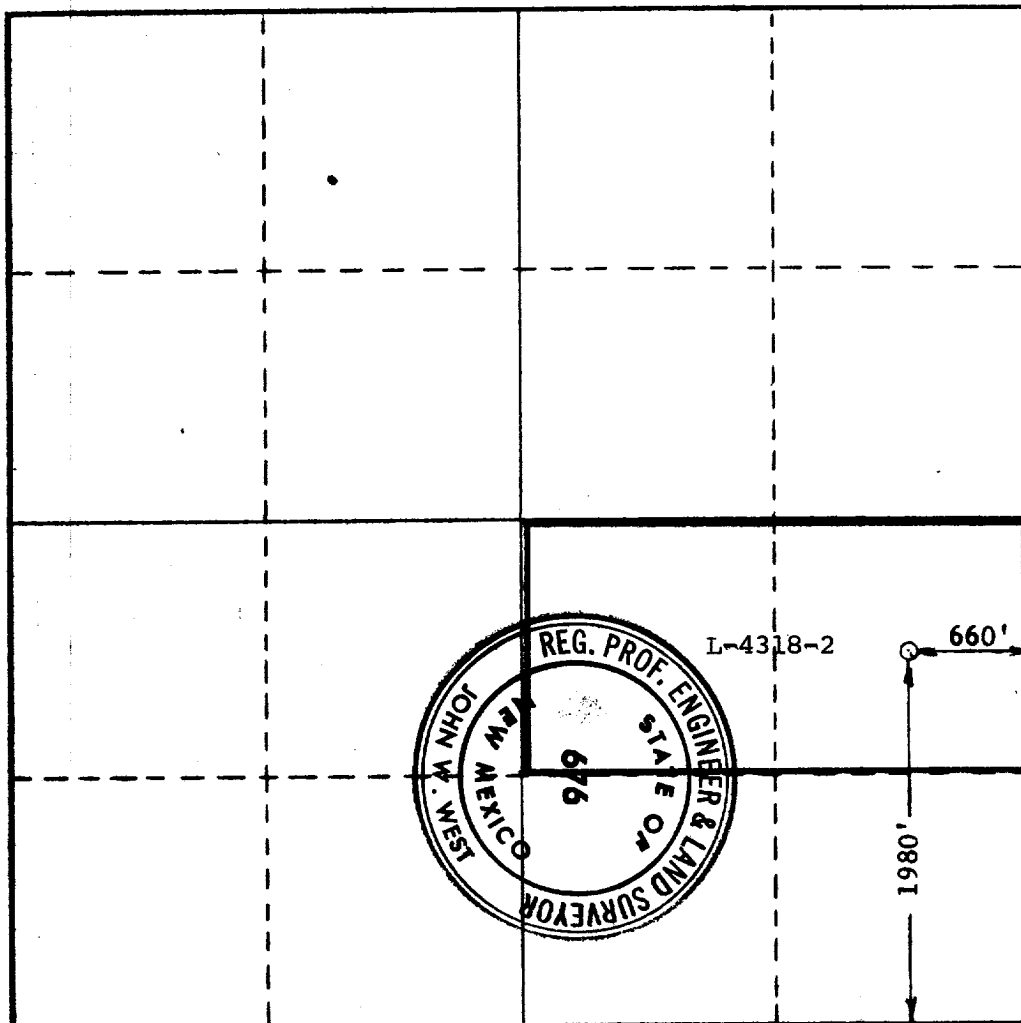
Operator READ & STEVENS, INC.			Lease STATE 16		Well No. 1
Unit Letter I	Section 16	Township 6 SOUTH	Range 27 EAST	County CHAVES	
Actual Footage Location of Well:					
1980 feet from the SOUTH line and		660 feet from the EAST line			
Ground Level Elev. 4114.3	Producing Formation Siluro-Devonian	Pool Undesignated	Dedicated Acreage: 80.00 Acres		

1. Outline the acreage dedicated to the subject well by colored pencil or hachure marks on the plat below.
2. If more than one lease is dedicated to the well, outline each and identify the ownership thereof (both as to working interest and royalty).
3. If more than one lease of different ownership is dedicated to the well, have the interests of all owners been consolidated by communitization, unitization, force-pooling, etc?

☐ Yes ☐ No If answer is "yes," type of consolidation _____

If answer is "no," list the owners and tract descriptions which have actually been consolidated. (Use reverse side of this form if necessary.) _____

No allowable will be assigned to the well until all interests have been consolidated (by communitization, unitization, forced-pooling, or otherwise) or until a non-standard unit, eliminating such interests, has been approved by the Commission.



CERTIFICATION

I hereby certify that the information contained herein is true and complete to the best of my knowledge and belief.

John W. West
Name

Position

Agent

Company

Read & Stevens, Inc.

Date

October 19, 1972

I hereby certify that the well location shown on this plat was plotted from field notes of actual surveys made by me or under my supervision, and that the same is true and correct to the best of my knowledge and belief.

Date Surveyed

OCTOBER 14, 1972

Registered Professional Engineer
and/or Land Surveyor

John W. West
Certificate No. **676**

0 320 640 960 1280 1600 1920 2240 2560 2880 3200 3520 3840 4160 4480 4800 5120 5440 5760 6080 6400