

UNITED STATES
DEPARTMENT OF THE INTERIOR
GEOLOGICAL SURVEY

30-005-60238

APPLICATION FOR PERMIT TO DRILL, DEEPEN, OR PLUG BACK

1a. TYPE OF WORK
DRILL ☒ DEEPEN ☐ PLUG BACK ☐

b. TYPE OF WELL
OIL WELL ☒ GAS WELL ☐ OTHER ☐ SINGLE ZONE ☐ MULTIPLE ZONE ☐

2. NAME OF OPERATOR
McCLELLAN OIL CORPORATION *

3. ADDRESS OF OPERATOR
P. O. Box 848, ROSWELL, NEW MEXICO 88201

4. LOCATION OF WELL (Report location clearly and in accordance with any State requirements.)
At surface
1980 FSL & 660 FWL
At proposed prod. zone
NOV 17 1972

14. DISTANCE IN MILES AND DIRECTION FROM NEAREST TOWN OR POST OFFICE*
30 MILES N. LOCO HILLS
O. C. C. ARTESIA OFFICE

15. DISTANCE FROM PROPOSED* LOCATION TO NEAREST PROPERTY OR LEASE LINE, FT. (Also to nearest drlg. unit line, if any)
16. NO. OF ACRES IN LEASE
760

17. NO. OF ACRES ASSIGNED TO THIS WELL
40

18. DISTANCE FROM PROPOSED LOCATION* TO NEAREST WELL, DRILLING, COMPLETED, OR APPLIED FOR, ON THIS LEASE, FT.
19. PROPOSED DEPTH
1550

20. ROTARY OR CABLE TOOLS
CABLE TOOL

21. ELEVATIONS (Show whether DF, RT, GR, etc.)
3677 G.L.

22. APPROX. DATE WORK WILL START*
NOVEMBER 25, 1972

5. LEASE DESIGNATION AND SERIAL NO.
NM-0324243

6. IF INDIAN, ALLOTTEE OR TRIBE NAME

7. UNIT AGREEMENT NAME
NORTH KING CAMP UNIT

8. FARM OR LEASE NAME

9. WELL NO.
7

10. FIELD AND POOL, OR WILDCAT
WILDCAT

11. SEC., T., R., M., OR BLK. AND SURVEY OR AREA
SEC. 17, T-13-S, R-29-E

12. COUNTY OR PARISH
CHAVES

13. STATE
NEW MEXICO

PROPOSED CASING AND CEMENTING PROGRAM

SIZE OF HOLE	SIZE OF CASING	WEIGHT PER FOOT	SETTING DEPTH	QUANTITY OF CEMENT
12 1/4"	8-5/8"	20 LB.	275	100 SX CIRC.
8"	5 1/2"	15 LB.	1550	100 SX

PROPOSE TO DRILL TO APPROXIMATELY 1550 TO TEST QUEEN SAND.

IF PRODUCTIVE, WILL RUN CASING AND ATTEMPT COMPLETION.

CORTEZ DRILLING COMPANY, Box 848, ROSWELL, NEW MEXICO 88201

WILL BE THE DRILLING CONTRACTOR.

IN ABOVE SPACE DESCRIBE PROPOSED PROGRAM: If proposal is to deepen or plug back, give data on present productive zone and propose to complete zone. If proposal is to drill or deepen directionally, give pertinent data on subsurface locations and measured and true vertical depths. If flowout preventer program, if any.

24. SIGNED James L. McClellan TITLE PRESIDENT DATE NOVEMBER 14, 1972

(This space for Federal or State office use)

PERMIT NO. _____ APPROVAL DATE _____

APPROVED BY
CONDITIONS OF APPROVAL, IF ANY:

TITLE _____

DATE _____

APPROVED
NOV 16 1972
H. L. BECKMAN
ACTING DISTRICT ENGINEER

THIS APPROVAL IS RESCINDED IF OPERATIONS
ARE NOT COMPLETED WITHIN 3 MONTHS.
FEB 16 1973
See Instructions On Reverse Side

RECEIVED
NOV 15 1972
U. S. GEOLOGICAL SURVEY
ARTESIA, NEW MEXICO

RECEIVED
JAN 31 1964
FBI - NEW YORK
COMMUNICATIONS SECTION

**N. MEXICO OIL CONSERVATION COMMISSION
WELL LOCATION AND ACREAGE DEDICATION PLAT**

Form C-102
Supersedes C-128
Effective 1-1-65

All distances must be from the outer boundaries of the Section.

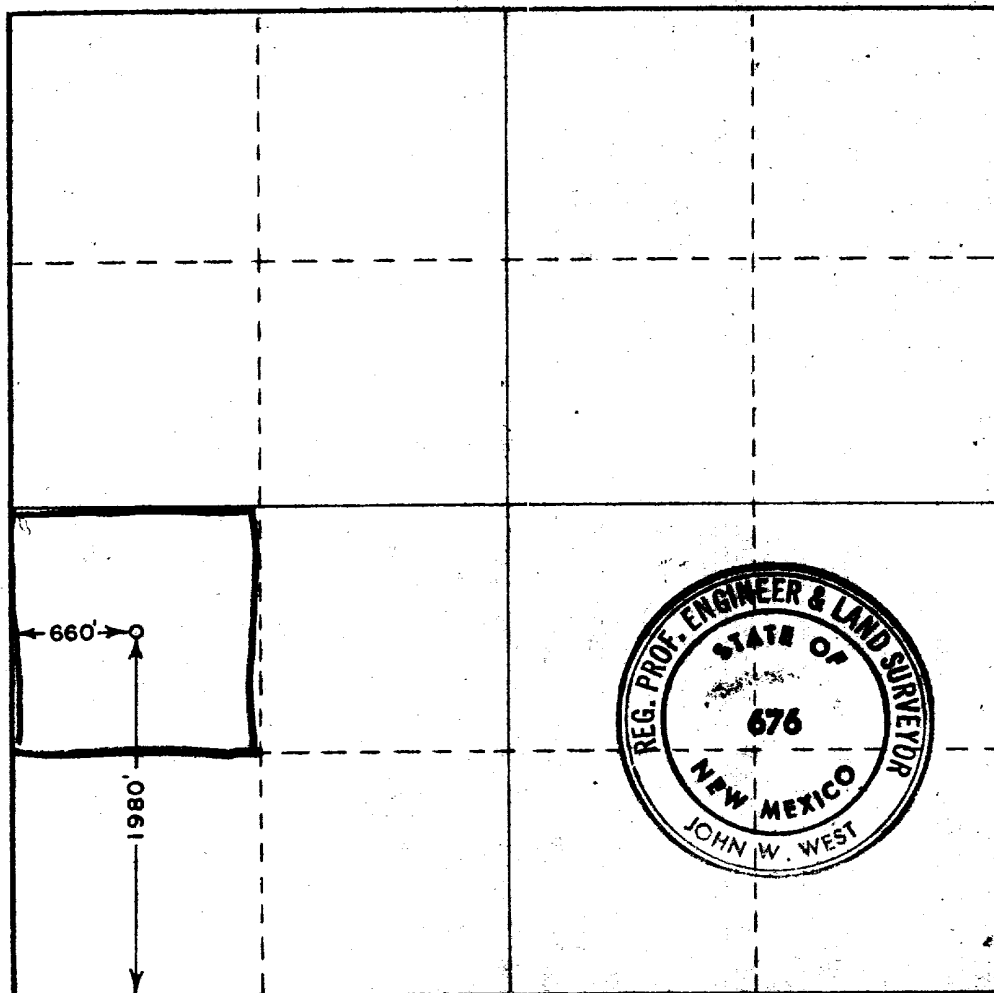
Operator McCLELLAN OIL CORP.			Lease NORTH KING CAMP UNIT		Well No. 7
Unit Letter L	Section 17	Township 13 SOUTH	Range 29 EAST	County CHAVES	
Actual Footage Location of Well: 1980 feet from the SOUTH line and 660 feet from the WEST line					
Ground Level Elev. 3677	Producing Formation QUEEN SAND		Pool WILDCAT	Dedicated Acreage: 40 Acres	

1. Outline the acreage dedicated to the subject well by colored pencil or hachure marks on the plat below.
2. If more than one lease is dedicated to the well, outline each and identify the ownership thereof (both as to working interest and royalty).
3. If more than one lease of different ownership is dedicated to the well, have the interests of all owners been consolidated by communitization, unitization, force-pooling, etc?

☐ Yes ☐ No If answer is "yes," type of consolidation _____

If answer is "no," list the owners and tract descriptions which have actually been consolidated. (Use reverse side of this form if necessary.) _____

No allowable will be assigned to the well until all interests have been consolidated (by communitization, unitization, forced-pooling, or otherwise) or until a non-standard unit, eliminating such interests, has been approved by the Commission.



CERTIFICATION

I hereby certify that the information contained herein is true and complete to the best of my knowledge and belief.

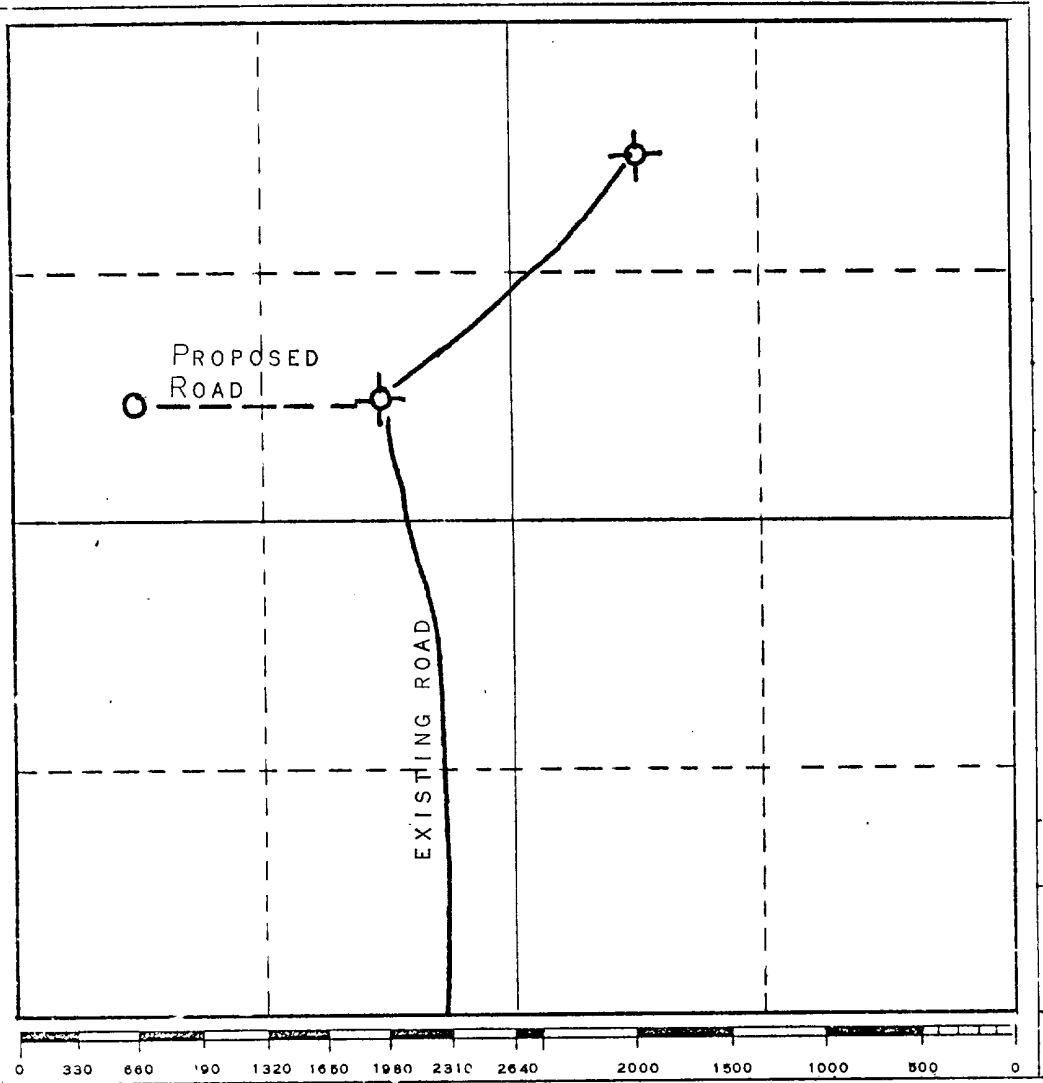
Name *John J. McClellan*
 Position PRESIDENT
 Company MCCLELLAN OIL CORP.
 Date 11/14/72

I hereby certify that the well location shown on this plat was plotted from field notes of a survey made by me or under my supervision and that the same is correct to the best of my knowledge.

Date Surveyed SEPTEMBER 12, 1972
 Registered Professional Engineer and/or Land Surveyor
John W. West
 Certificate No. 676

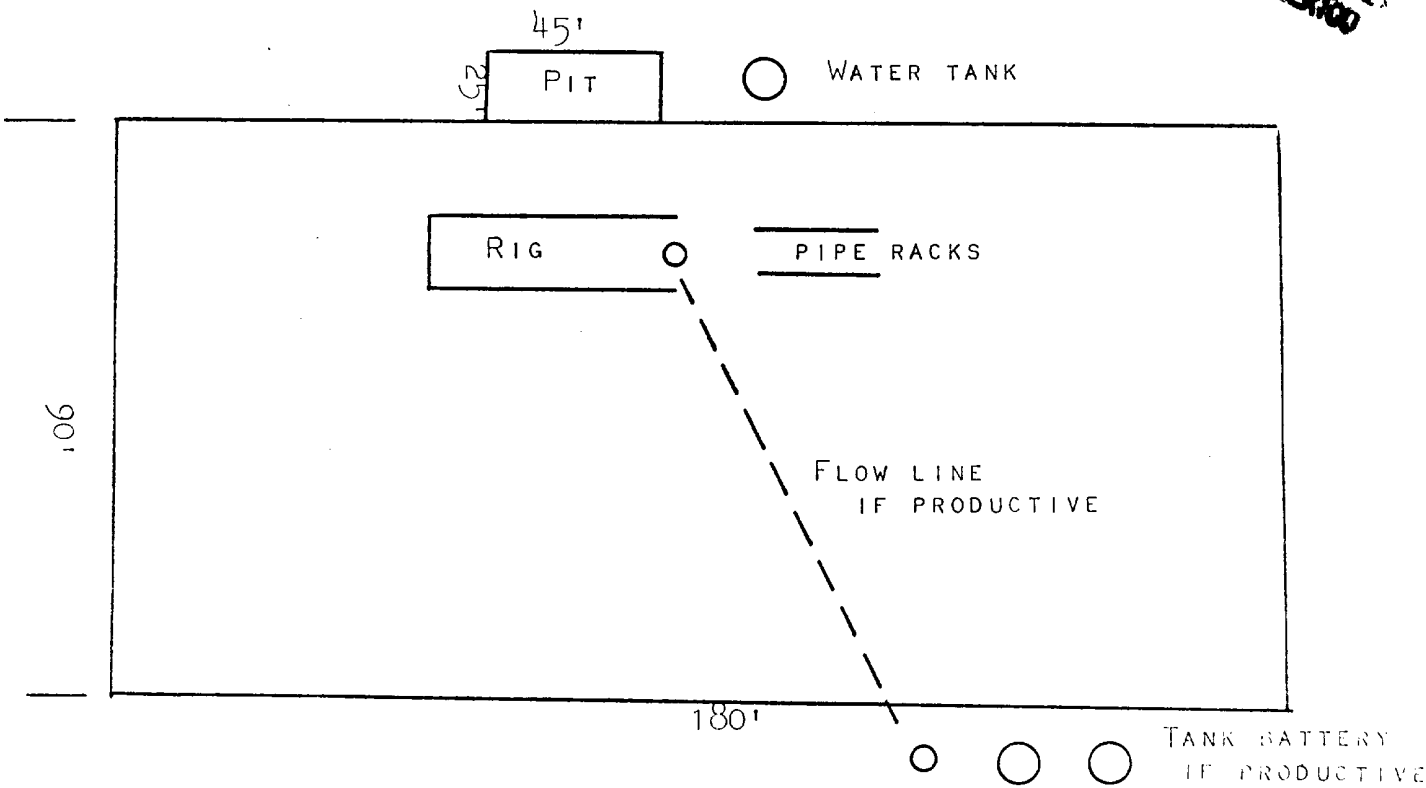
0 330 660 990 1320 1650 1980 2310 2640 2970 3300 3630 3960 4290 4620 4950 5280 5610 5940 6270 6600

PLAN OF DEVELOPMENT FOR NORTH KING CAMP UNIT No. 7.



PROPOSE TO USE EXISTING RANCH AND OILFIELD ROADS AND CONSTRUCT NEW ROAD FROM DRY HOLE TO LOCATION. NEW ROAD WILL BE 1220'. NO WATER EXISTS IN THE AREA OF PROPOSED TEST AND WILL BE TRUCKED IN. COMBUSTIBLE MATERIAL WILL BE BURNED, NON-COMBUSTIBLE MATERIAL WILL BE BURIED WITH PIT FILLING. AFTER COMPLETION OR ABANDONMENT, THE PIT WILL BE FILLED AND THE LOCATION CLEANED.

RECEIVED
NOV 15 1972
U.S. GEOLOGICAL SURVEY
ARTESIA, NEW MEXICO



RECEIVED