

NEW MEXICO OIL CONSERVATION COMMISSION
WELL LOCATION AND ACREAGE DEDICATION PLAN

Form C-102
Supersedes C-128
Effective 1-1-65

All distances must be from the outer boundaries of the Section.

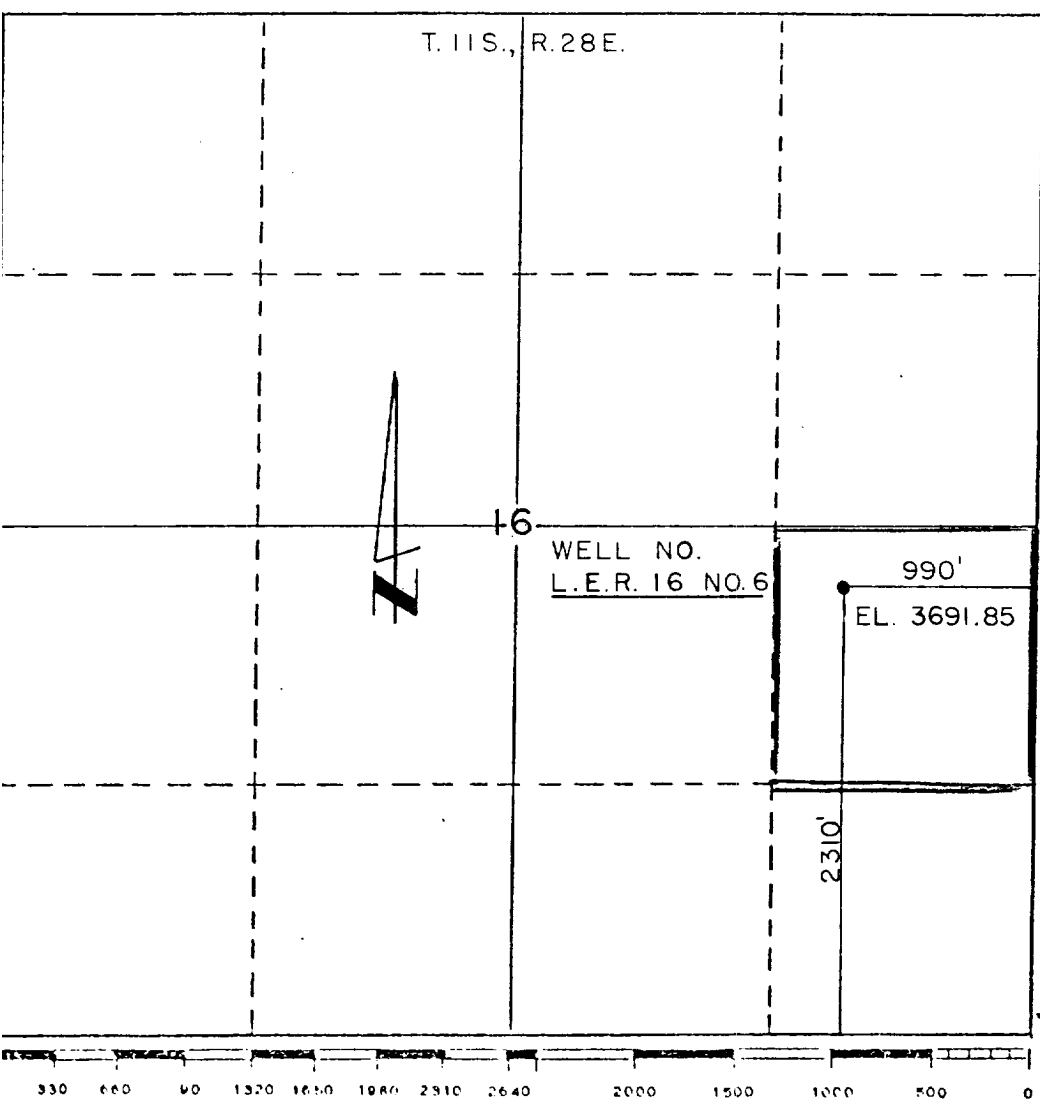
Operator Plains Radio Broadcasting Co.		Lease LER 16		Well No. 6
Unit Letter I	Section 16	Township 11 South	Range 28 East	County Chaves
Actual Footage Location of Well: 2310 feet from the south line and 990 feet from the east line				
Ground Level Elev. 3691.85	Producing Formation San Andres	Pool E.Chisum, and SA	Dedicated Acreage per 40 Acres	

1. Outline the acreage dedicated to the subject well by colored pencil or hachure marks on the plat below.
2. If more than one lease is dedicated to the well, outline each and identify the ownership thereof (both as to working interest and royalty).
3. If more than one lease of different ownership is dedicated to the well, have the interests of all owners been consolidated by communitization, unitization, force-pooling, etc.?

Yes No If answer is "yes," type of consolidation _____

If answer is "no," list the owners and tract descriptions which have actually been consolidated. (Use reverse side of this form if necessary.) _____

No allowable will be assigned to the well until all interests have been consolidated (by communitization, unitization, forced-pooling, or otherwise) or until a non-standard unit, eliminating such interests, has been approved by the Commission.



CERTIFICATION	
I hereby certify that the information contained herein is true and complete to the best of my knowledge and belief.	
Fred Pool, Jr.	
Name	
Contractor	
Position	
Plains Radio Broadcasting Co.	
Company	
10-6-78	
Date	
<i>Fred Pool Jr</i>	
I hereby certify that the well location shown on this plat was plotted from field notes of actual surveys made by me or under my supervision, and that the same is true and correct to the best of my knowledge and belief.	
July 13, 1978	
Date Surveyed	
Thomas P. Mann P.E. & L.S.	
Registered Professional Engineer and/or Land Surveyor	
<i>Thomas P. Mann</i>	
Certificate No.	
NM. # 277	