

NEW MEXICO OIL CONSERVATION COMMISSION
WELL LOCATION AND ACREAGE DEDICATION AT

Form C-102
 Supersedes C-128
 Effective 1-1-65

All distances must be from the outer boundaries of the Section.

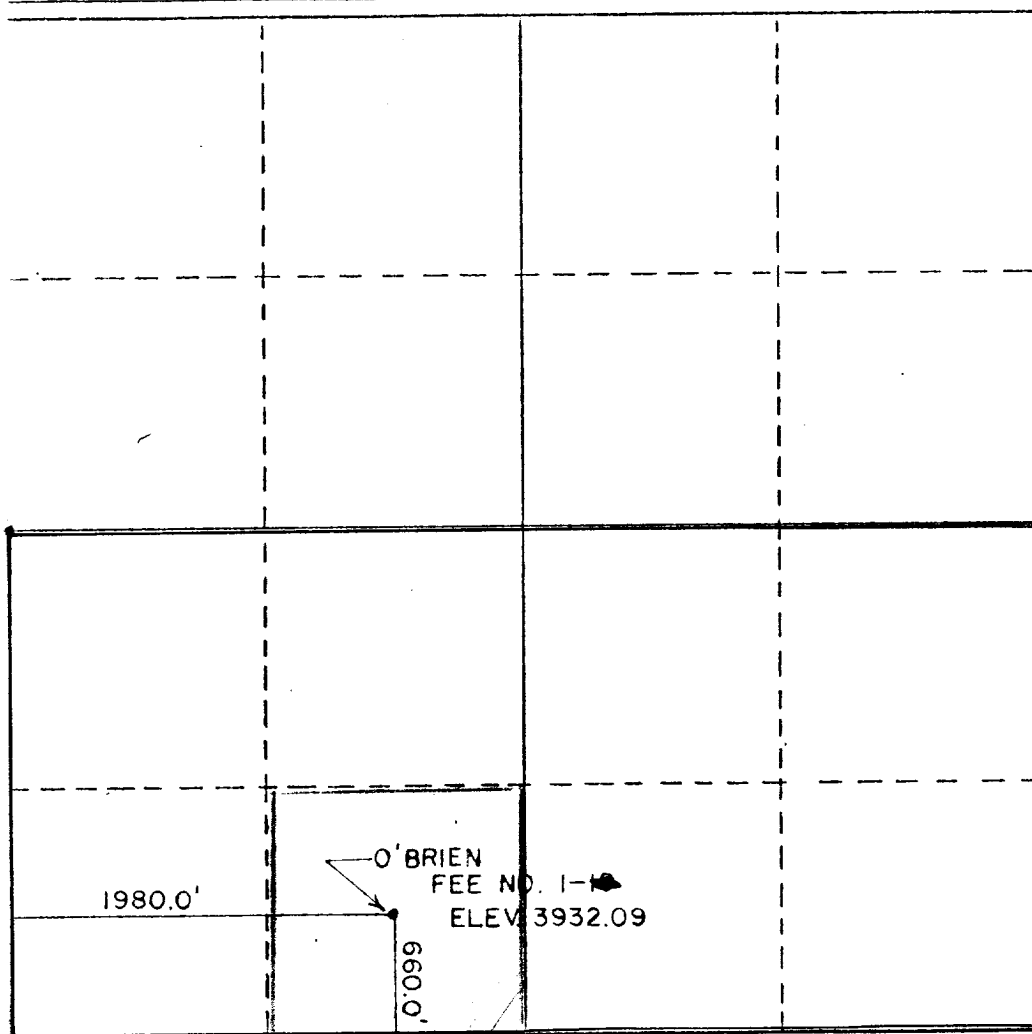
| | | | | | |
|---|--|------------------------|-----------------------------|---|------------------------|
| Operator The Harlow Corporation | | | Lease O'Brien-Fee | | Well No. 1-1 |
| Unit Letter N | Section 19 | Township 8 S | Range 29 E | County Chaves | |
| Actual Footage Location of Well: 660 feet from the south line and 1980 feet from the west line | | | | | |
| Ground Level Elev. 3932.09' | Producing Formation San Andres | Pool Wildcat | | Dedicated Acreage: 320 40 Acres | |

1. Outline the acreage dedicated to the subject well by colored pencil or hatchure marks on the plat below.
2. If more than one lease is dedicated to the well, outline each and identify the ownership thereof (both as to working interest and royalty).
3. If more than one lease of different ownership is dedicated to the well, have the interests of all owners been consolidated by communitization, unitization, force-pooling, etc?

☒ Yes ☐ No If answer is "yes," type of consolidation ~~Unitization by Farm out~~

If answer is "no," list the owners and tract descriptions which have actually been consolidated. (Use reverse side of this form if necessary.) _____

No allowable will be assigned to the well until all interests have been consolidated (by communitization, unitization, forced-pooling, or otherwise) or until a non-standard unit, eliminating such interests, has been approved by the Commission.



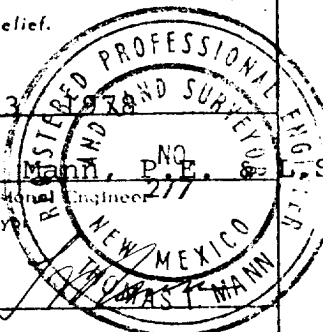
CERTIFICATION

I hereby certify that the information contained herein is true and complete to the best of my knowledge and belief.

Name *[Signature]*
 Position
President
 Company
The Harlow Corporation
 Date
October 25, 1978

I hereby certify that the well location shown on this plat was plotted from field notes of actual surveys made by me or under my supervision, and that the same is true and correct to the best of my knowledge and belief.

Date Surveyed
October 13, 1978
 Registered Professional Engineer and/or Land Surveyor
Thomas T. Mann, P.E. & L.S.
 Certificate No.
New Mexico No. 277



330 660 990 1320 1650 1980 2310 2640 2970 3300 3630 3960 4290 4620 4950 5280 5610 5940 6270 6600