

NO. OF COPIES RECEIVED	5
DISTRIBUTION	
SANTA FE	1
FILE	1
U.S.G.S.	2
LAND OFFICE	
OPERATOR	1

NEW MEXICO OIL CONSERVATION COMMISSION

RECEIVED

JAN 05 1981

ARTESIA, NM

30-005-60844

Form C-101
Revised 1-1-65

5A. Indicate Type of Lease
STATE ☐ FEE ☒

5. State Oil & Gas Lease No.

APPLICATION FOR PERMIT TO DRILL, DEEPEN, OR PLUG BACK

1a. Type of Work b. Type of Well OIL WELL <input checked="" type="checkbox"/> GAS WELL <input type="checkbox"/> OTHER <input type="checkbox"/> 2. Name of Operator SelCo, Inc. ✓ 3. Address of Operator P.O. Box 798, Artesia, New Mexico 88210 4. Location of Well UNIT LETTER <u>F</u> LOCATED <u>1980</u> FEET FROM THE <u>North</u> LINE AND <u>1980</u> FEET FROM THE <u>West</u> LINE OF SEC. <u>7</u> TWP. <u>9S</u> RGE. <u>29E</u> NMPM 19. Proposed Depth 2700' 19A. Formation San Andres 20. Rotary or C.T. Rotary 21. Elevations (Show whether DF, RT, etc.) 3915.8 21A. Kind & Status Plug. Bond One-Well 21B. Drilling Contractor Collier Drilling Corp. 22. Approx. Date Work will start January 7, 1981		7. Unit Agreement Name 8. Farm or Lease Name Moonshine 7 9. Well No. #1 10. Field and Pool or Wildcat Wildcat - Twin Lakes - 3A 12. County Eddy
--	--	---

23.

PROPOSED CASING AND CEMENT PROGRAM

SIZE OF HOLE	SIZE OF CASING	WEIGHT PER FOOT	SETTING DEPTH	SACKS OF CEMENT	EST. TOP
10 3/4"	8 5/8"	24#	300'	150 Sxs.	Surface
7 7/8"	4 1/2"	10 1/2#	2700'	700 Sxs.	Surface

Plan to test the San Andres formation. 8 5/8" casing will be run to approximately 300' and set with 150 Sxs. of Class C cement with 2% CaCl. Cement will be circulated to surface. Will drill out of the 8 5/8" casing with 7 7/8" bit to approximately 2700'. If sufficient shows are encountered will then run 2700' of 4 1/2" casing and set with 700 Sxs. of 50/50 poz mix 2% gel and 8# salt/sx. cement to surface. Will then log, perforate and complete well.

APPROVAL VALID
FOR 90 DAYS UNLESS
DRILLING COMMENCED,

EXPIRES 4-7-81

IN ABOVE SPACE DESCRIBE PROPOSED PROGRAM; IF PROPOSAL IS TO DEEPEN OR PLUG BACK, GIVE DATA ON PRESENT PRODUCTIVE ZONE AND PROPOSED NEW PRODUCTIVE ZONE. GIVE BLOWOUT PREVENTER PROGRAM, IF ANY.

I hereby certify that the information above is true and complete to the best of my knowledge and belief.

Signed Donald Craig Title Agent Date 1/5/81

(This space for State Use)

APPROVED BY W.A. Grossett TITLE SUPERVISOR, DISTRICT 1 DATE 1-7-81

CONDITIONS OF APPROVAL, IF ANY:

NEW MEXICO OIL CONSERVATION WELL LOCATION AND ACREAGE DEDICATION PLAT

Supersedes U-128
Effective 1-1-65

All distances must be from the outer boundaries of the Section.

Operator Sel-Co, Inc.		Lease Moonshine 7		Well No. 7-1
Init Letter F	Section 7	Township 9 South	Range 29 East	County Chaves
Actual Postage Location of Well:				
1980	feet from the West line and	1980	feet from the North line	Dedicated Acreage:
Sound Level Elev. 3915.8	Producing Formation San Andres	Pool Twin Lakes - Wildcat	SE/4NW/4	40 Acres

1. Outline the acreage dedicated to the subject well by colored pencil or hatchure marks on the plat below.

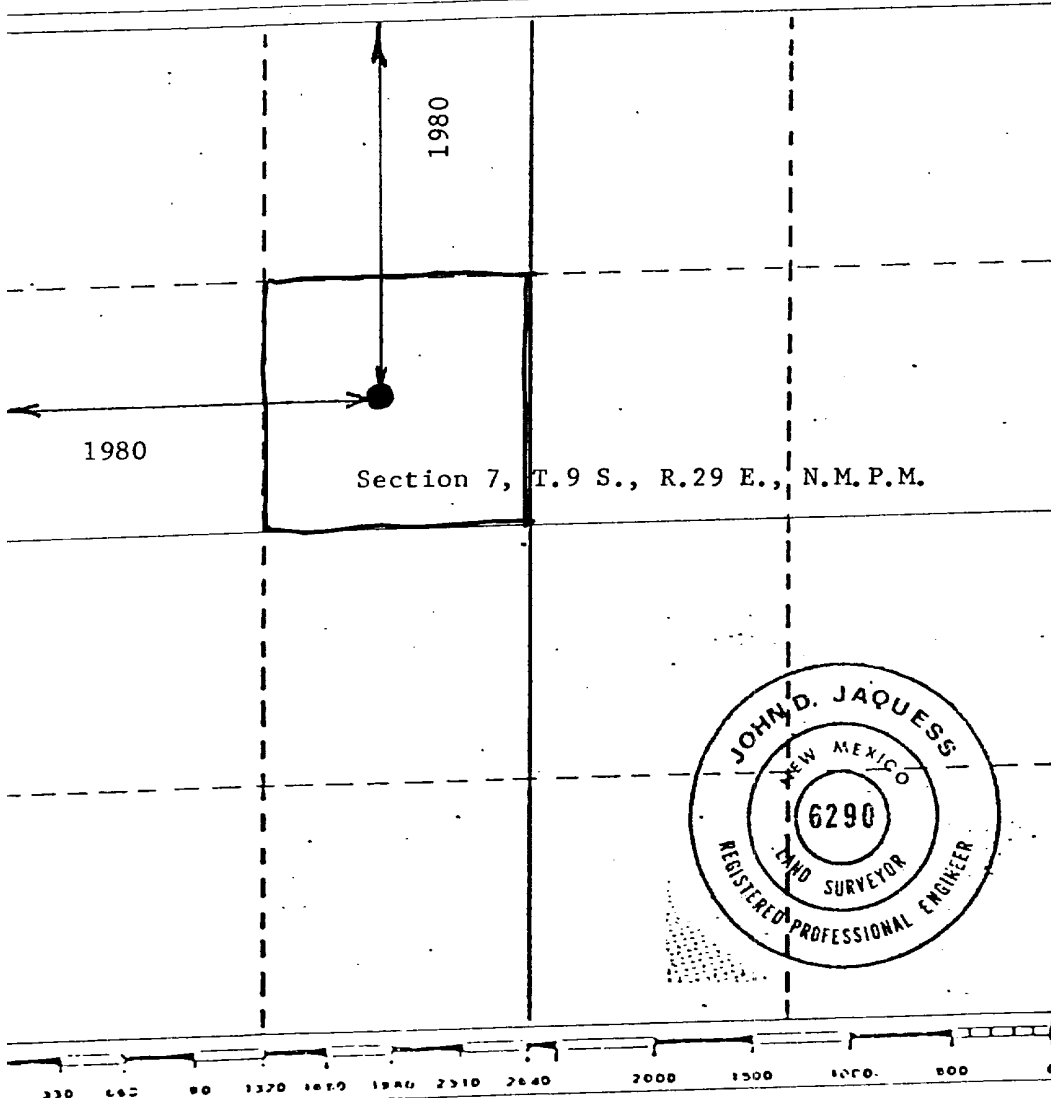
2. If more than one lease is dedicated to the well, outline each and identify the ownership thereof (both as to working interest and royalty). Moon Co. Trust (3/4) Donald Winston (1/32) J. Wyman & Winston (1/64) Charles Kelly (1/128) Pauline Parker (1/64) J.T. Wyman (1/64) Marshall & Winston (1/32) Murray McKinnon (1/128) Tenneco Oil Co. (1/8)
3. If more than one lease of different ownership is dedicated to the well, have the interests of all owners been consolidated by communitization, unitization, force-pooling, etc?

Tenneco - Possible force pooling

☐ Yes ☐ No If answer is "yes," type of consolidation _____

If answer is "no," list the owners and tract descriptions which have actually been consolidated. (Use reverse side of this form if necessary.) _____

No allowable will be assigned to the well until all interests have been consolidated (by communitization, unitization, force-pooling, or otherwise) or until a non-standard unit, eliminating such interests, has been approved by the Commission.



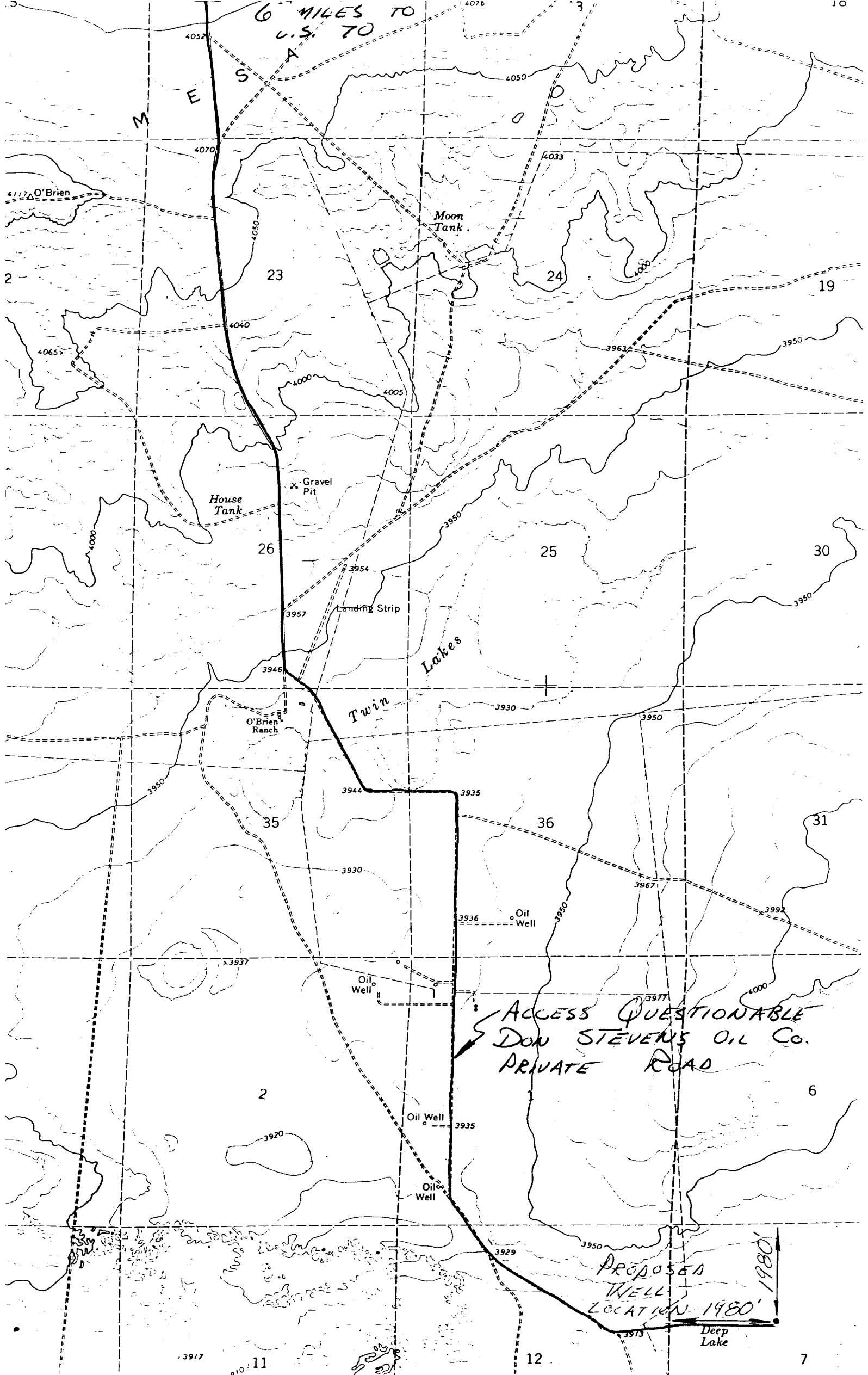
CERTIFICATION

I hereby certify that the information contained herein is true and complete to the best of my knowledge and belief.

Name
Stephen G. Sell
Position
President
Company
SelCo, Inc.
Date
November 24, 1980

I hereby certify that the well location shown on this plat was plotted from field notes of actual surveys made by me or under my supervision, and that the same is true and correct to the best of my knowledge and belief.

Date Surveyed
Nov. 7, 1980
Registered Professional Engineer and/or Land Surveyor
John D. Jaquess, P.E. & L.S.
Certificate No.
6290



6 MILES TO
U.S. 70

M
E
S
A

Moon Tank

House Tank

Gravel Pit

Landing Strip

O'Brien Ranch

Twin Lakes

ACCESS QUESTIONABLE
DON STEVENS OIL CO.
PRIVATE ROAD

PROPOSED
WELL
LOCATION 1980'

Deep Lake