

UNITED STATES
DEPARTMENT OF THE INTERIOR
GEOLOGICAL SURVEYN.M.O.C.D. COPY
(For instructions, see
reverse side)

30-005-60968

APPLICATION FOR PERMIT TO DRILL, DEEPEN, OR PLUG BACK

1a. TYPE OF WORK

DRILL ☒DEEPEN ☐PLUG BACK ☐

b. TYPE OF WELL

OIL
WELL ☐GAS
WELL ☒

OTHER

SINGLE
ZONE ☐MULTIPLE
ZONE ☐

2. NAME OF OPERATOR

Yates Petroleum Corporation ✓

3. ADDRESS OF OPERATOR

207 South 4th Street, Artesia, New Mexico 88210

4. LOCATION OF WELL (Report location clearly and in accordance with any State requirements.)*

At surface

1980' FWL & 660' FNL

At proposed prod. zone

same

14. DISTANCE IN MILES AND DIRECTION FROM NEAREST TOWN OR POST OFFICE*

Approximately 29 miles N NE of Roswell, NM

15. DISTANCE FROM PROPOSED*

LOCATION TO NEAREST

PROPERTY OR LEASE LINE, FT.

(Also to nearest drlg. unit line, if any)

1980'

18. DISTANCE FROM PROPOSED LOCATION*

TO NEAREST WELL, DRILLING, COMPLETED,
OR APPLIED FOR, ON THIS LEASE, FT.

19. PROPOSED DEPTH

4350'

21. ELEVATIONS (Show whether DF, RT, GR, etc.)

3836.5

23.

PROPOSED CASING AND CEMENTING PROGRAM

SIZE OF HOLE	SIZE OF CASING	WEIGHT PER FOOT	SETTING DEPTH	QUANTITY OF CEMENT
12 1/4"	10 3/4"	32.75# K-55	Approx. 400'	circulate
9 1/2"	7"	20# K-55	Approx. 1300'	circulate
6 1/8"	4 1/2"	10.5#	TD	

We propose to drill and test the granite wash and intermediate formations. Approximately 350' of surface casing will be set and cement circulated to shut off gravel and casing. Casing will be set 100' below the water zone. If commercial, 4 1/2" production casing will be run and cemented with an adequate cover, perforate and stimulate as needed for production.

MUD PROGRAM: FW gel and LCM to 1300, Brine KCL to 3200' KCL Drispak & Search to 4300', flosal-dirspak KCL to TD. NW 10-10.2, Vis 34-39, WL 14

BOP PROGRAM: BOP's will be installed on 7" casing and tested daily

GAS NOT DEDICATED.

IN ABOVE SPACE DESCRIBE PROPOSED PROGRAM: If proposal is to deepen or plug back, give data on present productive zone and proposed new productive zone. If proposal is to drill or deepen directionally, give pertinent data on subsurface locations and measured and true vertical depths. Give blowout preventer program, if any.

24.

SIGNED

TITLE

Reg. Manager

DATE 5-11-81

(This space for Federal or State office use)

PERMIT NO.

APPROVAL DATE

(Orig. Sgd.) GEORGE H. STEWART

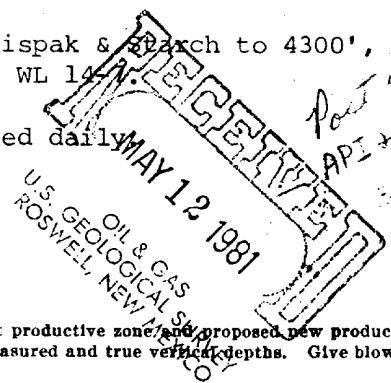
APPROVED BY

TITLE

DATE

CONDITIONS OF APPROVAL, IF ANY

FOR
JAMES A. CRANAN
DISTRICT SUPERVISOR



W MEXICO OIL CONSERVATION COMM. ON
WELL LOCATION AND ACREAGE DEDICATION PLAT

Form C-102
Supersedes C-128
Effective 1-1-65

All distances must be from the outer boundaries of the Section.

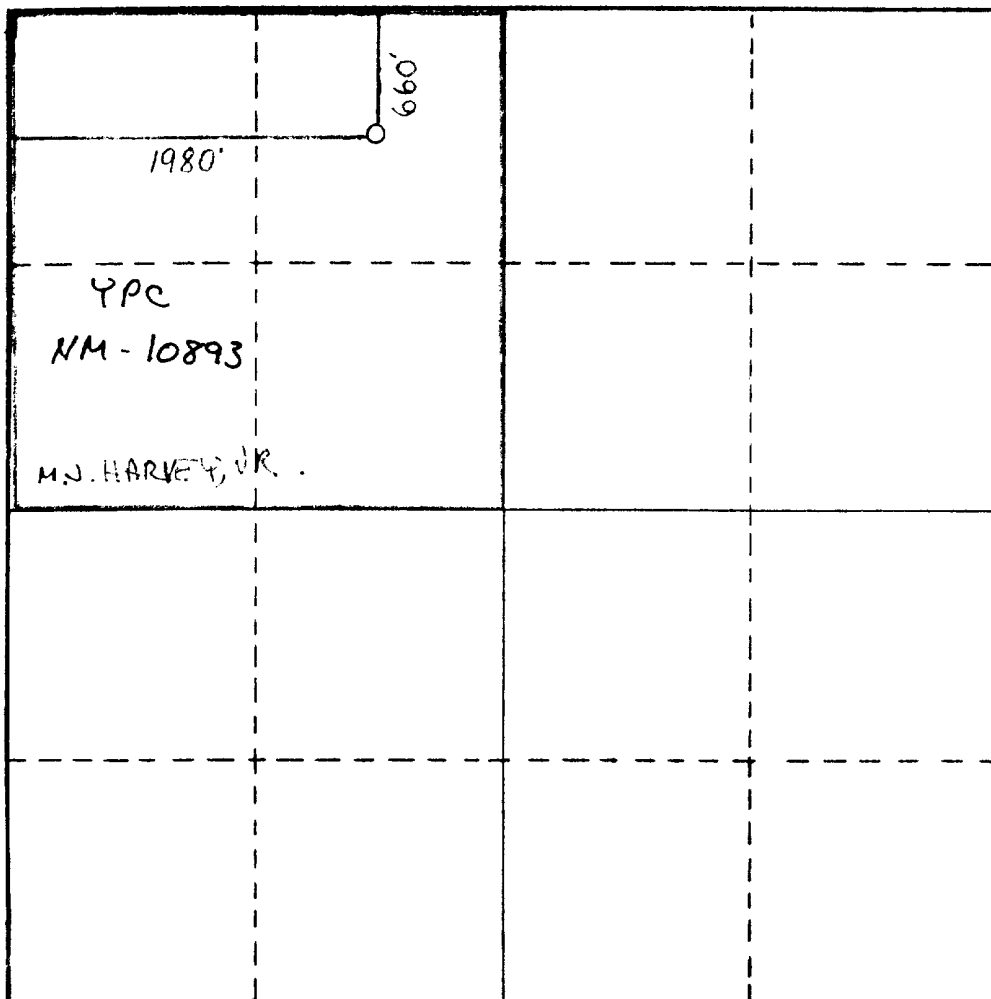
Operator YATES PETROLEUM CORPORATION			Lease GODFREY MP FED.		Well No. 3
Unit Letter C	Section 15	Township 7	Range 25	County CHAVES	
Actual Footage Location of Well: 1980' feet from the WEST line and 660' feet from the NORTH line					
Ground Level Elev. 3836.5	Producing Formation ABO	Pool UNITS ABO		Dedicated Acreage: 160 Acres	

1. Outline the acreage dedicated to the subject well by colored pencil or hachure marks on the plat below.
2. If more than one lease is dedicated to the well, outline each and identify the ownership thereof (both as to working interest and royalty).
3. If more than one lease of different ownership is dedicated to the well, have the interests of all owners been consolidated by communitization, unitization, force-pooling, etc?

☐ Yes ☐ No If answer is "yes," type of consolidation _____

If answer is "no," list the owners and tract descriptions which have actually been consolidated. (Use reverse side of this form if necessary.) _____

No allowable will be assigned to the well until all interests have been consolidated (by communitization, unitization, forced-pooling, or otherwise) or until a non-standard unit, eliminating such interests, has been approved by the Commission.



CERTIFICATION

I hereby certify that the information contained herein is true and complete to the best of my knowledge and belief.

Gliserio Rodriguez
Name

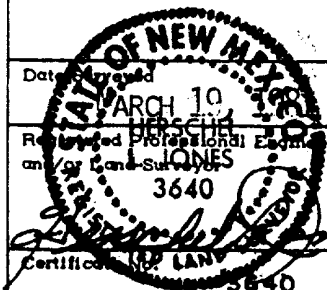
GLISERIO RODRIGUEZ
Position

GEOGRAPHER

Company
YATES PETROLEUM CORP

Date
4-2-81

I hereby certify that the well location shown on this plat was plotted from field notes of actual surveys made by me or under my supervision, and that the same is true and correct to the best of my knowledge and belief.



Yates Petroleum Corporation
Godfrey "MP" Federal #3
1980' FWL & 660' FNL
Section 15-T7s-R25e
Chaves County, New Mexico

In conjunction with Form 9-331C. Application for Permit to Drill subject well, Yates Petroleum Corporation submits the following ten items of pertinent information in accordance with USGS requirements:

1. The geologic surface formation is sandy residuum.
2. The estimate tops of geologic markers are as follows:

San Andres	552'	Wolfcamp	4262'
Gloriata	1470'	TD	4350'
Abo	3562		
3. The estimated depths at which anticipated water, oil, or gas formations are expected to be encountered:

Water: Approximately 250'

Gas: 3580'
4. Proposed Casing Program: See Form 9-331C.
5. Pressure Control Equipment: See Form 9-331C and Exhibit B.
6. Mud Program: See Form 9-331C.
7. Auxiliary Equipment: Kelly Cock; pit level indicators and flow sensor equipment; sub with full-opening valve on floor, drill pipe connection.
8. Testing, Logging and Coring Program:

Samples: Surface casing to T.D.

DST's: As Warranted

Logging: Intermeidate casing to T.D.

Coring: CNL-FDC T.D. to casing with GR-CNL on to surface and DLL from T.D. to casing.
9. No abnormal pressures to temperatures are anticipated.
10. Anticipated starting date: As sson as possible after approval.

MULTI-POINT SURFACE USE AND OPERATIONS PLAN

Yates Petroleum Corporation
Godfrey "MP" Federal #3
Section 15-T7s-R25e
1980' FWL & 660' FNL
(Developmental Well)

This plan is submitted with Form 9-331C, Application for Permit to Drill, covering the above described well. The purpose of this plan is to describe the location of the proposed well, the proposed construction activities and operations plan, the magnitude of surface disturbance involved, and the procedures to be followed in rehabilitating the surface after completion of the operations, so that a complete appraisal can be made of the environmental effect associated with the operation.

1. EXISTING ROADS.

Exhibit A is a portion of a BLM map showing the well and roads in the vicinity of the proposed location. The proposed wellsite is located approximately 30 miles NNE of Roswell, New Mexico and the access route to the location is indicated in red and green on Exhibit A.

DIRECTIONS:

1. Proceed north from Roswell on Highway 285 for a distance of approximately 22 miles
2. Turn east for approximately 10 miles and continue NE for 1/3 of a mile.

2. PLANNED ACCESS ROAD.

- A. The ranch road will be upgraded.
- B. The road will be 12 feet in width (driving surface).
- C. The road will be bladed with drainage on one side. Two turnouts will be built
- D. The route of the road is visible as the existing ranch road will be used.

3. LOCATION OF EXISTING WELL.

- A. There is drilling activity within a one-mile radius of the wellsite.

4. LOCATION OF EXISTING AND/OR PROPOSED FACILITIES.

- A. There are no production facilities on this lease at the present time.
- B. In the event that the well is productive, the necessary production facilities will be installed on the drilling pad. If the well is productive oil, a gas or diesel self-contained unit will be used to provide the necessary power. No power will be required if the well is productive of gas.

5. LOCATION AND TYPE OF WATER SUPPLY.

- A. It is planned to drill the proposed well with a fresh water system. The water will be obtained from commercial sources and will be hauled to the location by truck over the existing and proposed roads shown in Exhibit A.

6. SOURCE OF CONSTRUCTION MATERIALS.

- A. There is no existing pit of construction material so none will be used.

7. METHODS OF HANDLING WASTE DISPOSAL.

- A. Drill cuttings will be disposed of in the reserve pits.
- B. Drilling fluids will be allowed to evaporate in the reserve pits until the pits are dry.
- C. Water produced during operations will be collected in tanks until hauled to an approved disposal system, or separate disposal application will be submitted to the USGS for appropriate approval.
- D. Oil produced during operation will be stored in tanks until sold.
- E. Current laws and regulations pertaining to the disposal of human waste will be complied with.
- F. Trash, waste paper, garbage and junk will be buried in a separate trash pit and covered with a minimum of 24 inches dirt. All waste material will be contained of prevent scattering by the wind.
- G. All trash and debris will be buried or removed from the wellsite within 30 days after finishing drilling and/or completion operations.

8. ANCILLARY FACILITIES.

- A. None required.

9. WELLSITE LAYOUT.

- A. Exhibit C shows the relative location and dimensions of the well pad, the reserve pits, etc.
- B. The location surface is almost flat but some cut and fill will be required.
- C. The reserve pits will be plastic lined.
- D. A 400' X 400' area has been staked and flagged.

10. PLANS FOR RESTORATION OF THE SURFACE.

- A. After finishing drilling and/or completion operations, all equipment and other material not needed for further operations will be removed. The location will be cleaned of all trash and junk to leave the wellsite in as aesthetically pleasing a condition as possible.

- B. Unguarded pits, if any, containing fluids will be fenced until they have dried and leveled.
- C. If the proposed well is non-productive, all rehabilitation and/or vegetation requirements of the USGS and the BLM will be complied with and will be accomplished as expeditiously as possible. All pits will be filled leveled within 90 days after abandonment.

11. OTHER INFORMATION.

- A. Topography: The land surface in the vicinity of the wellsite is all flat. The immediate area of the wellsite is discussed above in paragraph 9B.
- B. Flora and Fauna: The vegetation cover on wellsite consists of mesquite and miscellaneous desert growth. No wildlife was observed, but the wildlife in the area probably includes those typical of semi-arid desert land. The area is used for cattle grazing.
- C. The Pecos River is approximately 4 miles. Five Mile Draw is approximately 2.0 miles north of drill site.
- D. There are no inhabited dwellings in the vicinity of the proposed well.
- E. Surface Ownership: The wellsite is on federal minerals and surface.
- F. There is no evidence of any archeological, historical or cultural sites in the area.

12. OPERATOR'S REPRESENTATIVE.

- A. The field representative responsible for assuring compliance with the approved surface use plan is:

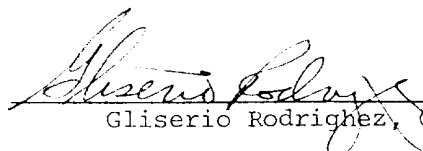
Gliserio "Rod" Rodriguez or Cy Cowan
Yates Petroleum Corporation
207 South 4th Street
Artesia, New Mexico 88210
(505) 746-3558

13. CERTIFICATION.

I hereby certify that I, or persons under my direct supervision, have inspected the proposed drillsite and access route, that I am familiar with the conditions which presently exist; that the statements made in this plan are to the best of my knowledge, true and correct; and, that the work associated with the operations propose herein will be performed by Yates Petroleum Company and its contractors and subcontractors in conformity with this plan and the terms and conditions under which it is approved.

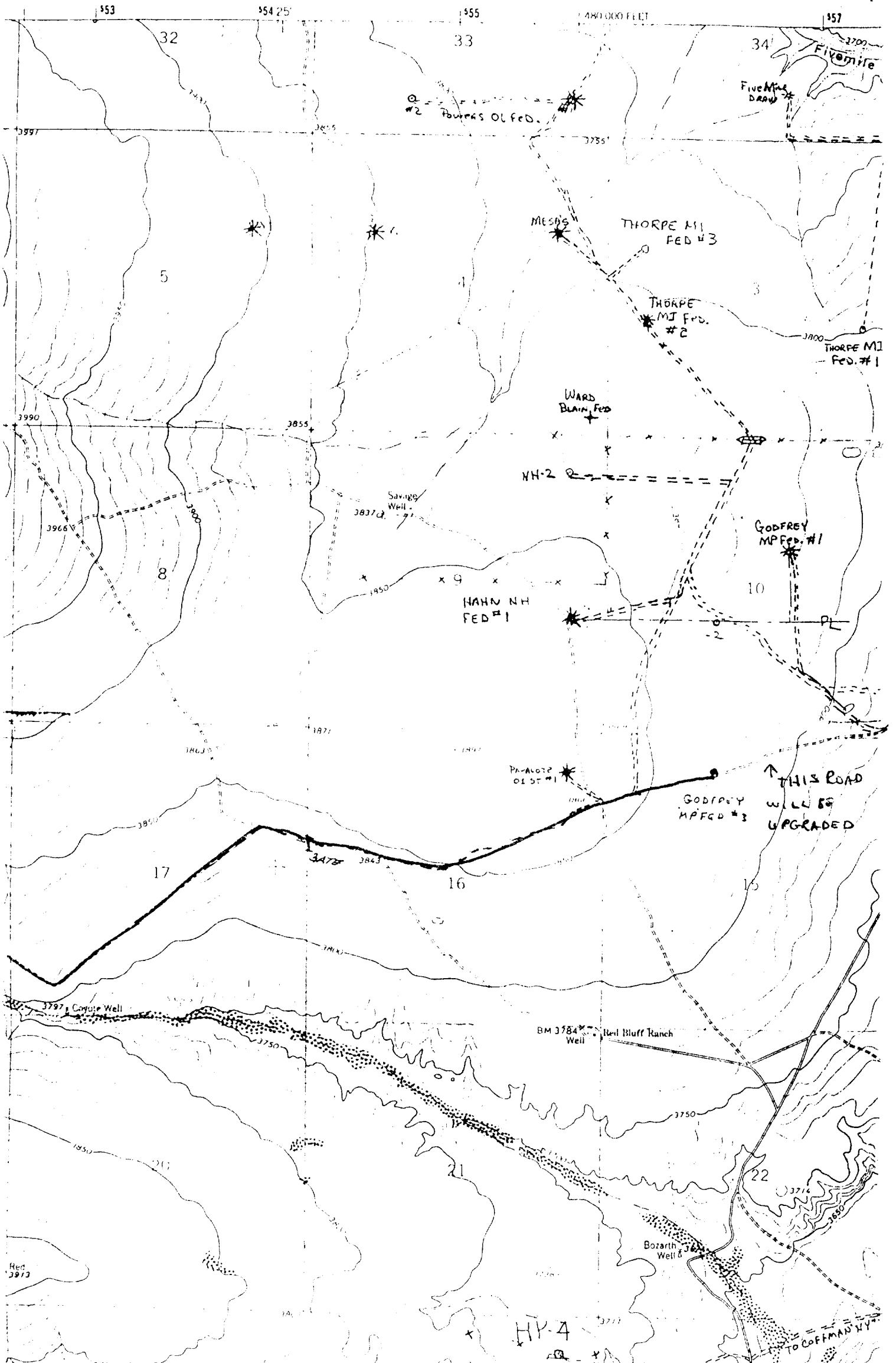
5-11-81

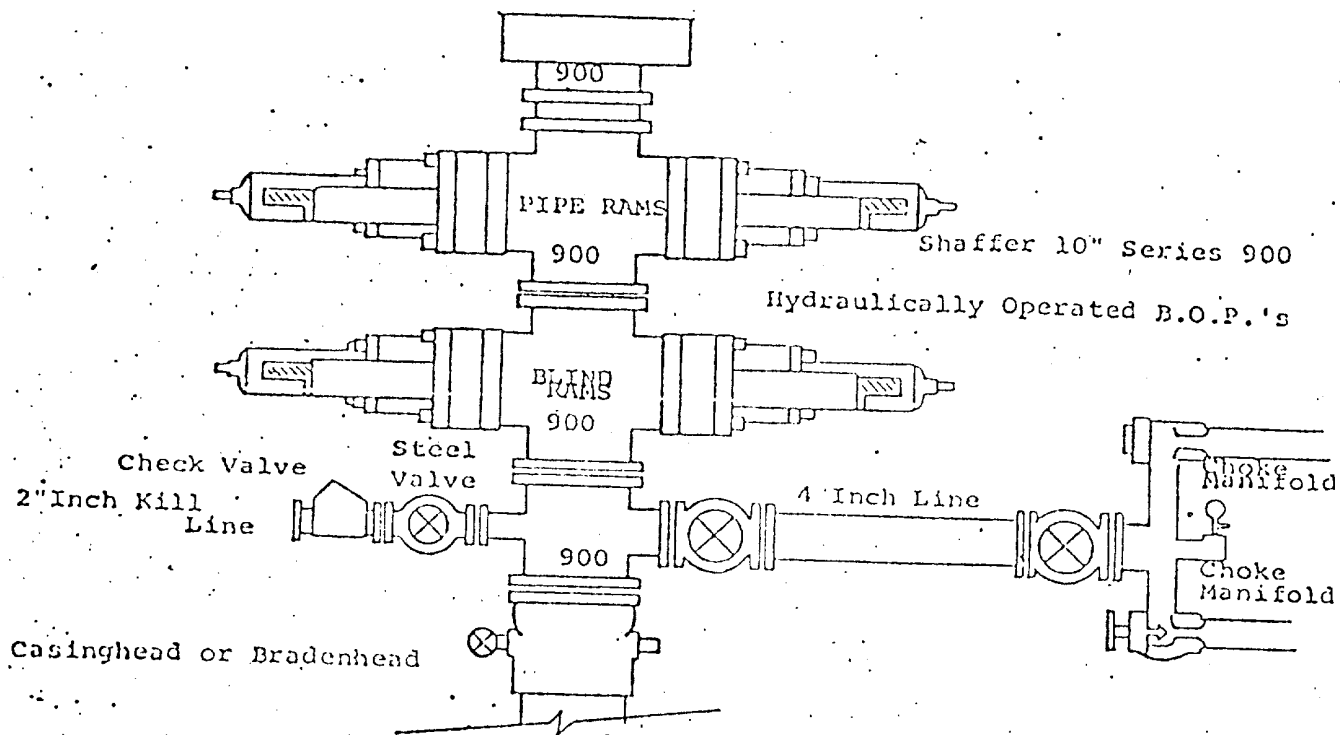
Date


Gliserio Rodriguez, Geographer

Yates Petroleum Corp
Godfrey "mp" 7ed #3
Sec 15 T5 25 E
1980' FWL + 660 FNL
Chaves County
NM
EXHIBIT A

COYOTE DRAW QU
NEW MEXICO-CH.
7.5 MINUTE SERIES (T





THE FOLLOWING CONSTITUTE MINIMUM BLOWOUT PREVENTER REQUIREMENTS

1. All preventers to be hydraulically operated with secondary manual controls installed prior to drilling out from under casing.
2. Choke outlet to be a minimum of 4" diameter.
3. Kill line to be of all steel construction of 2" minimum diameter.
4. All connections from operating manifolds to preventers to be all steel.
5. The available closing pressure shall be at least 15% in excess of that required with sufficient volume to operate the B.O.P.'s.
6. All connections to and from preventer to have a pressure rating equivalent to that of the B.O.P.'s.
7. Inside blowout preventer to be available on rig floor.
8. Operating controls located a safe distance from the rig floor.
9. Hole must be kept filled on trips below intermediate casing. Operator not responsible for blowouts resulting from not keeping hole full.
10. D. P. float must be installed and used below zone of first gas intrusion.

YATES PETROLEUM CORPORATION

