

30-005-60978

UNITED STATES
DEPARTMENT OF THE INTERIOR
GEOLOGICAL SURVEY

APPLICATION FOR PERMIT TO DRILL, DEEPEN, OR PLUG BACK

1a. TYPE OF WORK

DRILL ☒DEEPEN ☐PLUG BACK ☐

b. TYPE OF WELL

OIL
WELL ☐GAS
WELL ☒

OTHER

SINGLE
ZONE ☐MULTIPLE
ZONE ☐

2. NAME OF OPERATOR

McClellan Oil Corporation

3. ADDRESS OF OPERATOR

Post Office Drawer 730, Roswell, New Mexico 88201

4. LOCATION OF WELL (Report location clearly and in accordance with any State requirements.)*

At surface

660' FSL & 660' FEL

JUN 2 1981

At proposed prod. zone

same

O. C. D.

14. DISTANCE IN MILES AND DIRECTION FROM NEAREST TOWN OR POST OFFICE*

ARTESIA, OFFICE

12 miles North and 4 miles East of Roswell, NM

15. DISTANCE FROM PROPOSED*

LOCATION TO NEAREST
PROPERTY OR LEASE LINE, FT.
(Also to nearest drlg. unit line, if any)

660'

16. NO. OF ACRES IN LEASE

1280

17. NO. OF ACRES ASSIGNED
TO THIS WELL

160

18. DISTANCE FROM PROPOSED LOCATION*

TO NEAREST WELL, DRILLING, COMPLETED,
OR APPLIED FOR, ON THIS LEASE, FT.

n/a

19. PROPOSED DEPTH

4000'

20. ROTARY OR CABLE TOOLS

Rotary

21. ELEVATIONS (Show whether DF, RT, GR, etc.)

3698' G.L.

22. APPROX. DATE WORK WILL START*

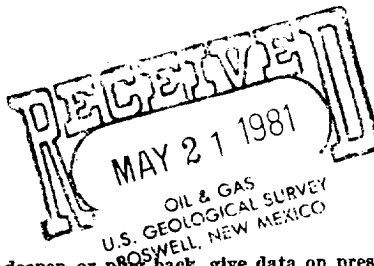
6/01/81

23. PROPOSED CASING AND CEMENTING PROGRAM

SIZE OF HOLE	SIZE OF CASING	WEIGHT PER FOOT	SETTING DEPTH	QUANTITY OF CEMENT
17-1/2"	13-3/8"	48# J-55	450'	425 sx circulate
7-7/8"	4-1/2"	10.5# J-55	T.D.	300 sx circulate

We propose to drill and test the Abo formation. Approximately 450' of surface casing will be set and cement circulated to shut off gravel and caving. If needed (due to lost circulation), 8-5/8" casing will be run to approximately 1360' and cemented back into the 13-3/8" casing. If commercial, production casing will be run and cemented with adequate cover, perforate and stimulate as needed for production.

Gas is not dedicated.



IN ABOVE SPACE DESCRIBE PROPOSED PROGRAM: If proposal is to deepen or plug back, give data on present productive zone and proposed new productive zone. If proposal is to drill or deepen directionally, give pertinent data on subsurface locations and measured and true vertical depths. Give blowout preventer program, if any.

24.

SIGNED

TITLE

Engineer

DATE

May 18, 1981

(This space for Federal or State office use)

PERMIT NO.

APPROVAL DATE

APPROVED BY

TITLE

DATE

CONDITIONS OF APPROVAL, IF ANY:

DISTRICT SUPERVISOR

All distances must be from the outer boundaries of the Section.

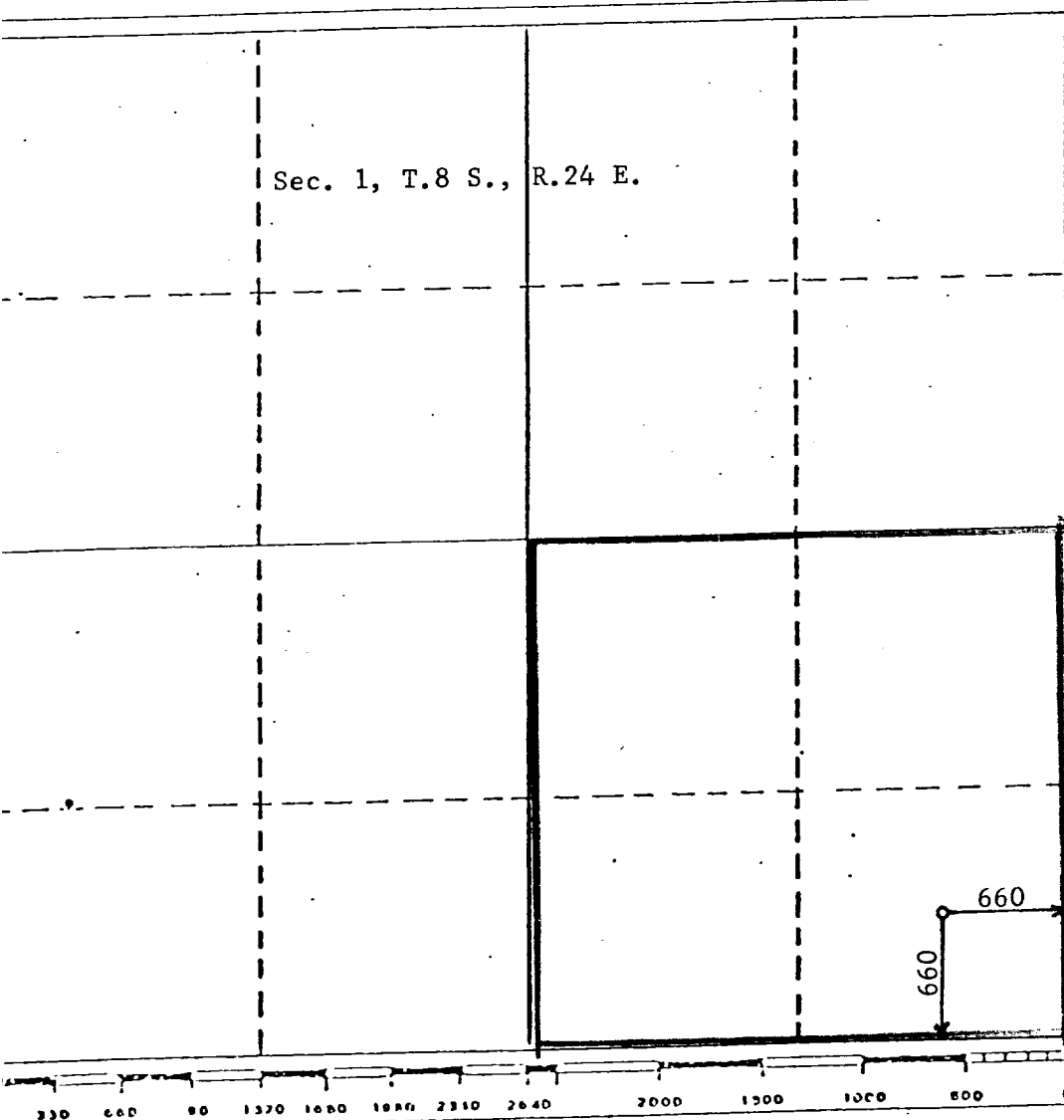
Operator McClellan Oil Corp.		Lease Coyote Draw Federal		Well No. #2
Well Letter P	Section 1	Township 8 South	Range 24 East	County Chaves
Actual Footage Location of Well: 660 feet from the South line and 660 feet from the East line				
Sound Level Elev. 3698	Producing Formation Abo	Pool Wildcat	Dedicated Acreage: 160 Acres	

1. Outline the acreage dedicated to the subject well by colored pencil or hachure marks on the plat below.
2. If more than one lease is dedicated to the well, outline each and identify the ownership thereof (both as to working interest and royalty).
3. If more than one lease of different ownership is dedicated to the well, have the interests of all owners been consolidated by communitization, unitization, force-pooling, etc?

☐ Yes ☐ No If answer is "yes," type of consolidation _____

If answer is "no," list the owners and tract descriptions which have actually been consolidated. (Use reverse side of this form if necessary.) _____

No allowable will be assigned to the well until all interests have been consolidated (by communitization, unitization, forced-pooling, or otherwise) or until a non-standard unit, eliminating such interests, has been approved by the Division.



CERTIFICATION

I hereby certify that the information contained herein is true and complete to the best of my knowledge and belief.

Paul Ragsdale

Name
Paul Ragsdale
Position
Engineer
Company
McClellan Oil Corporation
Date
May 18, 1981

I hereby certify that the well location shown on this plat was plotted from field notes of actual surveys made by me or under my supervision, and that the same is true and correct to the best of my knowledge and belief.

JOHN D. JAQUESS
NEW MEXICO
Date Surveyed
May 11, 1981
Registered Professional Engineer
and/or Professional Surveyor
John D. Jaquess, P.E. & L.S.
Certificate No.
6290