

STATE OF NEW MEXICO  
ENERGY AND MINERALS DEPARTMENT

LAND CONSERVATION DIVISION

P. O. BOX 2088

SANTA FE, NEW MEXICO 87501

RECEIVED

JUN 1 8 1981

O. C. D.

ARTESIA, OFFICE

30-005-60788

Form C-101  
Revised 10-1-78

|                        |   |
|------------------------|---|
| NO. OF COPIES RECEIVED |   |
| DISTRIBUTION           |   |
| SANTA FE               | 1 |
| FILE                   | 1 |
| U.S.G.S.               | 2 |
| LAND OFFICE            | 1 |
| OPERATOR               | 1 |

APPLICATION FOR PERMIT TO DRILL, DEEPEN, OR PLUG BACK

Type of Work

Type of Well DRILL ☒ DEEPEN ☐ PLUG BACK ☐  
OIL WELL ☐ GAS WELL ☒ OTHER ☐ SINGLE ZONE ☐ MULTIPLE ZONE ☐

Name of Operator

Yates Petroleum Corporation

Address of Operator

207 South 4th Street, Artesia, New Mexico 88210

Location of Well

UNIT LETTER M LOCATED 810' FEET FROM THE South LINE

660 FEET FROM THE West LINE OF SEC. 17 TWP. 7s RGE. 25e NMPM

5A. Indicate Type of Lease

STATE ☒ FEE ☐

5. State Oil & Gas Lease No.  
LG-4354

7. Unit Agreement Name

8. Farm or Lease Name

Cockleburr "RD" State

9. Well No.

1

10. Field and Pool, or Wildcat

X Wildcat

12. County

Chaves

19. Proposed Depth

4350' +

15A. Formation

Abo

20. Rotary or C.T.

Rotary

Elevations (Show whether DF, KT, etc.)

3806.2 GL

21A. Kind & Status Plug. Bond

Blanket

21B. Drilling Contractor

LaRue #1

22. Approx. Date Work will start

ASAP

PROPOSED CASING AND CEMENT PROGRAM

| SIZE OF HOLE     | SIZE OF CASING   | WEIGHT PER FOOT | SETTING DEPTH | SACKS OF CEMENT | EST. TOP  |
|------------------|------------------|-----------------|---------------|-----------------|-----------|
| 17 1/2"          | 13 3/8"          | 48# J-55        | Approx. 900'  | 800 sx.         | circulate |
| 12 1/2"          | 8 5/8"           | 24# J-55        | Approx. 1400' | 800 sx.         | circulate |
| 8 3/4" or 7 7/8" | 5 1/2" or 4 1/4" | 15.5 or 10.5#   | TD 4300'      | 300 sx.         |           |

We propose to drill and test the Abo and intermediate formations. Approximately 400' of surface casing will be set and cement circulated to shut off gravel and caving. Casing will be set approximately 100' below the Roswell Water Basin (250' - 300'). Intermediate casing will be run and if commercial, 5 1/2 or 4 1/2 production casing will be run and cemented with adequate over, perforated and stimulated as needed for production. 8 5/8" casing will be run only if hole conditions require it.

MUD PROGRAM: FW gel and LCM to 1400', Brine KCL to 3250' KCL Drispak and Starch to TD.  
MW 10-10.2, Vis. 34-29, WL 14-7.

BOP PROGRAM: BOP's will be installed on 8 5/8" casing and tested daily.

GAS NOT DEDICATED.

This location was moved 100' to the north to get it off the country road.

APPROVAL VALID FOR 180 DAYS  
PERMIT EXPIRES 12-17-81  
UNLESS DRILLING UNDERWAY

BOVE SPACE DESCRIBE PROPOSED PROGRAM: IF PROPOSAL IS TO DEEPEN OR PLUG BACK, GIVE DATA ON PRESENT PRODUCTIVE ZONE AND PROPOSED NEW PRODUCTIVE ZONE. GIVE BLOWOUT PREVENTER PROGRAM, IF ANY.

I hereby certify that the information above is true and complete to the best of my knowledge and belief.

Glenn Polinger Title Geographer Date 6-8-81

(This space for State Use)

APPROVED BY W.A. Gressett TITLE SUPERVISOR, DISTRICT II DATE JUN 17 1981

CONDITIONS OF APPROVAL, IF ANY:

Cement must be circulated to surface behind 13 3/8" casing

Notify N.M.O.C.C. in sufficient time to witness cementing the 13 3/8" casing

NEW MEXICO OIL CONSERVATION COMMISSION  
WELL LOCATION AND ACREAGE DEDICATION PLAT

Form C-102  
Supersedes C-128  
Effective 1-1-65

All distances must be from the outer boundaries of the Section.

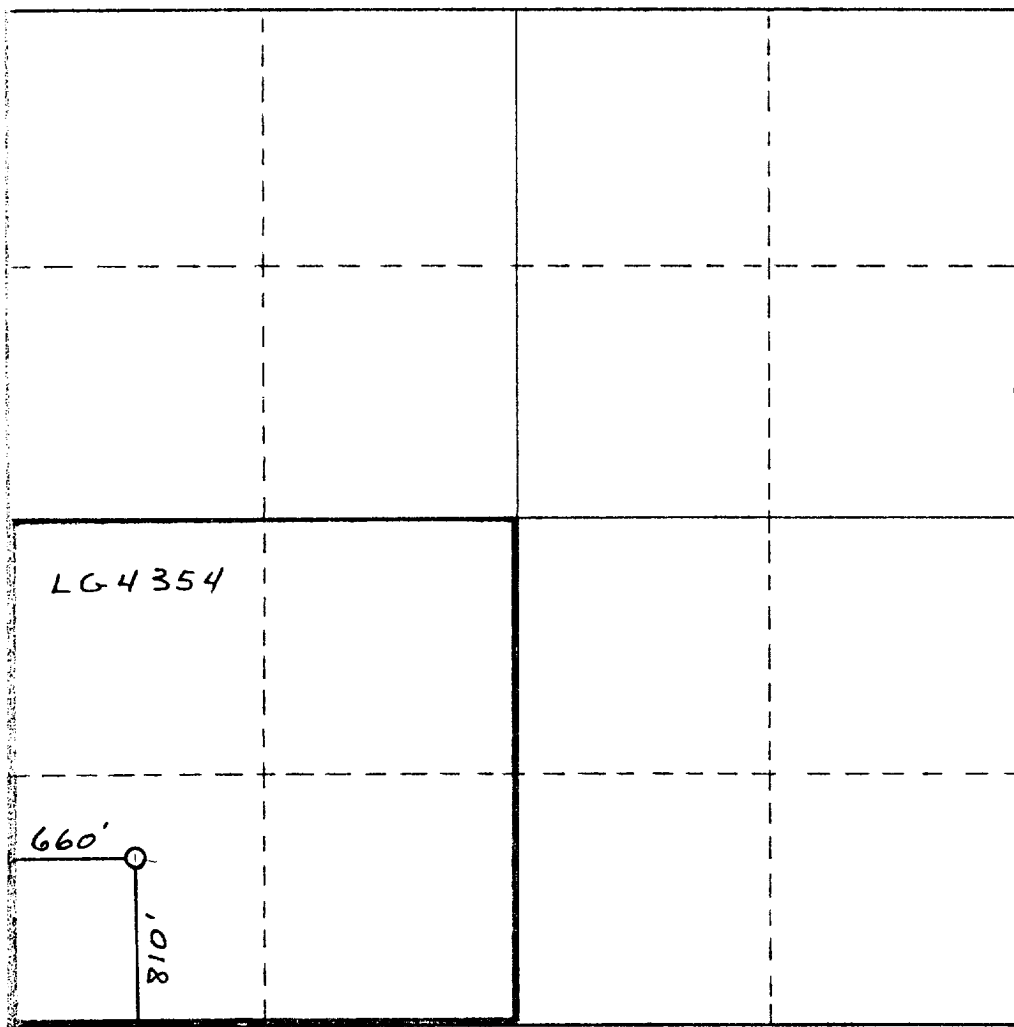
|  |                                   |                            |                                       |                         |  |
|--|-----------------------------------|----------------------------|---------------------------------------|-------------------------|--|
| Operator<br><b>Yates Petroleum Corporation</b>   |                                   |                            | Lease<br><b>Cockleburr "RD" State</b> |                         | Well No.<br><b>1</b>                   |
| Unit Letter<br><b>AM</b>   | Section<br><b>17</b>              | Township<br><b>7 South</b> | Range<br><b>25 East</b>               | County<br><b>Chaves</b> |  |
| Actual Footage Location of Well:<br><b>810'</b> feet from the <b>South</b> line and <b>660'</b> feet from the <b>West</b> line |                                   |                            |                                       |                         |  |
| Ground Level Elev:<br><b>3806.2</b>  | Producing Formation<br><b>Abo</b> |                            | Pool<br><b>Undes. Abo</b>             |                         | Dedicated Acreage:<br><b>160</b> Acres |

1. Outline the acreage dedicated to the subject well by colored pencil or hachure marks on the plat below.
2. If more than one lease is dedicated to the well, outline each and identify the ownership thereof (both as to working interest and royalty).
3. If more than one lease of different ownership is dedicated to the well, have the interests of all owners been consolidated by communitization, unitization, force-pooling, etc?

☐ Yes ☐ No If answer is "yes," type of consolidation \_\_\_\_\_

If answer is "no," list the owners and tract descriptions which have actually been consolidated. (Use reverse side of this form if necessary.) \_\_\_\_\_

No allowable will be assigned to the well until all interests have been consolidated (by communitization, unitization, forced-pooling, or otherwise) or until a non-standard unit, eliminating such interests, has been approved by the Commission.



**CERTIFICATION**

I hereby certify that the information contained herein is true and complete to the best of my knowledge and belief.

*Gliserio Rodriguez*  
Name

**Gliserio Rodriguez**

Position

**Geographer**

Company

**Yates Petroleum Corporation**

Date

**6/17/81**

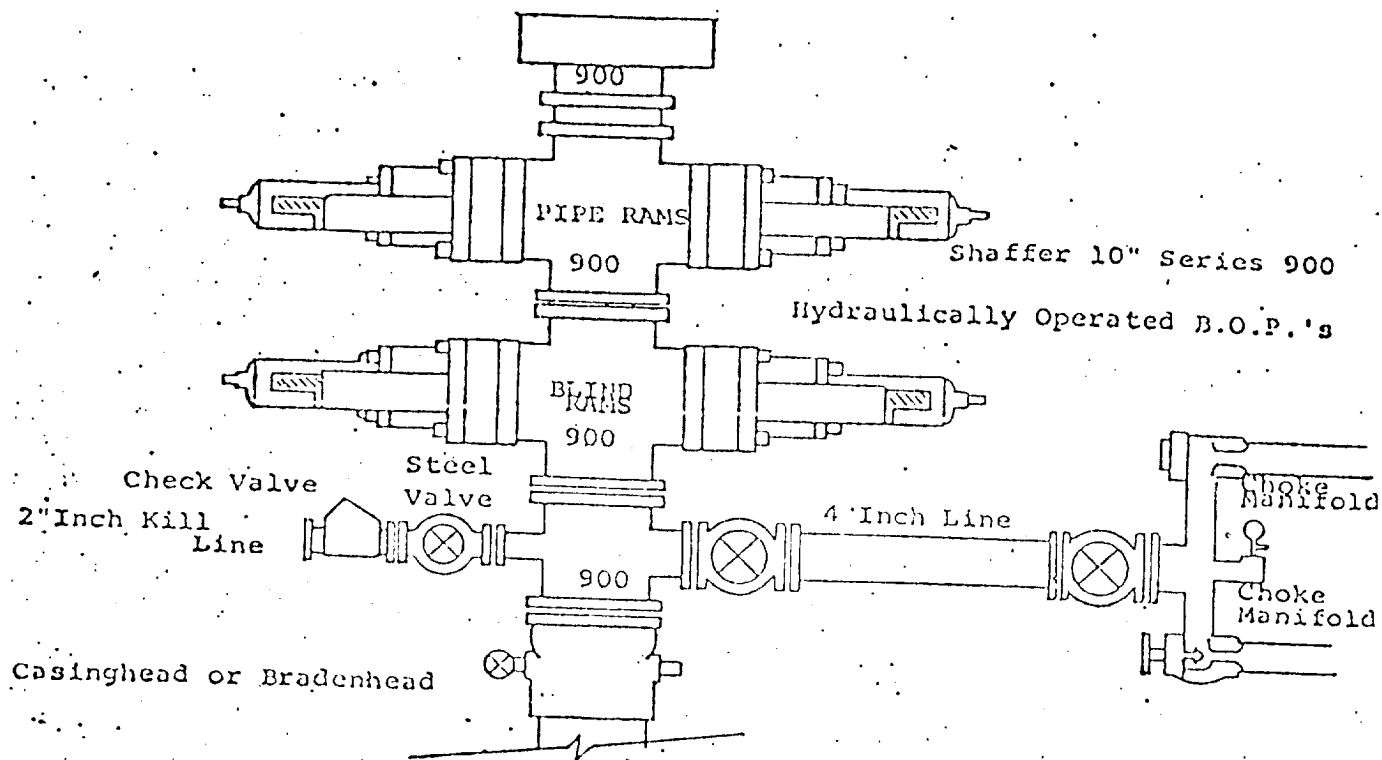
I hereby certify that the well location shown on this plat was plotted from field notes of actual surveys made by me or under my supervision, and that the same is true and correct to the best of my knowledge and belief.

Refer to original plat

Date Surveyed

Registered Professional Engineer  
and/or Land Surveyor

Certificate No.



THE FOLLOWING CONSTITUTE MINIMUM BLOWOUT PREVENTER REQUIREMENTS

1. All preventers to be hydraulically operated with secondary manual controls installed prior to drilling out from under casing.
2. Choke outlet to be a minimum of 4" diameter.
3. Kill line to be of all steel construction of 2" minimum diameter.
4. All connections from operating manifolds to preventers to be all steel. hole or tube a minimum of one inch in diameter.
5. The available closing pressure shall be at least 15% in excess of that required with sufficient volume to operate the B.O.P.'s.
6. All connections to and from preventer to have a pressure rating equivalent to that of the B.O.P.'s.
7. Inside blowout preventer to be available on rig floor.
8. Operating controls located a safe distance from the rig floor.
9. Hole must be kept filled on trips below intermediate casing. Operator not responsible for blowouts resulting from not keeping hole full.
10. D. P. float must be installed and used below zone of first gas intrusion.