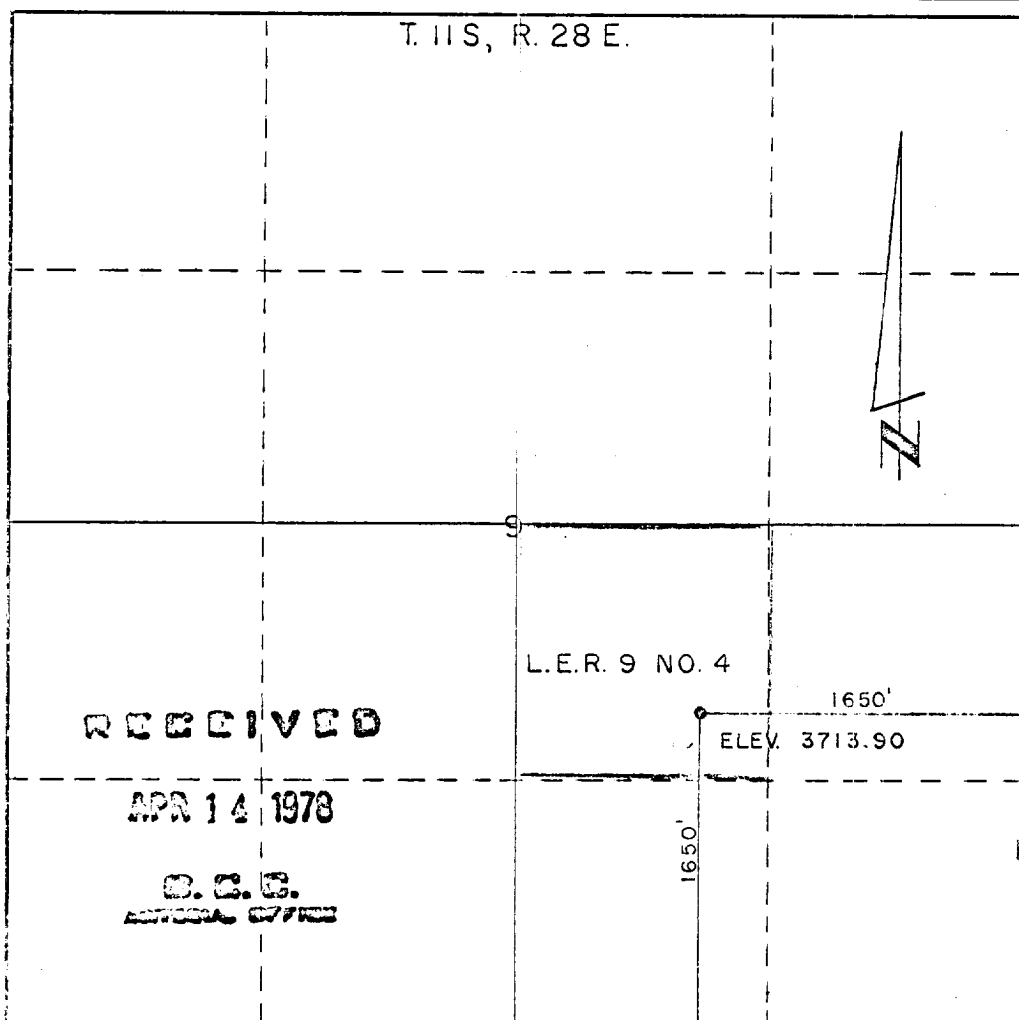


Form C-102  
Supersedes C-128  
Effective 1-1-65

Operator <b>Plains Radio Broadcasting Co.</b>		Lease <b>J E Ranch</b> <b>LER 9</b>		Well No. <b>No. 4</b>	
Unit Letter <b>J A</b>	Section <b>9</b>	Township <b>11S</b>	Range <b>28E</b>	County <b>Chaves</b>	
Actual Footage Location of Well: <b>1650</b> feet from the <b>south</b> line and <b>1650</b> feet from the <b>east</b> line					
Ground Level Elev. <b>3713.90</b>	Producing Formation <b>S.A.</b>		Pool <b>Blair #1 - 100' - 100' SA</b>	Dedicated Acreage: <b>40</b> Acres	

- ☐ Yes    ☐ No    If answer is "yes," type of consolidation \_\_\_\_\_

No allowable will be assigned to the well until all interests have been consolidated (by communitization, unitization, forced-pooling, or otherwise) or until a non-standard unit, eliminating such interests, has been approved by the Commission.



I hereby certify that the information contained herein is true and complete to the best of my knowledge and belief.

Plains Radio Broadcasting Co.

Name  
Owner

Position

Plains Radio Broadcasting Co.

Company

4-11-78

Date \_\_\_\_\_

by Fred Pool, Jr.

I hereby certify that the well location shown on this plat was plotted from field notes of actual surveys made by me or under my supervision and that the same is true and correct to the best of my knowledge and belief.

Date Surveyed \_\_\_\_\_

April 3, 1978

Registered Professional Engineer  
and/or Land Surveyor

Thomas T. Mann, P.E.

Certificate No.

NM No. 277