

STATE OF NEW MEXICO  
ENERGY AND MINERALS DEPARTMENT

OIL CONSERVATION DIVISION

P. O. BOX 2088

SANTA FE, NEW MEXICO 87501

Form C-101  
Revised 10-1-78

NO. OF COPIES RECEIVED	
DISTRIBUTION	
SANTA FE	
FILE	
U.S.G.S.	
LAND OFFICE	
OPERATOR	

5A. Indicate Type of Lease  
STATE ☐ FEE ☒  
5. State Oil & Gas Lease No.

APPLICATION FOR PERMIT TO DRILL, DEEPEN, OR PLUG BACK

1a. Type of Work  
b. Type of Well  
OIL WELL ☐ GAS WELL ☒ OTHER ☐  
DEEPEN ☐ PLUG BACK ☐  
SINGLE ZONE ☐ MULTIPLE ZONE ☐

7. Unit Agreement Name  
8. Form of Lease Name  
Curtis "QR" Com.

2. Name of Operator  
Yates Petroleum Corporation

9. Well No.  
1

3. Address of Operator  
207 South 4th Street, Artesia, NM 88210

10. Field and Pool, or Well Unit  
Abo

4. Location of Well  
UNIT LETTER A LOCATED 660' FEET FROM THE North LINE  
AND 660' FEET FROM THE East LINE OF SEC. 26 TWP. 5S RGE. 24E

11. Locality  
Chaves

12. Elevations (Show whether LH, RH, etc.) 3943.3 GR	21A. Kind & Status Plug. Bond Blanket	12. Proposed Depth 4450'	13A. Formation Abo	13. Rotary or C.C. Rotary
		21B. Drilling Contractor L & M #1	22. Approx. Date Work will start ASAP	

23. PROPOSED CASING AND CEMENT PROGRAM

SIZE OF HOLE	SIZE OF CASING	WEIGHT PER FOOT	SETTING DEPTH	SACKS OF CEMENT	EST. TOP
17 1/2"	13 3/8"	48# J-55	approx. 900'	800 sx	circulate
7 7/8"	5 1/2" or 4 1/2"	15.5# or 10.5#	TD	450 sx	circulate

We propose to drill and test the Abo and intermediate formations. Approximately 900' of surface casing will be set and cement circulated to shut off gravel and caving. If needed (lost circulation) 8 5/8" intermediate casing will be run to 1500' and cement circulated. If commercial, production casing will be run and cemented with adequate cover, perforate and stimulate as needed for production.

MUD PROGRAM: FW gel and LCM to 1500', brine KCL to 3200', KCL drispac and starch to TD. MW 10-10.2, Vis. 34-39, WL 14-7.

BOP PROGRAM: BOP's will be installed on 13 3/8" casing and tested daily.

GAS NOT DEDICATED:

ATTENTION: 180 DAYS  
12-26-81  
WHILE DRILLING UNDERWAY

IN ABOVE SPACE DESCRIBE PROPOSED PROGRAM; IF PROPOSAL IS TO DEEPEN OR PLUG BACK, GIVE DATA ON PRESENT PRODUCTIVE ZONE AND PROPOSED NEW PRODUCTIVE ZONE. GIVE BLOWOUT PREVENTER PROGRAM, IF ANY.

I hereby certify that the information above is true and complete to the best of my knowledge and belief.

Signed Steve Rook Title Geographer Date 6/24/81  
(This space for State Use)

APPROVED BY Mike Williams TITLE OIL AND GAS INSPECTOR DATE JUN 28 1981

CONDITIONS OF APPROVAL, IF ANY:

**NEW MEXICO OIL CONSERVATION COMMISSION**  
**WELL LOCATION AND ACREAGE DEDICATION PLAT**

Form C-102  
 Supersedes C-128  
 Effective 1-1-65

All distances must be from the outer boundaries of the Section.

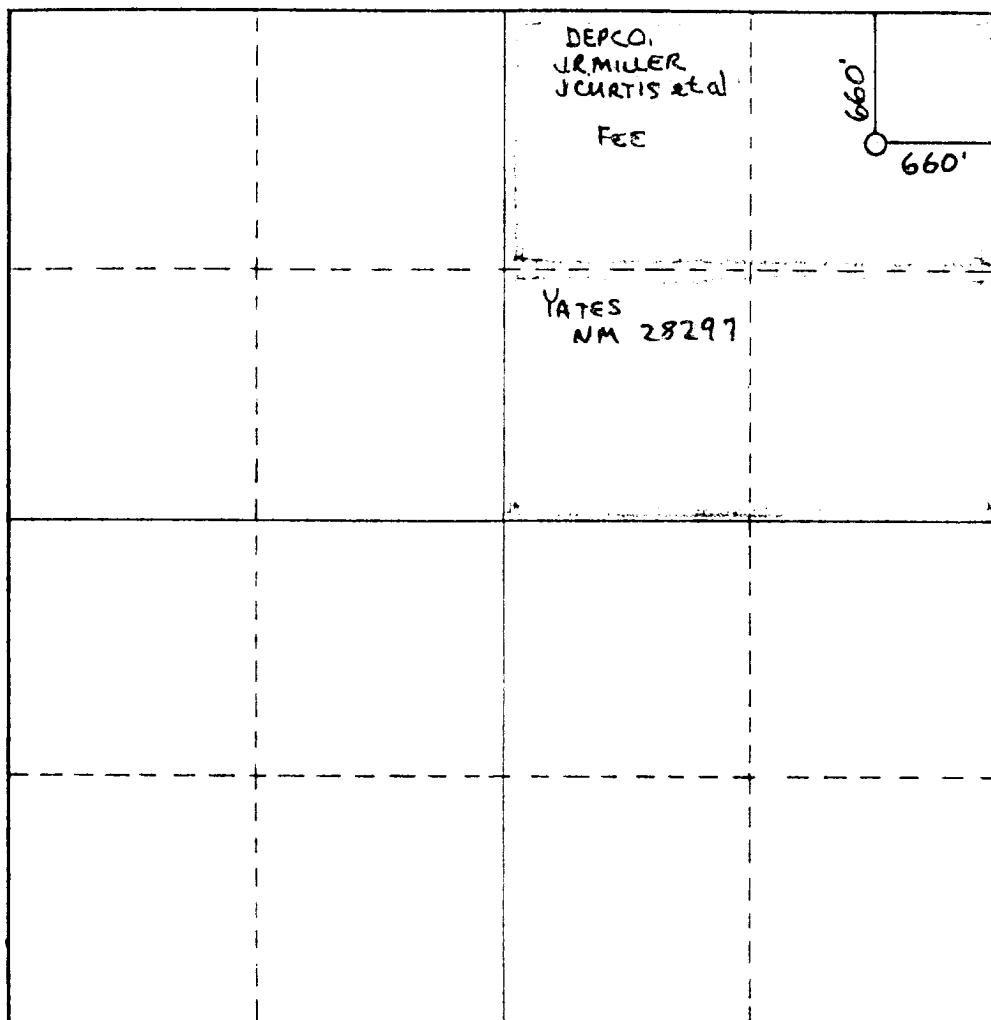
Operator <b>Yates Petroleum Corporation</b>			Lease <b>Curtis "QR" Com.</b>		Well No. <b>1</b>
Unit Letter <b>A</b>	Section <b>26</b>	Township <b>5 South</b>	Range <b>24 East</b>	County <b>Chaves</b>	
Actual Footage Location of Well: <div style="display: flex; justify-content: space-between; padding: 5px;"> <span><b>660</b> feet from the <b>North</b> line and</span> <span><b>660</b> feet from the <b>East</b> line</span> </div>					
Ground Level Elev. <b>3943.3</b>	Producing Formation <b>ABO</b>	Pool <b>WILDCAT ABO</b>		Dedicated Acreage: <b>160</b> Acres	

1. Outline the acreage dedicated to the subject well by colored pencil or hachure marks on the plat below.
2. If more than one lease is dedicated to the well, outline each and identify the ownership thereof (both as to working interest and royalty).
3. If more than one lease of different ownership is dedicated to the well, have the interests of all owners been consolidated by communitization, unitization, force-pooling, etc?

☐ Yes    ☐ No    If answer is "yes," type of consolidation \_\_\_\_\_

If answer is "no," list the owners and tract descriptions which have actually been consolidated. (Use reverse side of this form if necessary.) \_\_\_\_\_

No allowable will be assigned to the well until all interests have been consolidated (by communitization, unitization, forced-pooling, or otherwise) or until a non-standard unit, eliminating such interests, has been approved by the Commission.



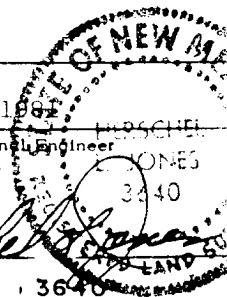
**CERTIFICATION**

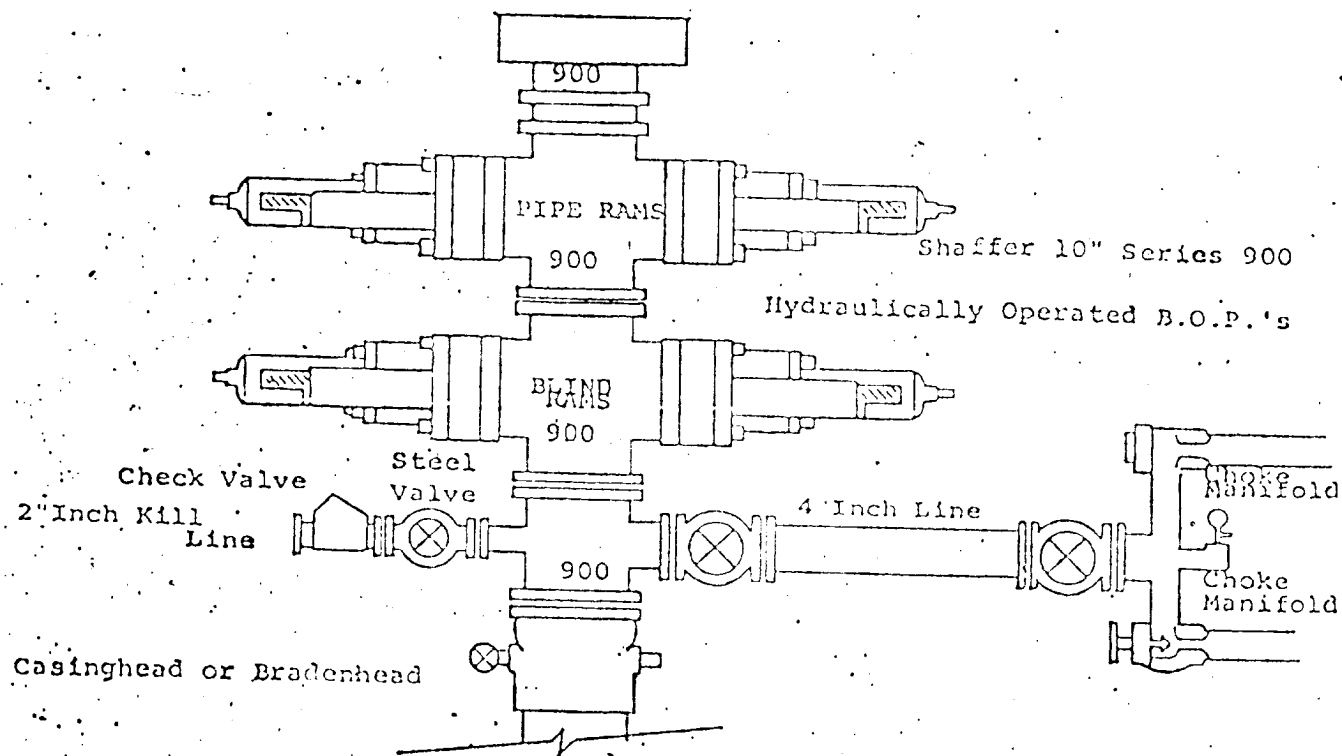
I hereby certify that the information contained herein is true and complete to the best of my knowledge and belief.

*[Signature]*  
 Name  
 Position  
 Company  
 Date

I hereby certify that the well location shown on this plat was plotted from field notes of actual surveys made by me or under my supervision, and that the same is true and correct to the best of my knowledge and belief.

Date Surveyed  
 February 9, 1982  
 Registered Professional Engineer and/or Land Surveyor  
 Certificate No. 3640





THE FOLLOWING CONSTITUTE MINIMUM BLOWOUT PREVENTER REQUIREMENTS

1. All preventers to be hydraulically operated with secondary manual controls installed prior to drilling out from under casing.
2. Choke outlet to be a minimum of 4" diameter.
3. Kill line to be of all steel construction of 2" minimum diameter.
4. All connections from operating manifolds to preventers to be all steel, hole or tube a minimum of one inch in diameter.
5. The available closing pressure shall be at least 15% in excess of that required with sufficient volume to operate the B.O.P.'s.
6. All connections to and from preventer to have a pressure rating equivalent to that of the B.O.P.'s.
7. Inside blowout preventer to be available on rig floor.
8. Operating controls located a safe distance from the rig floor.
9. Hole must be kept filled on trips below intermediate casing. Operator not responsible for blowouts resulting from not keeping hole full.
10. D. P. float must be installed and used below zone of first gas intrusion.