

STATE OF NEW MEXICO
OIL AND MINERALS DEPARTMENT

L CONSERVATION DIVISION

P. O. BOX 2088

SANTA FE, NEW MEXICO 87501

JUL 9 1981

O. C. D.
ARTESIA, OFFICE

30-005-61025

Form C-101
Revised 10-1-78

NO. OF COPIES RECEIVED	
DISTRIBUTION	
SANTA FE	1
FILE	1
U.S.G.S.	2
LAND OFFICE	1
OPERATOR	1

APPLICATION FOR PERMIT TO DRILL, DEEPEN, OR PLUG BACK

Type of Work DRILL <input checked="" type="checkbox"/> DEEPEN <input type="checkbox"/> PLUG BACK <input type="checkbox"/>		5A. Indicate Type of Lease STATE <input checked="" type="checkbox"/> FEE <input type="checkbox"/>
Type of Well OIL WELL <input checked="" type="checkbox"/> GAS WELL <input checked="" type="checkbox"/> OTHER <input type="checkbox"/> SINGLE ZONE <input type="checkbox"/> MULTIPLE ZONE <input type="checkbox"/>		6. State Oil & Gas Lease No. LG-4333
Name of Operator Yates Petroleum Corporation		7. Unit Agreement Name
Address of Operator 207 South 4th Street, Artesia, NM 88210		8. Farm or Lease Name Skinny "00" State
Location of Well UNIT LETTER E LOCATED 1980 FEET FROM THE North LINE 660 FEET FROM THE West LINE OF SEC. 16 TWP. 6S RGE. 25e NMPM		9. Well No. 2
		10. Field and Pool, or Wildcat Abo
		12. County Chaves
19. Proposed Depth Approx. 4500'		19A. Formation Abo
20. Rotary or C.T. Rotary		
Elevations (Show whether DT, RT, etc.) 4027.8 GR	21A. Kind & Status Plug. Bond Blanket	21B. Drilling Contractor L & M #2
22. Approx. Date Work will start ASAP		

PROPOSED CASING AND CEMENT PROGRAM

SIZE OF HOLE	SIZE OF CASING	WEIGHT PER FOOT	SETTING DEPTH	SACKS OF CEMENT	EST. TOP
17 1/2"	13 3/8"	48# J-55	1000'	800 sx.	circulated
7 7/8"	5 1/2" or 4 1/2"	15.5# or 10.5#	TD	450 sx.	

We propose to drill and test the Abo and intermediate formations. Approximately 1000' of surface casing will be set and cement circulated to shut off gravel and caving. If needed (lost circulation), 8 5/8" intermediate casing will be run to 1500' and cemented with the amount of cement calculated to tie back in with surface casing. Temperature survey will be run. If commercial, production casing will be run and cemented with adequate cover, perforate and stimulate as needed for production.

MUD PROGRAM: FW gel and LCM to 1500', Brine KCL to 3200, KCL Drispak & Starch to TD.
MW 10-10.2, Vis. 34-39, WL 14-7.

BOP PROGRAM: BOP's will be installed on 13 3/8" casing and tested daily.

APPROVAL VALID FOR 180 DAYS

GAS NOT DEDICATED:

PERMIT EXPIRES 1-13-82

Original Application was submitted 6/9/81.

UNLESS DRILLING UNDERWAY

BOVE SPACE DESCRIBE PROPOSED PROGRAM: IF PROPOSAL IS TO DEEPEN OR PLUG BACK, GIVE DATA ON PRESENT PRODUCTIVE ZONE AND PROPOSED NEW PRODUCTIVE ZONE. GIVE BLOWOUT PREVENTER PROGRAM, IF ANY.

I hereby certify that the information above is true and complete to the best of my knowledge and belief.

by Alfredo Rodriguez Title Geographer Date 7-8-81

(This space for State Use)

MOVED BY W.A. Gressett TITLE SUPERVISOR, DISTRICT II DATE JUL 13 1981

CONDITIONS OF APPROVAL, IF ANY:

NO. OF COPIES RECEIVED	
DISTRIBUTION	
SANTA FE	
FILE	
U.S.G.S.	
LAND OFFICE	
OPERATOR	

NEW MEXICO OIL CONSERVATION COMMISSION

RECEIVED

Form C-101
Revised 1-1-65

JUL 7 1981

O. C. D.

ARTESIA OFFICE

APPLICATION FOR PERMIT TO DRILL, DEEPEN, OR PLUG BACK

1. Type of Work		5A. Indicate Type of Lease STATE <input checked="" type="checkbox"/> FEE <input type="checkbox"/>	
2. Name of Operator Yates Petroleum Corporation ✓		5. State Oil & Gas Lease No. LG-4333	
3. Address of Operator 207 South 4th Street, Artesia, NM 88210		7. Unit Agreement Name	
4. Location of Well UNIT LETTER E LOCATED 1980 FEET FROM THE North LINE AND 660 FEET FROM THE West LINE OF SEC. 16 TWP. 6S RGE. 25e NMPM		8. Farm or Lease Name Skinny "OO" State	
19. Proposed Depth Approx. 4500'		9. Well No. 2	
20. Rotary or C.T. Rotary		10. Field and Pool, or Wildcat Abo	
21A. Kind & Status Plug. Bond Blanket		11. County Chaves	
21B. Drilling Contractor L & M #2		12. County Chaves	
22. Approx. Date Work will start ASAP			

PROPOSED CASING AND CEMENT PROGRAM

SIZE OF HOLE	SIZE OF CASING	WEIGHT PER FOOT	SETTING DEPTH	SACKS OF CEMENT	EST. TOP
17 1/2"	13 3/8"	48# J-55	900'	300 sx.	circulate
7 7/8"	5 1/2" or 4 1/2"	15.5# or 10.5#	TD	450 sx.	

We propose to drill and test the Abo and intermediate formations. Approximately 900' of surface casing will be set and cement circulated to shut off gravel and caving. If needed (most circulation), 8 5/8" intermediate casing will be run to 1500' and cement circulated. If commercial, production casing will be run and cemented with adequate cover, perforate and stimulate as needed for production.

MUD PROGRAM: FW gel and LCM to 1500', Brine KCL to 3200', KCL Drispak & Starch to TD.
MW 10-10.2, Vis. 34-39, WL 14-7.

BOP PROGRAM: BOP's will be installed on 13 3/8" casing and tested daily.

GAS NOT DEDICATED:

~~Original Application was submitted 6/9/81.~~

ABOVE SPACE DESCRIBE PROPOSED PROGRAM: IF PROPOSAL IS TO DEEPEN OR PLUG BACK, GIVE DATA ON PRESENT PRODUCTIVE ZONE AND PROPOSED NEW PRODUCTIVE ZONE. GIVE BLOWOUT PREVENTER PROGRAM, IF ANY.

I hereby certify that the information above is true and complete to the best of my knowledge and belief.

Signed Gloria Rodriguez Title Reg. Mgr. Date 7-7-81
(This space for State Use)

APPROVED BY _____ TITLE _____ DATE JUL 13 1981
CONDITIONS OF APPROVAL, IF ANY:

**NEW MEXICO OIL CONSERVATION COMMISSION
WELL LOCATION AND ACREAGE DEDICATION PLAT**

Form C-102
Supersedes C-128
Effective 1-1-65

All distances must be from the outer boundaries of the Section.

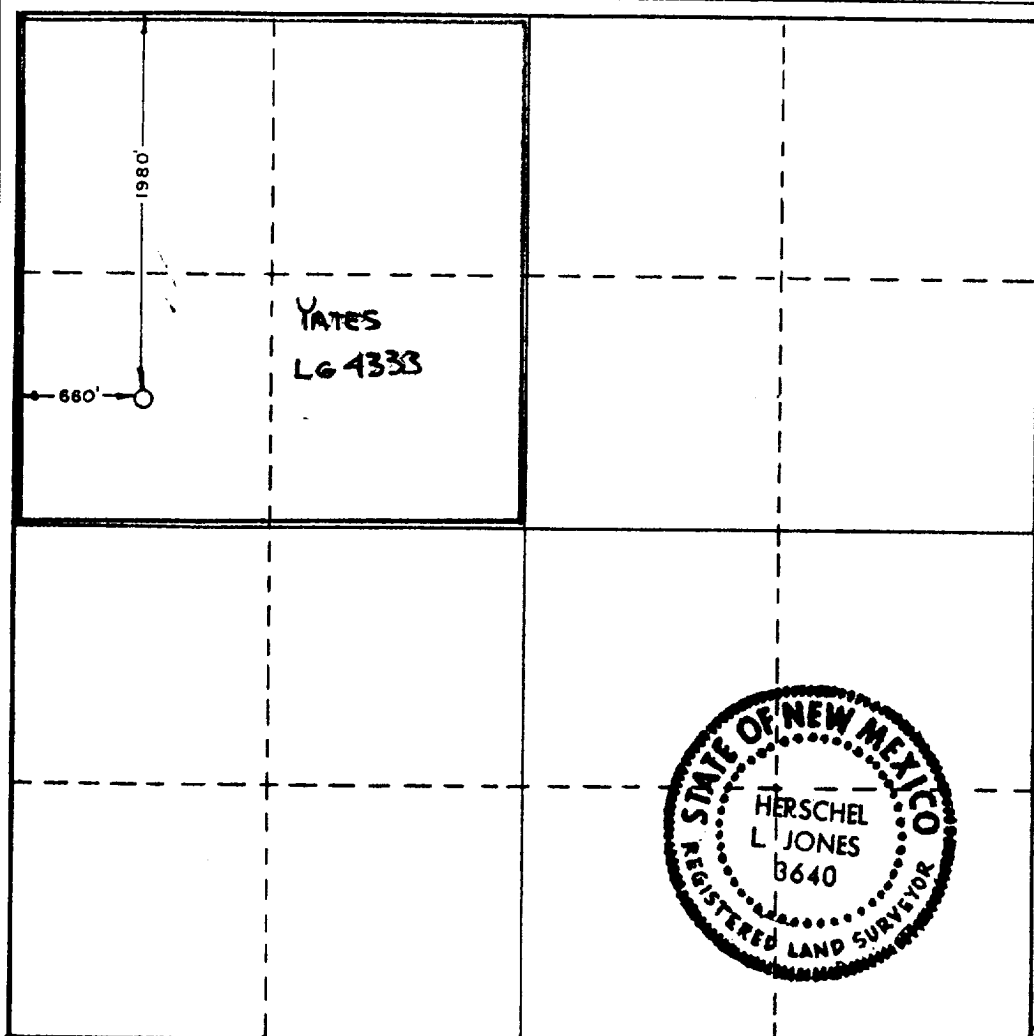
Operator YATES PETROLEUM CORPORATION			Lease Skinny "QO" State		Well No. 2
Unit Letter "E"	Section 16	Township 6 South	Range 25 East	County Chaves	
Actual Footage Location of Well: 1980 feet from the North line and 660 feet from the West line					
Ground Level Elev. 4027.8	Producing Formation Abo		Pool Undes. Abo		Dedicated Acreage: 160 Acres

1. Outline the acreage dedicated to the subject well by colored pencil or hachure marks on the plat below.
2. If more than one lease is dedicated to the well, outline each and identify the ownership thereof (both as to working interest and royalty).
3. If more than one lease of different ownership is dedicated to the well, have the interests of all owners been consolidated by communitization, unitization, force-pooling, etc?

☐ Yes ☐ No If answer is "yes," type of consolidation _____

If answer is "no," list the owners and tract descriptions which have actually been consolidated. (Use reverse side of this form if necessary.) _____

No allowable will be assigned to the well until all interests have been consolidated (by communitization, unitization, forced-pooling, or otherwise) or until a non-standard unit, eliminating such interests, has been approved by the Commission.



CERTIFICATION

I hereby certify that the information contained herein is true and complete to the best of my knowledge and belief.

[Signature]
Name

Gliserio Rodriquez

Position

Geographer

Company

Yates Petroleum Corporation

Date

5/27/81

I hereby certify that the well location shown on this plat was plotted from field notes of actual surveys made by me or under my supervision, and that the same is true and correct to the best of my knowledge and belief.

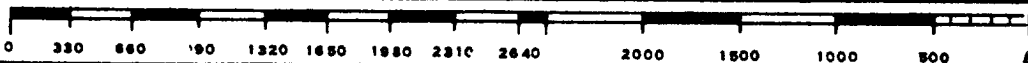
Date Surveyed

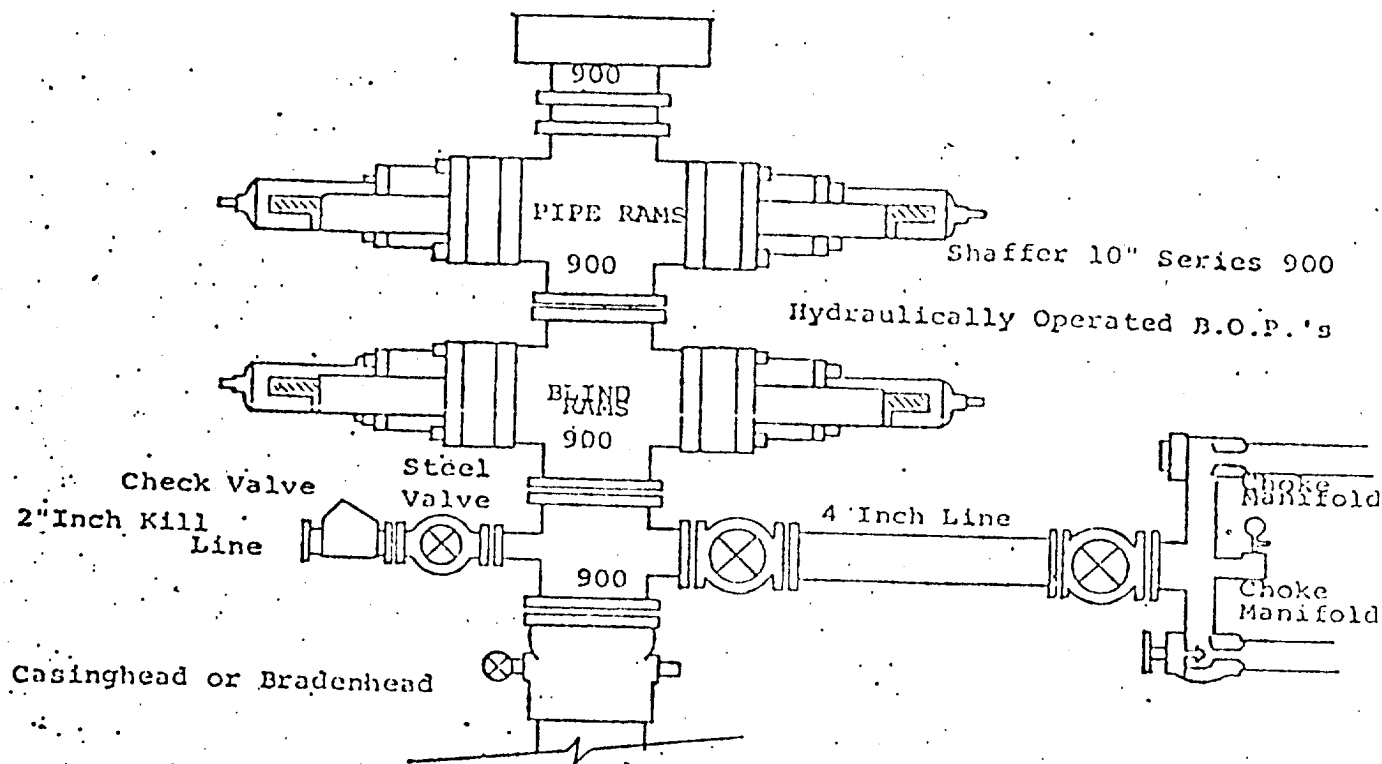
May 14, 1981

Registered Professional Engineer and/or Land Surveyor

[Signature]
Certificate No.

3640





THE FOLLOWING CONSTITUTE MINIMUM BLOWOUT PREVENTER REQUIREMENTS

1. All preventers to be hydraulically operated with secondary manual controls installed prior to drilling out from under casing.
2. Choke outlet to be a minimum of 4" diameter.
3. Kill line to be of all steel construction of 2" minimum diameter.
4. All connections from operating manifolds to preventers to be all steel, hole or tube a minimum of one inch in diameter.
5. The available closing pressure shall be at least 15% in excess of that required with sufficient volume to operate the B.O.P.'s.
6. All connections to and from preventer to have a pressure rating equivalent to that of the B.O.P.'s.
7. Inside blowout preventer to be available on rig floor.
8. Operating controls located a safe distance from the rig floor.
9. Hole must be kept filled on trips below intermediate casing. Operator not responsible for blowouts resulting from not keeping hole full.
10. D. P. float must be installed and used below zone of first gas intrusion.