

NO. OF COPIES RECEIVED	
DISTRIBUTION	
SANTA FE	1
FILE	1
U.S.G.S.	1
LAND OFFICE	1
OPERATOR	1

APPLICATION FOR PERMIT TO DRILL, DEEPEN OR PLUG BACK

a. Type of Work

b. Type of Well

DRILL ☒

DEEPEN ☐

PLUG BACK ☐

OIL WELL ☒

GAS WELL ☐

OTHER

SINGLE ZONE ☐

MULTIPLE ZONE ☐

c. Name of Operator

Stevens Operating Corporation

d. Address of Operator

P. O. Box 2203, Roswell, New Mexico 88201

e. Location of Well

UNIT LETTER N

LOCATED 990'

FEET FROM THE South

LINE

1650' FEET FROM THE West

LINE OF SEC. 6

TWP. 9S

RGT. 29E

NEEPM

12. County

Chaves

f. Elevations (Show whether DI, KI, etc.)

3945.4 GR, 3950.4 KB

21A. Kind & Status Plug. Bond

Statewide

19. Proposed Depth

2950'

19A. Formation

San Andres

20. Rotary or C.T.

Rotary

21B. Drilling Contractor

Artesia Fishing Tool

22. Approx. Date Work will start

7-20-81

PROPOSED CASING AND CEMENT PROGRAM

SIZE OF HOLE	SIZE OF CASING	WEIGHT PER FOOT	SETTING DEPTH	SACKS OF CEMENT	EST. TOP
12 1/4"	8 5/8"	20#	130'	75	Circ.
7 7/8"	4 1/2"	9.5#	2950'	200	2000

Will drill with water and mud to T.D., log, and if indicated productive, case to T.D. and perforate in producing intervals.

Adequate blowout preventers will be used.

APPROVAL VALID FOR 180 DAYS
PERMIT EXPIRES 1-17-82
UNLESS DRILLING UNDERWAY

ABOVE SPACE DESCRIBE PROPOSED PROGRAM: IF PROPOSAL IS TO DEEPEN OR PLUG BACK, GIVE DATA ON PRESENT PRODUCTIVE ZONE AND PROPOSED NEW PRODUCTIVE ZONE. GIVE BLOWOUT PREVENTER PROGRAM, IF ANY.

I hereby certify that the information above is true and complete to the best of my knowledge and belief.

Signed W. A. Gressett Title President Date 7-14-81

(This space for State Use)

APPROVED BY W. A. Gressett TITLE SUPERVISOR, DISTRICT II DATE JUL 17 1981

ADDITIONS OF APPROVAL, IF ANY:

NE EXICO OIL CONSERVATION COMMISSION
WELL LOCATION AND ACREAGE DEDICATION PLAT

Form C-102
Supersedes C-128
Effective 1-1-65

All distances must be from the outer boundaries of the Section

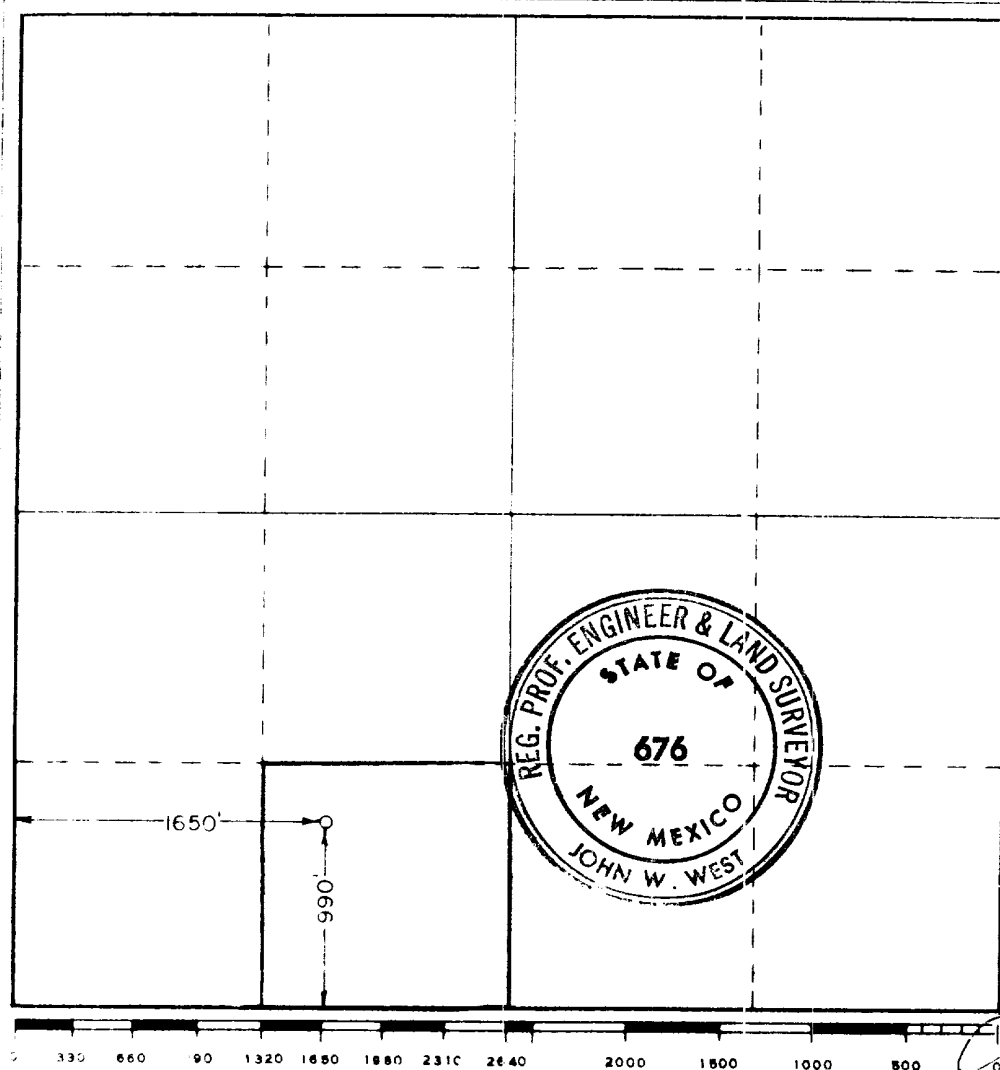
Stevens Operating Corporation			Lease		Well No.
			O'Brien L		11
Section	Township	Range	County		
N	6	9 South	29 East Chaves		
Actual Footage Location of Well:					
000 feet from the south line and		1650 feet from the west line			
Surface Elev.	Producing Formation	Pool	Dedicated Acreage		
3945.4	San Andres	(and) Twin Lakes-San Andres Assoc	40		

1. Outline the acreage dedicated to the subject well by colored pencil or hatchure marks on the plat below.
2. If more than one lease is dedicated to the well, outline each and identify the ownership thereof (both as to working interest and royalty).
3. If more than one lease of different ownership is dedicated to the well, have the interests of all owners been consolidated by communitization, unitization, force-pooling, etc?

☐ Yes ☐ No If answer is "yes," type of consolidation _____

If answer is "no," list the owners and tract descriptions which have actually been consolidated (Use reverse side of this form if necessary.) _____

No allowable will be assigned to the well until all interests have been consolidated (by communitization, unitization, forced-pooling, or otherwise) or until a non-standard unit, eliminating such interests, has been approved by the Commission.



CERTIFICATION	
I hereby certify that the information contained herein is true and complete to the best of my knowledge and belief.	
Name	Ronald J. Eidson
Position	President
Company	Stevens Operating Corporation
Date	7-14-81
I hereby certify that the well location shown on this plat was plotted from field notes of actual surveys made by me or under my supervision, and that the same is true and correct to the best of my knowledge and belief.	
Date Surveyed	5-21-81
Registered Professional Engineer and/or Land Surveyor	
John W. West	
Certificate No.	JOHN W. WEST 676 PATRICK A. ROMERO 6863 Ronald J. Eidson 3239