

NEW MEXICO OIL CONSERVATION COMMISSION  
WELL LOCATION AND ACREAGE DEDICATION PLAT

Form C-102  
Supersedes C-128  
Effective 1-1-65

All distances must be from the outer boundaries of the Section

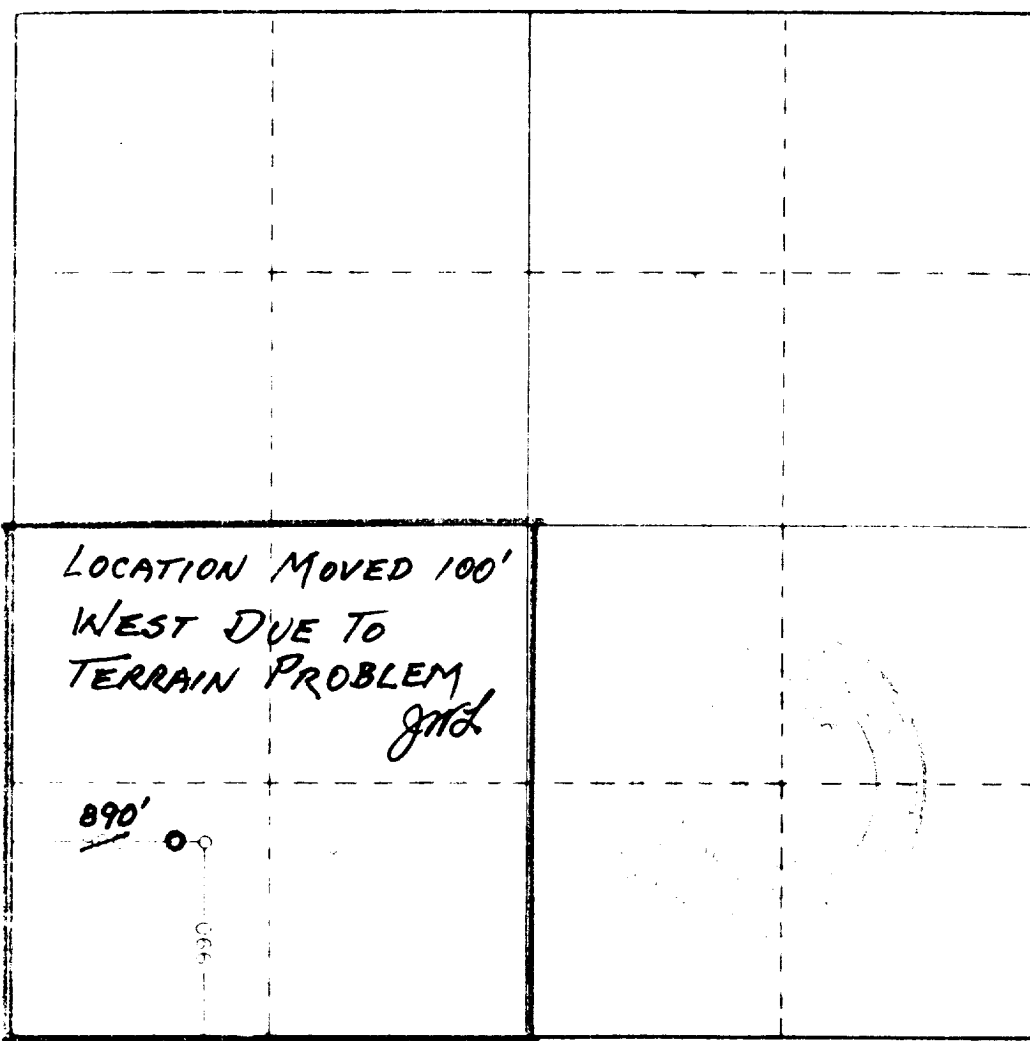
Owner Harper Oil Company			Lease Denton Federal			Well No. 1		
Section 24	Township 5 South	Range 27 East	County Chaves					
Location of Well:								
feet from the south line and			890'			feet from the west line		
Spot Elev. 4197 <sup>2</sup>	Producing Formation Abo		Pool Undesignated			Dedicated Acreage: 160 Acres		

- Outline the acreage dedicated to the subject well by colored pencil or hatchure marks on the plat below.
- If more than one lease is dedicated to the well, outline each and identify the ownership thereof (both as to working interest and royalty).
- If more than one lease of different ownership is dedicated to the well, have the interests of all owners been consolidated by communitization, unitization, force-pooling, etc?

☐ Yes ☐ No If answer is "yes," type of consolidation \_\_\_\_\_

If answer is "no," list the owners and tract descriptions which have actually been consolidated. (Use reverse side of this form if necessary.) \_\_\_\_\_

No allowable will be assigned to the well until all interests have been consolidated (by communitization, unitization, forced-pooling, or otherwise) or until a non-standard unit, eliminating such interests, has been approved by the Commission.



CERTIFICATION

I hereby certify that the information contained herein is true and complete to the best of my knowledge and belief.

*Jerry W. Long*  
Name

JERRY W. LONG

Position

Agent

Company

HARPER OIL COMPANY

Date

July 17, 1981

I hereby certify that the well location shown on this plat was plotted from field notes of actual surveys made by me or under my supervision, and that the same is true and correct to the best of my knowledge and belief.

Date Surveyed

7-14-81

Registered Professional Engineer and/or Land Surveyor

*John W. West*

Certificate No. JOHN W. WEST 676  
PATRICK A. ROMERO 6663  
Ronald J. Eidson 3239

330 600 900 1320 1680 1980 2310 2640 2000 1500 1000 500 0

