

NEW MEXICO OIL CONSERVATION COMMISSION
 STATE OF NEW MEXICO
 SANTA FE
 FILE
 DIVISION
 LAND OFFICE
 OPERATOR

NEW MEXICO OIL CONSERVATION COMMISSION

RECEIVED

JUL 23 1981

O. C. D.

30-005-61040

STATE OF NEW MEXICO
 COUNTY OF SANTA FE
 DISTRICT OF SANTA FE

APPLICATION FOR PERMIT TO DRILL, DEEPEN, PLUG BACK

1. Type of Well: DRILL ☒ DEEPEN ☐ PLUG BACK ☐
 2. Type of Well: GAS WELL ☒ OTHER ☐ SINGLE ZONE ☐ MULTIPLE ZONE ☐
 3. Name of Operator: Cibola Energy Corp.
 4. Location: 1005 Marquette NW Albuquerque, New Mexico
 5. Section: 660 T19S R11S E29E
 6. Township: Chaves
 7. Depth: 8500'
 8. Formation: Siluro-Devonian
 9. Rotary
 10. Cement: 3786.5 Gr.
 11. Statewide
 12. Drilling Contractor: Van Curen
 13. Approval Date: July 24, 1981

PROPOSED CASING AND CEMENT PROGRAM

SIZE OF HOLE	SIZE OF CASING	WEIGHT PER FOOT	SETTING DEPTH	BACKS OF CEMENT	EST. TOP
20"	16"	52#	30'	2 yards	surface
15"	12 3/4"	43#	500'	200 sx	surface
10 3/4"	8 5/8"	24-28#	2750'	650 sx	surface
7 7/8"	5 1/2"	15.5-17#	8500'		*

We plan to drill a 20" hole to 30' and set 16", 52# conductor pipe and cement with 2 yds Redi-mix. Drill a 15" hole to 500' and set 12 3/4" 43# surface pipe and cement with 200 sx Class "C" cement with 2% CaCl and circulate to surface. WOC 18 hrs. ~~dry after 18 hrs.~~ If ~~the hole~~ will continue to drilling a 10 3/4" hole and set 2750' of 8 5/8" 24-28# casing with 650 sx Class "C" cement with 2% CaCl, circulate to surface. WOC 24 hrs. and continue to drill a 7 7/8" hole

BOP Program - 2 Shaefer 10" 900 series BOP's.

* Cementing program on 5 1/2" casing to be determined after reviewing logs.

* Pressure test

APPROVAL VALID FOR 180 DAYS
 PERMIT EXPIRES 1-28-82
 UNLESS DRILLING UNDERWAY

IN ABOVE SPACE DESCRIBE PROPOSED PROGRAM: IF PROPOSAL IS TO DEEPEN OR PLUG BACK, GIVE DATA ON PRESENT PRODUCTIVE ZONE AND PROPOSED NEW PRODUCTIVE ZONE. GIVE BLOWOUT PREVENTER PROGRAM, IF ANY.

I hereby certify that the information above is true and complete to the best of my knowledge and belief.

Signed Gail Quasels Title Production Secretary Date 7-20-81
 (This space for State Use)

APPROVED BY W.A. Grasset TITLE SUPERVISOR, DISTRICT III DATE JUL 23 1981

CONDITIONS OF APPROVAL, IF ANY:
 WSP must be approved prior to producing the well

NE EXICO OIL CONSERVATION COMMISSION
WELL LOCATION AND ACREAGE DEDICATION PLAT

Form C-102
Supersedes C-128
Effective 1-1-85

All distances must be from the outer boundaries of the Section

Operator Cibola Energy Corp.		Lease Barrett		Well No. 1
Tract Letter L	Section 19	Township 11 South	Range 27 East	County Chaves
Actual Footage Location of Well: 1980 feet from the south line and 660 feet from the west line				
Actual Level Elev. 3736.5	Producing Formation Siluro-Devonian	For Wildcat	Dedicated Acreage 295.4	

- Outline the acreage dedicated to the subject well by colored pencil or hachure marks on the plat below.
- If more than one lease is dedicated to the well, outline each and identify the ownership thereof (both as to working interest and royalty)
- If more than one lease of different ownership is dedicated to the well, have the interests of all owners been consolidated by communitization, unitization, force-pooling, etc?

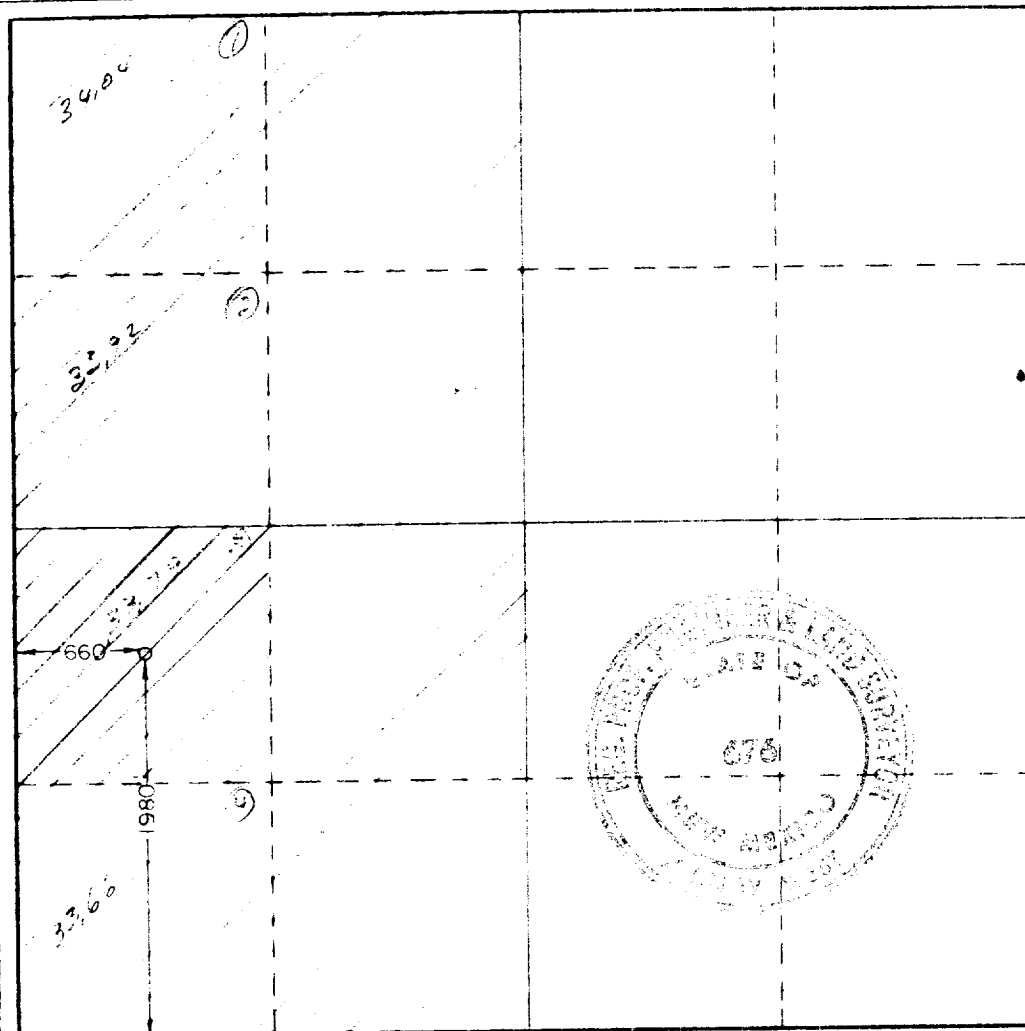
☐ Yes ☒ No

If answer is "yes," type of consolidation

All leases except 13.28% have been acquired and that interest will be force-pooled if not leased, farmed-in or joined.

If answer is "no," list the owners and tract descriptions which have actually been consolidated (Use reverse side of this form if necessary)

No allowable will be assigned to the well until all interests have been consolidated (by communitization, unitization, forced-pooling, or otherwise) or until a non-standard unit, eliminating such interests, has been approved by the Commission.



CERTIFICATION

I hereby certify that the information contained herein is true and complete to the best of my knowledge and belief.

Gail Gunnels

Name
Gail Gunnels

Position
Production Secretary

Company
Cibola Energy Corporation

Date
June 24, 1981

I hereby certify that the well location shown on this plat was plotted from field notes of actual surveys made by me or under my supervision, and that the same is true and correct to the best of my knowledge and belief.

Date Surveyed
6-18 & 19-81

Registered Professional Engineer and/or Land Surveyor

John W. West

Certificate No. **JOHN W. WEST 676**
PATRICK A. ROMERO 6863
Ronald J. Eidson 3239

