

NEW MEXICO OIL CONSERVATION COMMISSION
WELL LOCATION AND ACREAGE DEDICATION PLAT

Form C-128
Supersedes C-128
Effective 1-1-65

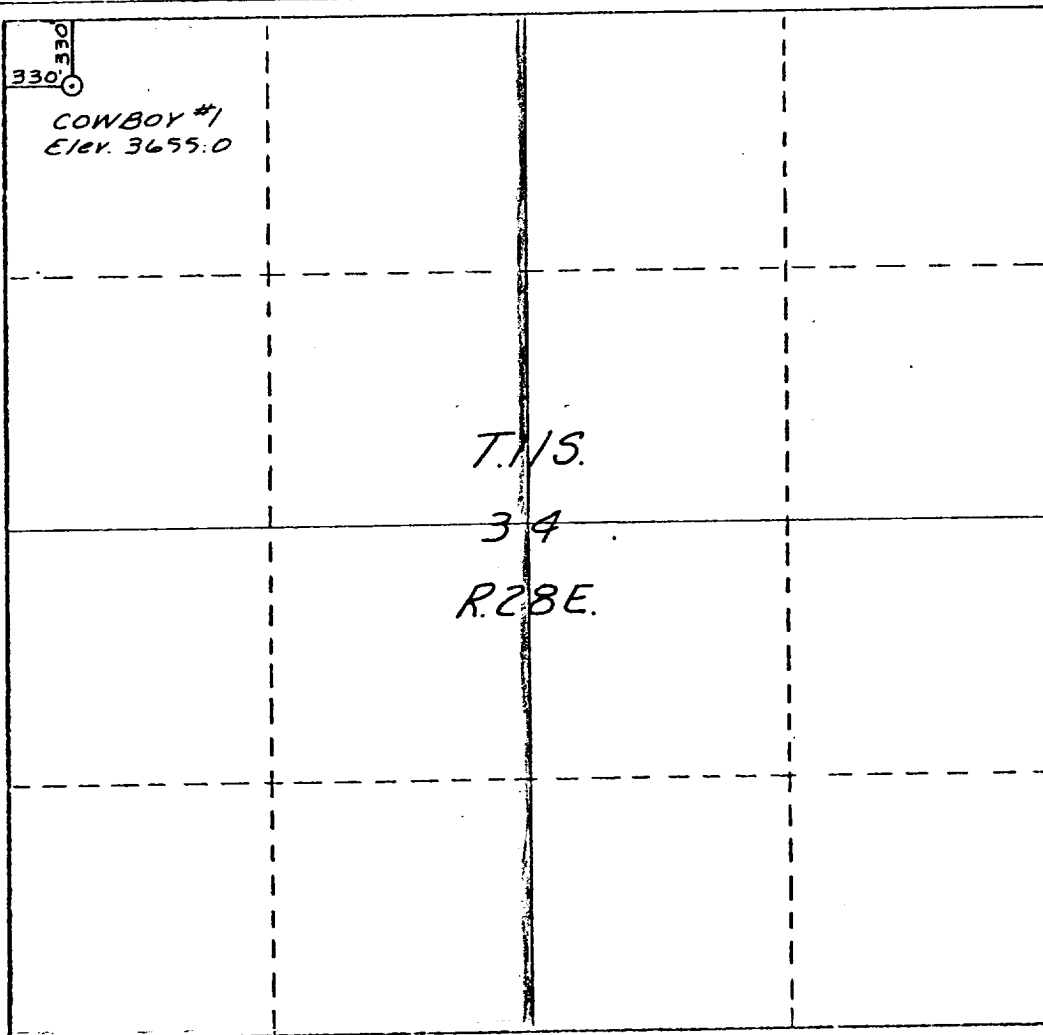
All distances must be from the outer boundaries of the Section.

Operator Cibola Energy Corporation		Lease Cowboy		Well No. #1	
Unit Letter D	Section 34	Township 11 South	Range 28 East	County Chaves	
Actual Footage Location of Well: 330.0 feet from the North line and 330.0 feet from the West line					
Ground Level Elev. 3655.0	Producing Formation SILURO-DEVONIAN	Pool Wildcat	Dedicated Acreage: 320 Acres		

1. Outline the acreage dedicated to the subject well by colored pencil or hatchure marks on the plat below.
2. If more than one lease is dedicated to the well, outline each and identify the ownership thereof (both as to working interest and royalty).
3. If more than one lease of different ownership is dedicated to the well, have the interests of all owners been consolidated by communitization, unitization, force-pooling, etc? **All leases except 12.5% have been acquired and the owners of those leases have indicated that they will either farm-in or join**
☒ Yes ☐ No If answer is "yes," type of consolidation

If answer is "no," list the owners and tract descriptions which have actually been consolidated. (Use reverse side of this form if necessary.)

No allowable will be assigned to the well until all interests have been consolidated (by communitization, unitization, forced-pooling, or otherwise) or until a non-standard unit, eliminating such interests, has been approved by the Commission.



CERTIFICATION

I hereby certify that the information contained herein is true and complete to the best of my knowledge and belief.

Anita Vigil

Name

Anita Vigil

Position

Drilling Secretary

Company

Cibola Energy Corporation

Date

August 3, 1981

I hereby certify that the well location shown on this plat was plotted from field notes of actual surveys made by me or under my supervision, and that the same is true and correct to the best of my knowledge and belief.

7/30

Date Survey

Raymond Lee Dennis

Registered Professional Engineer and/or Land Surveyor

Raymond Lee Dennis

Certificate No.

4115