

NO. OF COPIES RECEIVED	
DISTRIBUTION	
SANTA FE	1
FILE	1
U.S.G.S.	2
LAND OFFICE	
OPERATOR	1

NEW MEXICO OIL CONSERVATION COMMISSION

RECEIVED

AUG 27 1981

Form C-101
Revised 1-1-65

5A. Indicate Type of Lease
STATE ☐ FEE ☒

5. State Oil & Gas Lease No.

APPLICATION FOR PERMIT TO DRILL, DEEPEN, OR PLUG BACK

a. Type of Work
DRILL ☒ DEEPEN ☐ PLUG BACK ☐

b. Type of Well
OIL WELL ☒ GAS WELL ☐ OTHER ☐

2. Name of Operator
Santa Rita Exploration Corporation

3. Address of Operator
P.O. Box 798, Artesia, New Mexico 88210

4. Location of Well
UNIT LETTER E LOCATED 1650 FEET FROM THE North LINE
AND 330 FEET FROM THE West LINE OF SEC. 7 TWP. 9 S RGE. 29 E NMPM

7. Unit Agreement Name

8. Farm or Lease Name
Moonshine 7

9. Well No.
#4

10. Field and Pool, or Wildcat
Und. Twin Lakes -
San Andres Assoc.

12. County
Chaves

19. Proposed Depth
2800'

19A. Formation
San Andres

20. Rotary or C.T.
Rotary (air)

21. Elevations (Show whether DT, RT, etc.)
3913 GL

21A. Kind & Status Plug. Bond
Statewide

21B. Drilling Contractor
Yucca Dr. Co.

22. Approx. Date Work will start
September 4, 1981

PROPOSED CASING AND CEMENT PROGRAM					
SIZE OF HOLE	SIZE OF CASING	WEIGHT PER FOOT	SETTING DEPTH	SACKS OF CEMENT	EST. TOP
10 3/4"	8 5/8"	24#	300'	150 Sxs.	Surface
7 7/8"	4 1/2"	10.5#	2800'	700 Sxs.	Surface

Plan to test the San Andres formation. 8 5/8" casing will be run to approximately 300' and set with 150 Sxs. of Class C cement with 2% CaCl₂. Cement will be circulated to surface. Will drill out of the 8 5/8" casing with 7 7/8" bit to approximately 2800'. If sufficient shows are encountered will then run 2800' of 4 1/2" casing and set with 700 Sxs. of 50/50 poz mix, 2% gel and 8# salt/sx. and cement to surface. Will then log, perforate and complete well.

APPROVAL VALID FOR 180 DAYS
PERMIT EXPIRES 3-1-82
UNLESS DRILLING UNDERWAY

IN ABOVE SPACE DESCRIBE PROPOSED PROGRAM: IF PROPOSAL IS TO DEEPEN OR PLUG BACK, GIVE DATA ON PRESENT PRODUCTIVE ZONE AND PROPOSED NEW PRODUCTIVE ZONE. GIVE BLOWOUT PREVENTER PROGRAM, IF ANY.

I hereby certify that the information above is true and complete to the best of my knowledge and belief.

Signed Donald R Cray Title Agent Date July 14, 1981

(This space for State Use)

APPROVED BY W. A. Gussott TITLE SUPERVISOR, DISTRICT II DATE AUG 31 1981

CONDITIONS OF APPROVAL, IF ANY:

All distances must be from the outer boundaries of the Section.

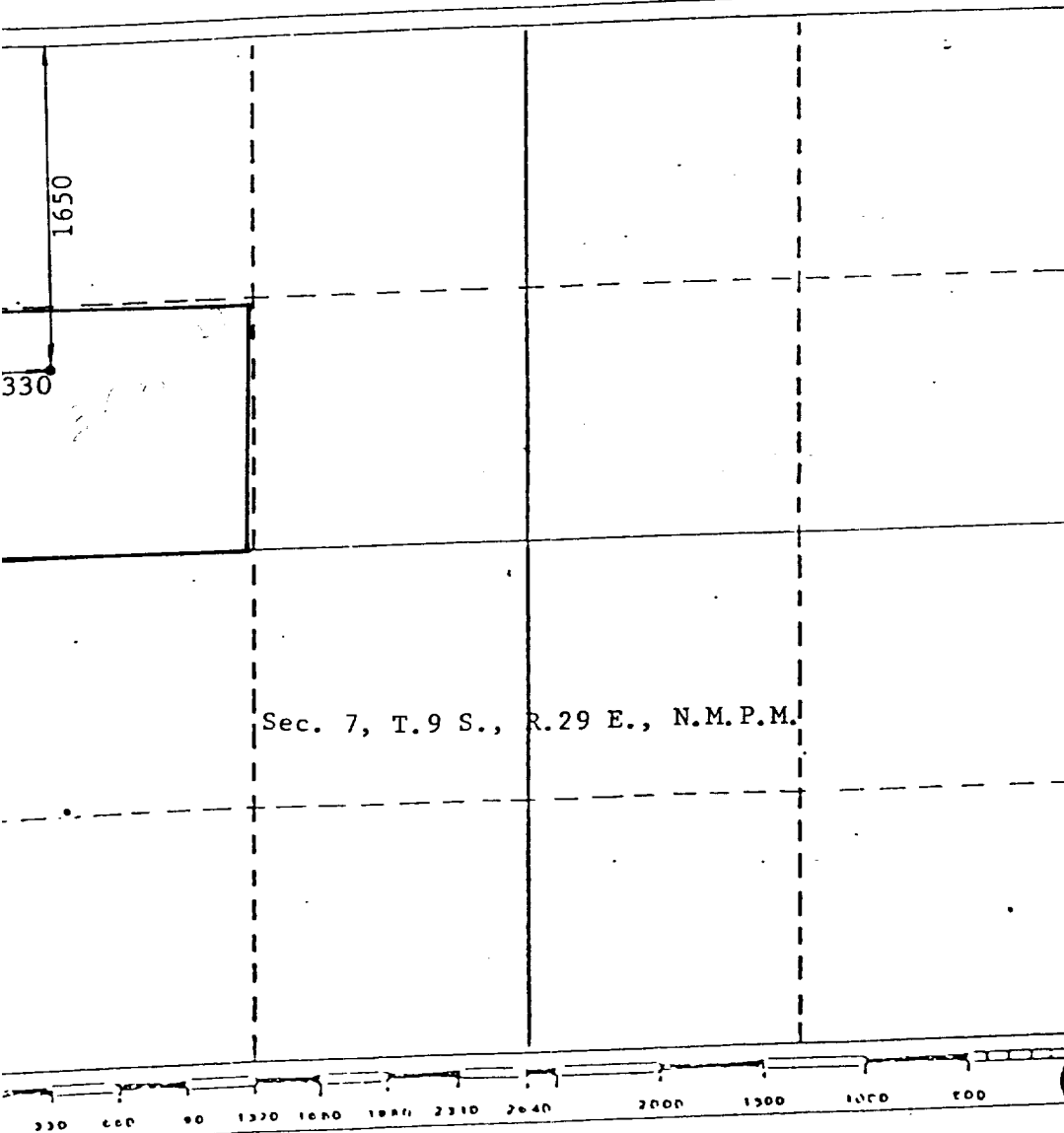
Operator <i>Santa Rita Expl. Corp. Selco, Inc.</i>		Lease Mooshine 7		Well No. #4
Section 7	Township 9 South	Range 29 East	County Chaves	
Well Footage Location of Well: 1650 feet from the North line and 330 feet from the West line		Pool Und. Twin Lakes-SA Assoc.		Dedicated Acreage: SW/4 NW/4 40 Acres
Ground Level Elev. 3913	Producing Formation San Andres			

1. Outline the acreage dedicated to the subject well by colored pencil or hatchure marks on the plat below.
2. If more than one lease is dedicated to the well, outline each and identify the ownership thereof (both as to working interest and royalty). Moon Co. Trust (3/4) Donald Winston (1/32) J. Wyman & Winston (1/64) Charles Kelly (1/128) Pauline Parker (1/64) J.T. Wyman (1/64) Marshall & Winston (1/32) Murry McKinnon (1/128) Tenneco Oil Co. (1/8)
3. If more than one lease of different ownership is dedicated to the well, have the interests of all owners been consolidated by communitization, unitization, force-pooling, etc?

☐ Yes ☐ No If answer is "yes," type of consolidation _____

If answer is "no," list the owners and tract descriptions which have actually been consolidated. (Use reverse side of this form if necessary.) _____

No allowable will be assigned to the well until all interests have been consolidated (by communitization, unitization, forced-pooling, or otherwise) or until a non-standard unit, eliminating such interests, has been approved by the Division.



CERTIFICATION

I hereby certify that the information contained herein is true and complete to the best of my knowledge and belief.

Donald R. Craig

Name

Donald R. Craig

Position

Agent

Company
*Santa Rita Expl. Corp.
Selco, Inc.*

Date

July 14, 1981

I hereby certify that the well location shown on this plat was plotted from field notes of actual surveys made by me or under my supervision, and that the same is true and correct to the best of my knowledge and belief.

Date Surveyed

July 2, 1981

Registered Professional Engineer
and/or Land SurveyorJohn D. Jaquess, P.E. & L.S.
Certificate No. 6290

