

NEW MEXICO OIL CONSERVATION COMMISSION  
WELL LOCATION AND ACREAGE SETTING PLAT

Form O-111  
Supp. 10-1-77  
Effective 10-1-77

All distances must be from the outer boundaries of the Section.

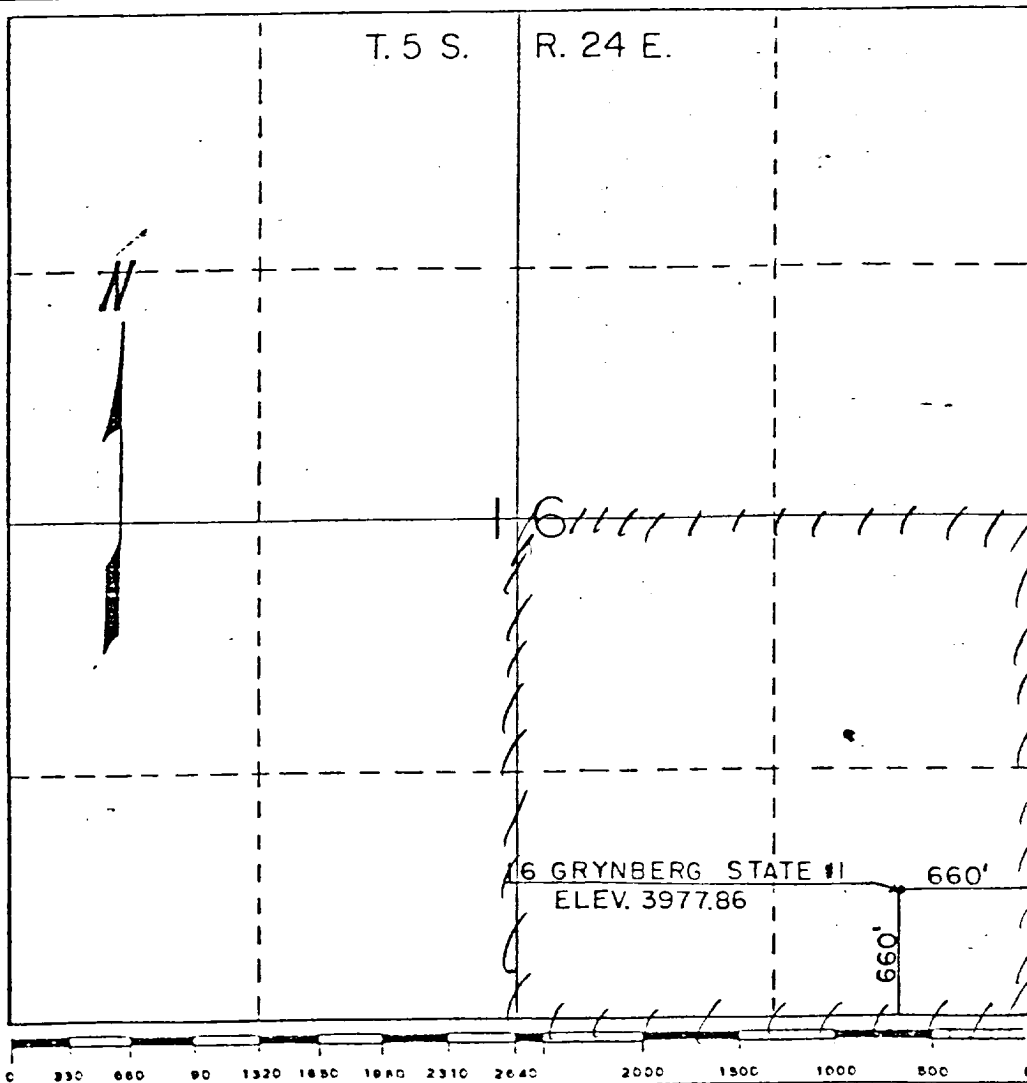
Operator <b>Viking Petroleum, Inc.</b>		Section <b>16</b>		Township <b>5-S</b>	Range <b>24-E</b>	County <b>Chaves</b>	Well No. <b>1</b>
Actual Footage Location of Well: <b>660</b> feet from the <b>SOUTH</b> line and <b>660</b> feet from the <b>EAST</b> line							
Ground Level Elev. <b>3977.86</b>	Producing Formation <b>Abo</b>		Pool <b>Undesignated Abo</b>			Dedicated Acreage: <b>160</b> Acres	

1. Outline the acreage dedicated to the subject well by colored pencil or hachure marks on the plat below.
2. If more than one lease is dedicated to the well, outline each and identify the ownership thereof (both as to working interest and royalty).
3. If more than one lease of different ownership is dedicated to the well, have the interests of all owners been consolidated by communitization, unitization, force-pooling, etc?

☐ Yes ☐ No If answer is "yes," type of consolidation \_\_\_\_\_

If answer is "no," list the owners and tract descriptions which have actually been consolidated. (Use reverse side of this form if necessary.) \_\_\_\_\_

No allowable will be assigned to the well until all interests have been consolidated (by communitization, unitization, forced-pooling, or otherwise) or until a non-standard unit, eliminating such interests, has been approved by the Commission.



CERTIFICATION

I hereby certify that the information contained herein is true and complete to the best of my knowledge and belief.

Name Nancy Stolzle  
Position Agent for Viking Petr., Inc.  
Company Jack Grynberg and Associates  
Date 10-8-81

I hereby certify that the well location shown on this plat was plotted from field notes of actual surveys made by me or under my supervision, and that the same is true and correct to the best of my knowledge and belief.

Professional Engineer  
September 22, 1981  
Date Surveyed 10/8/81  
Registered Professional Engineer  
Thomas T. Mann, P.E. & L.S.  
New Mexico License 277  
Certificate No. \_\_\_\_\_