

NEW MEXICO OIL CONSERVATION COMMISSION  
WELL LOCATION AND ACREAGE DEDICATION PLAT

Form O-10  
1-7-79 (Rev. 6-79)  
10-10-79

All distances must be from the corner boundaries of the Section.

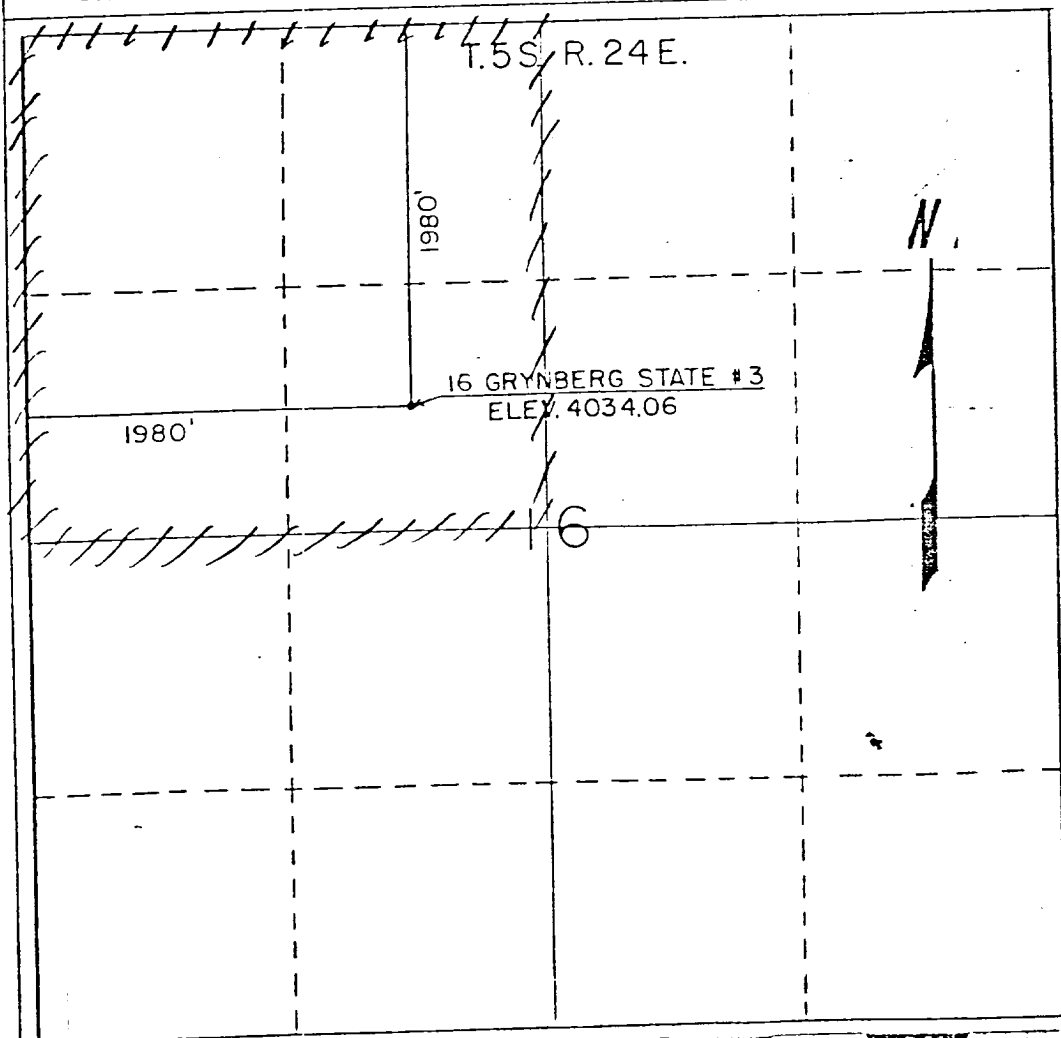
Viking Petroleum, Inc.		16 Grynberg State		Well No. 3
Unit Letter F	Section 16	Township 5-S	Range 24-E	County Chaves
Annual Postage Location of Well: 1980 feet from the NORTH line and 1980 feet from the WEST line				
Ground Level Elev. 4034.06	Producing Formation Abo	Pool Undesignated Abo	Dedicated Acreage: 160 Acres	

- Outline the acreage dedicated to the subject well by colored pencil or hatchure marks on the plat below.
- If more than one lease is dedicated to the well, outline each and identify the ownership thereof (both as to working interest and royalty).
- If more than one lease of different ownership is dedicated to the well, have the interests of all owners been consolidated by communitization, unitization, force-pooling, etc?

☐ Yes ☐ No If answer is "yes," type of consolidation \_\_\_\_\_

If answer is "no," list the owners and tract descriptions which have actually been consolidated. (Use reverse side of this form if necessary.) \_\_\_\_\_

No allowable will be assigned to the well until all interests have been consolidated (by communitization, unitization, forced-pooling, or otherwise) or until a non-standard unit, eliminating such interests, has been approved by the Commission.



CERTIFICATION

I hereby certify that the information contained herein is true and complete to the best of my knowledge and belief.

Name Nancy Stoltz  
Position Agent for Viking Petro., Inc.  
Company Jack Grynberg and Associates  
Date 10-8-81

I hereby certify that the well location shown on this plat was plotted from field notes of actual surveys made by me or under my supervision, and that the same is true and correct to the best of my knowledge and belief.

September 23, 1981

Date Surveyed Thomas Mann  
Registered Professional Engineer  
and/or Land Surveyor  
Thomas T. Mann, P.E. &  
L.S.

New Mexico License 277

0 330 660 990 1320 1650 1980 2310 2640 2970 3300 3630 3960 4290 4620 4950 5280 5610 5940 6270 6600