

NO. OF COPIES RECEIVED	
DISTRIBUTION	
SANTA FE	1
FILE	1
U.S.G.S.	2
LAND OFFICE	
OPERATOR	1

AMENDED APPLICATION TO DRILL

5A. Indicate Type of Lease
STATE ☐ REC ☒
5. State Oil & Gas Lease No.

APPLICATION FOR PERMIT TO DRILL, DEEPEN, OR PLUG BACK

1a. Type of Work
b. Type of Well DRILL ☒ DEEPEN ☐ PLUG BACK ☐
OIL WELL ☐ GAS WELL ☒ OTHER ☐ SINGLE ZONE ☒ MULTIPLE ZONE ☐
2. Name of Operator MESA PETROLEUM CO
3. Address of Operator 1000 VAUGHN BUILDING/MIDLAND, TEXAS 79701-4493
4. Location of Well UNIT LETTER F LOCATED 1980 FEET FROM THE NORTH LINE
AND 1980 FEET FROM THE WEST LINE OF SEC. 29 TWP. 8S RGE. 26E NMPM
7. Unit Agreement Name NOV 03 1981
8. Farm or Lease Name O. C. D. ACME ARTESIA, OFFICE
9. Well No. 8
10. Field and Pool, or Wildcat X UNDESIGNATED ABO
12. County CHAVES

19. Proposed Depth 4800'
19A. Formation ABO
20. Rotary or C.T. ROTARY
21. Elevations (Show whether DF, KI, etc.) 3727' GR
21A. Kind & Status Plug. Bond BLANKET
21B. Drilling Contractor DESERT DRILLING
22. Approx. Date Work will start NOVEMBER 16, 1981

PROPOSED CASING AND CEMENT PROGRAM

SIZE OF HOLE	SIZE OF CASING	WEIGHT PER FOOT	SETTING DEPTH	SACKS OF CEMENT	EST. TOP
17 1/2"	13 3/8"	48#	900'	300/200/300	SURFACE
11"	8 5/8"	24#	1600'	500/300	ISOLATE WTR. O&G
7 7/8"	4 1/2"	10.5#	4800'	500/500	COVER ALL PAY

Propose to drill 17 1/2" hole to approximately 900', set 13 3/8" surface casing and cement to surface. Will reduce hole to 11" and drill to 1600' to set 8 5/8" casing. Will reduce hole to 7 7/8", nipple up RAM type BOP's, and drill to total depth. Drilling medium will be air, foam, or mud as required.

Gas Sales are dedicated.

NOTE: LOCATION MOVED DUE TO GEOLOGICAL CONSTRAINTS.

APPROVAL VALID FOR 180 DAYS
PERMIT EXPIRES 5-5-82
UNLESS DRILLING UNDERWAY

XC: NMOC(6), TLS, CEN RCDS, ACCTG, ROSWELL, MEC, LAND, PARTNERS, FILE, REM

IN ABOVE SPACE DESCRIBE PROPOSED PROGRAM: IF PROPOSAL IS TO DEEPEN OR PLUG BACK, GIVE DATA ON PRESENT PRODUCTIVE ZONE AND PROPOSED NEW PRODUCTIVE ZONE. GIVE BLOWOUT PREVENTER PROGRAM, IF ANY.

I hereby certify that the information above is true and complete to the best of my knowledge and belief.

Signed R. E. M... Title REGULATORY COORDINATOR Date 11-2-81

(This space for State Use)

APPROVED BY M. Williams TITLE OIL AND GAS INSPECTION DATE NOV 05 1981

CONDITIONS OF APPROVAL, IF ANY:

NEW MEXICO OIL CONSERVATION COMMISSION
WELL LOCATION AND ACREAGE DEDICATION PLAT

Form C-103
Supersedes Form C-102
Effective 1-1-81

All distances must be from the outer boundaries of the Section.

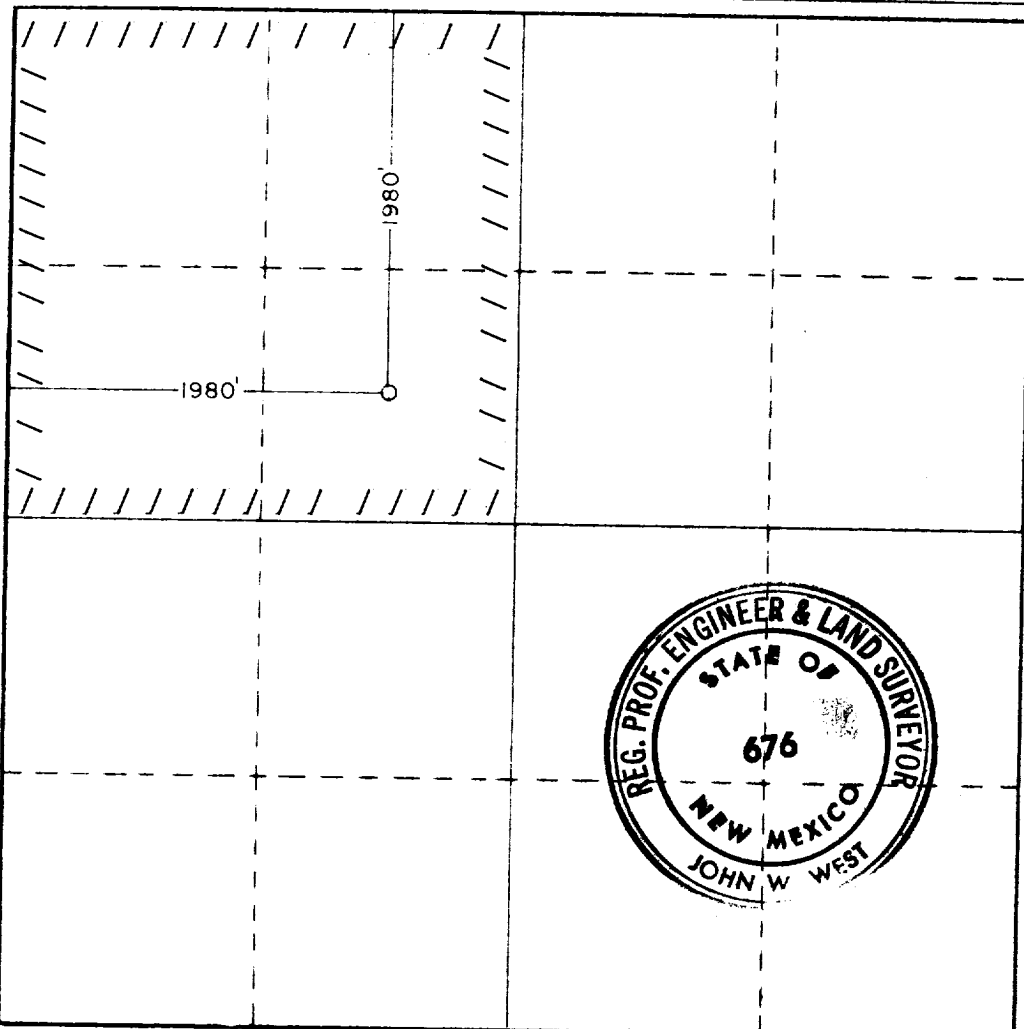
Operator Mesa Petroleum Co.			Lease Acme			Well No. 8		
Unit Letter F	Section 29	Township 8 South		Range 26 East	County Chaves			
Actual Footage Location of Well: 1980 feet from the North line and 1980 feet from the West line								
Ground Level Elev. 3727.0'	Producing Formation ABO			Pool UNDESIGNATED		Dedicated Acreage: NW 4 160 Acres		

1. Outline the acreage dedicated to the subject well by colored pencil or hachure marks on the plat below.
2. If more than one lease is dedicated to the well, outline each and identify the ownership thereof (both as to working interest and royalty).
3. If more than one lease of different ownership is dedicated to the well, have the interests of all owners been consolidated by communitization, unitization, force-pooling, etc?

☐ Yes ☐ No If answer is "yes," type of consolidation _____

If answer is "no," list the owners and tract descriptions which have actually been consolidated. (Use reverse side of this form if necessary.) _____

No allowable will be assigned to the well until all interests have been consolidated (by communitization, unitization, forced-pooling, or otherwise) or until a non-standard unit, eliminating such interests, has been approved by the Commission.



CERTIFICATION

I hereby certify that the information contained herein is true and complete to the best of my knowledge and belief.

R. E. Mathis

Name
R. E. MATHIS
Position
REGULATORY COORDINATOR

Company
MESA PETROLEUM CO

Date
11-2-81

I hereby certify that the well location shown on this plat was plotted from field notes of actual surveys made by me or under my supervision, and that the same is true and correct to the best of my knowledge and belief.

Date Surveyed
Oct. 28, 1981

Registered Professional Engineer and/or Land Surveyor

Patrick A. Romero

Certificate No. **JOHN W. WEST**
PATRICK A. ROMERO
Ronald L. Elders

0 330 660 990 1320 1650 1980 2310 2640 2970 3300 3630 3960 4290 4620 4950 5280 5610 5940 6270 6600