

WELL LOCATION AND ACREAGE DEDICATION PLAT

Superseded by
Effective 1-1-83

All distances must be from the outer boundaries of the section.

Operator George J. Crosby				Lease Wilson		Well No. 1	
Section 13	Township 10 S.	Range 24 E.	County Chaves				

Actual Well Location of Well:

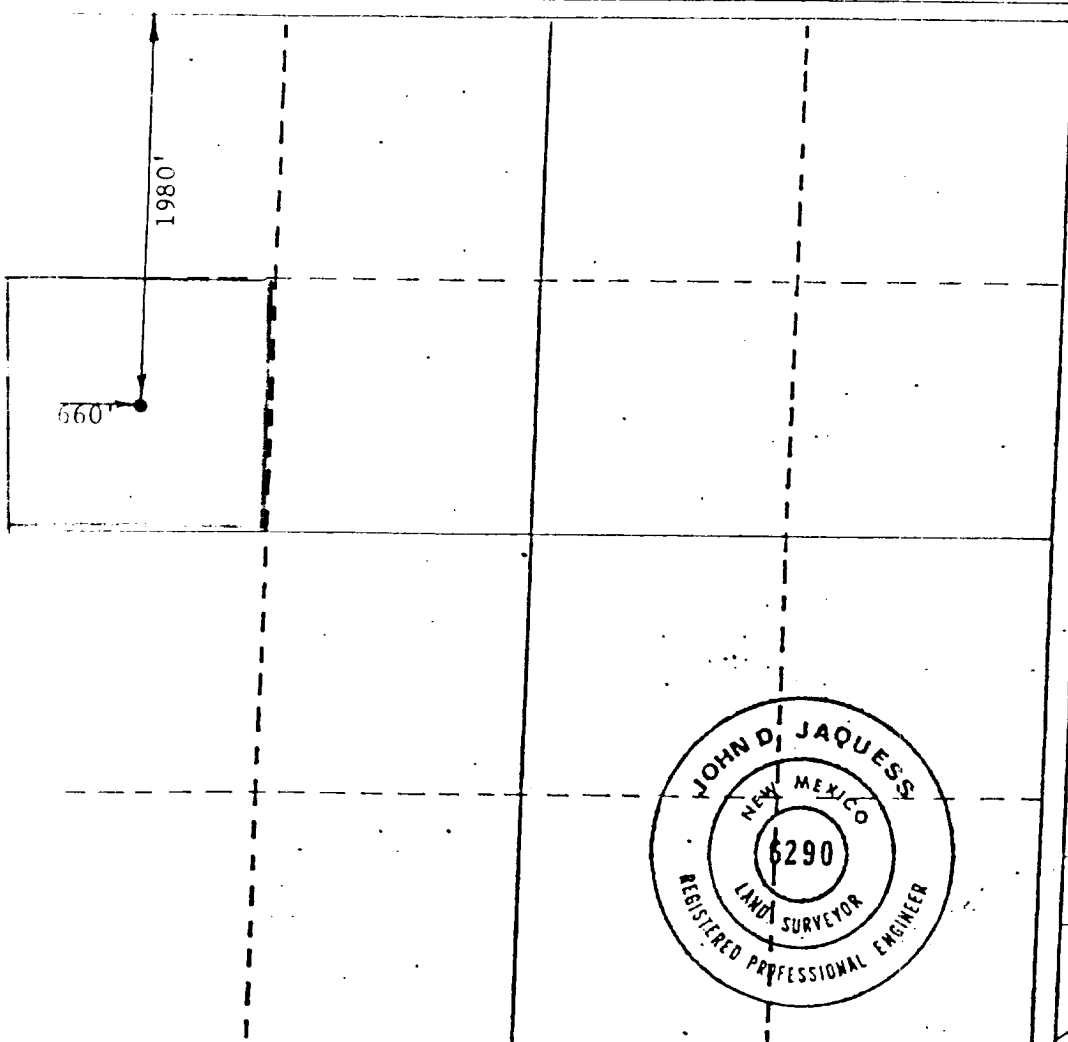
660 feet from the West line and 1980 feet from the North line	Underlying Formation Sau Andres	Pool Wilson	Dedicated Acreage: 40 Acres
and Level Elev. 3542.75'			

1. Outline the acreage dedicated to the subject well by colored pencil or hatchure marks on the plat below.
2. If more than one lease is dedicated to the well, outline each and identify the ownership thereof (both as to working interest and royalty).
3. If more than one lease of different ownership is dedicated to the well, have the interests of all owners been consolidated by communitization, unitization, force-pooling, etc?

☐ Yes ☐ No If answer is "yes," type of consolidation _____

If answer is "no," list the owners and tract descriptions which have actually been consolidated. (Use reverse side of this form if necessary.) _____

No allowable will be assigned to the well until all interests have been consolidated (by communitization, unitization, forced-pooling, or otherwise) or until a non-standard unit, eliminating such interests, has been approved by the Commission.



CERTIFICATION

I hereby certify that the information contained herein is true and complete to the best of my knowledge and belief.

George J. Crosby
Name

George J. Crosby

Position

Operator

Company

George J. Crosby

Date

October 22, 1981

I hereby certify that the well location shown on this plat was plotted from field notes of actual surveys made by me or under my supervision, and that the same is true and correct to the best of my knowledge and belief.

Date Surveyed

Feb. 5, 1981

Registered Professional Engineer and/or Land Surveyor

John D. Jaquess
John D. Jaquess P.E. & L.S.
Certificate No. 6290

0 500 1000 1500 2000 2500 3000 3500 4000 4500 5000

ENERGY and MINERALS DEPARTMENT

Oil Conservation Division
Drawer DD
Artesia, New Mexico 88210



George J. Crosby
513 N. Missouri
Roswell, NM 88201

RECEIVED

JUL 30 1982

O. C. D.
ARTESIA, OFFICE