

UNITED STATES  
DEPARTMENT OF THE INTERIOR

## GEOLOGICAL SURVEY

5. LEASE DESIGNATION AND SERIAL NO.

NM 14310

6. IF INDIAN, ALLOTTEE OR TRIBE NAME

7. UNIT AGREEMENT NAME

8. FARM OR LEASE NAME

KELLY JEAN

9. WELL NO.

1-Y

10. FIELD AND POOL, OR WILDCAT

Wildcat

11. SEC., T., R., M., OR BLK.  
AND SURVEY OR AREA

Sec. 15, T6S, R29E

12. COUNTY OR PARISH 13. STATE

Chaves

N.M.

## 1a. TYPE OF WORK

DRILL ☒DEEPEN ☐PLUG BACK ☐

## b. TYPE OF WELL

OIL  
WELL ☒GAS  
WELL ☐

OTHER

SINGLE  
ZONE ☐MULTIPLE  
ZONE ☐

## 2. NAME OF OPERATOR

BILL G. ISLER

## 3. ADDRESS OF OPERATOR

9720-B Candelaria, N.E., Albuquerque, New Mexico, 88201

## 4. LOCATION OF WELL (Report location clearly and in accordance with any State requirements.)\*

At surface

2,060' FNL, 1,980' FEL

At proposed prod. zone

Same

## 14. DISTANCE IN MILES AND DIRECTION FROM NEAREST TOWN OR POST OFFICE\*

42 miles northeast of Roswell, New Mexico

## 15. DISTANCE FROM PROPOSED\*

LOCATION TO NEAREST

PROPERTY OR LEASE LINE, FT.

(Also to nearest drlg. unit line, if any)

660'

## 16. NO. OF ACRES IN LEASE

1447.78

17. NO. OF ACRES ASSIGNED  
TO THIS WELL

40

## 18. DISTANCE FROM PROPOSED LOCATION\*

TO NEAREST WELL, DRILLING, COMPLETED,  
OR APPLIED FOR, ON THIS LEASE, FT.

None

## 19. PROPOSED DEPTH

3,000' San Andres

## 20. ROTARY OR CABLE TOOLS

Rotary

## 21. ELEVATIONS (Show whether DF, RT, GR, etc.)

4189' GL

## 22. APPROX. DATE WORK WILL START\*

November 1, 1981

## 23.

## PROPOSED CASING AND CEMENTING PROGRAM

SIZE OF HOLE	SIZE OF CASING	WEIGHT PER FOOT	SETTING DEPTH	QUANTITY OF CEMENT
9 7/8"	7"	20# K55	400'	150 sx Class C (Circ)
7 7/8"	4 1/2"	9.5# K55	3,000'	225 sx 50/50 POZ

Plan to test San Andres by drilling to approximately 3,000'.

If warranted, standard completion will be made in this formation.

A double ram 6", 900 series, blowout preventer will be used while drilling below  
surface casing.

IN ABOVE SPACE DESCRIBE PROPOSED PROGRAM: If proposal is to deepen or plug back, give data on present productive zone and proposed new productive zone. If proposal is to drill or deepen directionally, give pertinent data on subsurface locations and measured and true vertical depths. Give blowout preventer program, if any.

## 24.

SIGNED

J. C. Johnson

TITLE

Agent for Bill G. Isler

DATE

October 20, 1981

(This space for Federal or State office use)

PERMIT NO.

APPROVAL DATE

APPROVED BY

ORIG. SIGNED JAMES A. GILLHAM

TITLE

DATE

CONDITIONS OF APPROVAL, IF ANY:

OCT 27 1981

JAMES A. GILLHAM  
NATIONAL ENGINEER

\*See Instructions On Reverse Side

NEW MEXICO OIL COMMISSION  
WELL LOCATION AND ACREAGE DEDICATION PLAT

Form No. 1  
Revised 1-62  
ENR-100-100

All distances must be from the outer boundaries of the Section

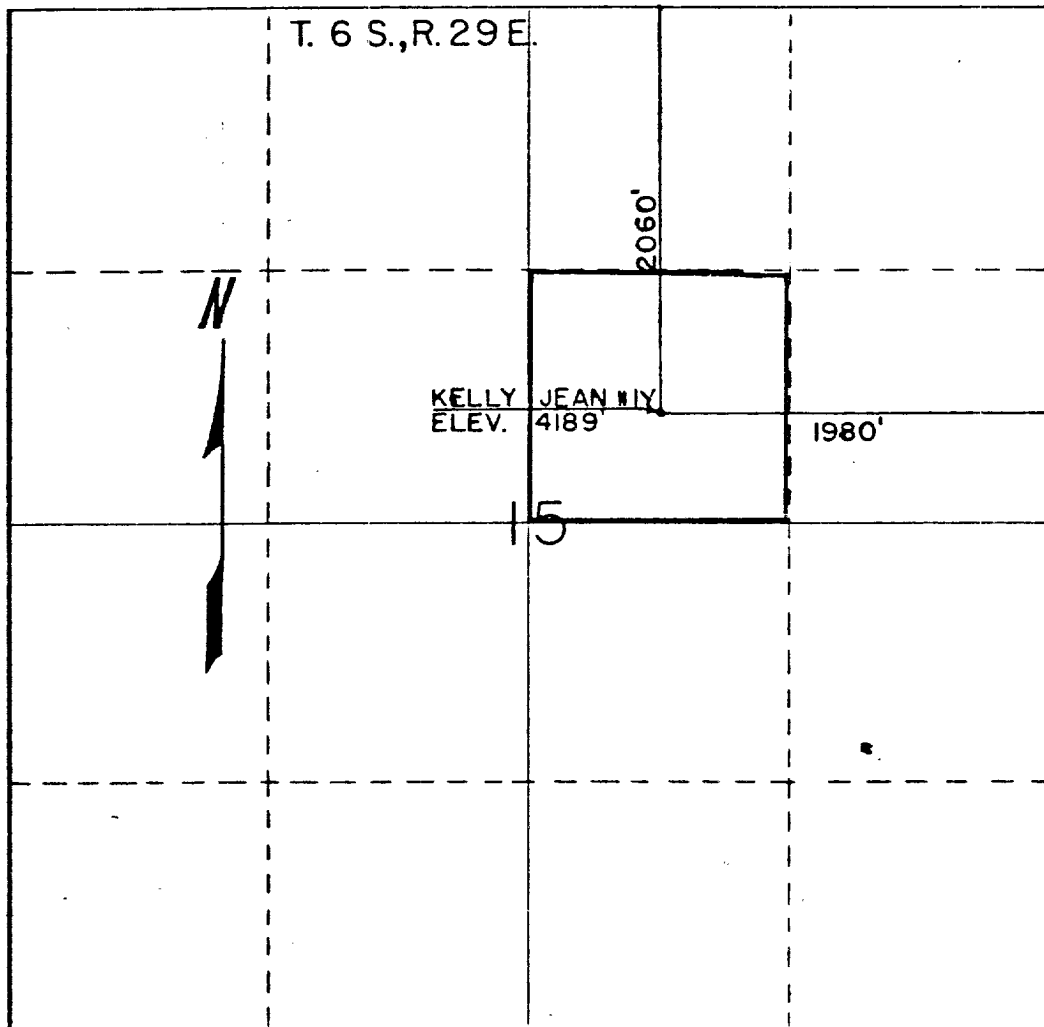
Operator <i>W. J. Mann</i>		Well No. <i>14</i>	
Unit Letter <i>G</i>	Section <i>15</i>	Township <i>6-S</i>	Range <i>29-E</i>
Approx. Fence Location of Well: 2060 feet from the NORTH line and 1980 feet from the EAST line			
Ground Level Elev. 4189	Producing Formation <i>San Juan</i>	Pool <i>San Juan</i>	Dedicated Acreage: <i>40</i> Acres

- Outline the acreage dedicated to the subject well by colored pencil or hatchure marks on the plat below.
- If more than one lease is dedicated to the well, outline each and identify the ownership thereof (both as to working interest and royalty).
- If more than one lease of different ownership is dedicated to the well, have the interests of all owners been consolidated by communitization, unitization, force-pooling, etc?

☐ Yes ☐ No If answer is "yes," type of consolidation *—*

If answer is "no," list the owners and tract descriptions which have actually been consolidated. (Use reverse side of this form if necessary.) *—*

No allowable will be assigned to the well until all interests have been consolidated (by communitization, unitization, forced-pooling, or otherwise) or until a non-standard unit, eliminating such interests, has been approved by the Commission.



CERTIFICATION

I hereby certify that the information contained herein is true and complete to the best of my knowledge and belief.

Name  
*Thomas T. Mann*

Position  
*Professional Engineer*

Company  
*W. J. Mann*

Date  
*October 19, 1981*

I hereby certify that the well location shown on this plat was plotted from field notes of actual surveys made by me or under my supervision, and that the same is true and correct to the best of my knowledge and belief.

October 19, 1981

Date Surveyed

Registered Professional Engineer and/or Land Surveyor

Thomas T. Mann, P.E. & L.S.  
N.M. License No. 277

Certificate No.