

All distances must be from the outer boundaries of the Section.

OCT 13 1981

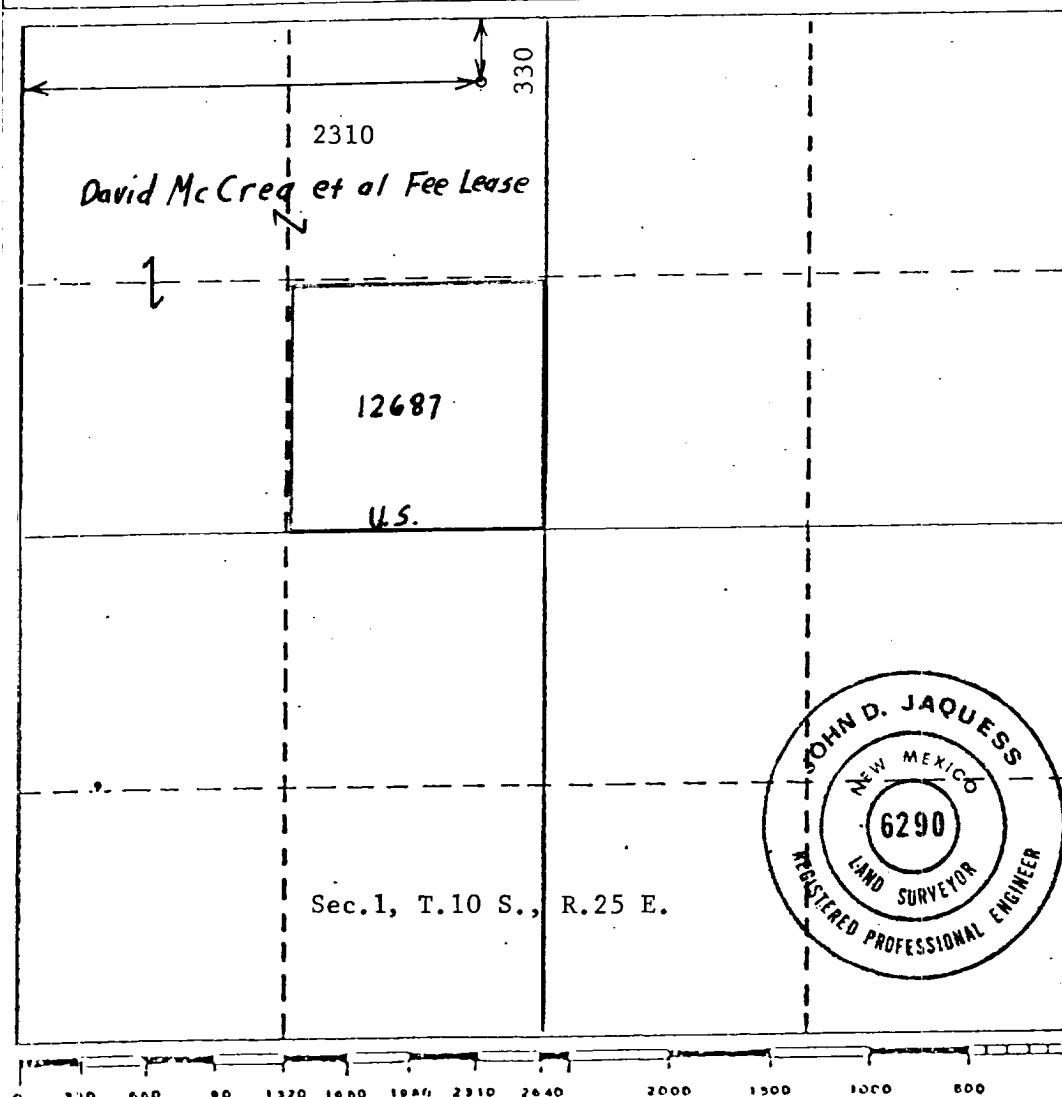
Operator McClellan Oil Corp.		Lease McCrea Fee O.C.D. 1		Well No. 1
Unit Letter	Section 1	Township 10 South	Range 25 East	County ARTESIA, OFFICE Chaves
Actual Footage Location of Well: 330 feet from the North line and 2310 feet from the West line				
Ground Level Elev. 3665	Producing Formation Abo	Pool Undesignated	Dedicated Acreage: 160 Acres	

1. Outline the acreage dedicated to the subject well by colored pencil or hatchure marks on the plat below.
2. If more than one lease is dedicated to the well, outline each and identify the ownership thereof (both as to working interest and royalty).
3. If more than one lease of different ownership is dedicated to the well, have the interests of all owners been consolidated by communitization, unitization, force-pooling, etc?

☒ Yes ☐ No If answer is "yes," type of consolidation Communitization

If answer is "no," list the owners and tract descriptions which have actually been consolidated. (Use reverse side of this form if necessary.)

No allowable will be assigned to the well until all interests have been consolidated (by communitization, unitization, forced-pooling, or otherwise) or until a non-standard unit, eliminating such interests, has been approved by the Division.



CERTIFICATION

I hereby certify that the information contained herein is true and complete to the best of my knowledge and belief.

Name
Jack L. McClellan
Position
President
Company
McClellan Oil Corporation
Date
October 2, 1981

I hereby certify that the well location shown on this plat was plotted from field notes of actual surveys made by me or under my supervision, and that the same is true and correct to the best of my knowledge and belief.

Date Surveyed
April 21, 1981
Registered Professional Engineer and/or Land Surveyor
John D. Jaquess
John D. Jaquess, P.E. & L.S.
Certificate No.
6290