

STATE OF NEW MEXICO
ENERGY AND MINERALS DEPARTMENT

OIL CONSERVATION DIVISION

P. O. BOX 2088

RECEIVED

SANTA FE, NEW MEXICO 87501

NOV 05 1981

O. C. D.

30-005-61208

Form C-101
Revised 10-1-78

NO. OF COPIES RECEIVED	
DISTRIBUTION	
SANTA FE	1
FILE	1
U.S.G.S.	2
LAND OFFICE	
OPERATOR	1

5A. Indicate Type of Lease

STATE ☐

SEE ☒

6. State Oil & Gas Lease No.

APPLICATION FOR PERMIT TO DRILL, DEEPEN, OR PLUG BACK

1a. Type of Work

DRILL ☒

DEEPEN ☐

PLUG BACK ☐

b. Type of Well

OIL WELL ☐

GAS WELL ☒

OTHER

SINGLE ZONE ☒

MULTIPLE ZONE ☐

2. Name of Operator

ESTORIL PRODUCING CORPORATION

3. Address of Operator

11th Floor Vaughn Bldg. Midland, Texas 79701

4. Location of Well

UNIT LETTER K LOCATED 1980 FEET FROM THE South LINE

AND 1980 FEET FROM THE West LINE OF SEC. 15 TWP. 4-S RGE. 23-E NMPM

7. Unit Agreement Name

8. Farm or Lease Name

Gyp Spring

9. Well No.

1

10. Field and Pool, or Wildcat

X Wildcat Abo

12. County

Chaves

19. Proposed Depth

4000'

19A. Formation

Abo

20. Rotary or C.R.

Rotary

11. Elevations (Show whether DE, RT, etc.)

4185.5 GR

21A. Kind & Status Plug. Bond

Blanket

21B. Drilling Contractor

Tex Mex

22. Approx. Date Work will start

Nov. 15, 1981

PROPOSED CASING AND CEMENT PROGRAM

SIZE OF HOLE	SIZE OF CASING	WEIGHT PER FOOT	SETTING DEPTH	SACKS OF CEMENT	EST. TOP
17 1/2	13 3/8	48#	450	595	Surface
12 1/4	8 5/8	24#	1600	881	Surface
7 7/8	4 1/2	10.5#	4000	930	Surface

Blowout Prevention:

Schaeffer Model Double Ram BOP with 3400 psi working pressure with 4 1/2" pipe rams.

Posted ID-1
API + NL Book
11-13-81

APPROVAL VALID FOR 180 DAYS
PERMIT EXPIRES 5-9-82
UNLESS DRILLING UNDERWAY

ABOVE SPACE DESCRIBE PROPOSED PROGRAM; IF PROPOSAL IS TO DEEPEN OR PLUG BACK, GIVE DATA ON PRESENT PRODUCTIVE ZONE AND PROPOSED NEW PRODUCTIVE ZONE. GIVE BLOWOUT PREVENTER PROGRAM, IF ANY.

I hereby certify that the information above is true and complete to the best of my knowledge and belief.

Signed John W. Franklin Title Agent Date 11-4-81

(This space for State Use)

APPROVED BY Mike Williams TITLE OIL AND GAS INSPECTOR DATE 11-4-81

CONDITIONS OF APPROVAL, IF ANY:

Cement must be circulated to surface behind 13 3/8 + 8 5/8 casing

**N. MEXICO OIL CONSERVATION COMMISSION
WELL LOCATION AND ACREAGE DEDICATION PLAT**

Form C-102
Supersedes C-128
Effective 1-1-65

All distances must be from the outer boundaries of the Section

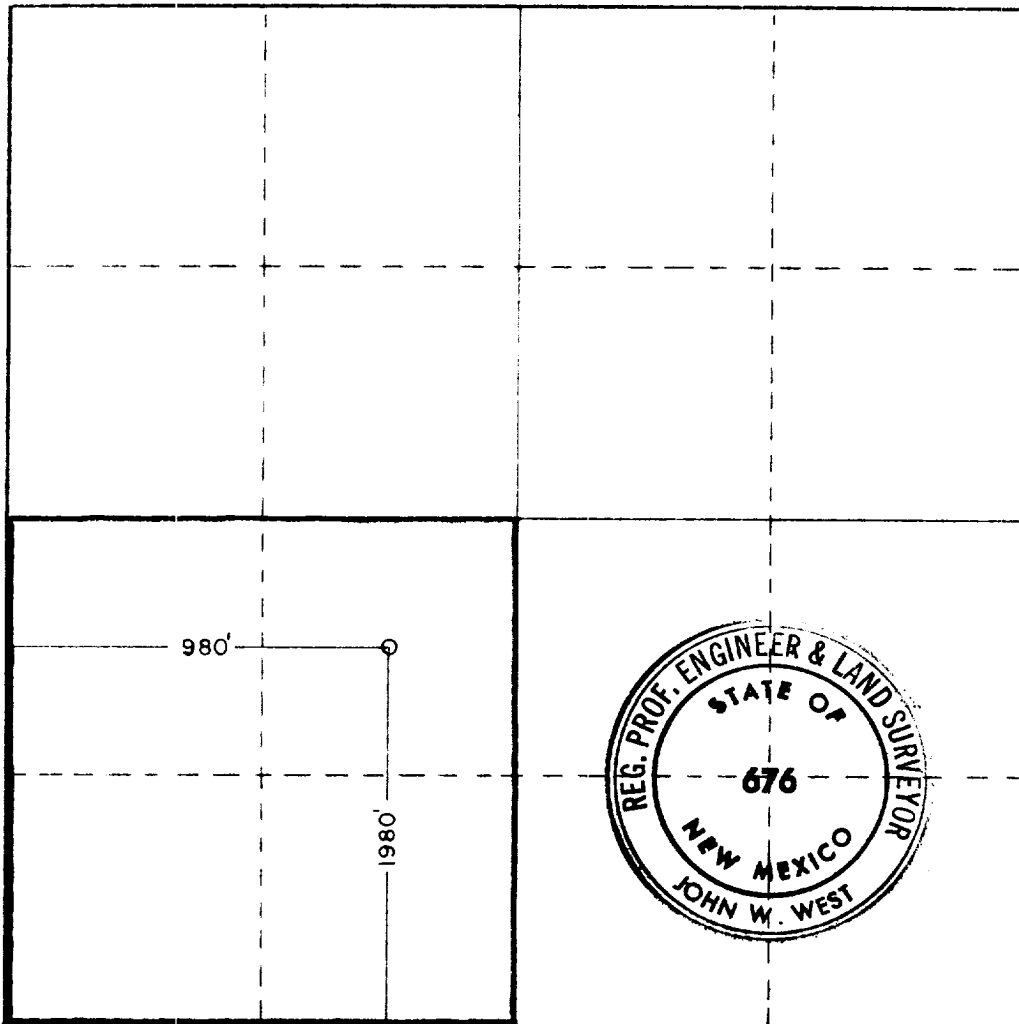
Operator Estoril Producing Corporation			Lease GYP Spring		Well No. 1
Section Letter K	Section 15	Township 4 South	Range 23 East	County Chaves	
Actual Well Location of Well:					
1980 feet from the south line and		1980 feet from the west line			
Ground Level Elev. 4185.5	Producing Formation ABO	Pool WILDCAT Bbo	Dedicated Acreage: 160 Acres		

1. Outline the acreage dedicated to the subject well by colored pencil or hatchure marks on the plat below.
2. If more than one lease is dedicated to the well, outline each and identify the ownership thereof (both as to working interest and royalty).
3. If more than one lease of different ownership is dedicated to the well, have the interests of all owners been consolidated by communitization, unitization, force-pooling, etc?

☐ Yes ☐ No If answer is "yes," type of consolidation _____

If answer is "no," list the owners and tract descriptions which have actually been consolidated. (Use reverse side of this form if necessary.) _____

No allowable will be assigned to the well until all interests have been consolidated (by communitization, unitization, forced-pooling, or otherwise) or until a non-standard unit, eliminating such interests, has been approved by the Commission.



CERTIFICATION

I hereby certify that the information contained herein is true and complete to the best of my knowledge and belief.

Name: *Jerry W. Franklin*

Position:
AGENT

Company:
ESTORIL PRODUCING CORP.

Date:
10-29-81

I hereby certify that the well location shown on this plat was plotted from field notes of actual surveys made by me or under my supervision, and that the same is true and correct to the best of my knowledge and belief.

Date Surveyed:
10-16-81

Registered Professional Engineer and/or Land Surveyor

John W. West
Certificate No. **JOHN W. WEST 676**
PATRICK A. ROMERO 6663
Ronald J. Eidson 3239

