

P. O. BOX 2088

SANTA FE, NEW MEXICO 87501

RECEIVED

NOV 12 1981

NO. OF COPIES RECEIVED	
DISTRIBUTION	
SANTA FE	1
FILE	1
U.S.G.S.	2
LAND OFFICE	1
OPERATOR	1

APPLICATION FOR PERMIT TO DRILL, DEEPEN, OR PLUG BACK

O.C.D.
ARTESIA, OFFICE

Type of Work

DRILL ☒

DEEPEN ☐

PLUG BACK ☐

Type of Well

WELL ☐

CAS WELL ☒

OTHER

SINGLE ZONE ☐

MULTIPLE ZONE ☐

Name of Operator

Yates Petroleum Corporation

Address of Operator

207 South 4th Street, Artesia, NM 88210

Location of Well

UNIT LETTER ~~J~~ ~~10~~

LOCATED

6601980

FEET FROM THE

South

LINE

1980

FEET FROM THE

East

LINE OF SEC.

32

TWP. 7s

R. 26e

W. 1/4

12. County

Chaves

19. Proposed Depth

4700'

19A. Formation

Abo

20. Rotary or C.T.

Rotary

21A. Kind & Status Plug. Bond

3661.1 GL

21B. Drilling Contractor

Blanket

22. Approx. Date Work will start

L & M #2

ASAP

PROPOSED CASING AND CEMENT PROGRAM

SIZE OF HOLE	SIZE OF CASING	WEIGHT PER FOOT	SETTING DEPTH	SACKS OF CEMENT	EST. TOP
15"	10 3/4"	40.5# J-55	Approx. 850	800 sx.	circulated
8 1/2" & 7 7/8"	4 1/2" or 5 1/2"	10.5# or 15.5#	TD	350 sx.	

We propose to drill and test the Abo and intermediate formations. Approximately 850' of surface casing will be set and cement circulated to shut off gravel and casing. If needed (lost circulation) 8 5/8" intermediate casing will be run to 1500 and cemented with enough cement calculated to tie back into the surface casing. Temperature survey will be run to determine cement top. If commercial, production casing will be run and cemented with adequate cover, perforate, and stimulate as needed for production.

WUD PROGRAM: FW gel and LCM, Brine to 3600'. Brine & KCL water to TD. MW 10-10.2.

BOP PROGRAM: BOP's will be installed at approximately 1500' and tested daily.

GAS NOT DEDICATED.

APPROVAL VALID FOR 180 DAYS
PERMIT EXPIRES 5-16-82
UNLESS DRILLING UNDERWAY

BELOW SPACE DESCRIBE PROPOSED PROGRAM: IF PROPOSAL IS TO DEEPEN OR PLUG BACK, GIVE DATA ON PRESENT PRODUCTIVE ZONE AND PROPOSED NEW PRODUCTION ZONE. GIVE BLOWOUT PREVENTER PROGRAM, IF ANY.

I hereby certify that the information above is true and complete to the best of my knowledge and belief.

[Signature] Title Regulatory Manager Date 11-10-81
(This space for State Use)

APPROVED BY *[Signature]* TITLE OIL AND GAS INSPECTOR DATE 11-16-81

REASONS OF APPROVAL, IF ANY:

Notify N.M.O.C.C. in sufficient time to witness cementing the 10 3/4" casing

Posted ID 1
API + M Book
11-20-81

NIE MEXICO OIL CONSERVATION COMMISSION
WELL LOCATION AND ACREAGE DEDICATION PLAT

Form C-102
 Supersedes C-100
 Effective 1-1-65

All distances must be from the outer boundaries of the Section.

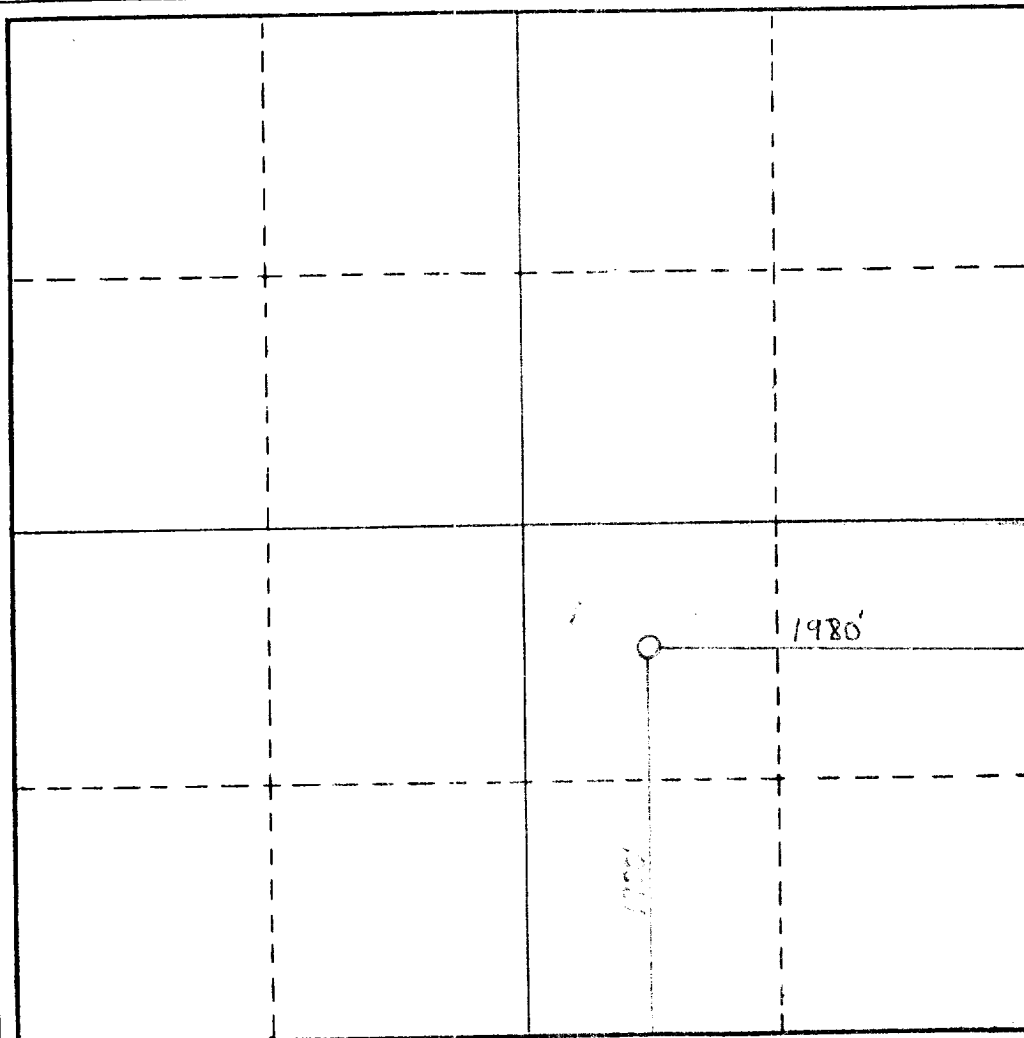
Operator Yates Petroleum Corporation			Lease Penzoil "SG" St.		Well No. 1
Unit Letter J	Section 32	Township 7S	Range 26E	County Chaves	
Actual Footage Location of Well: 1980 feet from the South line and 1980 feet from the East line					
Ground Level Elev. 3675	Producing Formation Abo		Pool Undes. Abo		Dedicated Acreage: 160 Acres

1. Outline the acreage dedicated to the subject well by colored pencil or hachure marks on the plat below.
2. If more than one lease is dedicated to the well, outline each and identify the ownership thereof (both as to working interest and royalty).
3. If more than one lease of different ownership is dedicated to the well, have the interests of all owners been consolidated by communitization, unitization, force-pooling, etc?

☐ Yes ☒ No If answer is "yes," type of consolidation _____

If answer is "no," list the owners and tract descriptions which have actually been consolidated. (Use reverse side of this form if necessary.) _____

No allowable will be assigned to the well until all interests have been consolidated (by communitization, unitization, forced-pooling, or otherwise) or until a non-standard unit, eliminating such interests, has been approved by the Commission.

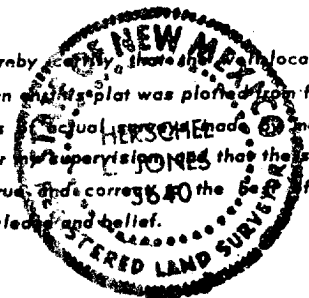


CERTIFICATION

I hereby certify that the information contained herein is true and complete to the best of my knowledge and belief.

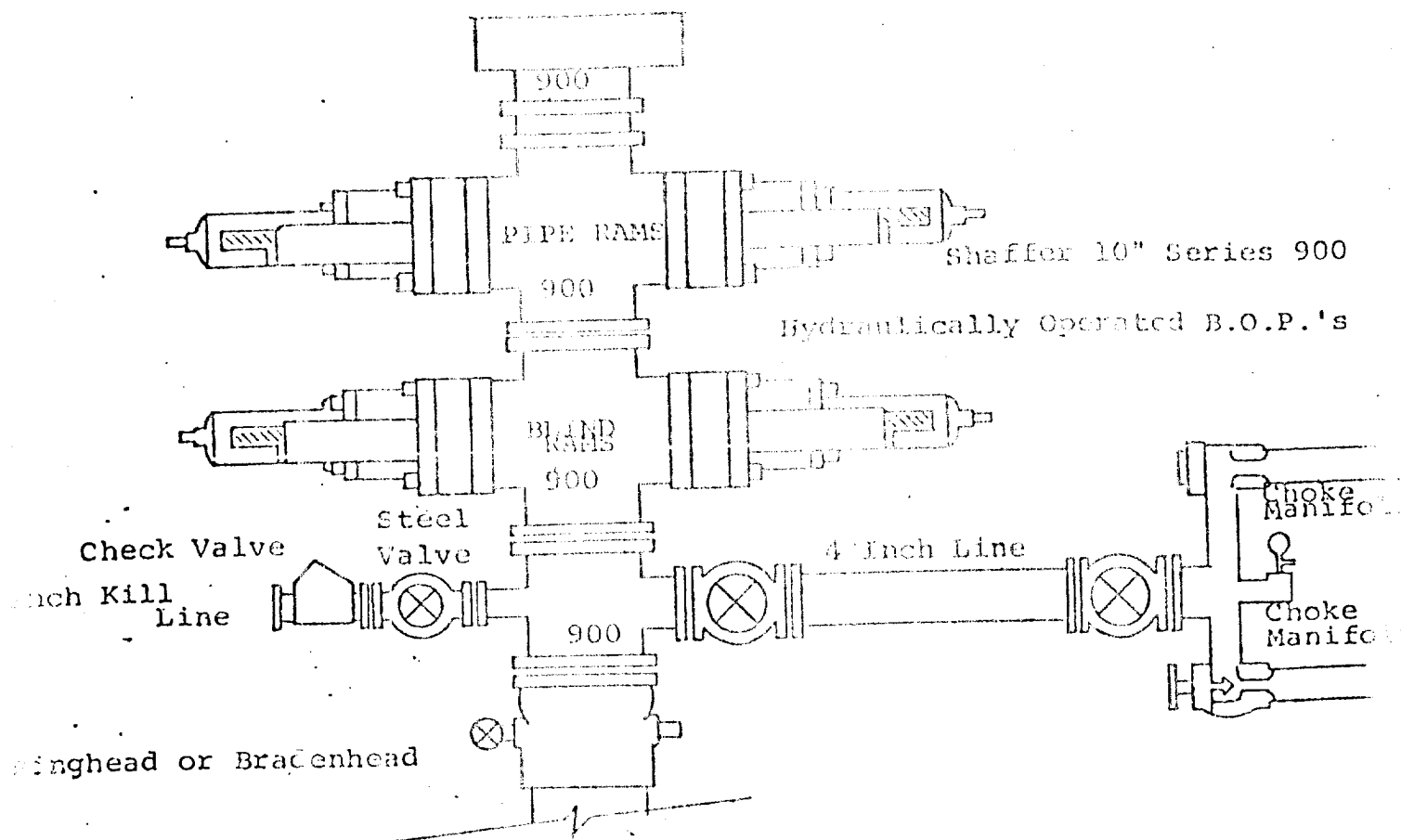
Name
 Regulatory Coordinator
 Position
 Yates Petroleum Corporation
 Company
 November 13, 1981
 Date

I hereby certify that the location shown on this plat was plotted from field notes of actual survey made by me or under my supervision and that the same is true and correct to the best of my knowledge and belief.



Date Surveyed
 November 12, 1981
 Registered Professional Engineer
 and/or Land Surveyor

Certificate No.
 3640



FOLLOWING CONSTITUTE MINIMUM BLOWOUT PREVENTER REQUIREMENTS

- All preventers to be hydraulically operated with secondary manual control installed prior to drilling out from under casing.
- Choke outlet to be a minimum of 4" diameter.
- Kill line to be of all steel construction of 2" minimum diameter.
- All connections from operating manifolds to preventers to be all steel.
- hole or tube a minimum of one inch in diameter.
- The available closing pressure shall be at least 15% in excess of that required with sufficient volume to operate the B.O.P.'s.
- All connections to and from preventer to have a pressure rating equivalent to that of the B.O.P.'s.
- Inside blowout preventer to be available on rig floor.
- Operating controls located a safe distance from the rig floor.
- Hole must be kept filled on trips below intermediate casing. Operator not responsible for blowouts resulting from not keeping hole full.
- D. P. float must be installed and used below zone of first gas intrusion.