

UNITED STATES  
DEPARTMENT OF THE INTERIOR

## GEOLOGICAL SURVEY

## APPLICATION FOR PERMIT TO DRILL, DEEPEN, OR PLUG BACK

## 1a. TYPE OF WORK

DRILL ☒DEEPEN ☐PLUG BACK ☐

## b. TYPE OF WELL

OIL  
WELL ☐GAS  
WELL ☒

OTHER

SINGLE  
ZONE ☐MULTIPLE  
ZONES ☐

## 2. NAME OF OPERATOR

Yates Petroleum Corporation

## 3. ADDRESS OF OPERATOR

207 South 4th Street, Artesia, NM 88210

## 4. LOCATION OF WELL (Report location clearly and in accordance with any State requirements.)

At surface

660' FNL &amp; 1980' FWL

At proposed prod. zone

## 14. DISTANCE IN MILES AND DIRECTION FROM NEAREST TOWN OR POST OFFICE\*

33 miles NNE of Roswell, NM

## 15. DISTANCE FROM PROPOSED\*

LOCATION TO NEAREST

PROPERTY OR LEASE LINE, FT.

(Also to nearest drlg. unit line, if any)

660

## 16. NO. OF ACRES IN LEASE

1200

17. NO. OF ACRES ASSIGNED  
TO THIS WELL

160

## 18. DISTANCE FROM PROPOSED LOCATION\*

TO NEAREST WELL, DRILLING, COMPLETED,  
OR APPLIED FOR, ON THIS LEASE, FT.

## 19. PROPOSED DEPTH

Approx. 4225

## 20. ROTARY OR CABLE TOOLS

Rotary

## 21. ELEVATIONS (Show whether DF, RT, GR, etc.)

3955.5 GL

## 22. APPROX. DATE WORK WILL START\*

ASAP

## 23.

## PROPOSED CASING AND CEMENTING PROGRAM

SIZE OF HOLE	SIZE OF CASING	WEIGHT PER FOOT	SETTING DEPTH	QUANTITY OF CEMENT
15"	10 3/4"	40.5# J-55	Approx. 900'	850 sx. circulated
7 7/8" or 6 1/2"	4 1/2" or 5 1/2"	10.5# or 15.5#	TD	350 sx.

We propose to drill and test the Abo and intermediate formations. Approximately 900' of surface casing will be set and cement circulated to shut off gravel and casing. If needed (lost circulation) 7 5/8" intermediate casing will be run to 1500' and cemented with enough cement calculated to tie back into the surface casing. Temperature survey will be run to determine cement top. If commercial, production casing will be run and cemented with adequate cover, perforate, and stimulate as needed for production.

MUD PROGRAM: FW gel and LCM 1500'; 10# mud to 3500'; Salt gel and starch TD.  
Vis. 50 WL 10-15

BOP PROGRAM: BOP's will be installed at approximately 1500' casing and tested daily.

GAS NOT DEDICATED.

IN ABOVE SPACE DESCRIBE PROPOSED PROGRAM: If proposal is to deepen or plug back, give data on present productive zone and proposed new productive zone. If proposal is to drill or deepen directionally, give pertinent data on subsurface locations and measured and true vertical depths. Give blowout preventer program, if any.

## 24.

SIGNED

TITLE

Regulatory Manager

DATE

11-18-81

(This space for Federal or State office use)

PERMIT NO.

APPROVED

APPROVAL DATE

RECEIVED  
NOV 18 1981

APPROVED BY

TITLE

CONDITIONS OF APPROVAL, IF ANY:

NOV 20 1981

JAMES A. GILLHAM  
DISTRICT SUPERVISOROIL & GAS  
U.S. GEOLOGICAL SURVEY  
ROSWELL, NEW MEXICO

NEW MEXICO OIL CONSERVATION COMMISSION  
WELL LOCATION AND ACREAGE DEDICATION PLAT

Form C-102  
Supersedes C-128  
Effective 1-1-65

All distances must be from the outer boundaries of the Section.

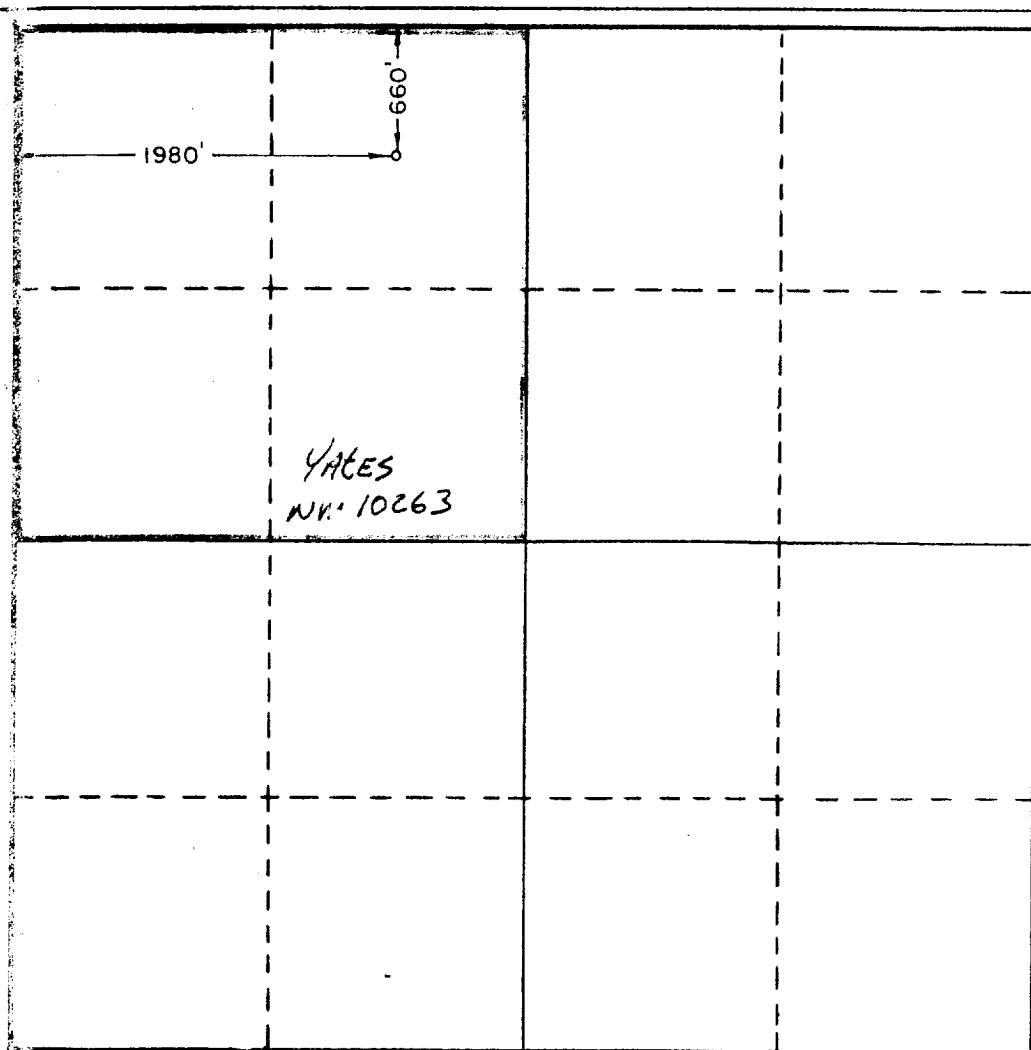
Operator YATES PETROLEUM CORPORATION			Lease Thomas LN Federal		Well No. 4
Unit Letter C	Section 10	Township 6 South	Range 25 East	County Chaves	
Actual Footage Location of Well: 660' feet from the North line and 1980 feet from the West line					
Ground Level Elev. 3955.5'	Producing Formation ABO		Pool UNDES ABO	Dedicated Acreage: 160 Acres	

1. Outline the acreage dedicated to the subject well by colored pencil or hachure marks on the plat below.
2. If more than one lease is dedicated to the well, outline each and identify the ownership thereof (both as to working interest and royalty).
3. If more than one lease of different ownership is dedicated to the well, have the interests of all owners been consolidated by communitization, unitization, force-pooling, etc?

☐ Yes ☒ No If answer is "yes," type of consolidation \_\_\_\_\_

If answer is "no," list the owners and tract descriptions which have actually been consolidated. (Use reverse side of this form if necessary.) \_\_\_\_\_

No allowable will be assigned to the well until all interests have been consolidated (by communitization, unitization, forced-pooling, or otherwise) or until a non-standard unit, eliminating such interests, has been approved by the Commission.



CERTIFICATION

I hereby certify that the information contained herein is true and complete to the best of my knowledge and belief.

Name  
Cey Cowan  
Position  
REG Coordinator  
Company  
YATES Petroleum Corp  
Date  
11/16/81

I hereby certify that the well location shown on this plat was plotted from field notes of actual surveys made by me or under my supervision, and that the same is true and correct to the best of my knowledge and belief.

Date Surveyed  
October 28, 1981

Registered Professional Engineer  
and/or Land Surveyor

Certificate No  
3640

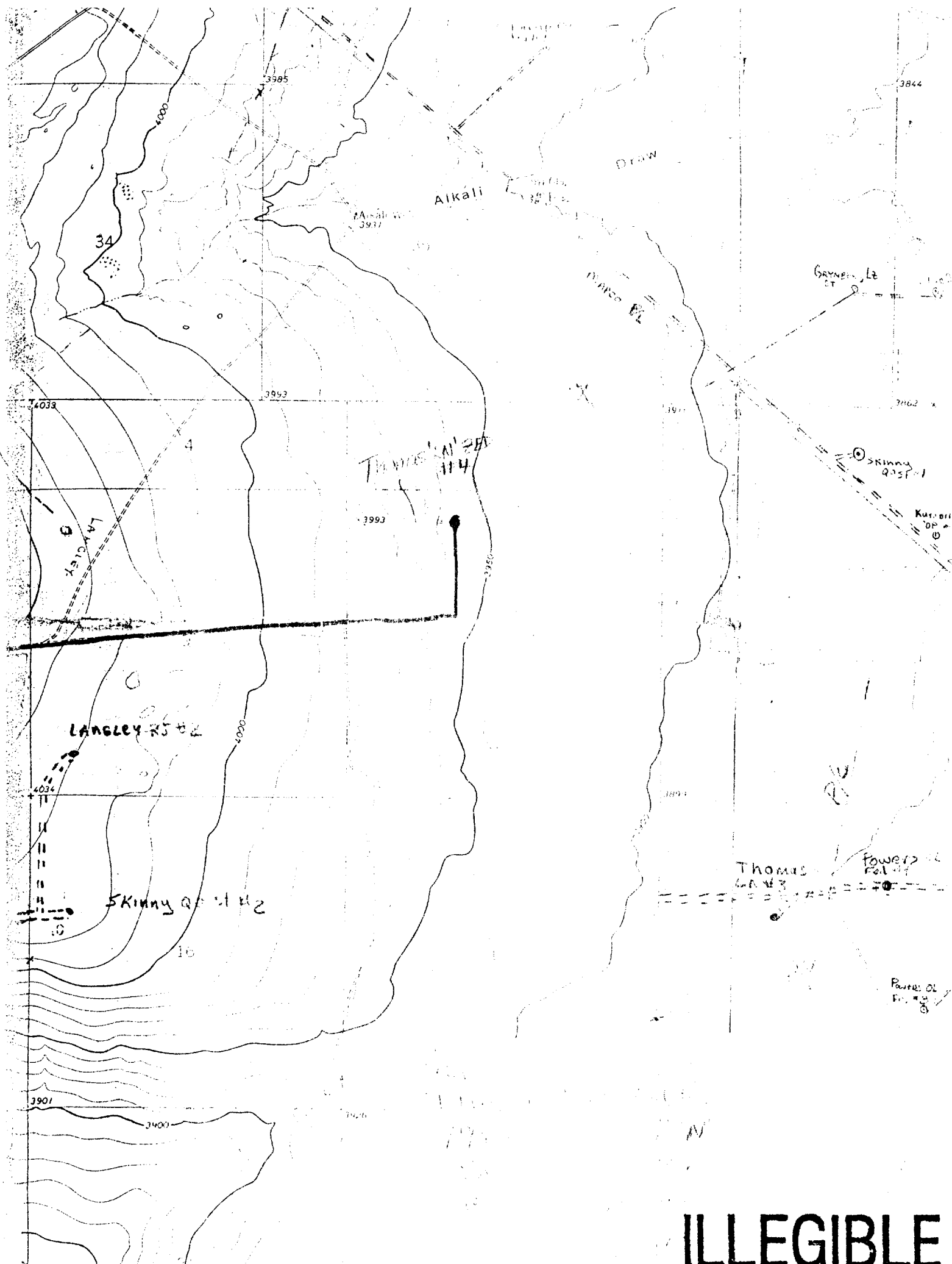
Yates Petroleum Corporation  
Thomas "LN" Federal #4  
660' FNL & 1980' FWL  
Section 10-T6s-R25e  
Chaves County, New Mexico

In conjunction with Form 9-331C, Application for Permit to Drill subject well, Yates Petroleum Corporation submits the following ten items of pertinent information in accordance with USGS requirements:

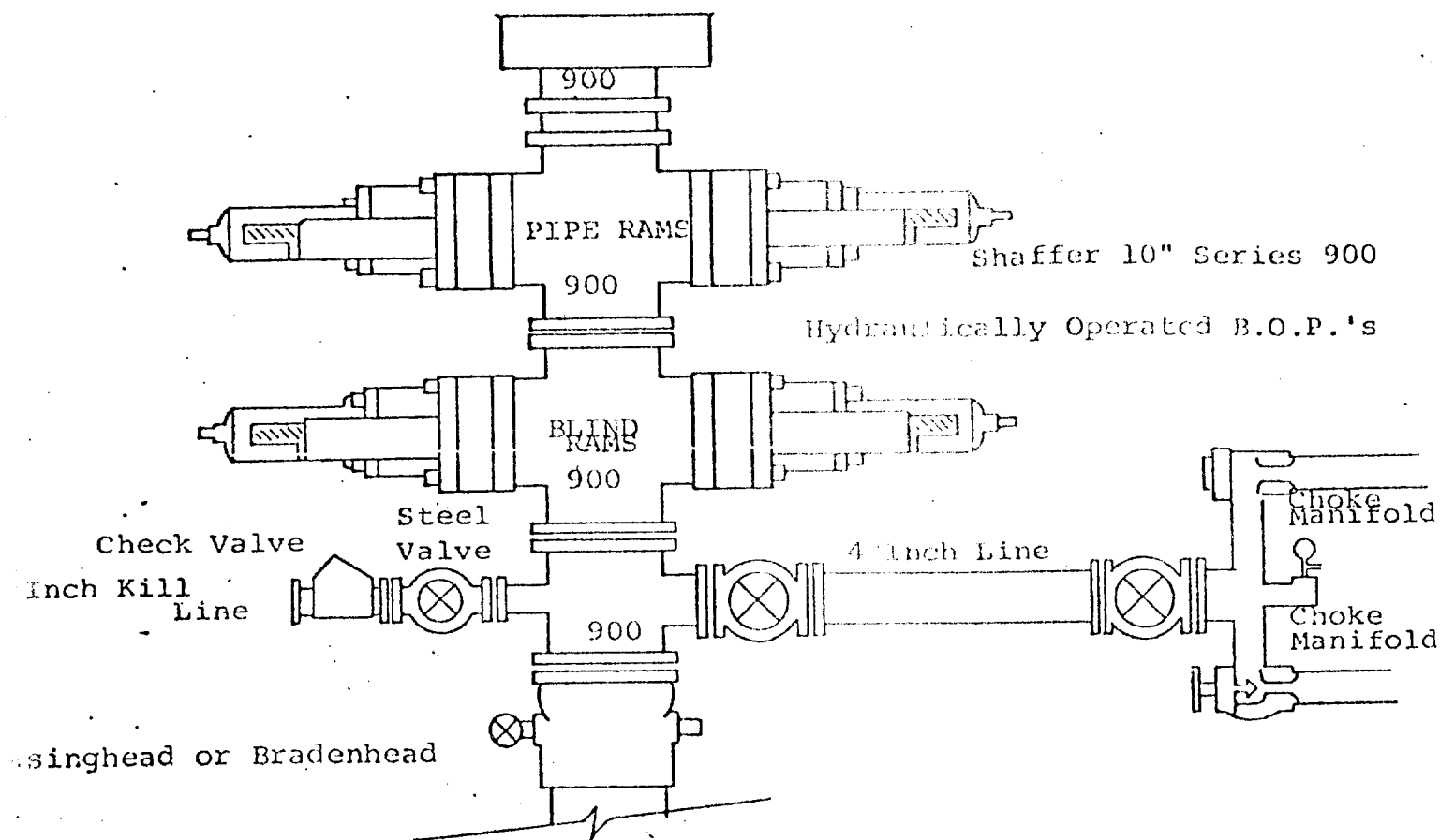
1. The geologic surface formation is sandy alluvium.
2. The estimate tops of geologic markers are as follows:

San Andres	562'
Glorietta	1583'
Fullerton	3013'
Abo	3646'
TD	4225'
3. The estimated depths at which anticipated water, oil or gas formations are expected to be encountered:  
Water: Approximately 370' 520'  
Gas: 3670' - 4175'
4. Proposed Casing Program: See Form 9-331C.
5. Pressure Control Equipment: See Form 9-331C.
6. Mud Program: See Form 9-331C.
7. Auxililary Equipment: As required
8. Testing, Logging and Coring Program:

Samples:	Surface casing to TD.
DST's:	None
Logging:	GRN surface to TD
Coring:	None
9. No abnormal pressures or temperatures are anticipated.
10. Anticipated starting date: As soon as approved.



# EXHIBIT B



## THE FOLLOWING CONSTITUTE MINIMUM BLOWOUT PREVENTER REQUIREMENTS

- 1. All preventers to be hydraulically operated with secondary manual controls installed prior to drilling out from under casing.
- 2. Choke outlet to be a minimum of 4" diameter.
- 3. Kill line to be of all steel construction of 2" minimum diameter.
- 4. All connections from operating manifolds to preventers to be all steel, hole or tube a minimum of one inch in diameter.
- 5. The available closing pressure shall be at least 15% in excess of that required with sufficient volume to operate the B.O.P.'s.
- 6. All connections to and from preventer to have a pressure rating equivalent to that of the B.O.P.'s.
- 7. Inside blowout preventer to be available on rig floor.
- 8. Operating controls located a safe distance from the rig floor.
- 9. Hole must be kept filled on trips below intermediate casing. Operator not responsible for blowouts resulting from not keeping hole full.
- 10. D. P. float must be installed and used below zone of first gas intrusion.