

UNITED STATES
DEPARTMENT OF THE INTERIOR
GEOLOGICAL SURVEY

OIL CONSERVATION COMMISSION
Power DD
Artesia, NM 88210

Form approved.
Budget Bureau No. 42-R1425.

APPLICATION FOR PERMIT TO DRILL, DEEPEN, OR PLUG BACK

1a. TYPE OF WORK
DRILL ☒ DEEPEN ☐ PLUG BACK ☐

b. TYPE OF WELL
OIL WELL ☐ GAS WELL ☒ OTHER ☐
SINGLE ZONE ☒ MULTIPLE ZONE ☐

2. NAME OF OPERATOR
Transwestern Gas Supply Company

3. ADDRESS OF OPERATOR
P. O. Box 2521 Houston TX 77001

4. LOCATION OF WELL (Report location clearly and in accordance with any State requirements.)
At surface 1980 ft. from South ~~line~~ line and 1980 ft. from West ~~line~~ line
At proposed prod. zone same

14. DISTANCE IN MILES AND DIRECTION FROM NEAREST TOWN OR POST OFFICE*
28 miles North of Roswell

10. DISTANCE FROM PROPOSED* LOCATION TO NEAREST PROPERTY OR LEASE LINE, FT. (Also to nearest drig. unit line, if any) 1980 ft.

18. DISTANCE FROM PROPOSED LOCATION* TO NEAREST WELL, DRILLING, COMPLETED, OR APPLIED FOR, ON THIS LEASE, FT. None
1,5050 ft.

21. ELEVATIONS (Show whether DF, RT, GR, etc.)
3975' G.L. 3972' GL

23. PROPOSED CASING AND CEMENTING PROGRAM

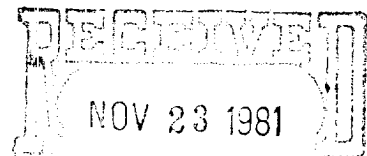
SIZE OF HOLE	SIZE OF CASING	WEIGHT PER FOOT	SETTING DEPTH	QUANTITY OF CEMENT
17 1/2	13 3/8	54.5# 48.0K-55	60'	redimix
12 1/4	8 5/8	24.0# K-55	1600-1800'+	± 950 sx (circulate)
7 7/8	4 1/2	10.5# J-55	TD	± 225 sx

13 3/8" Casing Set two joints with rat hole machine and grout to surface.

8 5/8" Casing 350 sx Thixset - Class C containing 8-10#sx Gilsonite, 1/4#sx celoflake, 4% CaCl₂, 600 sx 50-50 Poz Class C w/2% CaCl₂-Total 950 sx.

4 1/2" Casing Approximately 250 sx Pozmix- Class C w 2% gel. 8# sx salt and 0.4% CFR-2 friction reducer

GAS IS DEDICATED.



IN ABOVE SPACE DESCRIBE PROPOSED PROGRAM: If proposal is to deepen or plug back, give data on present productive zone and proposed new productive zone. If proposal is to drill or deepen directionally, give pertinent data on subsurface locations and measured and true vertical depths. Give blowout preventer program, if any.

24. SIGNED [Signature] J. Deffner TITLE Manager, US Onshore Prod. DATE 10-28-81
(This space for Federal or State office use)

PERMIT NO. **APPROVED** APPROVAL DATE
APPROVED BY [Signature] TITLE DATE
CONDITIONS OF APPROVAL, IF ANY:
NOV 25 1981
JAMES A. OILHAM
DISTRICT SUPERVISOR
*See Instructions On Reverse Side

Posted ID
API + AL Bomb
12-4-81

OIL CONSERVATION DIVISION

STATE OF NEW MEXICO
ENERGY AND MINERALS DEPARTMENTP. O. BOX 2088
SANTA FE, NEW MEXICO 87501Form C-102
Revised 10-1-78

All distances must be from the outer boundaries of the Section.

Operator Transwestern Gas Supply Company			Lease Five Mile Tank Federal			Well No. 1		
Unit Letter K	Section 13	Township 6 South		Range 23 East	County Chaves			
Actual Postage Location of Well: 1980 feet from the South line and 1980 feet from the West line								
Ground Level Elev. 3972		Producing Formation ABO		Pool Undesignated Abo		Dedicated Acreage: 160 Acres		

1. Outline the acreage dedicated to the subject well by colored pencil or hachure marks on the plat below.
2. If more than one lease is dedicated to the well, outline each and identify the ownership thereof (both as to working interest and royalty).
3. If more than one lease of different ownership is dedicated to the well, have the interests of all owners been consolidated by communitization, unitization, force-pooling, etc?

☐ Yes ☐ No If answer is "yes," type of consolidation _____

If answer is "no," list the owners and tract descriptions which have actually been consolidated. (Use reverse side of this form if necessary.) _____

No allowable will be assigned to the well until all interests have been consolidated (by communitization, unitization, forced-pooling, or otherwise) or until a non-standard unit, eliminating such interests, has been approved by the Division.

Sec. 13, T. 6 S., R. 23 E., N.M.P.M.

NM 32323

1980'

1980'

CERTIFICATION

I hereby certify that the information contained herein is true and complete to the best of my knowledge and belief.

Name
JERRY W. LONGPosition
AgentCompany
TRANSWESTERN GAS SUPPLY CO.Date
November 19, 1981

I hereby certify that the well location shown on this plat was plotted from field notes of actual surveys made by me or under my supervision, and that the same is true and correct to the best of my knowledge.

Date Surveyed
6290
November 3, 1981

Registered Professional Engineer and/or Land Surveyor

John D. Jaquess, P.E. & L.S.
Certificate No.

6290

SUPPLEMENTAL DRILLING DATA

TRANSWESTERN GAS SUPPLY COMPANY
No.1 Fivemile Tank Federal
NE $\frac{1}{4}$ SW $\frac{1}{4}$ Sec.13-6S-23E
Chaves County, N.M.

NM 32323

The following items supplement Form 9-331C in accordance with instructions contained in NTL-6.

1. SURFACE FORMATION: Seven Rivers Formation of Artesia Group
2. ESTIMATED TOPS OF GEOLOGIC MARKERS:

Seven Rivers	- surface	Tubb	- 3022'
San Andres	- 554'	Abo	- 3667'
Glorietta	- 1464'		
3. ESTIMATED DEPTHS TO WATER, OIL OR GAS FORMATION:

Water	- Surface to 300'
Gas	- 3650' to 4000'
4. PROPOSED CASING PROGRAM: See Form 9-331C
5. PRESSURE CONTROL EQUIPMENT: Blowout preventer stack will consist of a double-ram blowout preventer and rotating head rated to 3000#WP. A sketch of the BOP is attached.
6. CIRCULATING MEDIUM: Hole for 13 3/8" conductor pipe will be drilled with a rat hole auger. Air will be used as the circulating medium for the remainder of the drilling. It is anticipated that a foam additive will be necessary until the intermediate casing is cemented.
7. AUXILIARY EQUIPMENT: Full-opening kelly cock, to fit the drill string in use, will be kept on the rig floor at all times.
8. TESTING, LOGGING AND CORING PROGRAM:

Samples:	Surface casing shoe to TD
DST's:	None anticipated
Logging:	Gamma Ray-Neutron log and other logs as recommended by well-site geologist
Coring:	None anticipated
9. ABNORMAL PRESSURES, TEMPERATURES OR HYDROGEN SULFIDE: None anticipated. Maximum bottom-hole pressure should not exceed 1500 psi. Bottom-hole temperature will be about 110°F.

10. ANTICIPATED STARTING DATE: Drilling will commence about November 23, 1981. Drilling should be completed within 10 days. Completion operations (perforations and stimulation) will follow drilling operations.

TW GAS SUPPLY CO.
No.1 Fivemile Tank Federal
NE $\frac{1}{4}$ SW $\frac{1}{4}$ Sec.13-6S-23E
Chaves County, N.M.

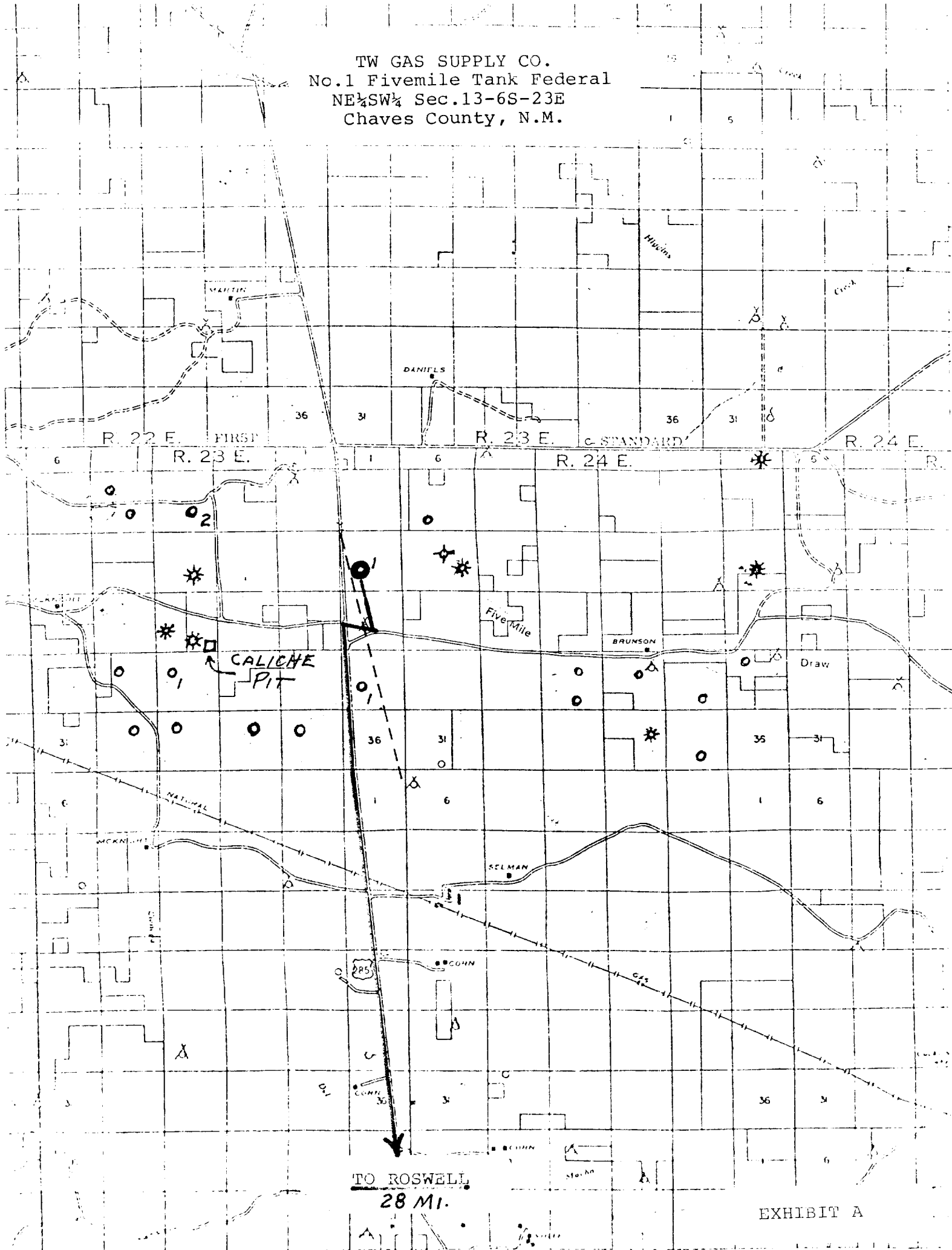


EXHIBIT "D"

B O P PROGRAM

SPACESAVER - B O P and ROTATING HEAD

