

MEXICO OIL CONSERVATION COMMISSION
WELL LOCATION AND ACREAGE DEDICATION PLAT

Form C-102
Supersedes C-128
Effective 10-65

All distances must be from the outer boundaries of the Section

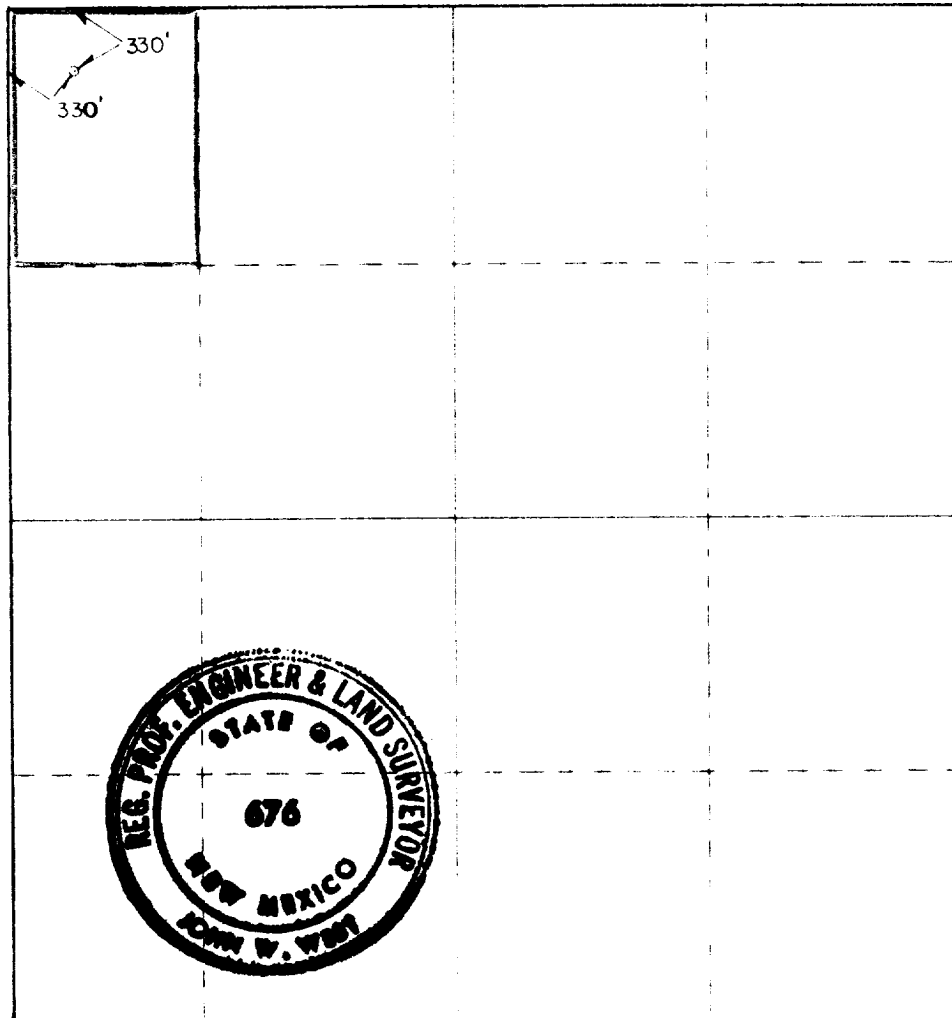
Operator The Harlow Corp.		Lease <i>O'Brien Daming</i> O'Brien 17		Well No. 2
Tract Letter D	Section 17	Township 8 South	Range 29 East	County Chaves
Actual Footage Location of Well:				
330 feet from the North line and		330 feet from the West line		
Ground Level Elev. 4036.5	Producing Formation San Andres	Pool <i>and</i> Twin Lakes 5 A Assoc.	Lease Acres & Containing 40	

- Outline the acreage dedicated to the subject well by colored pencil or hatchure marks on the plat below.
- If more than one lease is dedicated to the well, outline each and identify the ownership thereof (both as to working interest and royalty).
- If more than one lease of different ownership is dedicated to the well, have the interests of all owners been consolidated by communitization, unitization, force-pooling, etc?

☒ Yes ☐ No If answer is "yes," type of consolidation Farmouts

If answer is "no," list the owners and tract descriptions which have actually been consolidated (Use reverse side of this form if necessary.)

No allowable will be assigned to the well until all interests have been consolidated (by communitization, unitization, forced-pooling, or otherwise) or until a non-standard unit, eliminating such interests, has been approved by the Commission.



CERTIFICATION

I hereby certify that the information contained herein is true and complete to the best of my knowledge and belief.

W.B. LaFon

W.B. LaFon

Production Engineer

THE HARLOW CORPORATION

11/23/81

I hereby certify that the well location shown on this plat was plotted from field notes of actual surveys made by me or under my supervision, and that the same is true and correct to the best of my knowledge and belief.

Date Surveyed 11/18/81

Registered Professional Engineer

John W. West

Certificate No. **JOHN W. WEST 676**
PATRICK A. ROMERO 6863
Record & Edition **3239**

