

UNITED STATES
DEPARTMENT OF THE INTERIOR
GEOLOGICAL SURVEYSUBMIT IN DUPLICATE*
(Other instructions on
reverse side)Form approved.
Budget Bureau No. 42-R1425.

30-005-61262

APPLICATION FOR PERMIT TO DRILL, DEEPEN, OR PLUG BACK

1a. TYPE OF WORK

DRILL ☒DEEPEN ☐PLUG BACK ☐

b. TYPE OF WELL

OIL
WELL ☐GAS
WELL ☒OTHER ☐SINGLE
ZONE ☒MULTIPLE
ZONE ☐

2. NAME OF OPERATOR

SANDERS PETROLEUM CORPORATION

DEC 9 1981

3. ADDRESS OF OPERATOR

11000-D Spain Rd., N.E., Albuquerque, N.M. 87111

4. LOCATION OF WELL (Report location clearly and in accordance with any State requirements.)*

At surface

990/N

660/E

Sec.31-5S-24E

At proposed prod. zone

Same

14. DISTANCE IN MILES AND DIRECTION FROM NEAREST TOWN OR POST OFFICE*

About 30 miles north-northeast of Roswell, N.M.

15. DISTANCE FROM PROPOSED*
LOCATION TO NEAREST
PROPERTY OR LEASE LINE, FT.
(Also to nearest drlg. unit line, if any)

660'

16. NO. OF ACRES IN LEASE

320

17. NO. OF ACRES ASSIGNED
TO THIS WELL

160

18. DISTANCE FROM PROPOSED LOCATION*
TO NEAREST WELL, DRILLING, COMPLETED,
OR APPLIED FOR, ON THIS LEASE, FT.

3990'

19. PROPOSED DEPTH

4400'

20. ROTARY OR CABLE TOOLS

Rotary

21. ELEVATIONS (Show whether DF, RT, GR, etc.)

4170 GL

22. APPROX. DATE WORK WILL START*

December 10, 1981

23.

PROPOSED CASING AND CEMENTING PROGRAM

SIZE OF HOLE	SIZE OF CASING	WEIGHT PER FOOT	SETTING DEPTH	QUANTITY OF CEMENT
14 3/4"	10 3/4"	40.5# H40	850'	600 sx - Circulate
* 11"	7 5/8"	26.4# K55	1580'	700 sx TIE BACK TO 10 3/4"
7 7/8"	4 1/2"	10.5# K55	4400'	400 sx - To Isolate Oil, Gas And Water Zones

*7 5/8" casing will not be run unless hole conditions require an intermediate string.

Propose to drill to approximately 4400' to test Abo and intermediate formations.

See attached "Supplemental Drilling Data" and NTL-6 requirements.

Gas not dedicated.

IN ABOVE SPACE DESCRIBE PROPOSED PROGRAM: If proposal is to deepen or plug back, give data on present productive zone and proposed new productive zone. If proposal is to drill or deepen directionally, give pertinent data on subsurface locations and measured and true vertical depths. Give blowout preventer program, if any.

24.

SIGNED

JERRY W. LONG

TITLE

Agent

DATE December 1, 1981

(This space for Federal or State office use)

PERMIT NO.

APPROVED

APPROVAL DATE

APPROVED BY

TITLE

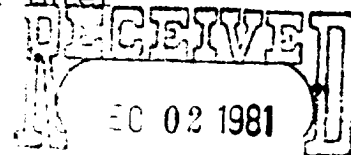
DATE

CONDITIONS OF APPROVAL, IF ANY

DEC 8 1981

JAMES A. GILLHAM
DISTRICT SUPERVISOR

*See Instructions On Reverse Side



All distances must be from the outer boundaries of the Section.

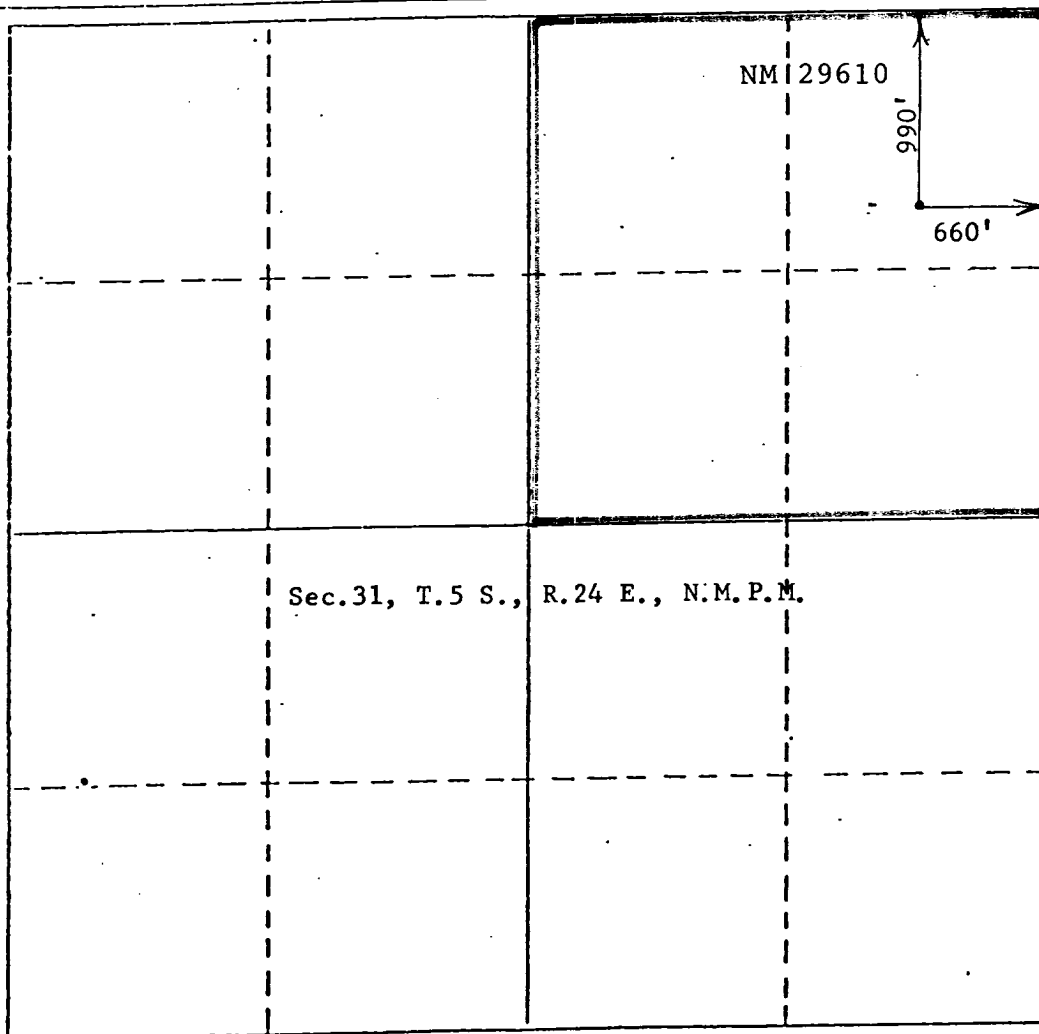
Operator Sanders Petroleum Corp.			Lease Huggins Draw		Well No. #2
Unit Letter A	Section 31,	Township 5 South	Range 24 East	County Chaves	
Actual Footage Location of Well:					
660 feet from the		East	line and	990 feet from the	North line
Ground Level Elev. 4170	Producing Formation Abo		Pool Undesignation Abo		Dedicated Acreage: 160 Acres

1. Outline the acreage dedicated to the subject well by colored pencil or hatchure marks on the plat below.
2. If more than one lease is dedicated to the well, outline each and identify the ownership thereof (both as to working interest and royalty). Single Lease
3. If more than one lease of different ownership is dedicated to the well, have the interests of all owners been consolidated by communitization, unitization, force-pooling, etc?

☐ Yes ☐ No If answer is "yes," type of consolidation _____

If answer is "no," list the owners and tract descriptions which have actually been consolidated. (Use reverse side of this form if necessary.) _____

No allowable will be assigned to the well until all interests have been consolidated (by communitization, unitization, forced-pooling, or otherwise) or until a non-standard unit, eliminating such interests, has been approved by the Division.

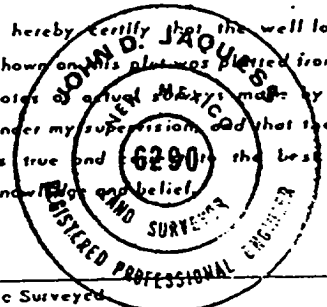


CERTIFICATION

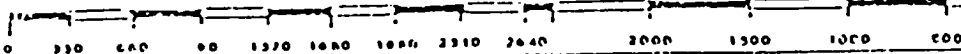
I hereby certify that the information contained herein is true and complete to the best of my knowledge and belief.

Name
JERRY W. LONG
Position
Agent
Company
SANDERS PETROLEUM CORP.
Date
December 1, 1981

I hereby certify that the well location shown on this plat was plotted from field notes of actual survey made by me or under my supervision and that the same is true and correct to the best of my knowledge and belief.



Date Surveyed
November 20, 1981
Registered Professional Engineer and/or Land Surveyor
John D. Jaquess, P.E. & L.S.
Certificate No.
6290



SUPPLEMENTAL DRILLING DATA

SANDERS PETROLEUM CORPORATION
No.2 Huggins Draw
NE $\frac{1}{4}$ NE $\frac{1}{4}$ Sec.31-5S-24E
Chaves County, N.M.

NM 29610

The following items supplement Form 9-331C in accordance with instructions contained in NTL-6.

1. SURFACE FORMATION: Permian Artesia Group
2. ESTIMATED TOPS OF GEOLOGIC MARKERS:

San Andres	500'	Yeso	1550'
Slaughter	650'	Abo	3650'
Glorietta	1480'		
3. ESTIMATED DEPTHS TO WATER, OIL OR GAS FORMATIONS:

Fresh water	Surface to 200'
Salt water	1480' to total depth
Gas	3650' to total depth
4. PROPOSED CASING PROGRAM: See Form 9-331C
5. PRESSURE CONTROL EQUIPMENT: Blowout preventer stack will consist of at least a double-ram blowout preventer rated to 3000#WP. A sketch of the BOP is attached.
6. CIRCULATING MEDIUM: Well will be drilled with mud.

0 - 850'	Fresh water native mud + LC material.
850' - 3400'	Salt gel mud + LC material.
3400' - TD	Salt gel + 7% diesel + additives recommended by mud engineer.
7. AUXILIARY EQUIPMENT: Full-opening kelly cock, to fit the drill string in use, will be kept on the rig floor at all times.
8. TESTING, LOGGING AND CORING PROGRAM: No coring or drillstem tests are planned for this well. It is planned to run a Gamma Ray-Neutron log from surface casing to TD and other logs recommended by the wellsite geologist.

9. ABNORMAL PRESSURES, TEMPERATURES OR HYDROGEN SULFIDE: None anticipated. Maximum bottom-hole pressure should not exceed 1500 psi. Bottom hole temperature will be about 110°F.
10. ANTICIPATED STARTING DATE: Drilling will commence about December 10, 1981. Drilling should be completed within 10 days. Completion operations (perforations and stimulation) will follow drilling operations.

SANDERS PETROLEUM CORP.
No.2 Huggins Draw
NE $\frac{1}{4}$ NE $\frac{1}{4}$ Sec.31-5S-24E
Chaves County, N.M.

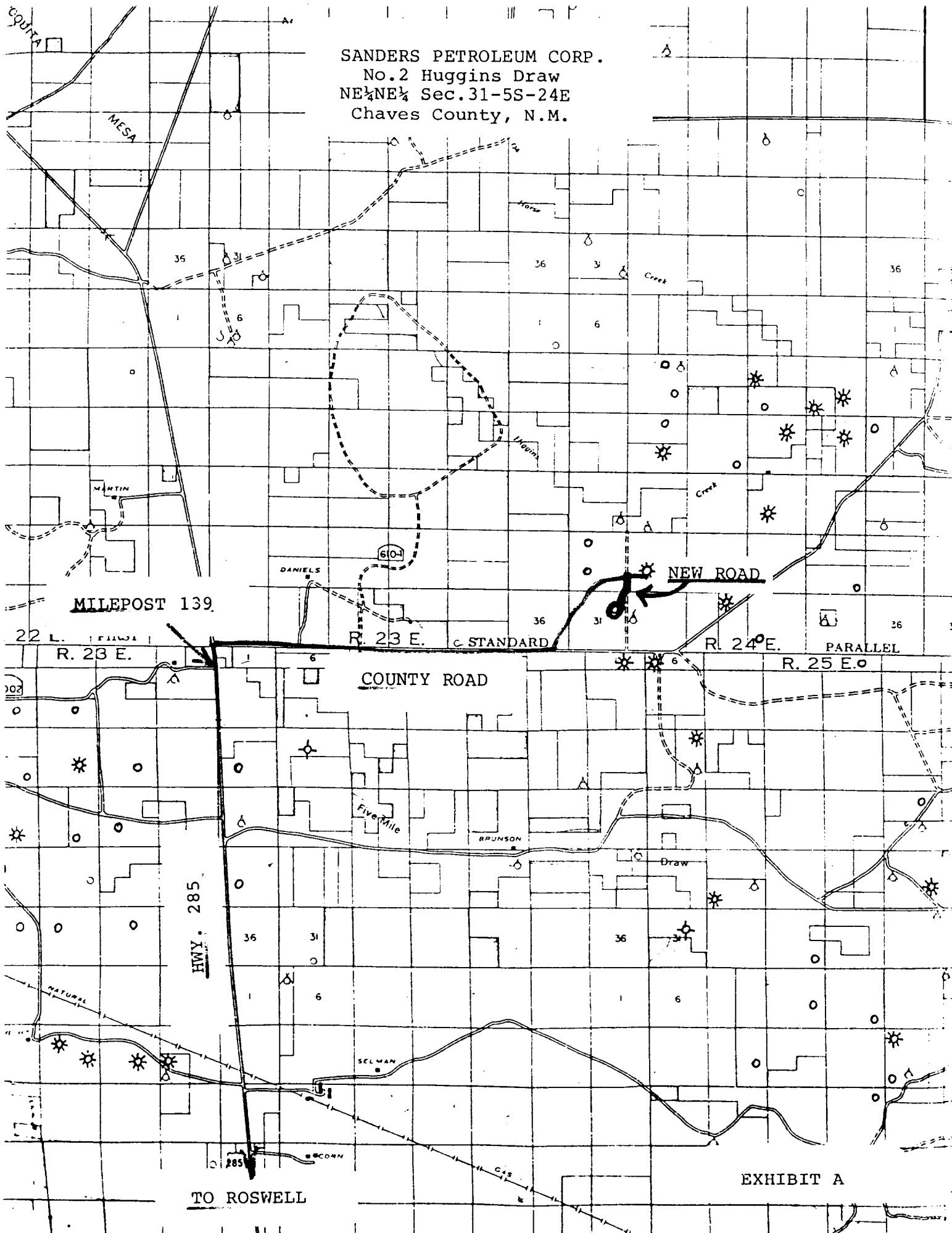
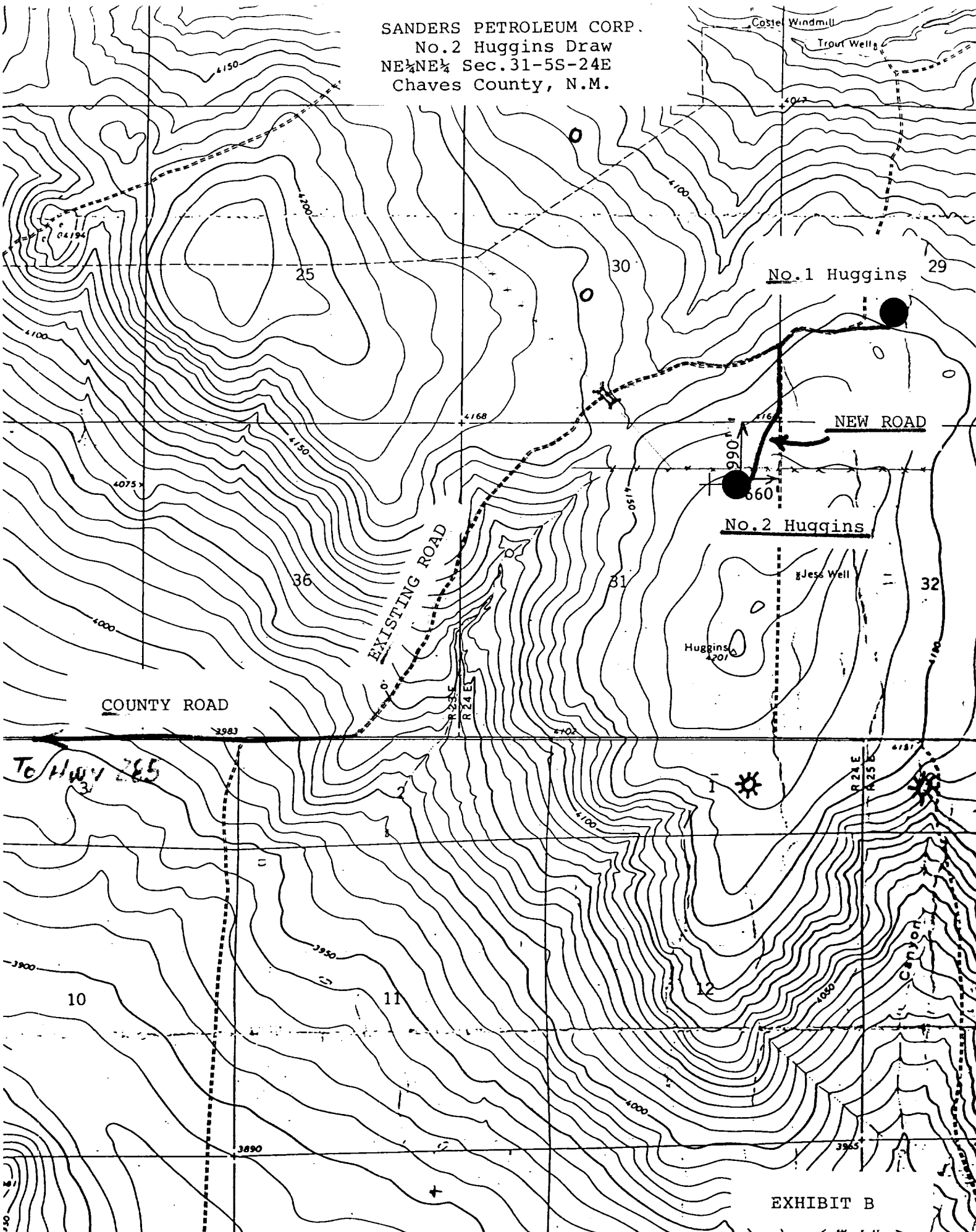
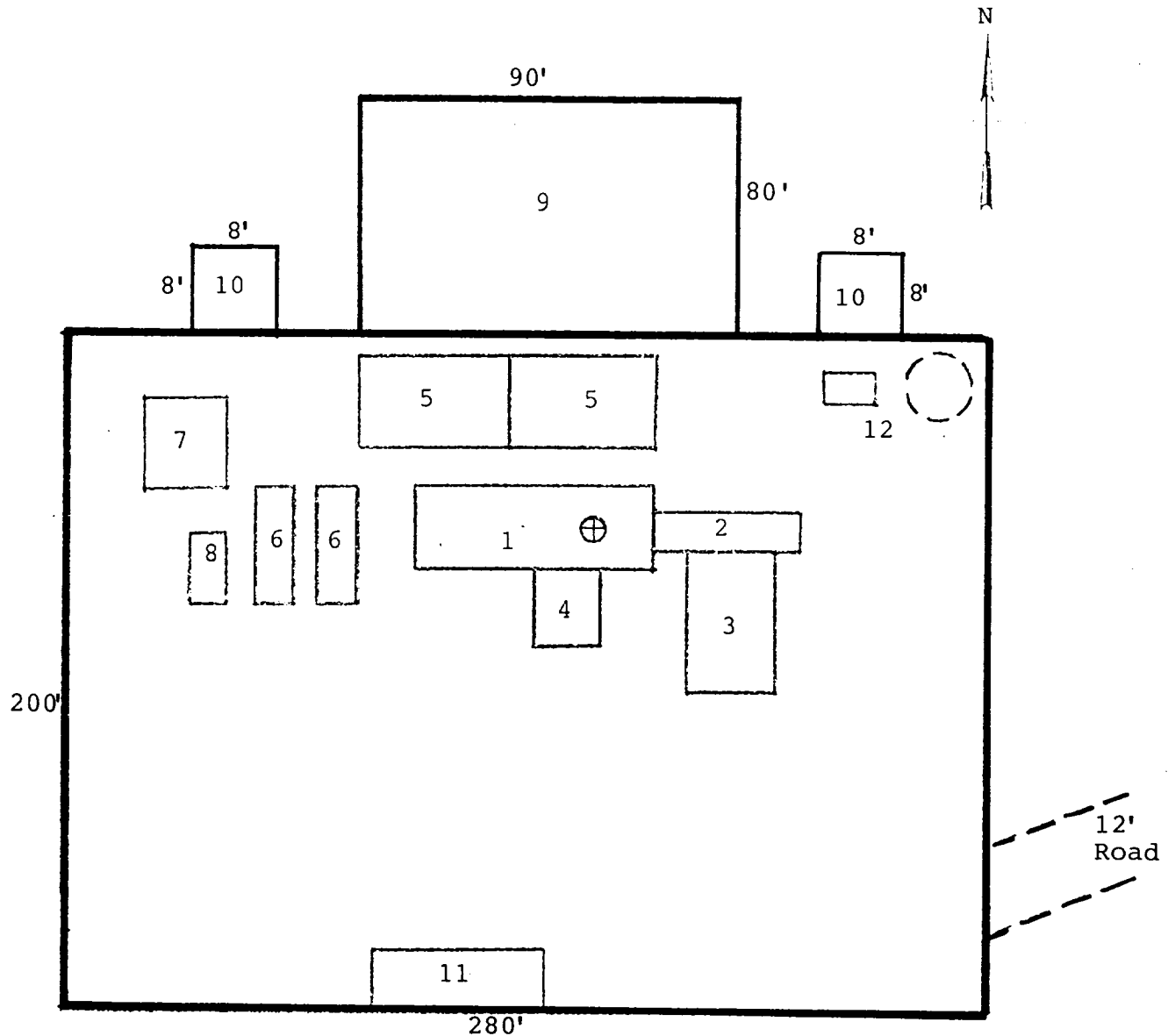


EXHIBIT A

SANDERS PETROLEUM CORP.
No.2 Huggins Draw
NE $\frac{1}{4}$ NE $\frac{1}{4}$ Sec.31-5S-24E
Chaves County, N.M.



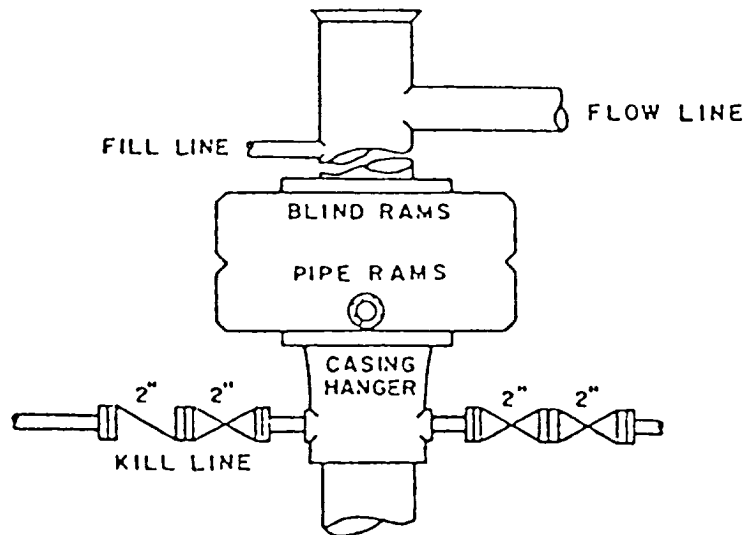
SANDERS PETROLEUM CORPORATION
 No.2 Huggins Draw
 NE¼NE¼ Sec.31-5S-24E
 Chaves County, N.M.



RIG LAYOUT

- | | |
|-----------------|---------------------------|
| 1. Substructure | 7. Water Tank |
| 2. Catwalk | 8. Light Plant |
| 3. Pipe Rack | 9. Reserve Pit |
| 4. Doghouse | 10. Trash Pit |
| 5. Mud Pits | 11. Trailer House |
| 6. Mud Pumps | 12. Production Facilities |

No.2 Huggins Draw
NE $\frac{1}{4}$ NE $\frac{1}{4}$ Sec.31-5S-24E
Chaves County, N.M.



BOP STACK

3000 PSI WORKING PRESSURE