

NM OIL CONS. COMMISSION

Drawer DD

Artesia, N. 88210

UNITED STATES
DEPARTMENT OF THE INTERIOR

GEOLOGICAL SURVEY

SUBMIT IN TRIPLICATE

(Other instr. on
reverse side)Form approved.
Budget Bureau No. 42-R1425.

8 DEC 8 30-005-61263

5. LEASE DESIGNATION AND SERIAL NO.

NM 10588

6. IF INDIAN, ALLOTTEE OR TRIBE NAME

7. UNIT AGREEMENT NAME

8. FARM OR LEASE NAME

George OJ Fed.

9. WELL NO.

#3

10. FIELD AND POOL, OR WILDCAT

X Wildcat U.S. Fed.

11. SEC., T., R., M., OR BLK.
AND SURVEY OR AREA

Sec. 25-T6s-R25e

12. COUNTY OR PARISH 13. STATE

Chaves

NM

1a. TYPE OF WORK

DRILL ☒DEEPEN ☐PLUG BACK ☐

b. TYPE OF WELL

OIL
WELL ☐GAS
WELL ☒

OTHER

SINGLE
ZONE ☐MULTIPLE
ZONE ☐

2. NAME OF OPERATOR

Yates Petroleum Corporation

3. ADDRESS OF OPERATOR

207 South 4th Street, Artesia, NM 88210

4. LOCATION OF WELL (Report location clearly and in accordance with all State requirements)

At surface

1830'

1980'

FSL & 660' FWL

At proposed prod. zone

14. DISTANCE IN MILES AND DIRECTION FROM NEAREST TOWN OR POST OFFICE

Approx. 32 miles N NE of Roswell, NM

OIL & GAS
U.S. GEOLOGICAL SURVEY
ROSWELL, NEW MEXICO

15. DISTANCE FROM PROPOSED*

LOCATION TO NEAREST
PROPERTY OR LEASE LINK, FT.

(Also to nearest drlg. unit line, if any)

660

16. NO. OF ACRES IN LEASE

640

17. NO. OF ACRES ASSIGNED
TO THIS WELL

160

18. DISTANCE FROM PROPOSED LOCATION*

TO NEAREST WELL, DRILLING, COMPLETED,
OR APPLIED FOR, ON THIS LEASE, FT.

19. PROPOSED DEPTH

4225'

20. ROTARY OR CABLE TOOLS

Rotary

21. ELEVATIONS (Show whether DF, RT, GR, etc.)

3765.8 GL

22. APPROX. DATE WORK WILL START*

ASAP

23.

PROPOSED CASING AND CEMENTING PROGRAM

SIZE OF HOLE	SIZE OF CASING	WEIGHT PER FOOT	SETTING DEPTH	QUANTITY OF CEMENT
15"	10 3/4"	40.5# J-55	Approx. 900'	800 sx. circulated
7 7/8" or 6 1/2"	4 1/2" or 5 1/2"	10.5# or 15.5#	TD	350 sx.

We propose to drill and test the Abo and intermediate formations. Approximately 900' of surface casing will be set and cement circulated to shut off gravel and casing. If needed (lost circulation) 7 5/8" intermediate casing will be run to 1500' and cemented with enough cement calculated to tie back into the surface casing. Temperature survey will be run to determine cement top. If commercial, production casing will be run and cemented with adequate cover, perforate, and stimulate as needed for production.

MUD PROGRAM: FW gel and LCM 1500' Brine to 3500'. Salt Gel and Starch to TD.
Vis. 50 W.L. 10-15

BOP PROGRAM: BOP's will be installed at approximately 1500' and tested daily.

GAS NOT DEDICATED.

IN ABOVE SPACE DESCRIBE PROPOSED PROGRAM: If proposal is to deepen or plug back, give data on present productive zone and proposed new productive zone. If proposal is to drill or deepen directionally, give pertinent data on subsurface locations and measured and true vertical depths. Give blowout preventer program, if any.

24.

SIGNED

TITLE Regulatory Manager

DATE 11-18-81

(This space for Federal or State official use)

PERMIT NO.

APPROVED

APPROVAL DATE

AS AMENDED

APPROVED BY

DEC 4 1981

TITLE

DATE

CONDITIONS OF APPROVAL

JAMES A. GILLHAM
DISTRICT SUPERVISOR

**NEW MEXICO OIL CONSERVATION COMMISSION
WELL LOCATION AND ACREAGE DEDICATION PLAT**

Form C-102
Supersedes C-128
Effective 1-1-65

All distances must be from the outer boundaries of the Section.

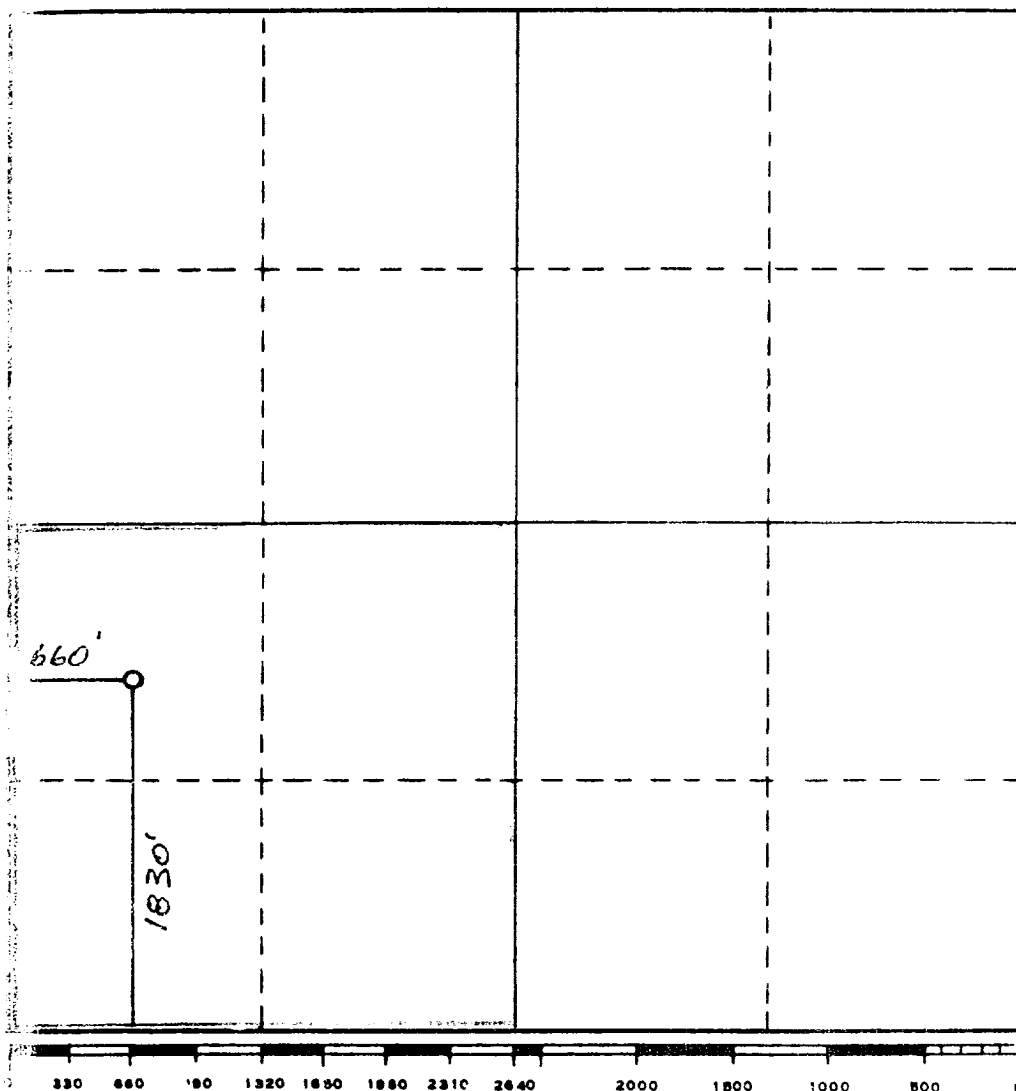
Operator Yates Petroleum Corporation			Lease George "00" Federal		Well No. 3
Well Letter L	Section 25	Township 6S	Range 25E	County Chaves	
Actual Footage Location of Well: 1830 feet from the South line and 660 feet from the West line					
Ground Level Elev. 3763'	Producing Formation Alamo		Pool George "00" Federal		Dedicated Acreage: Acres

1. Outline the acreage dedicated to the subject well by colored pencil or hachure marks on the plat below.
2. If more than one lease is dedicated to the well, outline each and identify the ownership thereof (both as to working interest and royalty).
3. If more than one lease of different ownership is dedicated to the well, have the interests of all owners been consolidated by communitization, unitization, force-pooling, etc?

☐ Yes ☐ No If answer is "yes," type of consolidation _____

If answer is "no," list the owners and tract descriptions which have actually been consolidated. (Use reverse side of this form if necessary.) _____

No allowable will be assigned to the well until all interests have been consolidated (by communitization, unitization, forced-pooling, or otherwise) or until a non-standard unit, eliminating such interests, has been approved by the Commission.

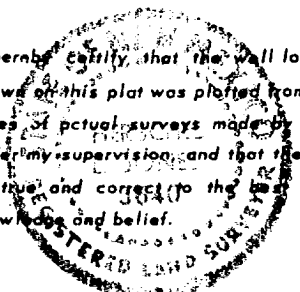


CERTIFICATION

I hereby certify that the information contained herein is true and complete to the best of my knowledge and belief.

Name [Signature]
Position [Signature]
Company [Signature]
Date [Signature]

I hereby certify that the well location shown on this plat was plotted from field notes of actual surveys made by me or under my supervision and that the same is true and correct to the best of my knowledge and belief.



Date Surveyed [Signature]
Registered Professional Engineer and/or Land Surveyor [Signature]
Certificate No. 3640

UNITED STATES
DEPARTMENT OF THE INTERIOR
GEOLOGICAL SURVEY

SUNDRY NOTICES AND REPORTS ON WELLS

(Do not use this form for proposals to drill or to deepen or plug back to a different reservoir. Use Form 9-331-C for such proposals.)

1. oil ☐ gas ☒ other ☐

2. NAME OF OPERATOR

Yates Petroleum Corporation

3. ADDRESS OF OPERATOR

207 South 4th Street, Artesia, NM

4. LOCATION OF WELL (REPORT LOCATION CLEARLY. See space 17 below.)

AT SURFACE: 1830 FSL & 660 FWL

AT TOP PROD. INTERVAL:

AT TOTAL DEPTH: same

16. CHECK APPROPRIATE BOX TO INDICATE NATURE OF NOTICE, REPORT, OR OTHER DATA

REQUEST FOR APPROVAL TO:

SUBSEQUENT REPORT OF:

TEST WATER SHUT-OFF ☐

FRACTURE TREAT ☐

SHOOT OR ACIDIZE ☐

REPAIR WELL ☐

PULL OR ALTER CASING ☐

MULTIPLE COMPLETE ☐

CHANGE ZONES ☐

ABANDON* ☐

(other) move location

17. DESCRIBE PROPOSED OR COMPLETED OPERATIONS (Clearly state all pertinent details, and give pertinent dates, including estimated date of starting any proposed work. If well is directionally drilled, give subsurface locations and measured and true vertical depths for all markers and zones pertinent to this work.)*

Moving location from 1980' FSL to 1830' FSL per archaeologist request.

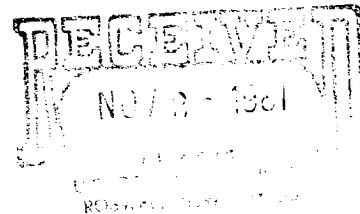
5. LEASE
NM 10588
6. IF INDIAN ALLOTTEE OR TRIBE NAME
7. UNIT AGREEMENT NAME
8. FARM OR LEASE NAME
George QJ Federal
9. WELL NO.
10. FIELD OR WILDCAT NAME
Undes. Abo
11. SEC., T., R., M., OR BLK. AND SURVEY OR AREA
25-6s-R25e
12. COUNTY OR PARISH
Chaves
13. STATE
NM
14. API NO.
15. ELEVATIONS (SHOW DF, KDB, AND WD)
3763'

(NOTE: Report results of multiple completion or zone change on Form 9-330.)

RECEIVED

DEC 8 1981

O. C. D.
ARTESIA, OFFICE



Subsurface Safety Valve: Manu. and Type

Set @ Ft.

18. I hereby certify that the foregoing is true and correct

SIGNED [Signature] TITLE Regulatory Coordinator

DATE 11-20-81

(This space for Federal or State office use)

APPROVED BY
CONDITIONS OF APPROVAL, IF ANY:

**NEW MEXICO OIL CONSERVATION COMMISSION
WELL LOCATION AND ACREAGE DEDICATION PLAT**

Form C-102
Supersedes C-128
Effective 1-1-65

All distances must be from the outer boundaries of the Section.

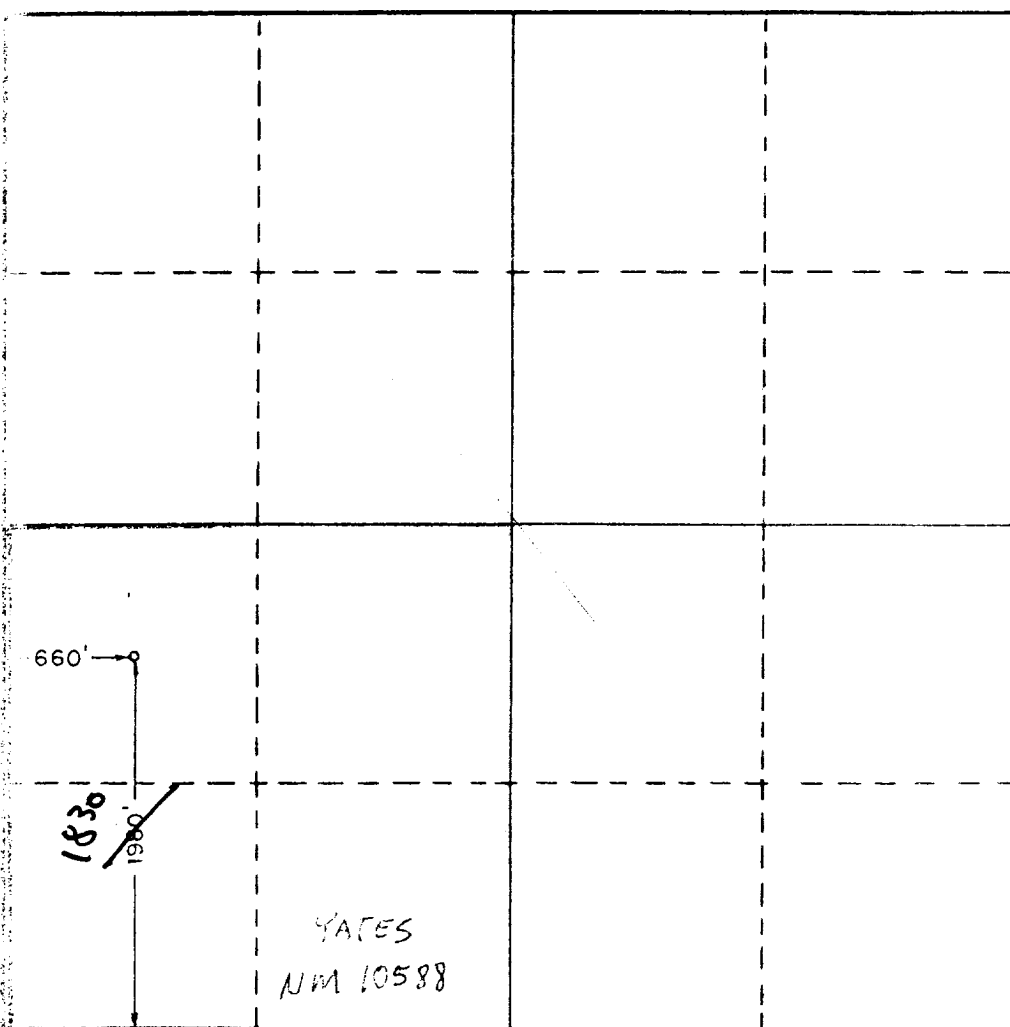
Operator YATES PETROLEUM CORPORATION			Lease George QJ Federal		Well No. 3
Tract Letter L	Section 25	Township 6 South	Range 25 East	County Chaves	
Actual Footage Location of Well: 1830 feet from the South line and 660 feet from the West line					
Ground Level Elev. 3765.8'	Producing Formation ABO		Pool UNDES ABO		Dedicated Acreage: 160 Acres

1. Outline the acreage dedicated to the subject well by colored pencil or hachure marks on the plat below.
2. If more than one lease is dedicated to the well, outline each and identify the ownership thereof (both as to working interest and royalty).
3. If more than one lease of different ownership is dedicated to the well, have the interests of all owners been consolidated by communitization, unitization, force-pooling, etc?

☐ Yes ☒ No If answer is "yes," type of consolidation _____

If answer is "no," list the owners and tract descriptions which have actually been consolidated. (Use reverse side of this form if necessary.) _____

No allowable will be assigned to the well until all interests have been consolidated (by communitization, unitization, forced-pooling, or otherwise) or until a non-standard unit, eliminating such interests, has been approved by the Commission.



CERTIFICATION

I hereby certify that the information contained herein is true and complete to the best of my knowledge and belief.

Name _____
 Position **Reg. MANAGER**
 Company **Yates Petroleum Corp**
 Date **10-29-81**

I hereby certify that the well location shown on this plat was plotted from field notes of actual surveys made by me or under my supervision, and that the same is true and correct to the best of my knowledge and belief.

Date Surveyed
October 29, 1981

Registered Professional Engineer
and/or Land Surveyor

Certificate No.
3640

330 660 990 1320 1650 1980 2310 2640 2970 3300 3630 3960 4290 4620 4950 5280 5610 5940 6270 6600

Yates Petroleum Corporation
George "OJ" Federal #3
1980' PSL & 660' FWL
Section 25-T6s-K25e

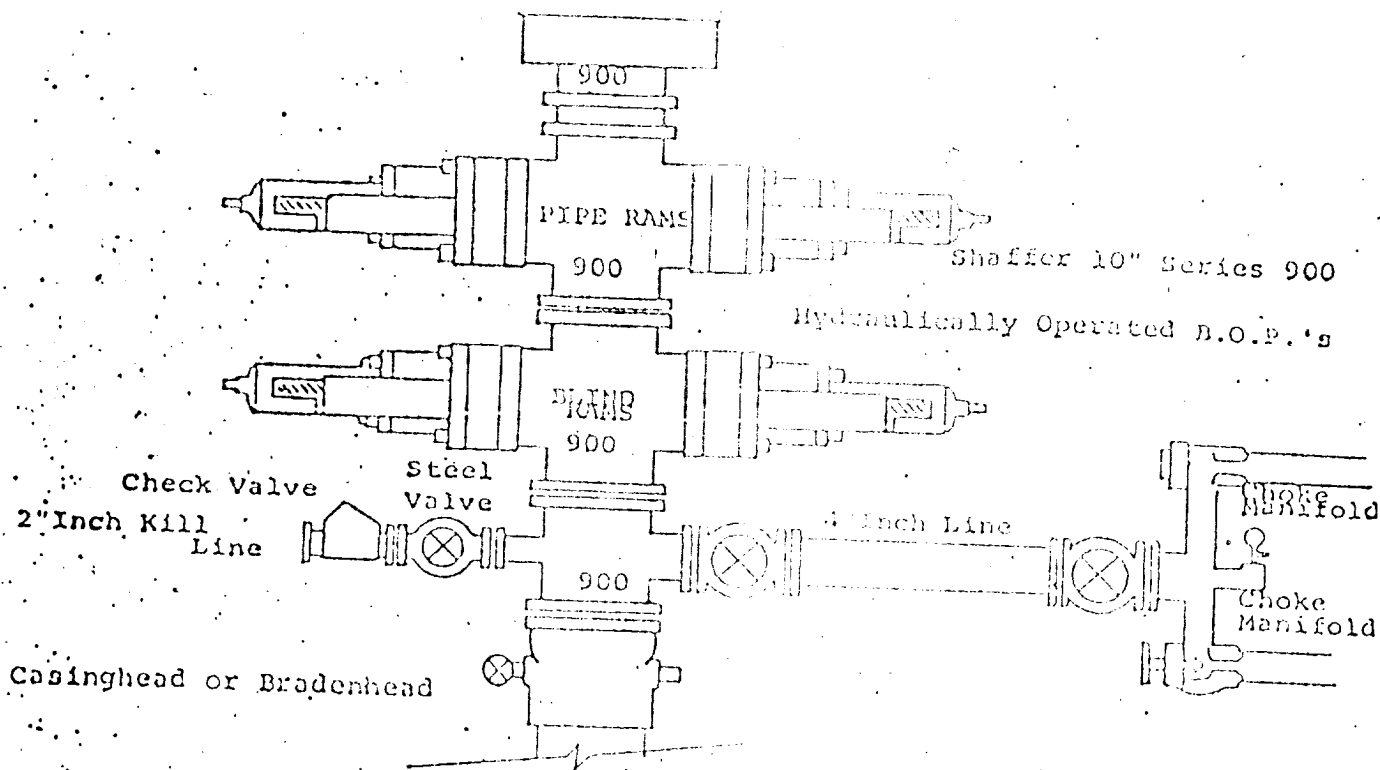
In conjunction with Form 9-331C, Application for Permit to Drill subject well, Yates Petroleum Corporation submits the following ten items of pertinent information in accordance with USGS requirements.

1. The geologic surface formation is sandy residuum.
2. The estimate tops of geologic markers are as follows:

San Andres	520'
Glorieta	1610'
Abo	3680'
Wolfcamp	4368
TD	4225'
3. The estimated depths at which anticipated water, oil or gas formations are expected to be encountered:

Water:	Approximately 250-300'
Oil or Gas:	3705' - 4345'
4. Proposed Casing Program: See Form 9-331C.
5. Pressure Control Equipment: See Form 9-331C and Exhibit B.
6. Mud Program: See Form 9-331C.
7. Auxiliary Equipment: Kelly Cock; pit level indicators and floor sensor equipment; sub with full-opening valve on floor, drill pipe connection.
8. Testing, Logging and Coring Program:

Samples:	Surface casing to TD
DST's:	As Warranted
Logging:	Intermediate casing to TD
Coring:	CNL-FDC T.D. to casing with GR-CNL on to surface and DLL from T.D. to casing.
9. No abnormal pressures to temperatures are anticipated.
10. Anticipated starting date: As soon as possible after approval.



THE FOLLOWING CONSTITUTE MINIMUM BLOWOUT PREVENTER REQUIREMENTS

1. All preventers to be hydraulically operated with secondary manual controls installed prior to drilling out from under casing.
2. Choke outlet to be a minimum of 4" diameter.
3. Kill line to be of all steel construction of 2" minimum diameter.
4. All connections from operating manifold to preventers to be all steel, hole or tube a minimum of one inch in diameter.
5. The available closing pressure shall be at least 15% in excess of that required with sufficient volume to operate the B.O.P.'s.
6. All connections to and from preventer to have a pressure rating equivalent to that of the B.O.P.'s.
7. Inside blowout preventer to be available on rig floor.
8. Operating controls located a safe distance from the rig floor.
9. Hole must be kept filled on trips below intermediate casing. Operator not responsible for blowouts resulting from not keeping hole full.
10. D. P. float must be installed and used below zone of first gas intrusion.