

NM OIL CONS. COMMISSION
Artesia NM 88210
UNITED STATES
DEPARTMENT OF THE INTERIOR
GEOLOGICAL SURVEYSUBMIT IN LICATE*
(Other instructions on
reverse side)Form approved.
Budget Bureau No. 42-R1425.

30-005-61265

APPLICATION FOR PERMIT TO DRILL, DEEPEN, OR PLUG BACK

1a. TYPE OF WORK

DRILL ☒DEEPEN ☐PLUG BACK ☐

b. TYPE OF WELL

OIL
WELL ☒GAS
WELL ☐OTHER ☐SINGLE
ZONE ☐MULTIPLE
ZONE ☐

2. NAME OF OPERATOR

STEVENS OPERATING CORPORATION

3. ADDRESS OF OPERATOR

P. C. Box 2203, Roswell, New Mexico 88201

4. LOCATION OF WELL (Report location clearly and in accordance with any State requirements)
At surface

660' FNL & 660' FWL of Sec. 11-7S-26E

At proposed prod. zone

14. DISTANCE IN MILES AND DIRECTION FROM NEAREST TOWN OR POST OFFICE*

27 air miles northeast of Roswell, New Mexico

15. DISTANCE FROM PROPOSED*

LOCATION TO NEAREST
PROPERTY OR LEASE LINE, FT.
(Also to nearest drig. unit line, if any)

660'

16. NO. OF ACRES IN LEASE

1520

18. DISTANCE FROM PROPOSED LOCATION*
TO NEAREST WELL, DRILLING, COMPLETED,
OR APPLIED FOR, ON THIS LEASE, FT.

N/A

19. PROPOSED DEPTH

6260

17. NO. OF ACRES ASSIGNED
TO THIS WELL

40

20. ROTARY OR CABLE TOOLS

Rotary

21. ELEVATIONS (Show whether DF, RT, GR, etc.)

3745 GL

23.

PROPOSED CASING AND CEMENTING PROGRAM

SIZE OF HOLE	SIZE OF CASING	WEIGHT PER FOOT	SETTING DEPTH	QUANTITY OF CEMENT
11"	8 5/8"	24.0#	900'	Sufficient to circulate
7 7/8"	4 1/2"	9.5#	6300'	Circulate liner

Well will be drilled to a depth of 6300 feet and all potential zones will be evaluated. If commercial production is indicated, well will be selectively perforated and stimulated.

Attached are: 1. Well Location and Acreage Dedication Plan
2. Supplemental Drilling Data
3. Surface Use Plan

Gas is not dedicated to a pipeline.

RECEIVED
DEC 03 1981OIL & GAS
U.S. GEOLOGICAL SURVEY
ROSWELL, NEW MEXICO

IN ABOVE SPACE DESCRIBE PROPOSED PROGRAM: If proposal is to deepen or plug back, give data on present productive zone and proposed new productive zone. If proposal is to drill or deepen directionally, give pertinent data on subsurface locations and measured and true vertical depths. Give blowout preventer program, if any.

24.

SIGNED

Pat Thompson

TITLE

Production Clerk

DATE

11-30-81

(This space for Federal or State office use)

PERMIT NO.

APPROVED

APPROVAL DATE

APPROVED BY

CONDITIONS OF APPROVAL, IF ANY:

DEC 9 1981

JAMES A. GILLHAM
DISTRICT SUPERVISOR

*See Instructions On Reverse Side

**N MEXICO OIL CONSERVATION COMMISSION
WELL LOCATION AND ACREAGE DEDICATION PLAT**

Form C-122
Supersedes C-128
Effective 1-1-65

All distances must be from the outer boundaries of the Section

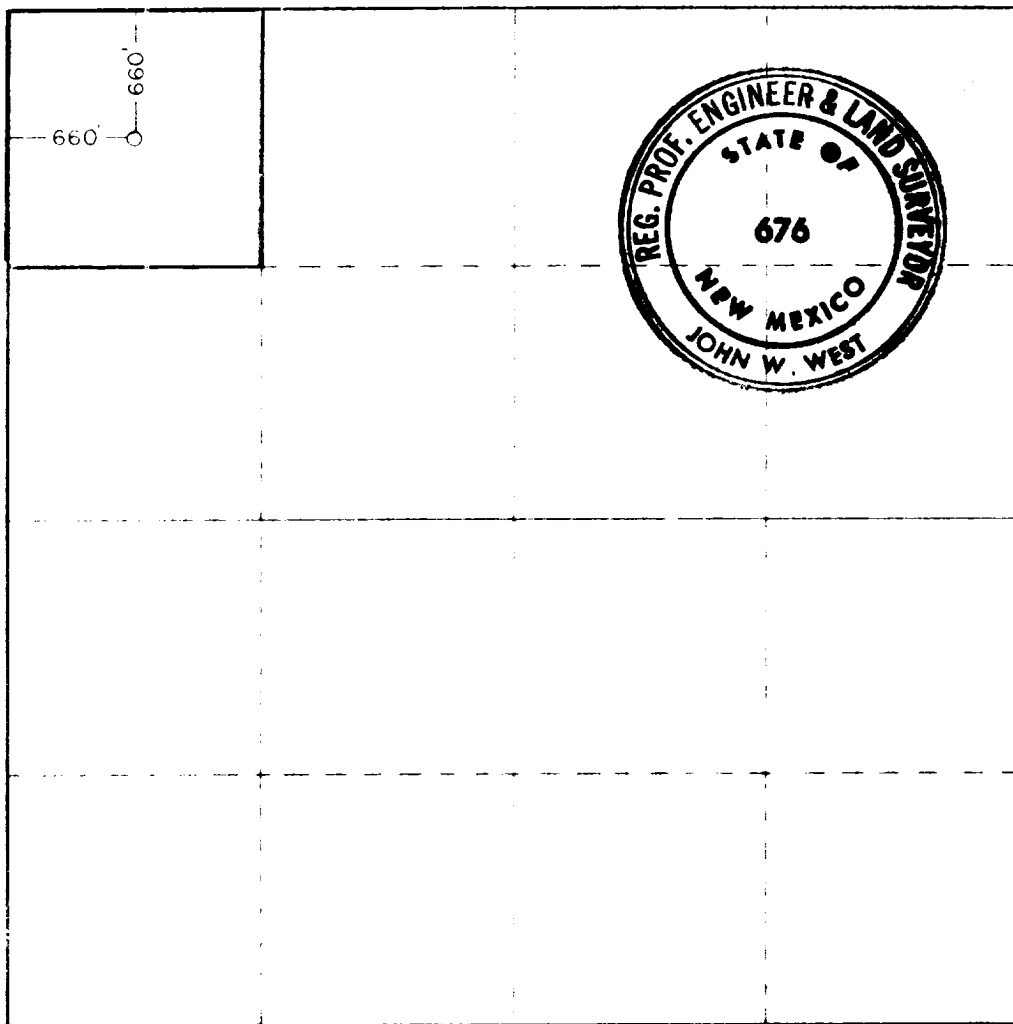
Operator Stevens Operating Co.			Lease "A" Hanagan Federal "A"		Well No. X 1
Section D	Section 11	Township 7 South	Range 26 East	County Chaves	
Location of Well: 660 feet from the North line and 660 feet from the West line					
Well Depth 3746.8'	Producing Formation Granite		Rock Wildcat	Estimated Acreage 40	

1. Outline the acreage dedicated to the subject well by colored pencil or hatchure marks on the plat below.
2. If more than one lease is dedicated to the well, outline each and identify the ownership thereof (both as to working interest and royalty).
3. If more than one lease of different ownership is dedicated to the well, have the interests of all owners been consolidated by communitization, unitization, force-pooling, etc?

Yes ☐ No ☐ If answer is "yes," type of consolidation _____

If answer is "no," list the owners and tract descriptions which have actually been consolidated. (Use reverse side of this form if necessary.) _____

No allowable will be assigned to the well until all interests have been consolidated (by communitization, unitization, forced-pooling, or otherwise) or until a non-standard unit, eliminating such interests, has been approved by the Commission.



CERTIFICATION

I hereby certify that the information contained herein is true and complete to the best of my knowledge and belief.

Pat Thompson
Signature

Pat Thompson
Production Clerk

Stevens Operating Co.

11-30-81

I hereby certify that the well location shown on this plat was plotted from field notes of actual surveys made by me or under my supervision, and that the same is true and correct to the best of my knowledge and belief.

Date Surveyed

Nov. 25, 1981

Registered Professional Engineer and Land Surveyor

John W. West
Signature

Certificate No **JOHN W. WEST 676**
PATRICK A. ROMERO 6863
Ronald J. Eidson 3239

330 660 990 1320 1650 1980 2310 2640 2970 3300 3630 3960 4290 4620 4950 5280 5610 5940 6270 6600

SUPPLEMENTAL DRILLING DATA

STEVENS OPERATING CORP.
WELL #1 HANAGAN FEDERAL "A"
660' FNL & 660' FWL, SEC. 11-T7S-R25E

1. SURFACE FORMATION: Permian (Artesia Group).

2. ESTIMATED TOPS OF GEOLOGIC MARKERS:

Queen	385'	Wolfcamp	4815'
San Andres	835'	Pennsylvanian	5335'
Glorietta	2015'	Granite Wash	6255'
Abo	4135'		

3. ANITCIPATED POROSITY ZONES:

Water	150 - 200'
Oil	1300 - 1450'
Gas	4300 - 4500'
Gas	5400 - 5550'

4. CASING DESIGN:

<u>Size</u>	<u>Interval</u>	<u>Weight</u>	<u>Grade</u>	<u>Joint</u>	<u>Condition</u>
11"	0 - 900'	24.0#	H-40	STC	New
7 7/8"	0 - 6300'	9.5#	K-55	STC	New

5. SURFACE CONTROL EQUIPMENT: A double ram-type preventer (900 series). A sketch of BOP stack is attached.

6. CIRCULATING MEDIUM:

0 - 900	Fresh water with gel added if needed for viscosity.
900 - TD	Salt water conditioned as necessary for control of viscosity and water loss.

7. AUXILIARY EQUIPEMENT: Drill string safety valve.

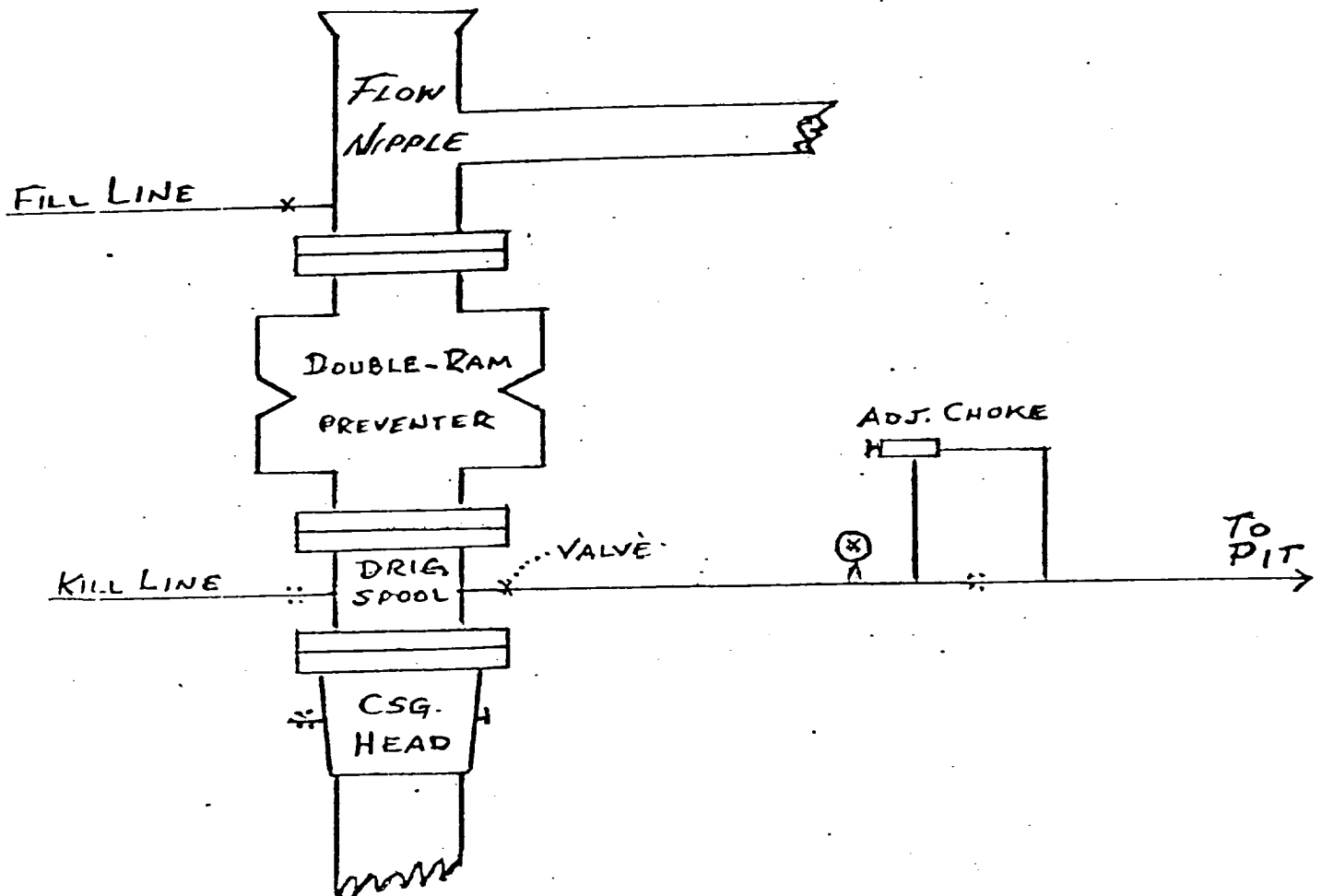
8. TESTING, LOGGINS AND CORING PROGRAMS: No coring or DST's are planned. Compensated Neutron-Formation Density s/Gamma Ray Log, 0-TD; Dual Laterolog, shoe to TD.

9. ABNORMAL PRESSURES, TEMPERATURES OR GASES: None anticipated.

10. ANTICIPATED DATES: It is planned that operations will commence about December 14, 1981. Duration of drilling and completion operations should be 40 to 60 days.

B O P & CHOKE MANIFOLD

SERIES 900



SDD EXHIBIT "A"

STEVENS OPERATING CORP.
WELL #1 HANAGAN FEDERAL "A"
660' FNL & 660 FWL, SEC. 11-T7S-R26E

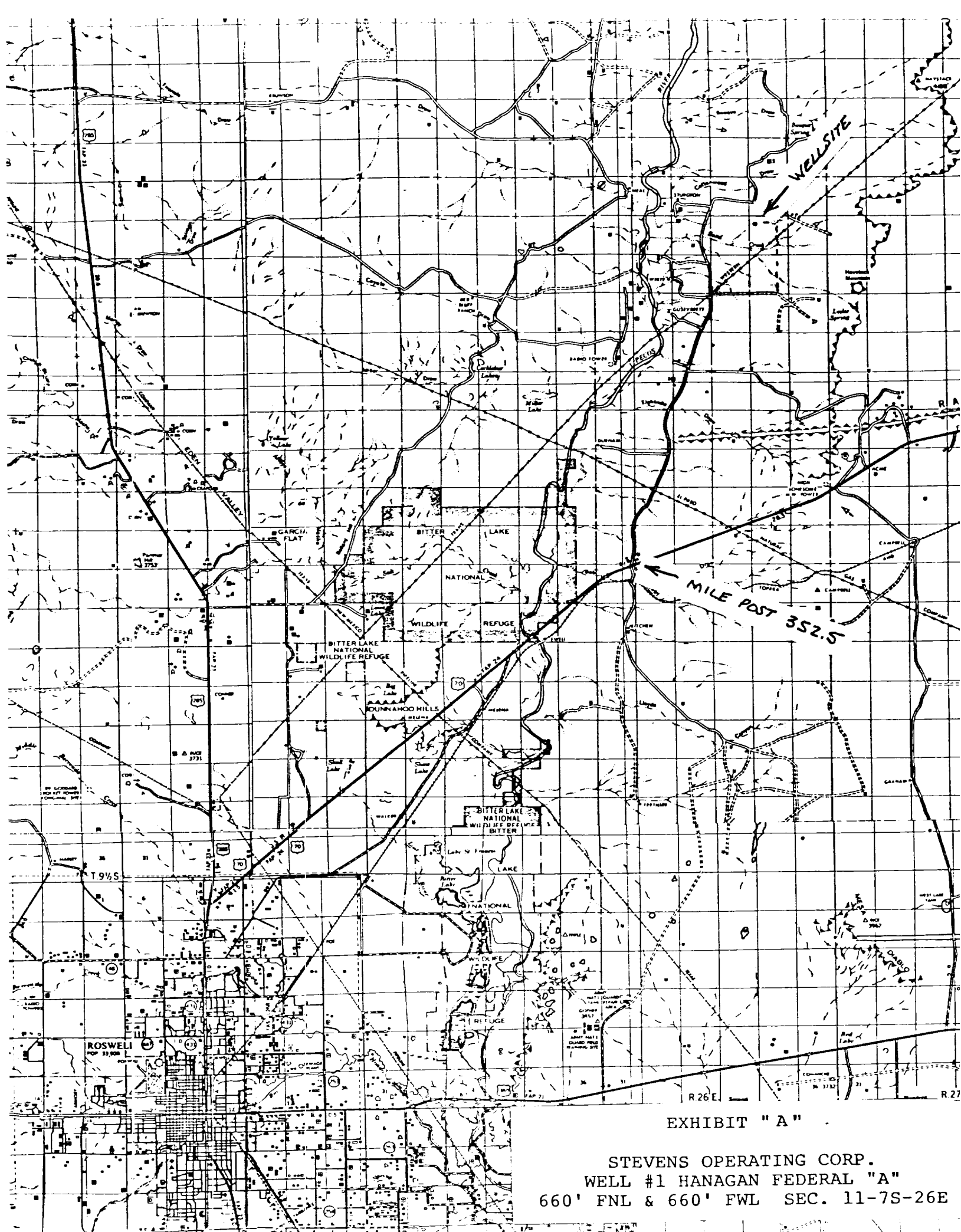


EXHIBIT "A"

STEVENS OPERATING CORP.
WELL #1 HANAGAN FEDERAL "A"
660' FNL & 660' FWL SEC. 11-7S-26E

